

MONET

Single Pole (One location) or
3-Way (Multi-location)
plus Scene Capabilities

120VAC, 60Hz

Cat. No. MNX10-1L, 1000VA (Lighted)

Cat. No. MNX15-1L, 1500VA (Lighted)

Total minimum load must exceed 60VA

For use w/ Advance Mark X™ or
Philips Ecotron™ Dimming Ballasts
Fluorescent Only

For use w/ Cat. No. MN00R-1 Monet™ Remote

INSTALLATION INSTRUCTIONS



PK-92959-10-00-0C

LIMITED 2 YEAR WARRANTY AND EXCLUSIONS

Leviton warrants to the original consumer purchaser and not for the benefit of anyone else that this product at the time of its sale by Leviton is free of defects in materials and workmanship under normal and proper use for two years from the purchase date. Leviton's only obligation is to correct such defects by repair or replacement, at its option, if within such two year period the product is returned prepaid, with proof of purchase date, and a description of the problem to **Leviton Manufacturing Co., Inc., Attn: Quality Assurance Department, 59-25 Little Neck Parkway, Little Neck, New York 11362-2591 (In Canada send to Leviton Mfg. of Canada Ltd., 165 Hymus Blvd., Point Claire, (Quebec), Canada H9R 1E9).** This warranty excludes and there is disclaimed liability for labor for removal of this product or reinstallation. This warranty is void if this product is installed improperly or in an improper environment, overloaded, misused, opened, abused, or altered in any manner, or is not used under normal operating conditions or not in accordance with any labels or instructions. There are no other or implied warranties of any kind, including merchantability and fitness for a particular purpose, but if any implied warranty is required by the applicable jurisdiction, the duration of any such implied warranty, including merchantability and fitness for a particular purpose, is limited to two years. Leviton is not liable for incidental, indirect, special, or consequential damages, including without limitation, damage to, or loss of use of, any equipment, lost sales or profits or delay or failure to perform this warranty obligation. The remedies provided herein are the exclusive remedies under this warranty, whether based on contract, tort or otherwise.

For Technical Assistance Call:
1-800-824-3005 (U.S.A. Only)
1 800 405-5320 (Canada Only)
www.leviton.com



PK-92959-10-00-0C

FEATURES

- Leviton's Decora® style design
- ON/OFF LED indicates status of load
- Gangable with any Leviton Decora® style strap-mounted devices
- Square Law Dimming
- Scene Capabilities
- Hidden air-gap switch

INTRODUCTION

The Monet™ Dimmer is the premier model in Leviton's line of Architectural Specification Multi-Location Dimmers. The Monet™ is ideal for any application where a subtle design plays a critical role, such as in museums, galleries, and elegant dining rooms. The low-profile architectural fin design provides Monet™ with a flush-to-wall fit. The slider and cover plate feature smooth angles that won't create distracting shadows, with a matte finish to ensure minimum light reflection. Monet™ also features a soft green locator light that illuminates when the dimmer is OFF.

Monet's™ digital circuitry provides single-pole dimming and multi-location three-way switching plus scene lighting control capability for up to 6 programmable lighting scenes. Monet™ also provides gentle Fade-to-ON, Fade-to-OFF switching for eye-pleasing comfort and extended bulb life.

FCC COMPLIANCE STATEMENT

This device complies with part 15 of the FCC Rules. Operation is subject to the following two conditions: (1) This device may not cause harmful interference, and (2) this device must accept any interference received, including interference that may cause undesired operation.

INSTALLATION INSTRUCTIONS

WARNING: TO BE INSTALLED AND/OR USED IN ACCORDANCE WITH APPROPRIATE ELECTRICAL CODES AND REGULATIONS.

WARNING: IF YOU ARE NOT SURE ABOUT ANY PART OF THESE INSTRUCTIONS, CONSULT A QUALIFIED ELECTRICIAN.

WARNING: TO REDUCE THE RISK OF OVERHEATING AND POSSIBLE DAMAGE TO THIS DEVICE AND OTHER EQUIPMENT, USE ONLY WITH THE APPROPRIATE ADVANCE MARK X™ 120V ELECTRONIC OR PHILIPS ECOTRON™ 120V DIMMING BALLASTS FOR CONTROLLING THE SPECIFIC FLUORESCENT LAMPS.

OTHER CAUTIONS:

1. FOR 3-WAY APPLICATIONS, USE ONLY ONE (1) DIMMER PER LOAD. FOR REMOTE OPERATION, USE CAT. NO. MN00R-1. DO NOT USE A 3-WAY SWITCH.
2. WHEN USING A 1500VA DIMMER IN A SINGLE GANG PLASTIC BOX ONLY, DERATE DIMMER TO 1400VA.
3. BOTH LIGHTING FIXTURE AND DIMMER MUST BE **GROUND**ED.
4. DISCONNECT POWER WHEN SERVICING FIXTURE OR CHANGING LAMPS.
5. USE THIS DEVICE ONLY WITH COPPER OR COPPER CLAD WIRE. WITH ALUMINUM WIRE USE ONLY DEVICES MARKED CO/ALR OR CU/AL.

MULTI-GANG INSTALLATION:

CAUTION: DO NOT GANG DIMMERS VERTICALLY (ONE DIRECTLY ABOVE ANOTHER).

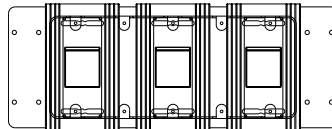
- It is recommended to install the dimmers without breaking off fins whenever possible so that no derating is necessary, even when ganging. If the installation requires breaking off fins for space requirements, derating is required.
- When ganging a combination of narrow and wide dimmers, all narrow dimmers are required to be at one end of the gang, and all wide dimmers are required to be at the other end of the gang if ordering custom wallplates.
- Adapter plates (Cat. No. MN0LA or MN0SA) are available for multi-gang installations using any Leviton Decora® style strap-mounted device.

No Fins Broken Off:

Refer to **Table 1** for the size and number of outlet boxes required for multi-gang installations.

A multi-gang masonry box or a multi-gang switch box with a raised cover are *recommended* for easy installation although standard outlet boxes will work. **No derating is necessary.**

EXAMPLE: 3 Narrow Dimmers / No Wide Dimmers – 5 Gang Outlet Box (note mounting holes)



Fins Broken Off:

Refer to **Table 2** for the size and number of outlet boxes required for multi-gang installations when all inside fins are removed.

NOTE: The fins on the dimmers have special break off points that allow removal of partial fin sections for ganging. Use pliers to carefully bend fin side sections back and forth until they break off (see **Figure 2**). These sections should only be removed at the break off points to permit proper ventilation. Do not remove side sections on extreme ends of the gang.

EXAMPLE: 3 Narrow Dimmers / No Wide Dimmers – 3 Gang Outlet Box (note inside fins removed)

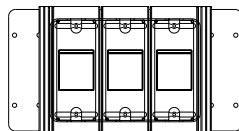


TABLE 1 – OUTLET BOX REQUIREMENTS

Wide Dimmers (1500VA)	Narrow Dimmers (600VA/1000VA)						
	0	1	2	3	4	5	6
0	0	1	3	5	6	9	10
1	1	4	5	7	8	10	
2	4	6	8	9			
3	7	9	10				
4	9						

TABLE 2 – OUTLET BOX REQUIREMENTS

Wide Dimmers (1500VA)	Narrow Dimmers (600VA/1000VA)									
	0	1	2	3	4	5	6	7	8	9
0	0	1	2	3	4	5	6	7	8	9
1	1	3	4	5	6	7	8	9	10	
2	3	5	6	7	8	9	10			
3	5	7	8	9	10					
4	7	9	10							
5	9									

TABLE 3 – MAXIMUM LOAD PER DIMMER

Cat. No.	Single	Two Gang	More than 2 Gang
MNX10-1	1000VA	800VA	700VA
MNX15-1	1500VA	1250VA	1000VA

Figure 1 – Dimmer Functions

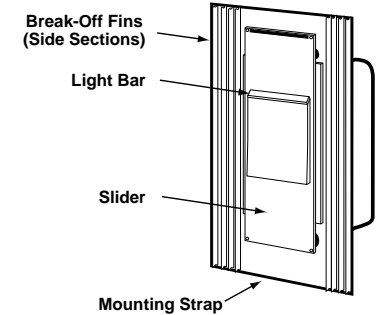


Figure 2 – Break-Off Fin Removal

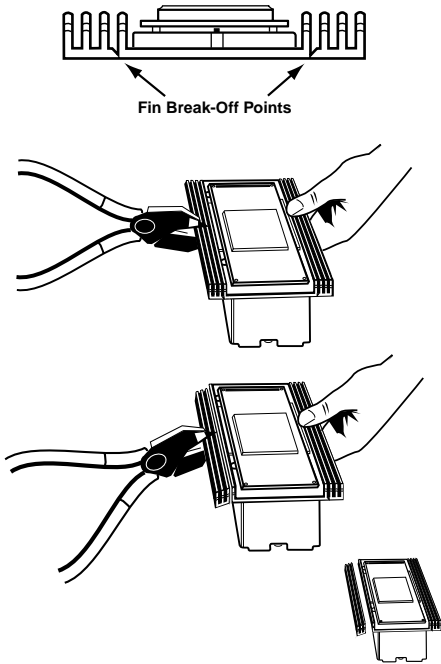
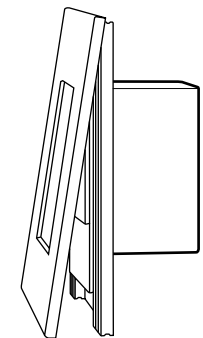


Figure 3 – Wallplate Installation / Removal



The side sections dissipate heat, so removing them requires a derating of the dimmer's capacity (see Table 3).

MAXIMUM BULB WATTAGE:

Advance Mark X™ or Philips Ecotron™ dimmers are rated in Volt-Amps (VA). The maximum bulb wattage is determined by the efficiency of the Advance Mark X™ or Philips Ecotron™ ballast. Tables 4 & 5 show the maximum number of ballasts that can be connected to a single dimmer for different Advance Mark X™ or Philips Ecotron™ ballasts. Also note the table shows maximum ballasts for multi-gang installations.

NOTE: For multiple ballasts on one dimmer, use only the same model ballast.

TABLE 4

Cat. No. MNX10-1L, 120V – For use with Advance Mark X™ 120V and Philips Ecotron™ 120V Dimming Ballasts

Advance Mark X™ Part No.	Philips Ecotron™ Part No.	Lamps	Max. # Ballasts/Dimmer for Multi-gang		
			Single Gang	Two Gang	More than 2 Gang
REZ-1T32	ECD-120-1T32T	CFM26W/GX24Q	32	26	22
REZ-1T32	ECD-120-1T32T	CFM32W/GX24Q	26	21	18
REZ-1T42	ECD-120-1T42T	CFM42W/GX24Q	20	16	14
REZ-2Q26	ECD-120-2/26T	CFQ26W/G24Q	17	14	12
REZ-132	ECD-120-1/32T	F25T8	32	26	22
REZ-2S32	ECD-120-2/32T	F25T8	17	13	12
REZ-3S32	ECD-120-3/32T	F25T8	11	9	8
REZ-132	ECD-120-1/32T	F32T8	28	22	19
REZ-2S32	ECD-120-2/32T	F32T8	14	11	10
REZ-3S32	ECD-120-3/32T	F32T8	9	8	7
REZ-1TTS40	ECD-120-1L40T	FT40W/2G11	25	20	17
REZ-2TTS40	ECD-120-2L40T	FT40W/2G11	12	10	9

TABLE 5

Cat. No. MNX15-1L, 120V – For use with Advance Mark X™ 120V and Philips Ecotron™ 120V Dimming Ballasts

Advance Mark X™ Part No.	Philips Ecotron™ Part No.	Lamps	Max. # Ballasts/Dimmer for Multi-gang		
			Single Gang	Two Gang	More than 2 Gang
REZ-1T32	ECD-120-1T32T	CFM26W/GX24Q	48	40	32
REZ-1T32	ECD-120-1T32T	CFM32W/GX24Q	39	33	26
REZ-1T42	ECD-120-1T42T	CFM42W/GX24Q	30	25	20
REZ-2Q26	ECD-120-2/26T	CFQ26W/G24Q	26	22	17
REZ-132	ECD-120-1/32T	F25T8	48	40	32
REZ-2S32	ECD-120-2/32T	F25T8	25	21	17
REZ-3S32	ECD-120-3/32T	F25T8	17	14	11
REZ-132	ECD-120-1/32T	F32T8	42	35	28
REZ-2S32	ECD-120-2/32T	F32T8	21	17	14
REZ-3S32	ECD-120-3/32T	F32T8	14	12	9
REZ-1TTS40	ECD-120-1L40T	FT40W/2G11	37	31	25
REZ-2TTS40	ECD-120-2L40T	FT40W/2G11	18	15	12

TO INSTALL:

- WARNING:** TO AVOID FIRE, SHOCK, OR DEATH; TURN OFF POWER AT CIRCUIT BREAKER OR FUSE AND TEST THAT POWER IS OFF BEFORE WIRING!
- Remove existing wallplate and switch or dimmer, if applicable.
- 2A. Remove Monet™ wallplate from Monet™ dimmer by gently pulling at top or bottom edges until it snaps off (see Figure 3).
3. Remove 3/4" (1.9 cm) of insulation from each circuit conductor. Make sure the ends of wires are straight.
4. Connect lead wires per appropriate WIRING DIAGRAM as follows: Twist strands of each lead tightly and, with circuit conductors, push firmly into appropriate wire connector. Screw connectors on clockwise making sure that no bare conductor shows below the wire connectors. Secure each connector with electrical tape.

NOTE: For single pole applications, cap one YELLOW lead with an appropriate size wire connector. Secure connector with electrical tape.
5. Carefully position all wires to provide room in outlet box for dimmer. Mount dimmer into box with mounting screws supplied with the light bar facing up (see Figure 1).

NOTE: Ensure that dimmer is mounted vertically for proper heat dissipation.
6. Snap Monet™ Decora® wallplate on over heatsink (see Figure 3).

NOTE: Custom wallplates available for multi-gang installations.
7. Restore power at circuit breaker or fuse. **INSTALLATION IS COMPLETE.**

NOTE: When servicing a controlled fixture, position the slider to its lowest position, push slider in and down until a click is heard to activate the air-gap switch. A RED horizontal line will appear at the top of the Decora® opening to confirm that the air-gap switch is actuated and power to the fixture is cut-off. After service is completed, push slider in and up to restore power for normal operation.

TO PROGRAM

Programming scenes occurs at the scene controller for this dimmer. If programming is required, refer to scene controller's instruction sheets.

TO OPERATE

ON/OFF: Depress the slider. Each time the slider is depressed, the state of the lights will toggle between ON and OFF. When the lights turn ON, the lights will Fade-to-ON to the level of its previous state, and the GREEN light bar will turn OFF. When the lights turn OFF, the GREEN light bar will flash indicating that the slider has been depressed and the lights will Fade-to-OFF. When lights are completely OFF, the GREEN light bar will then turn ON to facilitate access to the dimmer in the dark.

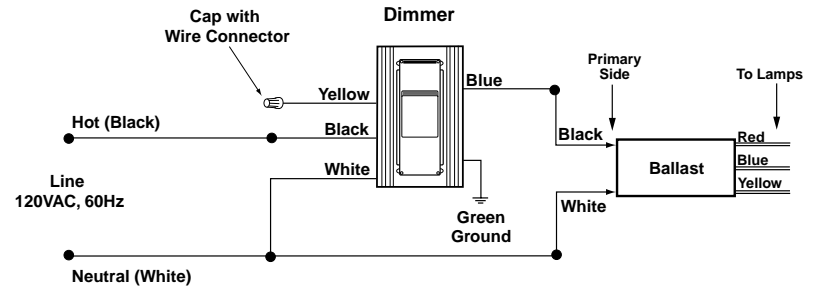
DIM/BRIGHT: Move the slider up or down. The lights will brighten or dim respectively, to the level set.

Power Interruption: If a Power Interruption occurs while the lights are ON, when power is restored, the lights will brighten to the level that is set on the slider. If a Power Interruption occurs while the lights are OFF, when power is restored, the lights will stay OFF.

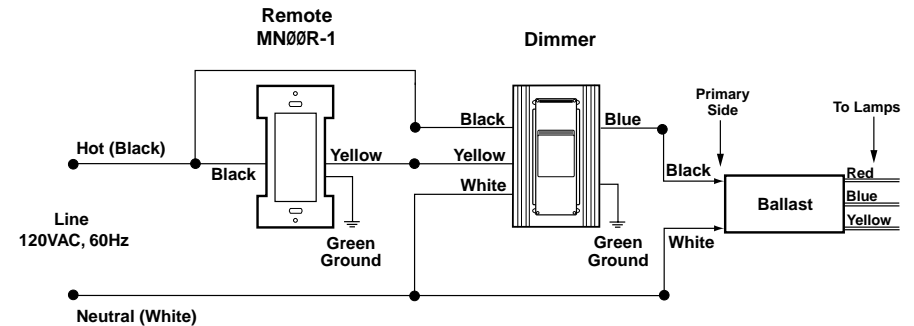
TROUBLESHOOTING

- Light does not turn ON and ON/OFF LED does not turn ON
 - Circuit breaker or fuse has tripped.
 - Lamp is burned out.
 - Ballast is not connected to line Neutral.
 - Incorrect ballast used.
 - Air-gap switch is open.
 - Lamp switch, if any, is OFF.
- Dimmer does not operate
 - Dimmer BLACK wire miswired to lamp and dimmer BLUE wire miswired to LINE Hot.
- Lights flickering
 - Lamp has a bad connection.
 - Wires not secured firmly with wire connectors.

Wiring Diagram 1 – Single Location Control Application



Wiring Diagram 2 – Two Location Control Application



Wiring Diagram 3 – Three Location Control Application

