

Functions

Lamp Installation

Disconnect the unit from power. Loosen the thumbscrews on the light stick assembly and move the lampholder brackets away from the silver reflectors. Install the lamp by centering one end within a contact, apply force to that contact compressing the lampholder spring. The opposite lamp end can be centered within its lampholder. Release the lamp, and it should be held firmly in place. Pivot the lamp assemblies into the small reflectors, and tighten the thumbscrews firmly.

Please do not touch the quartz envelope during installation. Double ended lamps should be installed with protective gloves or insulation around the lamp, like a tissue on the lamp perimeter which can be removed after lamp is installed. If you touch the envelope, REMOVE the lamp from the fixture and clean with isopropyl (rubbing) alcohol and a clean, lint free cloth.

The Mini Softlite is UL listed to 2000 watts, using 2-1000 watt lamps maximum. Higher wattage lamps used in the Mini Softlite void manufacturing warranties.

Warnings

1. The Mini Softlite is a professional lighting fixture. The fixture housing becomes hot and should not be touched during operations.
2. The fixture uses high intensity tungsten halogen lamps which can implode. The primary cause of lamp implosions is fingerprints or other foreign debris on the lamp. Proper fixture care will minimize risk.
3. Do not operate continuously for more than 8 hours with 1000-watt lamps. Fixture may overheat.

Maintenance

Reflector

Both the main white reflector and the silver auxiliary are cleaned with isopropyl (rubbing) alcohol and a clean, lint free cloth. Strong alkaline or acidic cleaners **MUST NOT** be used.

General Maintenance

Periodically check that all screws and wire terminations are secured firmly. Also check that the strain relief is fitted properly inside the wiring compartment, and the cable is not frayed.

If lampholder becomes pitted or loses spring tension, it must be replaced. To replace, remove the appropriate lampholder bracket from the light stick assembly by loosening both thumbscrews. Drill out the rivet, replace the lampholder and reapply rivets or 4-40 screws with lock nuts.

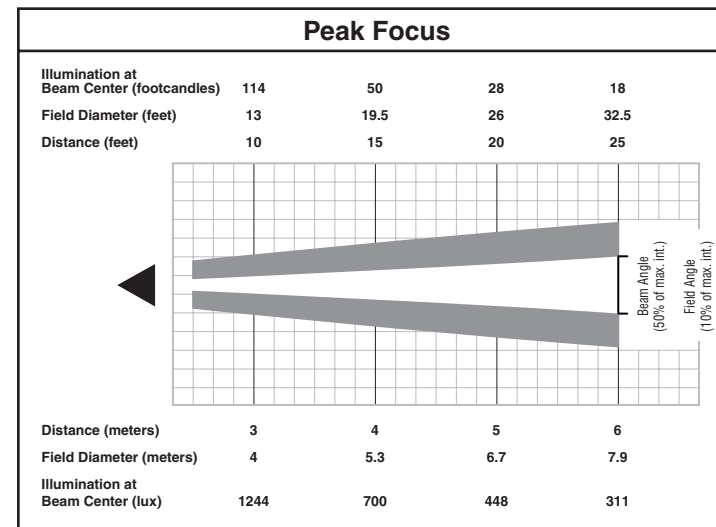
Color

Lee Color Effect Filters are recommended for all filter applications. These filters are available in over 175 colors, color corrections, and diffusion selections. Lee Filters are available in both 21" x 4" sheets and 25' x 4' rolls.

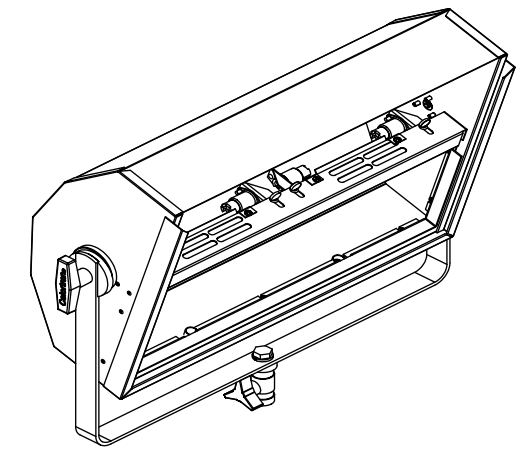
Recommended Lamps				
Watts	Part No.	ANSI	Color Temp.	Life (Hrs.)
1000	176-021	FCM	3200°K	500
800	◇ 176-027	EME	3200°K	250
750	176-026	EMD	3200°K	500
500	176-024	FDN	3050°K	500
500	176-019	EJD	3200°K	10000
1000	◇ 7786R/64583		3200°K	200
800	◇ 13477R/P2-11		3200°K	150
625	◇ P2-15		3200°K	75
500	◇ 64702/7785R/K-1		2900°K	2000
300	◇ 12113R/K-9		2900°K	2000

◇ (220 or 240 Volt lamps)

Accessories	
Part No.	Description
	Difusion/Color frame
	Compact Stand
000-A00SC-000	Safety cable, 30" long
000-A00CC-000	C-clamp
000-AMSEC-000	Egg Crate



Photometric Performance		
With 2-1000 Watt, FCM lamp, Model No. 176-021		
For illumination at any distance, divide 11,200 by the distance squared.		
For field diameter at any distance, multiply that distance by 1.3 for beam and 2.9 for field.		
Efficiency	Flood Lumens	Candlepower
Beam	9,693 (17.3%)	11,200
Field	22,274 (39.8%)	



Mini Softlite

USER GUIDE

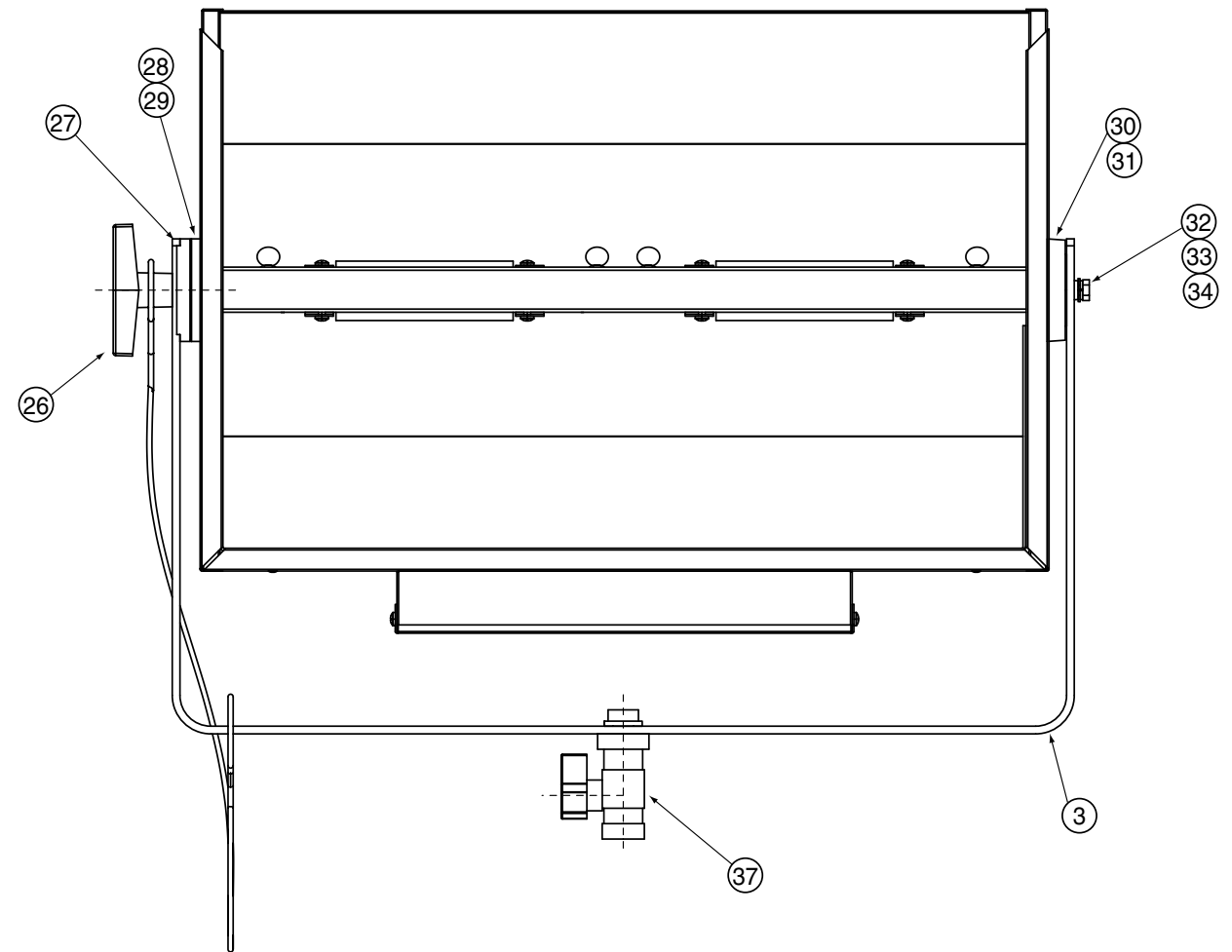
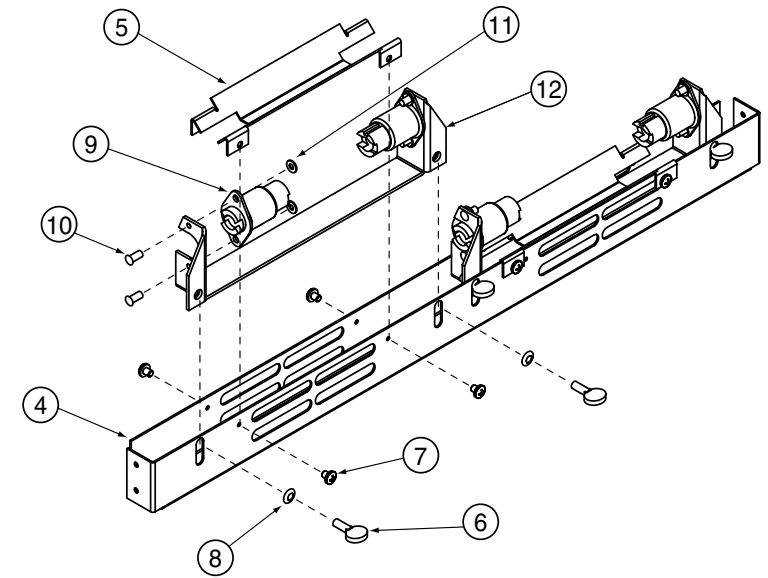
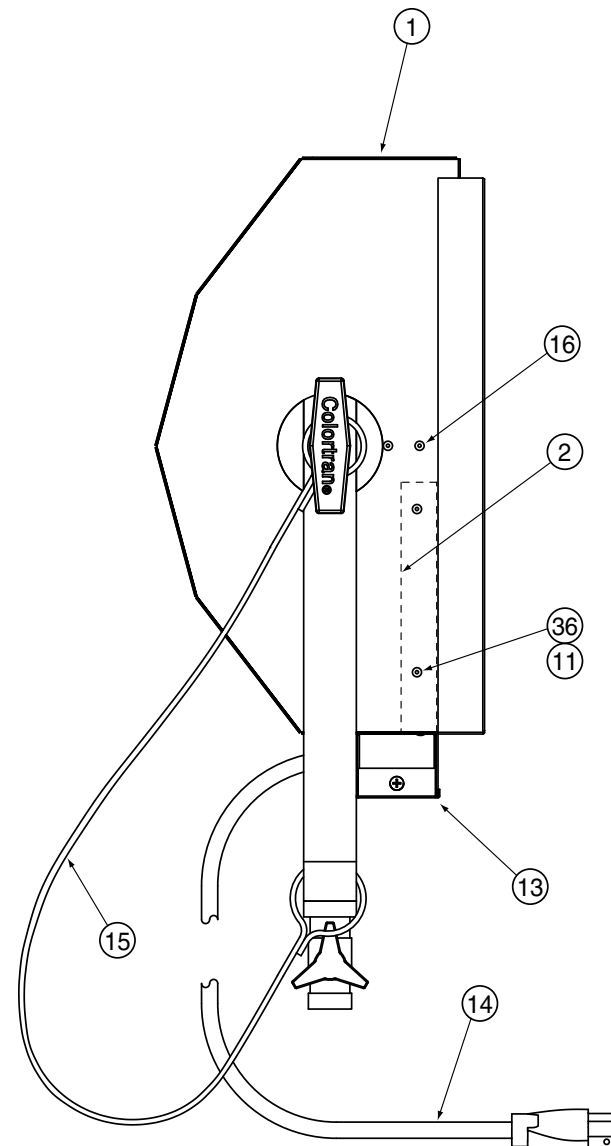
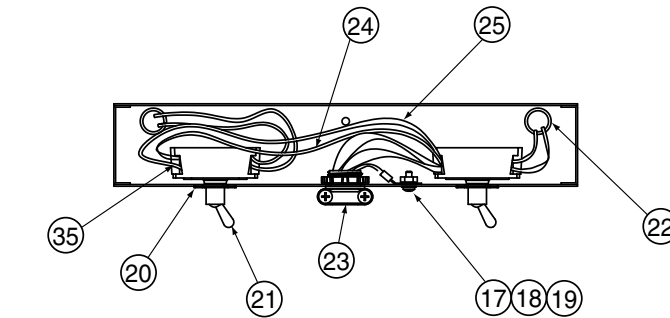
Engineered for Safe and Easy Operation.

Leviton Mini Softlite is a versatile, portable soft fill light for photographic and studio applications. These instructions will help you become more familiar with your fixture.



REPLACEMENT ITEMS

Ref.	Qty.	Description	Item Number
1	1	Housing weldment	
2	1	Wire cover	
3	1	Yoke	
4	1	Bar, light stick	
5	2	Reflector	
6	4	Knurled screw, 10-24 x 1/2"	
7	10	Screw, #6 x 1/4", AB point	
8	4	Bellville washer	
9	4	Lampholder	
10	8	Pop rivet, 1/8" x 5/16"	
11	15	Flat washer	
12	2	Bracket	
13	1	Wire cover	
14	1	Cord set	
15	1	Sling cord	
16	4	Pop rivet, 1/8" x 1/8"	
17	1	Screw, pan head, 8-32 x 3/8"	
18	2	Washer, internal tooth, #8	
19	1	"K" lock nut, 8-32	
20	2	Switch On/Off plate	
21	2	Switch	
22	2	Snap bushing	
23	1	Strain relief	
24	1	White wire, 14 AWG	
25	1	Black wire, 14 AWG	
26	1	T-Bolt	N00-HD062-000
27	1	Thrust disk	
28	1	Pressure disk	N00-SM237-550
29	3	Pop rivet, 3/16" x 7/16"	
30	1	Standoff disk	N00-HD237-690
31	3	Pop rivet, 3/16" x 7/16"	
32	1	Flat washer, #1/4	
33	1	Split lock washer, #1/4	
34	1	Bolt, hex head, 1/4-20 x 1"	
35	8	Spade terminal	
36	7	Pop rivet, 1/8" x 5/16"	
37	1	Combo stud	000-A00CS-000



LIMITED TWO YEAR WARRANTY AND EXCLUSIONS

Leviton warrants to the original consumer purchaser and not for the benefit of anyone else that this product at the time of its sale by Leviton is free of defects in materials and workmanship under normal and proper use for two years from the purchase date. Leviton's only obligation is to correct such defects by repair or replacement, at its option, if within such two year period the product is returned prepaid, with proof of purchase date, and a description of the problem to **Leviton Manufacturing Co., Inc., Att: Service Department, 20497 SW Teton Ave., Tualatin, Oregon 97062**. All products returned to Leviton-NSI must have factory authorization for return prior to shipping. The purchaser is responsible for completing and mailing to Leviton, within 15 days of purchase, the warranty registration card enclosed with each product. This warranty excludes and there is disclaimed liability for labor for removal of this product or reinstallation. This warranty is void if this product is installed improperly or in an improper environment, overloaded, misused, opened, abused, or altered in any manner, or is not used under normal operating conditions or not in accordance with any labels or instructions. There are no other or implied warranties of any kind, including merchantability and fitness for a particular purpose, but if any implied warranty is required by the applicable jurisdiction, the duration of any such implied warranty, including merchantability and fitness for a particular purpose, is limited to two years. Leviton is not liable for incidental, indirect, special, or consequential damages, including without limitation, damage to, or loss of use of, any equipment, lost sales or profits or delay or failure to perform this warranty obligation. The remedies provided herein are the exclusive remedies under this warranty, whether based on contract, tort or otherwise.

Leviton NSI Division Headquarters
20497 SW Teton Avenue, Tualatin, OR 97062

Customer Service Telephone: 800.736.6682
Customer Service Fax: 503.404.5594
Technical Services: 800.959.6004

Leviton Manufacturing Company, Incorporated.
59-25 Little Neck Parkway, Little Neck, NY 11362-2591.

Visit Leviton's websites at <http://www.nsicorp.com>
& <http://www.leviton.com>

Copyright © 2003. Leviton Manufacturing Company, Inc. All Rights Reserved
Specifications and pricing subject to change at any time.