

INSTALLATION INSTRUCTIONS

ENGLISH

WARNINGS AND CAUTIONS:

- **TO AVOID FIRE, SHOCK, OR DEATH; TURN OFF POWER AT CIRCUIT BREAKER OR FUSE AND TEST THAT THE POWER IS OFF BEFORE WIRING OR SERVICING!**
- Zipline Retrofit Kit installation requires knowledge of fluorescent lighting and luminaire electrical systems. If you are not sure about any part of these instructions, consult an electrician.
- When lamping, both sets of lamp pins must be fully engaged in the lampholder modules and rotated 90° into the detent (click) position before powering ON.
- Luminaire wiring, ballast, or other electrical parts may be damaged when drilling for Zipline Retrofit Kit hardware. Check for enclosed wiring and components.
- Install this kit only in the luminaire that has the construction features and dimensions shown in these instructions.
- Lampholder modules **MUST BE** installed per these instructions.
- Only those open holes indicated in the drawings may be made or altered as a result of kit installation. **DO NOT** leave any other open holes in an enclosure of wiring or electrical components.
- To prevent wiring damage or abrasion, **DO NOT** expose wiring to edges of sheet metal or other sharp objects.
- Special handling of ballast may be required. Dispose of old ballast per local codes and regulations.
- Suitable for damp locations.

FEATURES

- Instant ON, no flicker or buzz.
- Limited 5 year warranty.
- Fits into most existing linear luminaires.
- Leviton strongly recommends installing a trial fixture prior to ordering full project quantities.

ENVIRONMENTAL REQUIREMENTS

- Lamp environmental temperature range -22°F (-30° C) and 113°F (45°C).
- For service please call: 323-599-5001.

INSTALLATION

TO AVOID FIRE, SHOCK, OR DEATH; TURN OFF POWER AT CIRCUIT BREAKER OR FUSE AND TEST THAT THE POWER IS OFF BEFORE WIRING OR SERVICING!

1. Zipline Retrofit Kit fits in 2' x 2' and 2' x 4' luminaire (see Figure 1).
 2. Open diffuser door and remove lamps, ballast cover, lampholders, lampholder leads and ballast (see Figure 3).
 3. Drill four mounting holes (two on each side) using a number 29 drill bit (0.136" diameter). Refer to Figure 2 for mounting hole locations.
 4. **Optional:** Attach foam pads to bottom of ballasted lampholder module and bottom of lampholder module to raise both lampholders 0.10 inch if required to clear protrusions and bumps (see Figure 8).
 5. Assemble ballasted lampholder module near wiring port using two #8-18 screws and assemble lampholder module as shown (see Figures 2, 4).
 6. Attach Yellow wire from ballasted lampholder into lampholder module and assemble to luminaire using two #8-18 screws (see Figures 5-7).
 7. Attach provided luminaire label to luminaire ensuring label is visible during rewiring (see Figure 4).
 8. Use wire nuts (not supplied) to connect Black and White leads to the power supply line (see Figures 5-7).
 9. Assemble reflector onto the mounting tabs that are built into both modules (see Figure 4).
- NOTE:** If reflector is not used, exposed wiring **must** be covered per local codes and regulations.
10. Install all lamps (see Figure 4).
 11. Replace diffuser (if desired).

PARTS LIST

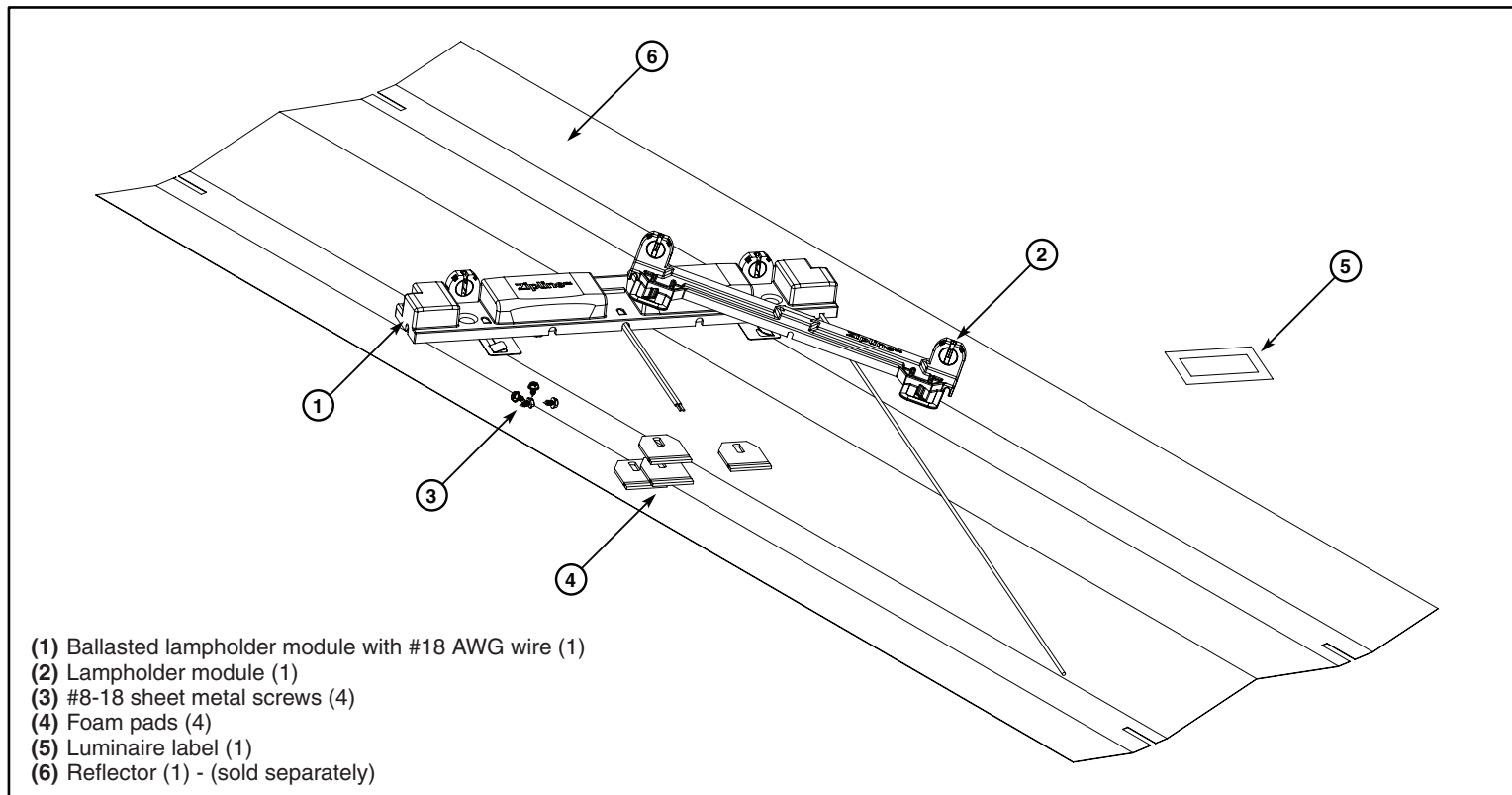


Figure 1

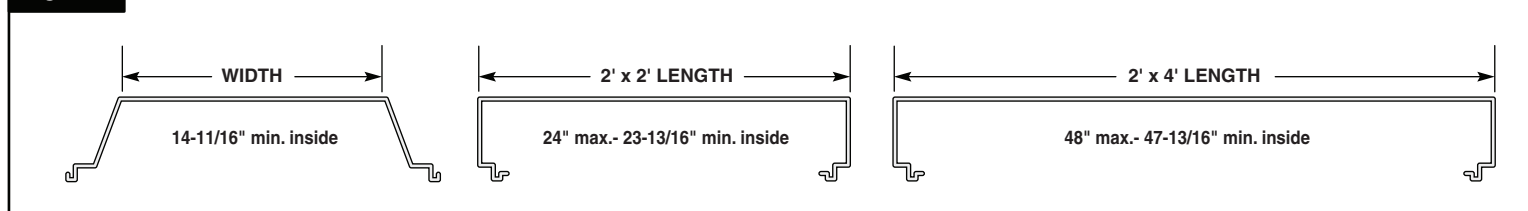
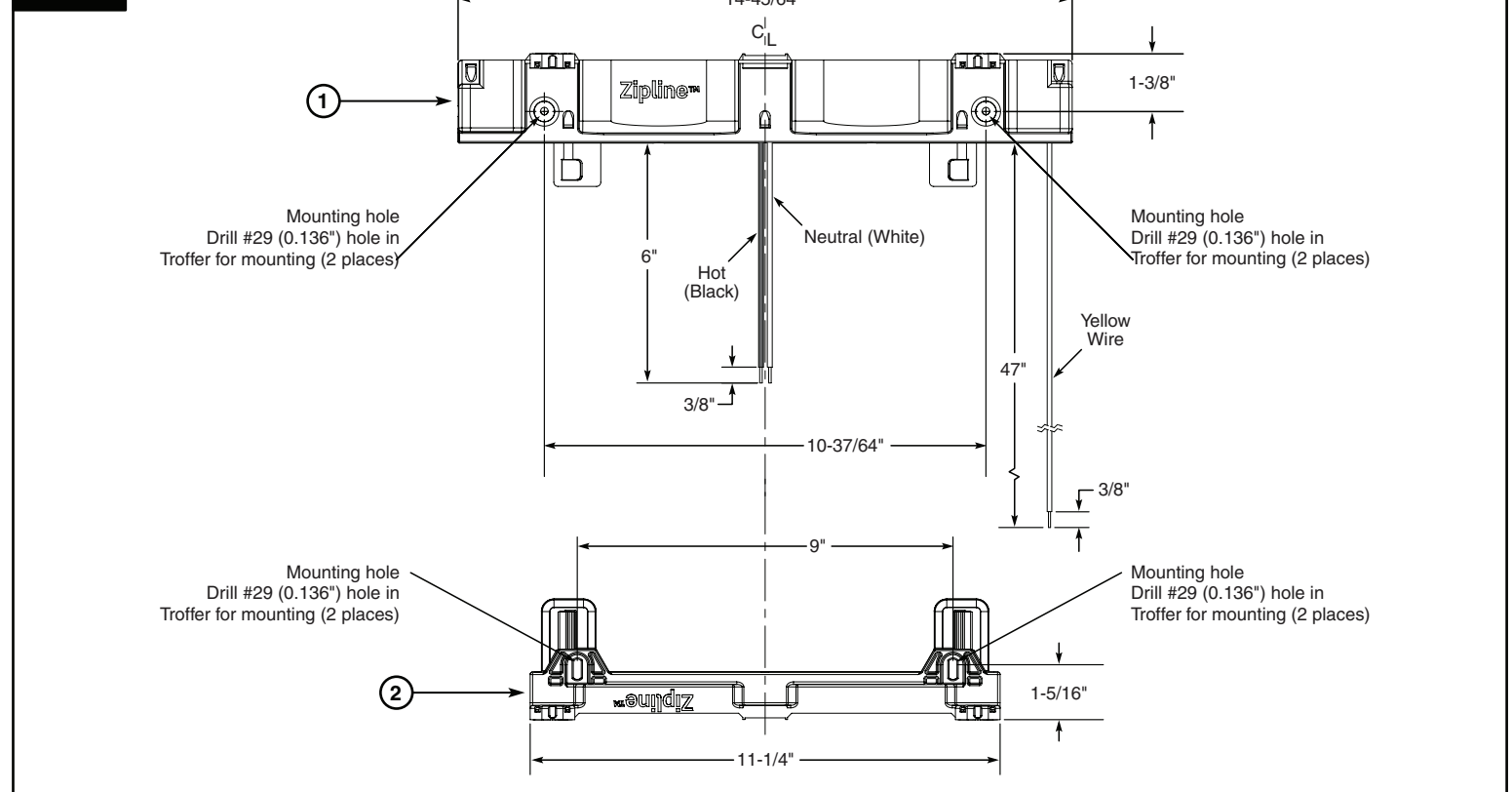
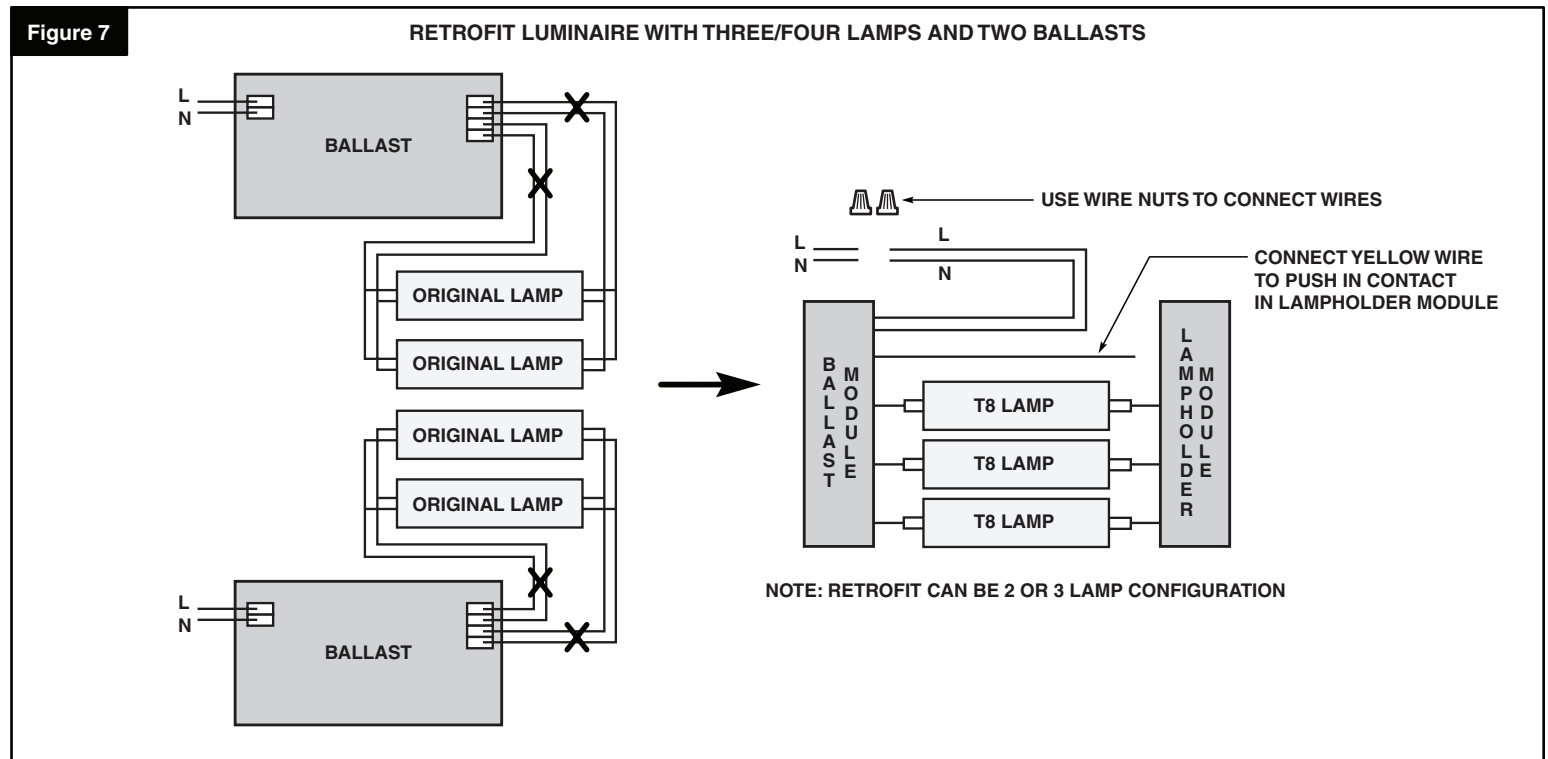
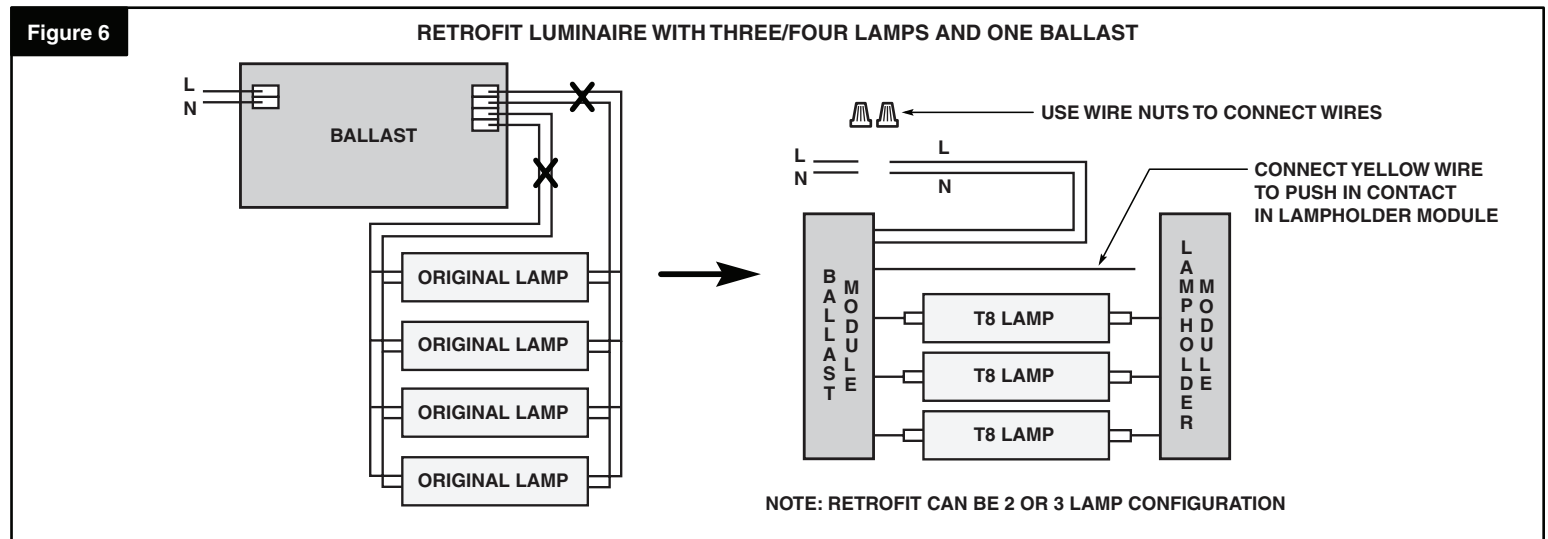
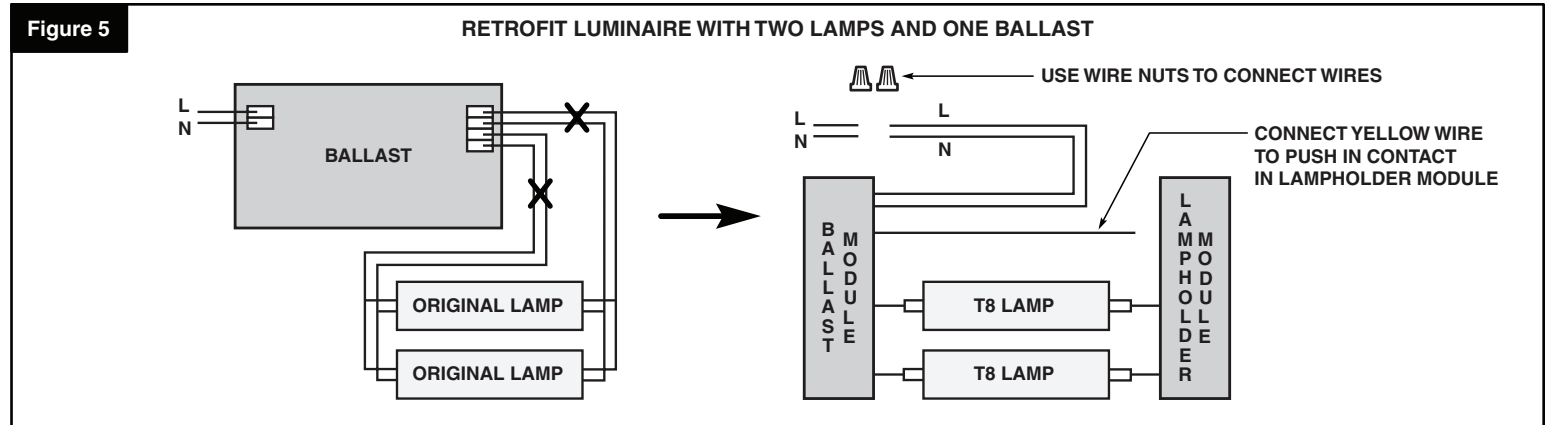
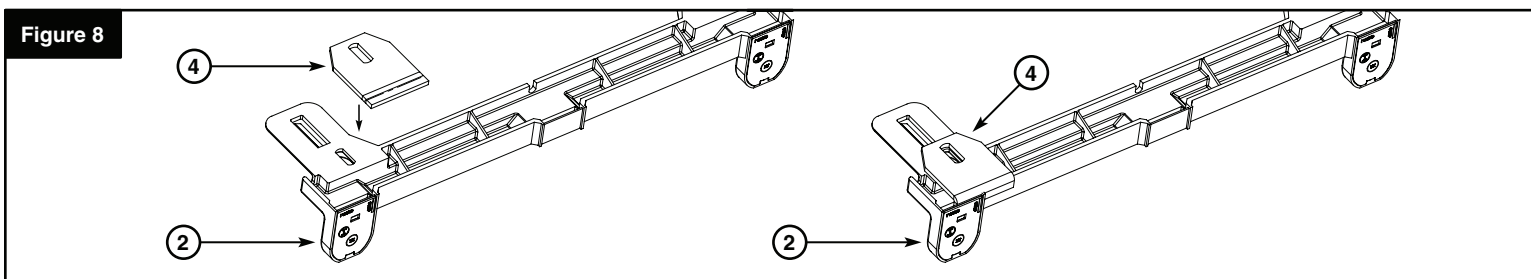
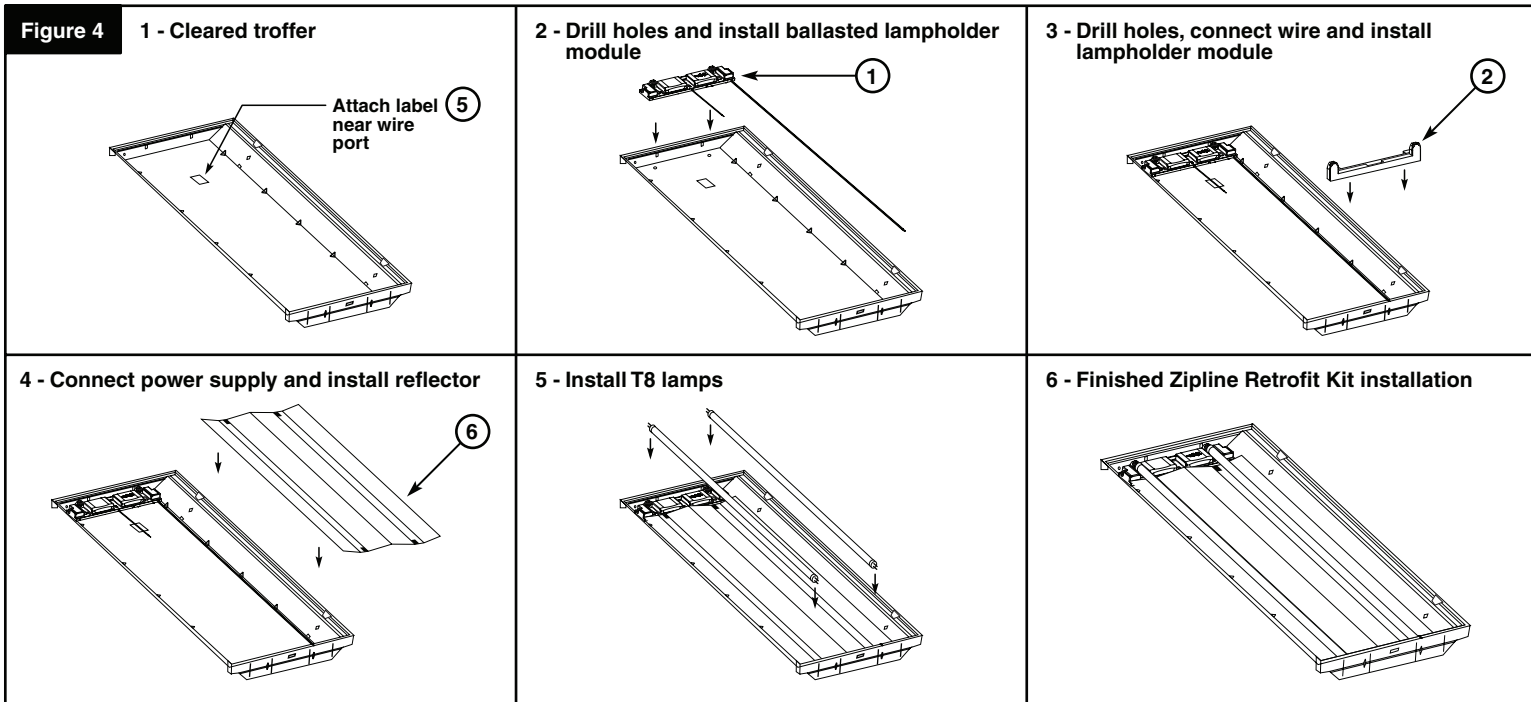
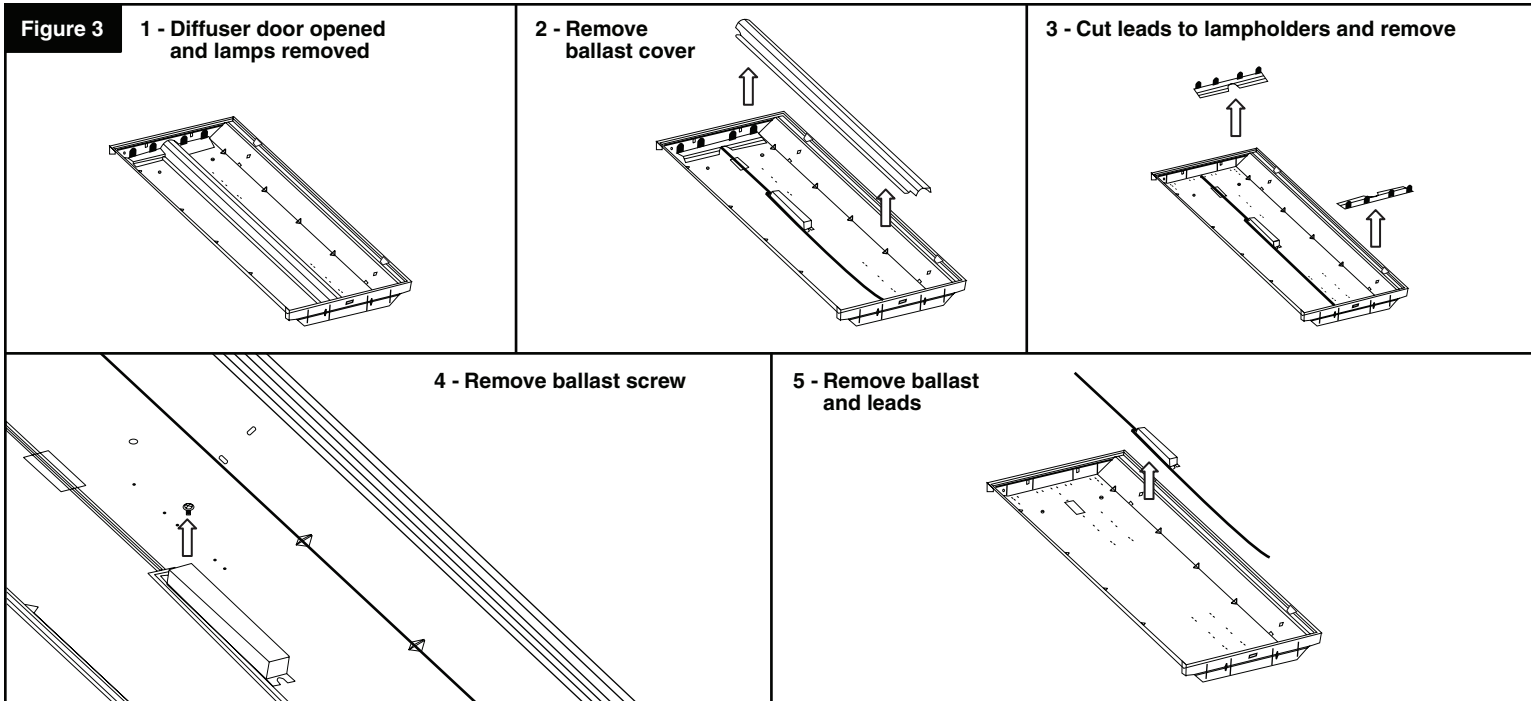


Figure 2





LIMITED 5 YEAR WARRANTY AND EXCLUSIONS

Leviton warrants to the original consumer purchaser and not for the benefit of anyone else that this product at the time of its sale by Leviton is free of defects in materials and workmanship under normal and proper use for five years from the purchase date. Leviton's only obligation is to correct such defects by repair or replacement, at its option, if within such five year period the product is returned prepaid, with proof of purchase date, and a description of the problem to Leviton Mfg. Co., Inc. 201 North Service Road, Melville, N.Y. 11747. This warranty excludes and there is disclaimed liability for labor for removal of this product or reinstallation. This warranty is void if this product is installed improperly or in an improper environment, overloaded, misused, opened, abused, or altered in any manner, or is not used under normal operating conditions or not in accordance with any labels or instructions. There are no other or implied warranties of any kind, including merchantability and fitness for a particular purpose, but if any implied warranty is required by the applicable jurisdiction, the duration of any such implied warranty, including merchantability and fitness for a particular purpose, is limited to five years. Leviton is not liable for incidental, indirect, special, or consequential damages, including without limitation, damage to, or loss of use of, any equipment, lost sales or profits or delay or failure to perform this warranty obligation. The remedies provided herein are the exclusive remedies under this warranty, whether based on contract, tort or otherwise.