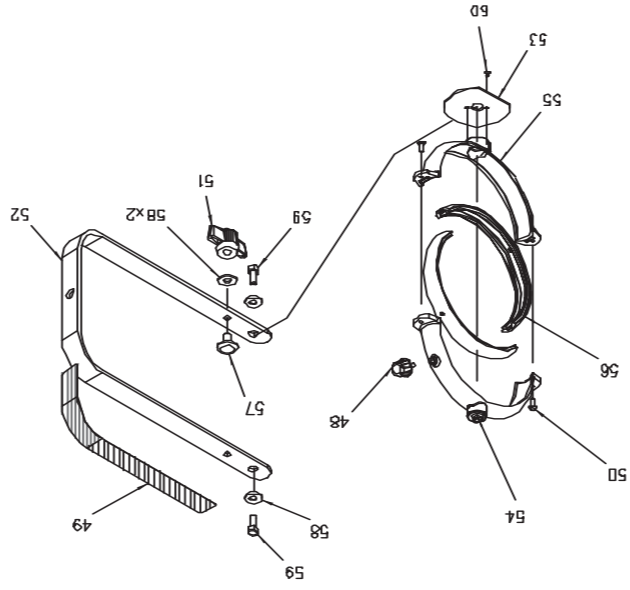
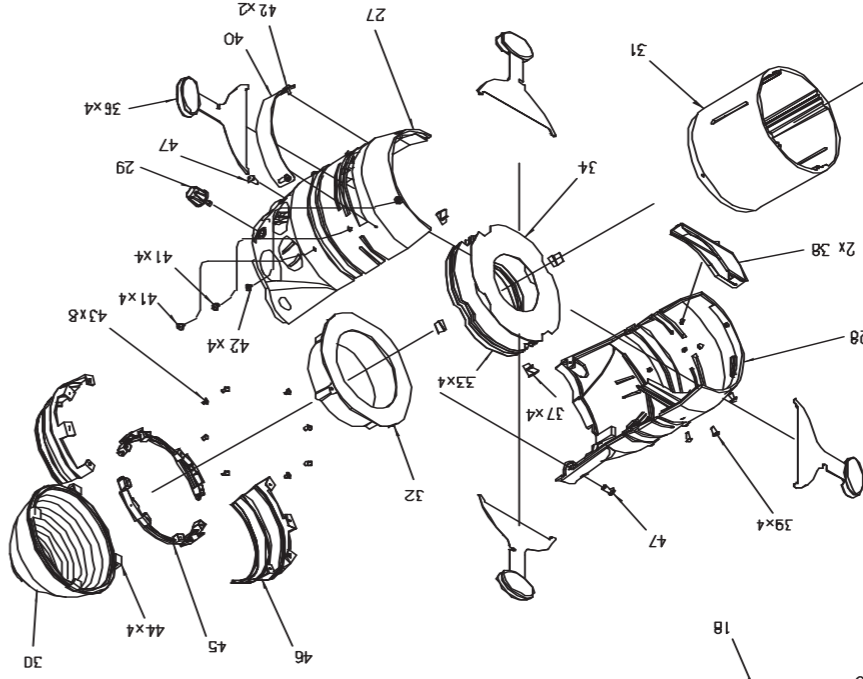
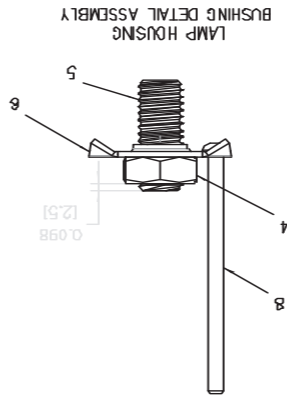
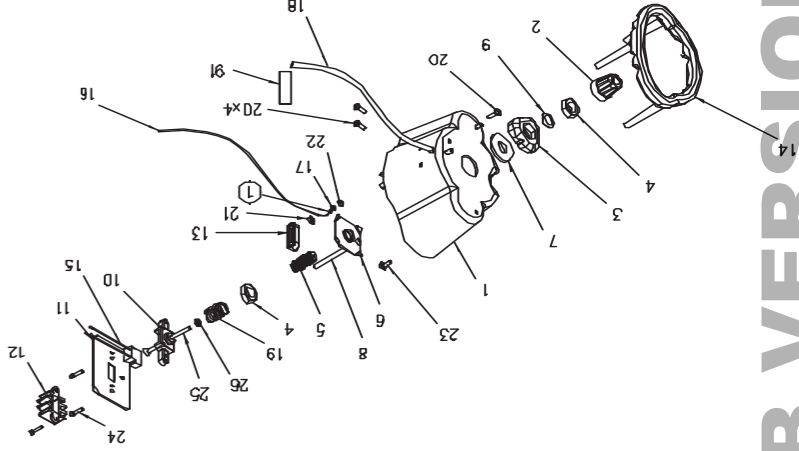


Spare Parts Kit Chart



Item#	Description	Qty.**
52	Yoke, Bent	1
Lelpsp-hdw-yk, Yoke Hardware Kit		
51	Tilt Handle	1
57	5/16-18 x 1/2" Step Bolt, Steel, Zinc	1
58	5/16" Flat Washer, Steel, Zinc	3
59	5/16 - 18 x 3/4" Hex Bolt, Steel, Zinc	2
Lelpsp-knob, Fixture Knobs		
29	Lamp housing Locking Handle	1
48	Locking Handle	1
64	Lens A (4.5 x 6.25)	1
73	Lens Cushions	4
76	Lens Cushions - modified	4

Item#	Description	Qty.**
74	#10 Flat Washer, Steel, Zinc	1
75	Lens Cushions	1
76	Lens Cushions - modified	4

** Cross reference with above illustration.
** Quantity supplied in Spare Parts Kit.

Item#	Description	Qty.**
65	Lens B (4.5 x 7.5)	1
75	Lens Cushions	4
76	Lens Cushions - modified	4

Item#	Description	Qty.**
66	Lens C (4.5 x 9.25)	1
75	Lens Cushions	4
76	Lens Cushions - modified	4

Item#	Description	Qty.**
75	Lens D (5.2 x 12)	1
76	Lens Cushions	4
67	Lens D (5.2 x 12)	1

Item#	Description	Qty.**
2	Lamp Focus Knob	1
3	Lamp Center Knob	1
4	9/16 - 18 Hex Jam Nut, Steel, Zinc	2
7	9/16 X 1.469" Washer, Steel, Zinc	1
9	Center Crescent Shape Spring	1

Item#	Description	Qty.**
5	Center Knob Bushing	1
6	Threaded Clear Washer	1
10	Lamp holder Bracket	1
11	Reaming Bracket	1
12	Heat Sink	1
13	Cord Grip	1
15	Lampholder, 969	1
16	Ground Wire	3.5
17	Terminal Ring 18-22, #8 hole	1
18	Shielding, acrylics	3
19	Lamp Adjust Spring, 9/16 x 1.500	1
20	8-32 x 5/8" SEMS Pan Head Phillips, Steel, Black Oxide	3
21	8-32 Keps Nut, Steel, Zinc	1
22	#8 Star Washer, Black Oxide	1
24	6-32 x 1/2" Filler Head Phillips, Steel, Black Oxide	3
25	10-24 x 3.5" Flat Head Phillips, Steel, Zinc	1
26	10-24 KEPS Nut, Steel, Zinc	1

Item#	Description	Qty.**
35	Shutter	4

Item#	Description	Qty.**
34	Gate	1
33	Shutter Spacer	4
37	Spring Shutter Clips	4

Item#	Description	Qty.**
1	Gobo cover	1
40	Gobo cover	2
42	8-32 x 5/16" SEMS Pan Head Phillips, Steel, Black Oxide	2

Item#	Description	Qty.**
30	Reflector	1
45	Reflector Mount	2
46	Reflector Support	2
44	Lens Cushions - modified	4
43	6-32 x 1/4" Fan Head Phillips, Steel, Black Oxide	8

Item#	Description	Qty.**
14	Handle	1
23	10-24 x 1/2" SEMS Pan Head Phillips, Steel, Black Oxide	3

Item#	Description	Qty.**
1	Lamp Housing, Complete	1



Building a Connected World

Leviton Lighting Management Systems
Division Headquarters
20497 SW Teton Avenue,
Tualatin, OR 97062
Customer Service Telephone: 800.736.6682
Customer Service Fax: 503.404.5594
Technical Services: 800.959.6004

Leviton Manufacturing
Company, Incorporated
59-25 Little Neck Parkway,
Little Neck, NY 11362-2591
Visit Leviton's websites at
www.leviton.com
www.nstcorp.com
www.colortran.com

Copyright © 2005 Leviton Manufacturing Company, Inc. All Rights Reserved. Specifications and pricing subject to change at any time.

PK-93183-10-00-2A

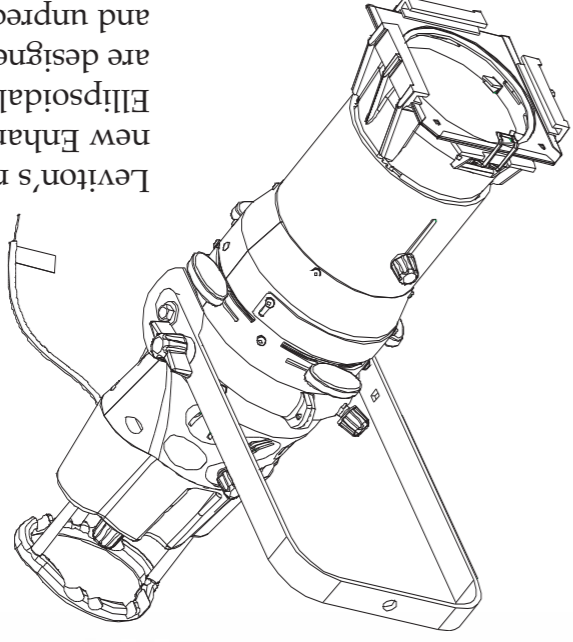
Warranty Information: LEVITON LIGHTING CONTROLS DIVISION of Leviton manufacturing Co. Inc. warrants its Dimmer Systems and Controls to be free of material and workmanship defects for a period of two years after system acceptance or 26 months after shipment, whichever comes first. This Warranty is limited to repair or replacement of defective equipment returned Freight Pre-Paid to Leviton Lighting Controls Division at 20497 Teton Ave., Tualatin, Oregon 97062, USA. User shall call 1-800-959-6004 and request a return authorization number to mark on the outside of the returning carton, to assure that the returned material will be properly received at Leviton. All equipment shipped back to Leviton must be carefully and properly packed to avoid shipping damage. Replacements or repaired equipment will be returned to sender freight prepaid, F.O.B. factory. Leviton is not responsible for removing or replacing equipment on the job site, and will not honor charges for such work. Leviton will not be responsible for any loss of use or subsequent damages should any of the equipment fail during the warranty period, but agrees only to repair or replace defective equipment returned to its plant in Tualatin, Oregon. This warranty is void on any product that has been improperly installed, overhauled, short circuited, abused, or altered in any manner. Neither the seller nor Leviton shall be liable for any injury, loss or damage, direct or consequential arising out of the use of or inability to use the equipment. This Warranty does not cover lamps, ballasts, and other equipment which is supplied or warranted directly to the user by their manufacturer. Leviton makes no warranty as to the fitness for purpose or other implied Warranties.

Enhanced Performance
Ellipsoidal Reflector
Spotlight
User Guide for
Spotlights
15°, 19°, 26°, 36°, 50°
Models: #Lelxx

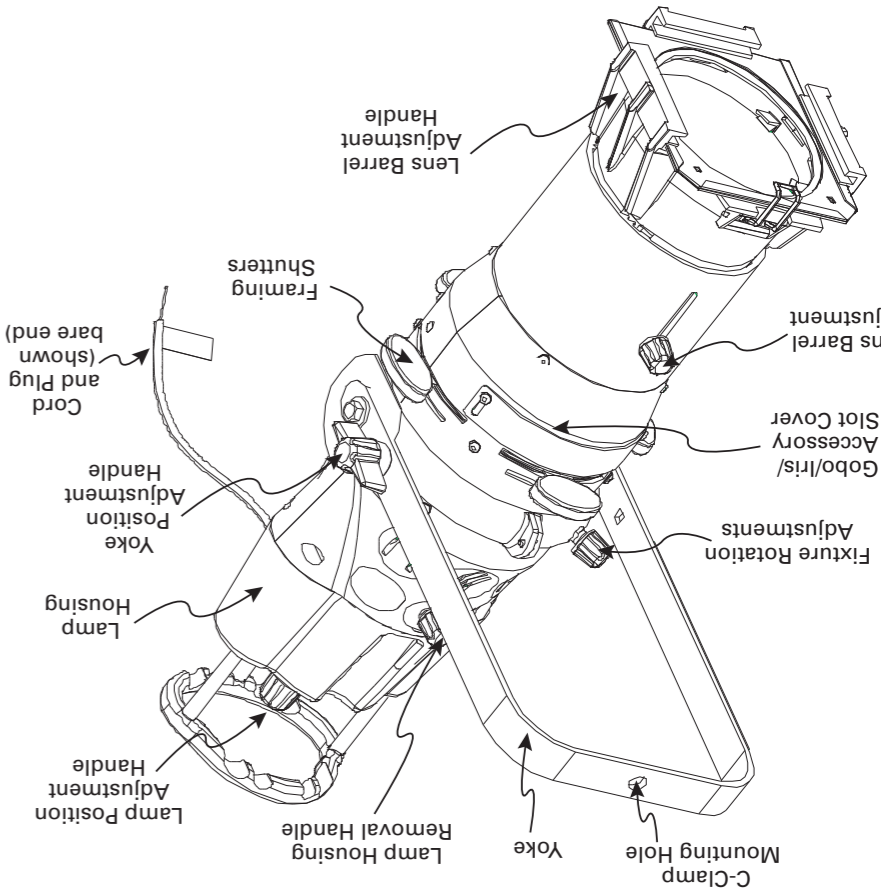


Building a Connected World

- Unparalleled Soft Focus Capabilities
- Cool-Touch handles
- Smooth & Easy Operation
- Effortless Re-Lamping
- Movable lenses for various field angle configurations
- Awesome Photometric Performance



Leviton's revolutionary new Enhanced Performance Ellipsoidal Reflector Spotlights are designed for both ease-of-use and unprecedented performance offering the following features:



To setup and use your fixture for the first time, please follow these instructions:

CAUTION: DO NOT TOUCH THE GLASS OF THE NEW LAMP, ANY BODY OILS ON THE LAMP WILL CAUSE "HOT SPOTS" ON THE LAMP AND CAUSE PREMATURE LAMP FAILURE

CAUTION: LAMP HOUSING AND OTHER FIXTURE COMPONENTS ARE HOT!!! WAIT FOR DEVICE TO COOL AND WEAR PROTECTIVE CLOTHING PRIOR TO CONTACT WITH THE FIXTURE.

CAUTION: FOR STAGE OR STUDIO USE ONLY

Preparation

Open & Unpack your fixture.

You should have the following items:

i. Fixture body, reflector housing
ii. Lens Tube (installed in reflector housing
iii. C-Clamp
iv. Gel Frame

v. Plug installed on fixture (if ordered as such)

Install C-Clamp

Install the provided C-clamp into the fixture yoke by screwing into the hole in the yoke, and

Safety Cable - Leviton recommends always using a safety cable when using any lighting fixture. The safety cable should loop through the fixture yoke and be connected to a secure attachment at the other end. Safety cables can be purchased for your fixture from your local theatrical supply or as Leviton part #a00sc-000.

Inspect all of the components. If any of them are damaged, please contact the shipper to make claim with them. If any of the above components are missing, please contact our Customer Service Department at 800.736.6682.

Installation and Use of your new Fixture

To install and/or replace the lamp in your fixture, follow this procedure:

1. Disconnect fixture from power.
2. Loosen, but do not remove the Lamp Housing Removal Handle.
3. Separate the Lamp Housing from the fixture.
4. If replacing the lamp, remove the current lamp.
5. Install one of the new lamps from the chart below.
6. Reinstall Lamp Housing and tighten Lamp Housing Removal Handle.

Lamp Installation/Replacement

Wattage	Voltage	Lamp Life	Lumens	Color	ANSI Designation	Leviton Part Number
575W	115V	300hrs	14,500	3200K	GLC	LogLc-000
575W	115V	1500hrs	13,000	3050K	GLA	LogLa-000
750W	115V	300hrs	19,000	3200K	GLD	LogLd-000
750W	115V	1500hrs	17,400	3050K	GLE	LogLe-000
600W	230V	250hrs	14,000	3200K	GKV	Logkv-000
600W	230V	1500hrs	11,000	3000K	GKV/LL	Logkv-LL0

Lamp Facts:
Base: G9.5
Medium 2-Pin
Max. Voltage: 240V
MOL: 101mm
LCL: 60.5mm
DIA: 18mm

Bench Focus of Fixture (Lamp Centering)

To Bench Focus your fixture:

1. Firmly attach the fixture to a pipe & boom or other work surface at a comfortable height, at an appropriate distance from the wall.

2. Point Fixture at a wall, and connect to power.

3. Examine the pattern produced on the wall. Using the lamp adjustment screws at the rear of the fixture, adjust the "centering" of the lamp until optimum performance is achieved.

4. Examine the pattern produced on the wall. Using the lamp adjustment screws at the rear of the fixture, adjust the on-axis (in/out) position of the lamp until desired performance for both center-peak and flat field adjustment is achieved.

5. Disconnect the fixture from power and allow to cool before removing.

Hang Fixture

1. Hang the fixture from the pipe, allow it to hang in it's natural position, and sufficiently tighten the C-Clamp.

2. Connect Safety Cable (Leviton part #a00sc-000) to the fixture and a suitable anchor.

Focus Fixture

To focus your fixture, please follow these steps:

1. Bench focus the fixture per previous instructions.

2. Hang the fixture per previous instructions.

3. Do not remove from the fixture but pull out all (4) shutters completely so that they do not impede the path of light.

4. Connect the fixture to it's power source. Ensure that if a dimmer is the power source that it is turned on.

5. Aim the fixture at it's desired target, usually chest height of a person standing at the location you want to light.

6. Loosen the Lens Position knobs on the top of the lens barrel so that the barrel can be moved in and out freely. Set the position of the lens barrel so that the desired focus is achieved. Usually, you want to move the lens barrel until a hard edge is seen, and then pull the barrel slightly back or forward to soften the edge. When soft focusing a fixture, generally more of a "peak" lamp focus is desired.

7. Rotate the lens barrel and adjust the shutter so that the desired framing of the object, zone, scenery, etc. is completed.

8. Insert any color, diffusion, or other media into the media holders.

Beam Shaping

The LEO ellipsoidal spotlight has several features which allow you to shape the beam to your needs. These features are best learned by experience and practice.

The available features are as follows:

- (4) Shutters, each in it's own plane
- 360° Rotatable Lens Barrel
- Beam Focus
- Accessory slot for gobo's, gobo rotators, irs, and other accessories.

Color/Diffusion Media

The LEO ellipsoidal spotlight has (2) media slots in the front of the fixture which can be used for color, diffusion, snoots, or other media and/or accessories. Please remember that the spring clip should always be in the closed & locked position when you are not inserting or removing media.

Maintenance

Reflector

The reflector in your fixture is made of a high quality glass and reflective coating which should require little maintenance. However, from time-to-time as dust accumulates in your fixture and other causes due to your environment the reflector may become dirty and require cleaning to restore proper light output.

To clean your reflector, remove the reflector from the fixture and wipe clean with cotton, tissue, or a soft cloth moistened with isopropyl

alcohol, then, rinse with water.

Lenses

The lenses in your fixture are precision molded using the highest quality low-expansion borosilicate glass. Since this spotlight is state-of-the-art, quality lenses are necessary to withstand the high radiation energy densities. NEVER use a lens that is chipped, cracked, scratched, or tinted. Replacement lenses can be ordered as required.

To clean your lenses, remove the lenses from the fixture, and wipe clean with cotton, tissue, or a soft cloth moistened with isopropyl alcohol, then, rinse with water.

Accessories

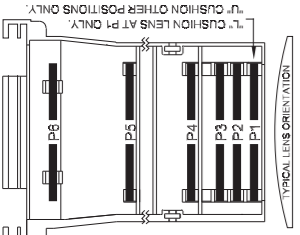
Your Ellipsoidal fixture can accommodate many different accessories after the gate in accessory area, accessed by sliding back the "Gobo/Iris/Accessory Slot Cover":

Accessory Compartment Dimensions: 4 3/4" wide, 1/2" depth, 3" dia. Gate.

Gobo Holder 3.70" Wide, Size "A" Gobo, 3" Diameter Pattern.

Lens Position Guide

Leviton's patented lens system allows you to achieve 15°, 19°, 26°, 36°, & 50° field angles using different combinations and positions of the same (4) lenses. That means depending on the lenses you have in your possession, or those purchased as spares, you can convert fixtures from one field angle to the other in the field!



Of the four lenses, one is a large 5.2" diameter lens and can only be located at position P6. Of the other (3), one has a Red mark, the other a Blue mark, and the third is unmarked. This information can be used to help you identify your lenses.

To access the lenses, remove the lens barrel from your fixture, then remove the (4) screws allowing you to separate the two halves of the lens barrel.

Please reference the position guide and chart to determine which combination of lenses and their positions in the lens barrel are required

to achieve the differing field angle.

Field Angle	Required Lenses	Part Numbers
15°	(1) 5.2" dia. Lens at P6	LelSp-Lens219
19°	(1) Lens with NO MARK at P5	LelSp-Lens218
26°	(1) Lens with "BLUE" mark at P1	LelSp-Lens217
26°	(1) Lens with NO MARK at P5	LelSp-Lens218
36°	(1) Lens with "BLUE" mark at P1	LelSp-Lens217
36°	(1) Lens with NO MARK at P4	LelSp-Lens218
50°	(1) Lens with "RED" mark at P1	LelSp-Lens216
	(1) Lens with "BLUE" mark at P4	LelSp-Lens217