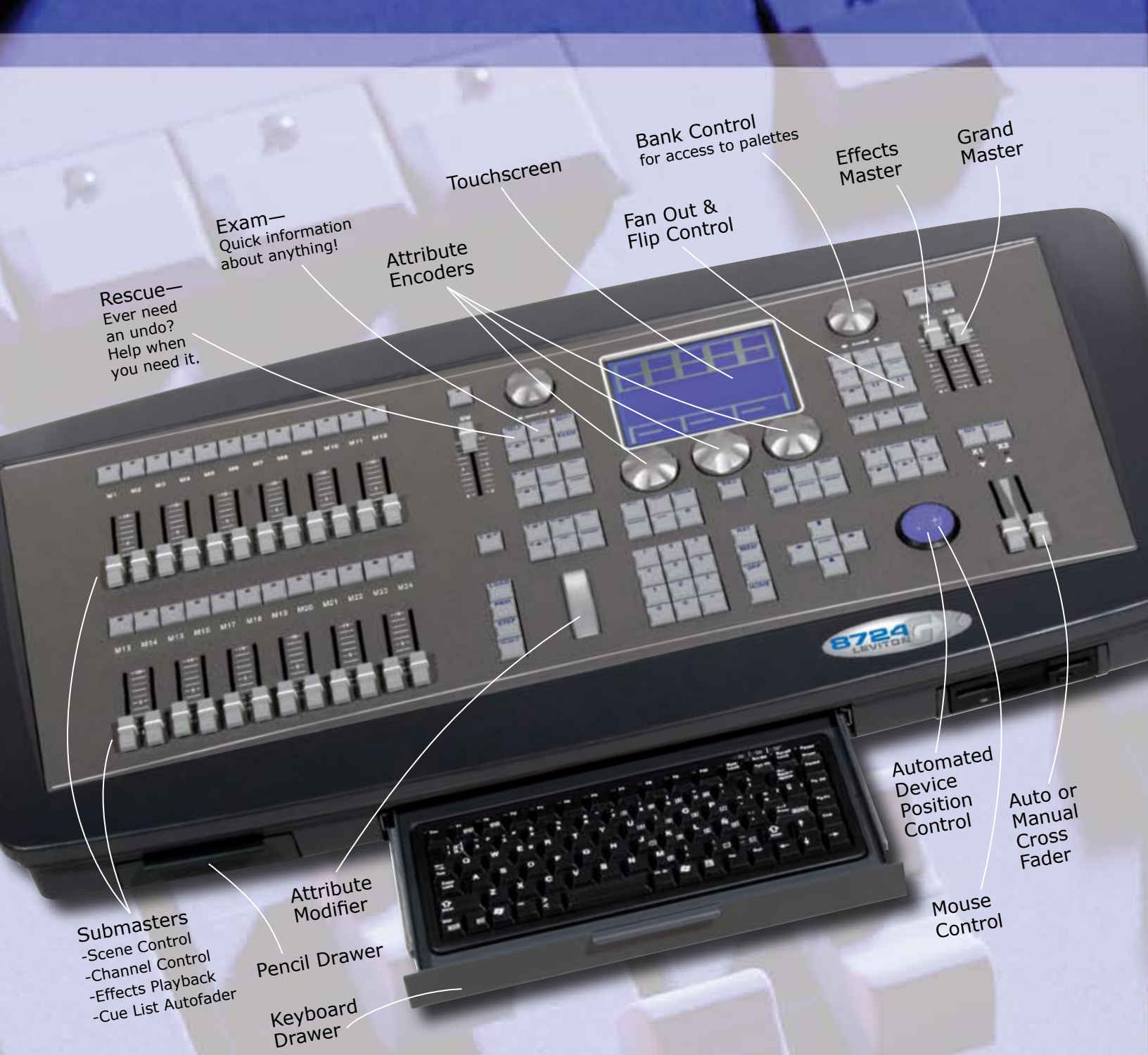


8700
SERIES
GL GS GX


LEVITON[®]
Building a Connected World





The 8700 Series lighting control consoles are everything the sophisticated lighting professional needs with enhanced features which make creating your design, programming your show, and executing your masterpiece easy and rewarding. The console delivers all the power you need offering features like a slide out key board, touch screen and outputs for all your possible connections. Rugged and available in multiple models and capacities, the 8700 series are the consoles for your leading edge creation!

GX Series shown. Other models similar.



Part Number	Sub-Masters	Channels	DMX Outputs	VGA Outputs
GX Series - with integral touch screen and keyboard				
P8724-GX	24	2048	4	4
P8748-GX	48			
P8724-GXT (touring)	24			
GS Series - with integral keyboard				
P8724-GS	24	1024	2	2
P8748-GS	48			
P8724-GST (touring)	24			
GL Series				
P8724-GL	24	512	1	1
P8724-GXT (touring)				

For full specifications see product data sheets.

Touring Models

- Brief case design for rugged portability
- Integrated display
- 24 Masters





Power Input and Switch

Work Light and Switch

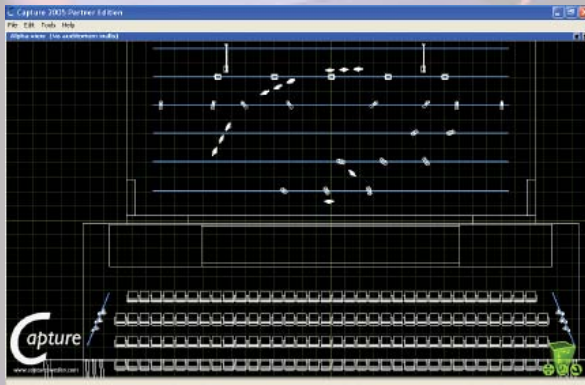
Peripherals

- Dedicated Wireless Remote
- PocketPC Wireless Remote

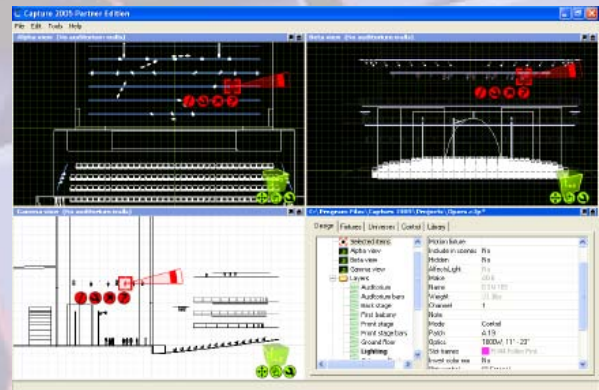


Capture – Visualization & Design Package

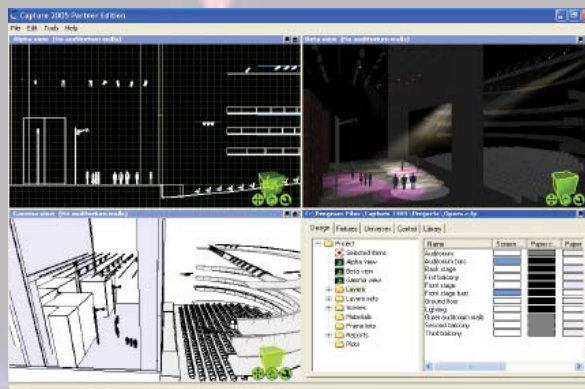
Light/Basic version provided with every console. Upgrades available.



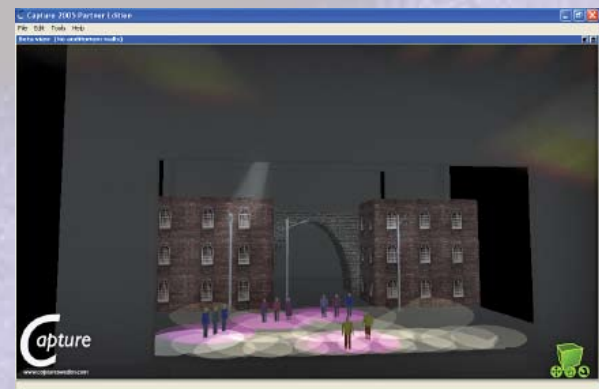
Drag and drop layout of basic elements for quick design creation. Draw the building then layout the fixtures.



Multiple views to assist with 3D layout, fixture aiming and design conceptualization.



Rendered lit views for full design realization.



Completed integrated visualization with the 8700 series for off line programming.

The Models ...



8748 GX



8724 GX



8724 GXT



8748 GS



8724 GS



8724 GST



8724 GL



8724 GLT

Key Feature List

24 or 48 Submasters — 24 or 48 submasters depending on model. Submasters can activate a scene, cue list, effect, effect rate, attribute or channel.

Conventional Lighting — full support for conventional lighting and traditional cue list control.

Automated Devices — automated devices position control via trackball, attribute control via touchscreen (GX series) or encoders (all models).

Cues — support for up to 20,000 cues, each with up to nine parts. Jumps, loops, follows, split fade times and other common parameters supported.

Visualization & Design — visualization and design assistance provided with the included Capture software package (PC required).

Full Tracking Backup — full tracking backup capability both to secondary console or connected PC.

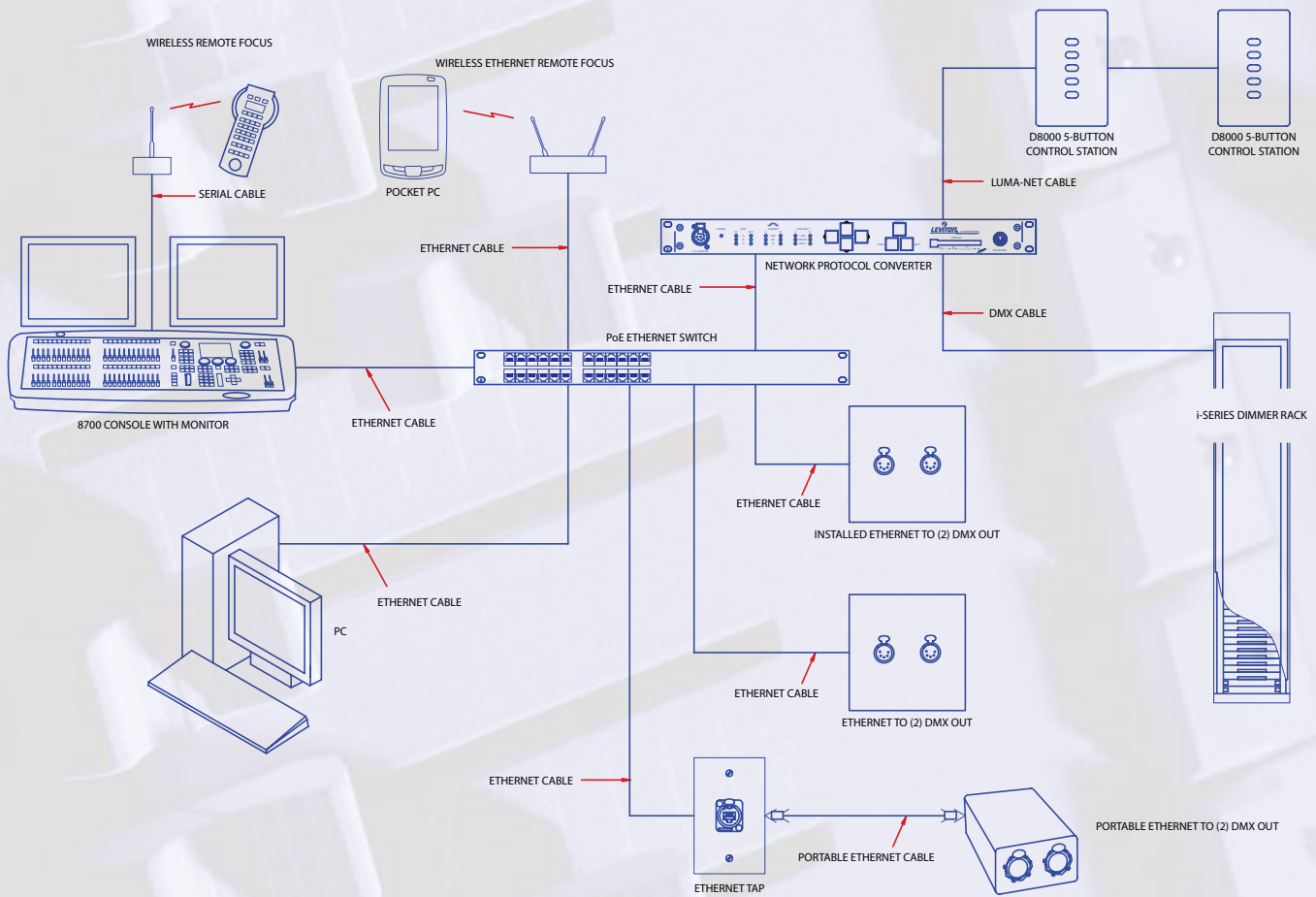
Effects Generation — effects engine for rapid creation of chases, patterns, shapes, operating modes. Many attributes offer easy live modification.

Capacities — 20,000 cues, 2000 groups, 2000 macros, 2000 effects, 2000 pages, 99 libraries.

Response Curves — custom curves for most channel parameters.

Off & On Line Editing — from the comfort of your PC.

The Network



Leviton Manufacturing Company, Inc.

Lighting Management Systems Division

20497 SW Teton Avenue

Tualatin, Oregon 97062

Customer Service: (800)736-6682

Customer Service Fax: (503)404-5594

Technical Services: (800)959-6004

Website: <http://lms.leviton.com>