

# INDUSTRIAL ENERGY MONITORING KIT

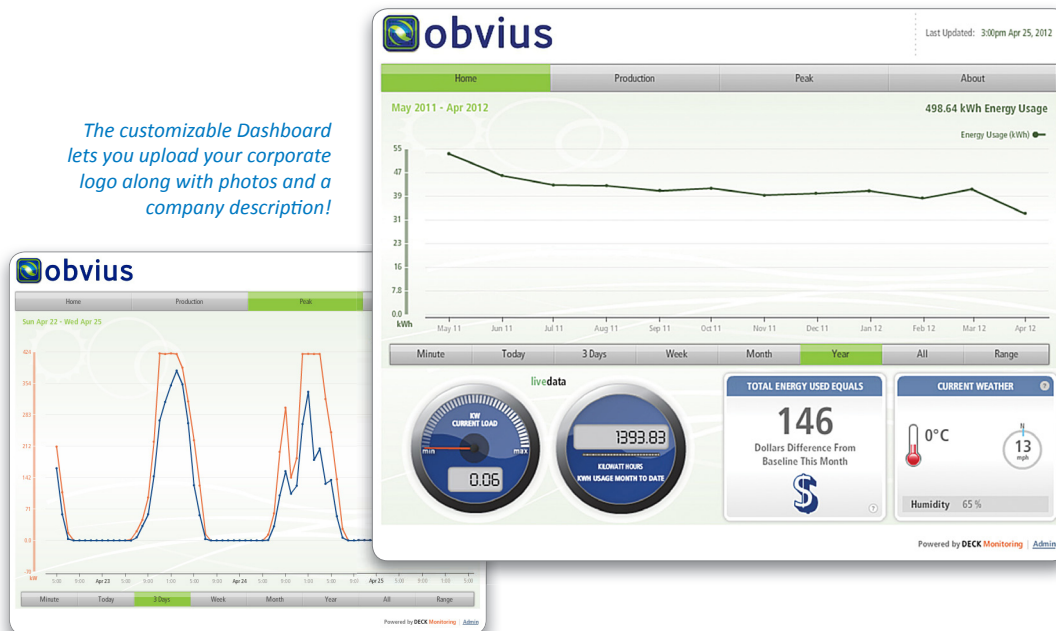
Energy monitoring technology can help to proactively assess, measure, and manage energy usage in manufacturing.

*It's time to start looking at energy as a controllable input cost.* It is estimated that manufacturing uses 33% of all global energy. The **Industrial Energy Monitoring Kit** from Obvius is the first step to create effective energy management policy and process in your organization. This is an easy and cost-effective way to start working toward ISO 50001.

The Energy Monitoring Kit gives you customizable web-based tools to visualize and analyze your energy data, along with alarm notifications and other useful features. These tools are easy and intuitive... you don't have to be an engineer to see and understand energy trends such as peak hour usage or production performance. This technology helps you take meaningful steps towards your energy policy goals, including setting baselines and performance alarms.

You also get a customizable Dashboard display (shown below). The interactive features here are a great way to communicate your basic energy data to a broad audience, helping every member of the team work together to achieve your energy policy targets. This public-facing web page can also be useful for green PR campaigns, and it is ideal as a kiosk display in your facility.

*The customizable Dashboard lets you upload your corporate logo along with photos and a company description!*



Each monitoring package includes a flexible electric submeter along with a data acquisition device to prepare data for the web (shown at right). Data is pushed out through the local network, or by a cellular modem for remote project locations. You'll have the ability to manage and promote multiple sites. Our software also makes it quick and easy to input other utility usage data for a complete look at your operations.

*EMB AcquiSuite A8810  
PowerScout 3 Meter*



## ABOUT OBVIUS

Obvius is a leading energy solutions provider offering meters, wireless metering, data acquisition, software, and monitoring technologies used to display and manage energy consumption and renewable energy generation.

## SOLUTIONS

- Data Acquisition
- Wireless Communication
- Meters & Sensors
- Custom Packaged Solutions
- Integration & Software Partners

## HEADQUARTERS

Hillsboro, Oregon

## CONTACT US

sales@obvius.com

503 601 2099

866 204 8134 (USA only)