

Partnership and Growth

Top selling products for ongoing success



THE LEVITON LOAD CENTER

Access whole-home energy use data from anywhere with the award-winning Leviton Load Center and My Leviton app. New 2nd Gen Smart Circuit Breakers provide unparalleled control of your home's electrical system, including remote breaker scheduling and control to save energy, and intuitive insights into energy usage from the grid and alternate energy sources.

APPROACHABLE

- Modern design with intuitive functionality and appealing aesthetics
- LEDs communicate trip condition and type of fault (AF/GF)
- Modular design allows for easy upgrades to smart circuit breakers

SMART

- Remote ON/OFF control and time/day-based circuit scheduling
- Receive notifications and alerts for breaker activity, anomaly detection and energy usage
- Whole home energy monitoring

FASTER INSTALLATION

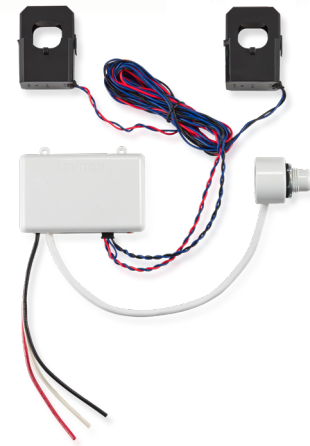
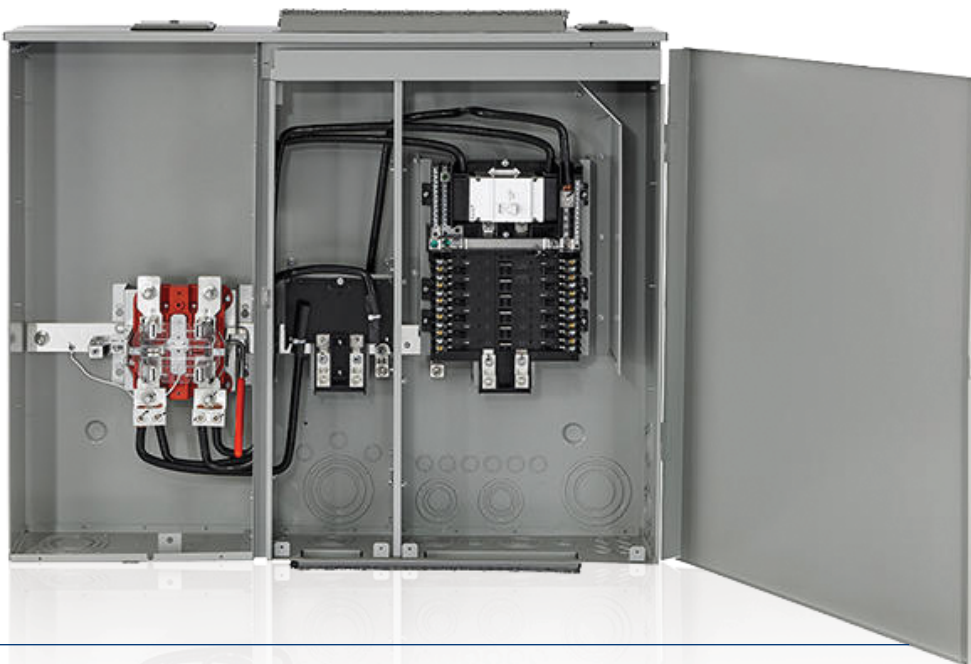
- Allows for all wiring at rough-in, without any circuit breakers present
- Only Fully Plug-On Breaker System (up to 60A)
- Leviton Circuit Breakers simply snap in for up to 25% faster install



NEW

NEW LOAD CENTER 400A OUTDOOR METER MAIN

Leviton's portfolio of 400A Meter-Combination Load Centers meet the increasing demand for larger electrical service. Each Meter-Combination Load Center comes with one Main Breaker factory installed, a 12-space distribution section, and feed-thru lugs. The secondary main breaker mounting section offers the installer flexibility to tailor the total amperage (400A Max) to the needs of the project.



NEW WHOLE HOME ENERGY MONITOR

Provides real-time energy consumption data and controls Leviton Smart Circuit Breakers. When paired with Leviton 2nd Gen Smart Circuit Breakers, the LWHEM provides unparalleled control of your home's electrical system, including alerts, notifications and the ability to remotely control and schedule circuit breakers.

**TOP
Sellers**

LB120-DFT

20A 1-Pole
AFCI/GFCI
Dual Function
Branch Circuit
Breaker



LB115-AFT

15A 1-Pole
AFCI Branch
Circuit Breaker



LB120-AFT

20A 1-Pole
AFCI Branch
Circuit Breaker



LB115-DFT

15A 1-Pole
AFCI/GFCI
Dual Function
Branch Circuit Breaker



LP420-BPD

Indoor Load Center with
200A Main Circuit Breaker
Factory Installed, 42 Spaces



LB120-T

20A 1-Pole
Standard Branch
Circuit Breaker



LS820-BTD

Outdoor Meter Main Combo with
200A Main Circuit Breaker
Factory Installed, 8 Spaces



LB120-GFT

20A 1-Pole
GFCI Branch
Circuit Breaker



LB230-G

30A 2-Pole GFCI
Branch Circuit Breaker



LB230-T

30A 2-Pole Standard
Branch Circuit Breaker



Load Center Growth Products

Description	Spaces/Circuits	Rating	Cat. No.
AFCI/GFCI Branch Circuit Breaker, 1-Pole 120V	—	20A	LB120-DFT
AFCI Branch Circuit Breaker, 1-Pole 120V		15A	LB115-AFT
AFCI Branch Circuit Breaker, 1-Pole 120V		20A	LB120-AFT
AFCI/GFCI Branch Circuit Breaker, 1-Pole 120V		15A	LB115-DFT
Load Center, Indoor, Main Breaker Installed	42	200A	LP420-BPD
Standard Branch Circuit Breaker, 1-Pole 120V	—	20A	LB120-T
Outdoor Meter Main Combo, 8 Spaces, Ringless with Internal Trough	8	200A	LS820-BTD
GFCI Branch Circuit Breaker, 5 mA Ground Fault Protection of Personnel, 1-Pole 120V	—	20A	LB120-GFT
GFCI Branch Circuit Breaker, 5 mA Ground Fault Protection of Personnel, 2-Pole 120/240V		30A	LB230-G
Standard Branch Circuit Breaker, 2-Pole, 120V/240V		LB230-T	

Please visit leviton.com/loadcenter for complete ordering information, or contact your Leviton representative.

DECORA SMART®

It's easy to create a smart home by adding smart switches, dimmer switches, smart plugs, outlets, motion sensors and fan controllers that will help make your life safer and more convenient. Schedule and control using the My Leviton app or use your voice with Amazon Alexa™, Google Assistant™, or HomeKit™/Siri®. You can also connect locally to any Matter enabled smart home platform of your choice securely and reliably with a simple firmware update available in the My Leviton app. Decora Smart® offers smart solutions for every room and home, new or old, including homes that may not have neutral wiring.



NEW

NEW DECORA SMART® WI-FI ELV/LED

The D2ELV works with the My Leviton app to provide remote ON/OFF and dimming of Electronic Low-Voltage lighting such as under cabinet, toe kick, track lighting, and accent lighting. The dimmer includes bulb compatibility using the My Leviton app to fine tune performance such as forward and reverse phase selection, minimum dim/maximum bright settings, fade on/fade off, and more.



NEW DECORA SMART® WI-FI OUTDOOR PLUG-IN SWITCH

Leviton's Wi-Fi Outdoor Plug-In Switch brings your Leviton smart home outdoors to your patio, yard, driveway, porch, and more. Pair an Anywhere Switch Companion to easily control outdoor lights from inside the home without needing to run any wires.

TOP Sellers

D26HD-1BW

Decora Smart® Dimmer, Wi-Fi 2nd Gen



D215S-1BW

Decora Smart® Switch, Wi-Fi 2nd Gen



D2MSD-1BW

Decora Smart® Motion Sensing Dimmer



D2SCS-1BW

Decora Smart® with Wi-Fi Scene Controller Switch



DAWSC-1BW

Decora Smart® Anywhere Switch Companion



DAWDC-1BW

Decora Smart® Anywhere Dimmer Companion



ZW15S-1RW

Decora Smart® Z-Wave Plus 15A Switch



ZW6HD-1RW

Decora Smart® Z-Wave 600W Dimmer



ZW15R-1BW

Indoor Decora Smart® Z-Wave Plus Tamper-Resistant Outlet



ZW4SF-1BW

Z-Wave Plus Fan Speed Controller



Decora® Smart Growth Products

Description	Color	Cat. No.
Decora Smart® with Wi-Fi, 600-Watt Dimmer (2nd Gen), Single Pole, 3-Way/Multi-Location, Neutral Wire Required	White	D26HD-1BW
Decora Smart® with Wi-Fi, 15A Switch (2nd Gen), Single Pole, 3-Way/Multi-Location, Neutral Wire Required		D215S-1BW
Decora Smart® with Wi-Fi, Motion Sensing Dimmer (2nd Gen), Single Pole, 3-Way/Multi-Location, Neutral Wire Required		D2MSD-1BW
Decora Smart® with Wi-Fi Scene Controller Switch (2nd Gen), Single Pole, 3-Way/Multi-Location, Neutral Wire Required		D2SCS-1BW
Decora Smart® Wire-Free Anywhere Switch Companion for use in 3-way or up to 3 additional locations and pairs with any Decora Smart® Wi-Fi 2nd Gen device		DAWSC-1BW
Decora Smart® Wire-Free Anywhere Dimmer Companion for use in 3-way or up to 3 additional locations and pairs with any Decora Smart® Wi-Fi 2nd Gen device		DAWDC-1BW
Decora Smart® with Z-Wave Plus 15A Switch		ZW15S-1RW
Decora Smart® with Z-Wave Plus 600-Watt Dimmer		ZW6HD-1RW
Decora Smart® with Z-Wave Plus, 15A Tamper-Resistant Outlet		ZW15R-1BW
Decora Smart® with Z-Wave Plus, Fan Speed Controller		ZW4SF-1BW

Please visit leviton.com/decorasmart for complete ordering information, or contact your Leviton representative.

LIGHTING CONTROLS

Leviton offers a wide variety of box mounted lighting controls that combine sophisticated design with state-of-the-art technology. These include, dimmers, fan speed controls, timer switches, occupancy/vacancy sensors and specialty controls. Our lighting controls provide precise, dependable control and complement any residential application, while offering the potential for significant energy savings.



NEW

NEW HUMIDITY SENSOR AND FAN CONTROL

The Leviton Humidity Sensor and Fan Control automatically detects excess humidity in a room and activates the ventilation fan to lessen condensation and helps reduce energy usage by automatically operating the fan only when needed. It's the only humidity sensor on the market that does not require a neutral wire for installation and is ideal for use in areas prone to high humidity and dampness like bathrooms, basements, laundry rooms and home spas.



NEW DECORA® COUNTDOWN TIMER

Leviton's new countdown timers have a slick modern look and are available in 15A and 20A models. They are ideal for porch and landscape lights, interior lights, exhaust fans, heat lamps, towel warmers, pool pumps, hot tubs, saunas, and more.

DT1xx 15 Amp Models

- Available in six options: 15-, 30-, 60-minute and 2-, 4-, 12-hour
- Single pole only
- Flexible wiring can be connected to Neutral wire if present in the wallbox, or Earth ground if no Neutral wire is present
- Interchangeable line and load wires

DT2xx 20 Amp Models

- Available in five options: 30-, 60-minute and 2-, 4-, 12-hour
- Single pole or multi-way when used with a DDOSR Switch Companion, or can be used in 3-way with an additional DT2xx Timer
- Neutral wire required for installation
- Supports larger loads



TOP Sellers

DOS02-LW

Decora® Occupancy Motion Sensor Light Switch



DOS15-1LZ

Decora® Occupancy Motion Sensor Light Switch



VPT24-1PZ

Decora® 24-Hour Programmable Timer Switch



6674-10W

SureSlide® LED Dimmer



DSL06-1LZ

Decora® Slide LED Dimmer



IP710-DLZ

IlumaTech® 0-10V Dimmer



IP710-D0Z

IlumaTech® 0-10V Dimmer



Lighting Controls Growth Products

Description	Color	Cat. No.
Decora® Occupancy Motion Sensor Light Switch, 180° PIR manual-on, automatic-off, single pole, 150W LED/CFL, 250VA Incandescent/Halogen, 200VA Magnetic Low Voltage, 250VA Electronic Low Voltage, 2A Resistive, 1/4 HP Motor	White	DOS02-LW
Decora® Occupancy Motion Sensor Switch, 180° PIR manual-on, automatic-off, single pole, multi-way or multi-sensor, 600W LED/CFL, 1800W Incandescent/Halogen, 1200VA ELV/MLV/Florescent, 1/2 HP Motor, 15A Resistive	White, Ivory & Light Almond	DOS15-1LZ
Decora® In-Wall 24-Hour Programmable Timer Switch, 1800W Incandescent/Halogen, 15A Resistive/Inductive, 1HP, for single pole, 3-way or more locations when used with VP0SR Switch Companion	White	VPT24-1PZ
SureSlide® Dimmer, 150W LED/CFL, 600W Incandescent/Halogen, 60Hz, single pole or 3-way control when used with 3-way switch		6674-10W
Decora® Slide Dimmer, 300W LED/CFL, 600W Incandescent/Halogen, single pole or 3-way control when used with 3-way switch		DSL06-1LZ
IlumaTech® 0-10V Dimmer for use with LED or Fluorescent Ballasts and Power Supplies, suitable for use with Class 1 or Class 2 wiring, 1200VA @ 120VAC, 1500VA @ 277VAC, 10A LED/Electronic Ballast 120/277VAC, 60Hz, 50mAmps maximum sinking current, with LED locator, single pole or 3-way control when used with 3-way switch		IP710-DLZ
IlumaTech® 0-10V Dimmer for use with LED or Fluorescent Ballasts and Power Supplies, suitable for use with Class 1 or Class 2 wiring, 1200VA @ 120VAC, 1500VA @ 277VAC, 10A LED/Electronic Ballast 120/277VAC, 60Hz, 50mAmps maximum sinking current		IP710-D0Z

Please visit leviton.com/homelec for complete ordering information, or contact your Leviton representative.

USB IN-WALL CHARGERS

Keeping your smartphones, tablets and other electronic devices up and running is essential to staying connected to family, friends and business. Choose Leviton USB In-Wall Chargers for fast, efficient charging. With a variety styles and colors to choose from, Leviton USB In-Wall Chargers are ideal for residential and commercial applications including kitchens, bedrooms, home offices, dormitories, lounges, hospitals, restaurants and more.



NEW

NEW HIGH POWER IN-WALL USB CHARGER RECEPTACLES

Leviton's line of Power Delivery (PD) compatible USB chargers are engineered and tested for compatibility with more of the newest devices with built-in PD technology: from phones to tablets, laptops and more! Type-C ports and Power Delivery are featured on the latest devices manufactured by Apple®, Samsung®, Google®, Microsoft® and more, making the technology the new standard. Leviton's USBs with Power Delivery are designed to optimize charging for a faster, more efficient user experience especially for laptops that require the most power.



T5635
30W charge on single port



T5634
50W charge on Type-C Port
10W charge on Type A Port

60W
Charge on Single Port



**TOP
Sellers**

T5633-W

5.1A (25+W) Type A and Type-C USB with Duplex Tamper-Resistant



T5833-W

5.1A (25+W) Type A and Type-C USB with Duplex Tamper-Resistant



T5633-E

5.1A (25+W) Type A and Type-C USB with Duplex Tamper-Resistant



T5635-W

6A (30W) Dual Type-C USB with Power Delivery (PD) with Duplex Tamper-Resistant



GUSB1-W

Combination 4.8A (24W) USB Type A and SmartLockPro® Self-Test GFCI



GUSB2-W

Combination 4.8A (24W) USB Type A and SmartLockPro® Self-Test GFCI



T5637-W

30W (6A) USB Dual Type-C/C Wall Outlet Charger with 15A Tamper-Resistant Outlet



T5833-E

5.1A USB Type A/Type-C Wall Outlet Charger with 20A Tamper-Resistant



T5633-T

5.1A USB Type A/Type-C Wall Outlet Charger with 15A Tamper-Resistant Outlet



T5638-W

18W (3.6A) USB Type A/Type-C Wall Outlet Charger with 15A Tamper-Resistant Outlet



Residential USB Growth Products

Description	Color	Cat. No.
Decora® USB Charger Combination Device, Dual Type A USB In-Wall Charger with Duplex Tamper-Resistant, 15A-125V	White	T5632-W
Decora® USB Charger Combination Device, Dual Type A USB In-Wall Charger with Duplex Tamper-Resistant, 20A-125V		T5832-W
Decora® USB Charger Combination Device, Dual Type A USB In-Wall Charger with Duplex Tamper-Resistant, 15A-125V	Black	T5632-E
Decora® USB Charger Combination Device, Dual Type A USB In-Wall Charger with Duplex Tamper-Resistant, 20A-125V		T5832-E
Decora® USB Charger Combination Device, Type A and Type-C USB In-Wall Charger with Duplex Tamper-Resistant, 15A-125V	White	T5633-W
Decora® USB Charger Combination Device, Type A and Type-C USB In-Wall Charger with Duplex Tamper-Resistant, 20A-125V		T5833-W
Decora® USB Charger Combination Device, Type A and Type-C USB In-Wall Charger with Duplex Tamper-Resistant, 15A-125V	Black	T5633-E
Decora® USB Charger Combination Device, Dual Type-C USB with Power Delivery (PD) In-Wall Charger with Duplex Tamper-Resistant Receptacle, 15A-125V	White	T5635-W
Decora® USB Charger Combination Device, SmartlockPro® Self-Test GFCI Combination USB Type A/C In-Wall Charger, 15A-125V		GUSB1-W
Decora® USB Charger Combination Device, SmartlockPro® Self-Test GFCI Combination USB Type A/C In-Wall Charger, 20A-125V		GUSB2-W

Please visit leviton.com/usb for complete ordering information, or contact your Leviton representative.

Baffle Slim LED Downlight with Selectable CCT

A direct mount downlighting solution that does not require an existing housing or junction box that can be used in retrofit, remodel or new construction applications. Slim design requires only a 2-inch plenum and eliminates the need for a recessed housing. The regressed lens with base provides less glare and improves visual comfort. Field selectable color temperature (CCT) from 2700K, 3000K, 3500K, 4000K and 5000K. IC-Rated die-cast aluminum housing in a matte white painted finish. Available in 4-, 6- and 8-Inch round and 4- and 6-Inch square apertures.



NEW

NEW ADJUSTABLE SLIM LED DOWNLIGHTS

Adjustable Slim Downlights are fully adjustable up to 80° of tilt and 360° of rotation. Slim design requires only a 2-inch plenum and eliminates the need for a recessed housing. Field selectable color temperature (CCT) from 2700K, 3000K, 3500K, 4000K and 5000K. Available in 4-, and 6-inch round apertures.



TOP Sellers

DBR40-001-S1W

Baffle Slim Downlight with Selectable CCT, 4-inch Round Aperture



DBR60-001-S1W

Baffle Slim Downlight with Selectable CCT, 6-inch Round Aperture



DBR80-001-S1W

Baffle Slim Downlight with Selectable CCT, 8-inch Round Aperture



DBS40-001-S1W

Baffle Slim Downlight with Selectable CCT, 4-inch Square Aperture



DBS60-001-S1W

Baffle Slim Downlight with Selectable CCT, 6-inch Square Aperture



DAR40-001-S1W

Adjustable Slim Downlight with Selectable CCT, 4-inch Round Aperture



DAR60-001-S1W

Adjustable Slim Downlight with Selectable CCT, 6-inch Round Aperture



9850-LED

LED Ceiling Keyless Lampholder



9866-80W

8" LED Downlight with Motion Sensor



9852-LED

LED Ceiling Pull-Chain Lampholder



Residential USB Growth Products

Description	Color	Cat. No.
4-Inch Round Aperture Baffle Slim Downlight	White	DBR40-001-S1W
6-Inch Round Aperture Baffle Slim Downlight		DBR60-001-S1W
8-Inch Round Aperture Baffle Slim Downlight		DBR80-001-S1W
4-Inch Square Aperture Baffle Slim Downlight		DBS40-001-S1W
6-Inch Square Aperture Baffle Slim Downlight		DBS60-001-S1W
4-inch Round Aperture Adjustable Slim Downlight		DAR40-001-S1W
6-inch Round Aperture Adjustable Slim Downlight	DAR60-001-S1W	
LED Ceiling Keyless Lampholder 10W-120VAC, 60Hz, Energy Star Qualified		9859-LED
LED Downlight with Motion Sensor, 18W - 120VAC, Energy Star Qualified		9866-80W
LED Ceiling Pull-Chain Lampholder with GU24 LED Lamp and Guard, 10W-120VAC, 60Hz, Energy Star Qualified	—	9852-LED

Please visit leviton.com for complete ordering information, or contact your Leviton representative.

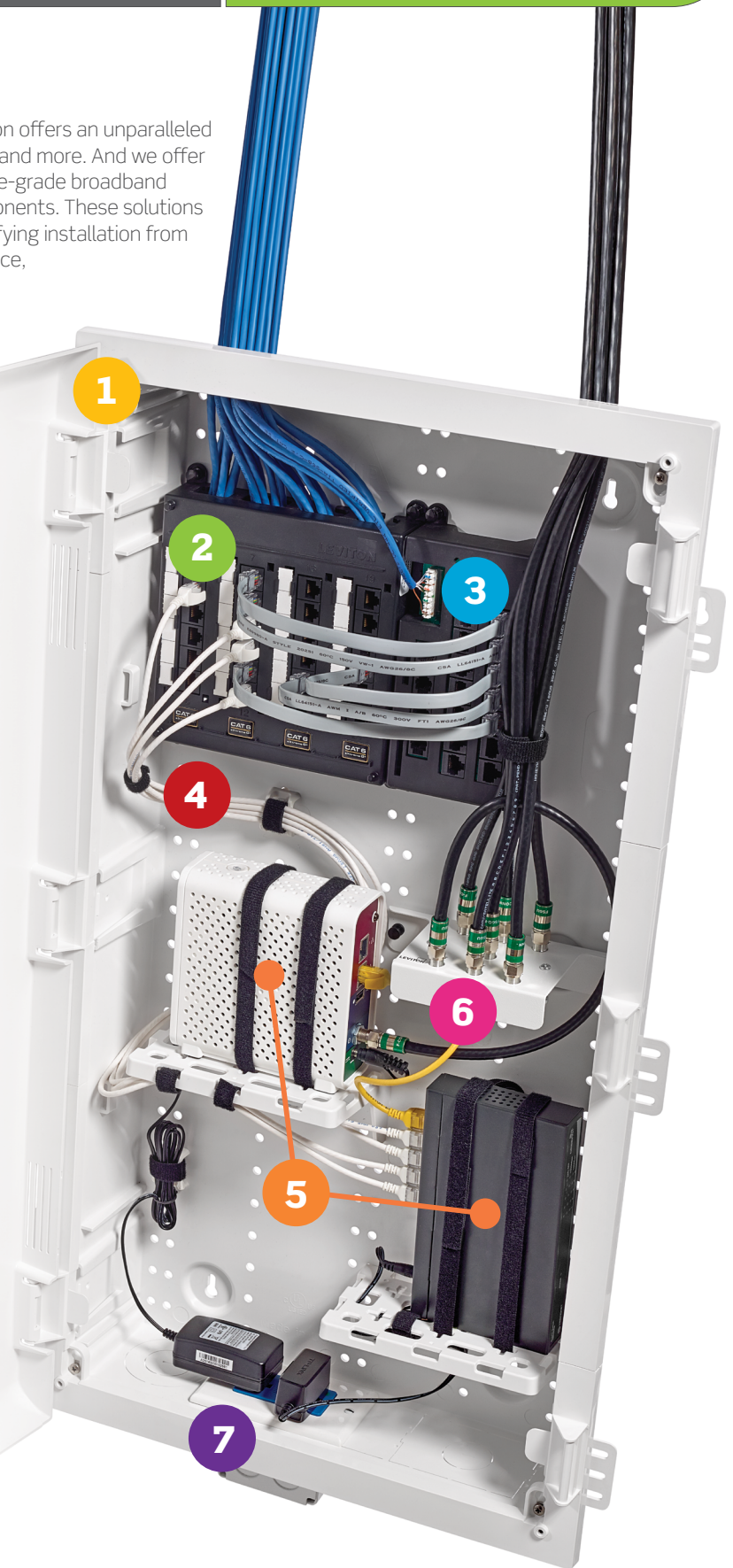
CONNECTED HOME

For every residence — single-family home, high-rise, or hotel — Leviton offers an unparalleled selection of structured wiring solutions for networking, audio, video, and more. And we offer the ideal central distribution point to manage them all. Get enterprise-grade broadband network performance with Leviton Structured Media™ Center components. These solutions create an integrated system, providing an organized base and simplifying installation from rough-in through line activation. For enclosure configuration assistance, go to leviton.com/homeconfig.

STRUCTURED MEDIA™ CENTERS — The Nerve Center of the Connected Home

Populating the Structured Media™ Center

- 1 Structured Media™ Center:** These versatile enclosures allow you to manage and distribute a full range of voice, data networking, audio, and video wiring from one central location. We have enclosures for every construction type: wood, steel frame, concrete, and cinder block construction, and Wireless Structured Media Centers for expanding the reach of a wireless network.
- 2 Data Patching and Distribution:** Leviton offers durable Cat 6 and 5e panels and modules for data cable distribution. The high-end Twist & Mount Panel makes installation simple and provides easy access for moves, additions, or changes in the home network.
- 3 Telephone Patching and Distribution:** Choose from a wide selection of telephone distribution boards, modules, or panels for telephone and security systems. Our Telephone Input Distribution Panel (TIDP) supports inputs for use with triple-play modems and complements the look and simplicity of our Twist & Mount Patch Panels.
- 4 High-Flex Patch Cords:** EXTREME™ High-Flex Cat 6 Patch Cords allow for tighter radius connections and a cleaner finished appearance inside a dressed Structured Media Center.
- 5 User or Service Provider Active Gear:** Leviton offers a range of accessories for mounting and securing active gear, such as shelf brackets, saddle ties and VELCRO® Brand strips. And when used with a plastic Vented Hinged Door, the enclosures have added depth to support bulkier routers and other equipment.
- 6 Premium and Passive CATV Splitters:** Distribute the incoming RF signal to locations throughout a home via coaxial cable using Leviton passive CATV splitters, or use Premium splitters to optimize the performance of digital cable signals to handle HDTV.
- 7 Integrated Power Supply:** Structured cabling systems rely on active gear that requires low-voltage power and surge protection. Leviton offers power supplies with extra plugs that eliminate the need for bulky power adapters within enclosures.



TOP Sellers

47605-140

14" Structured Media Enclosure and Flush Mount Cover, Metal



49605-28P

28" Wireless Structured Media Enclosure with Vented Hinged Door, Plastic



47613-EZC

EZ-RJ45™ Cat 6 Plug



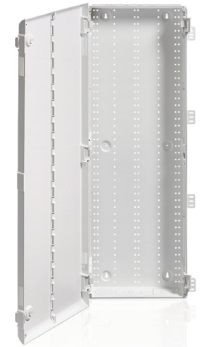
49605-28G

28" Wireless Structured Media Enclosure, Plastic



49605-42P

42" Wireless Structured Media Enclosure, Plastic



47605-28W

28" Structured Media Enclosure and Flush-Mount Cover, Metal



49605-28W

28" Wireless Structured Media Enclosure with Vented Cover, Plastic



49605-42G

42" Wireless Structured Media Enclosure, Plastic



49605-42B

42" Vented Hinged Door, Plastic



Bulk Pack
6

49605-140

14" Wireless Structured Media Enclosure with Vented Cover, Plastic



Connected Home Growth Products

Description	Color	Cat. No.
14" Enclosure and Flush-Mount Cover, 15.32" (389.1 mm) H x 15.62" (396.7 mm) W x 3.83" (97.3 mm) D	White	47605-140
28" Plastic Series Wireless Structured Media™ Center (28" x 14.26" x 3.42") with Vented Hinged Door		49605-28P
EZ-RJ45 Cat 5e Plug, 50/pack	—	47613-EZC
28" Enclosure, job packed, 3 per pack, 28.0" (711.2 mm) H x 14.38" (365.3 mm) W x 3.63" (92.2 mm) D	White	49605-28G
42" Plastic Series Wireless Structured Media™ Center (42" x 14.26" x 3.42") with Vented Hinged Door		49605-42P
28" Enclosure and Flush-Mount Cover, 29.32" (744.7 mm) H x 15.62" (396.7 mm) W x 3.83" (97.3 mm) D		47605-28W
28" Plastic Series Wireless Structured Media™ Center (28" x 14.26" x 3.42") with Vented Cover		49605-28W
42" Plastic Series Wireless Structured Media™ Center Enclosure, Bulk Pack of 6 (42" x 14.26" x 3.42")		49605-42G
42" Plastic Series Wireless Structured Media™ Center (42" x 14.26" x 3.42") Vented Hinged Door, Bulk Pack of 6		49605-42B
14" Plastic Series Wireless Structured Media™ Center Enclosure with Vented Cover (14" x 14.26" x 3.42")		49605-140

Please visit leviton.com/connectedhome for complete ordering information, or contact your Leviton representative.

VERIFEYE™ SUBMETERING SOLUTIONS

VerifEye™ delivers a comprehensive line of leading-edge submeters, communication products, and software solutions to help commercial, residential, and industrial facilities manage costs and conserve energy. The cost-effective scalability and integration provide timely solutions that can be expanded for future needs. Submetering expertise, service and support from start to finish from a name you can trust.

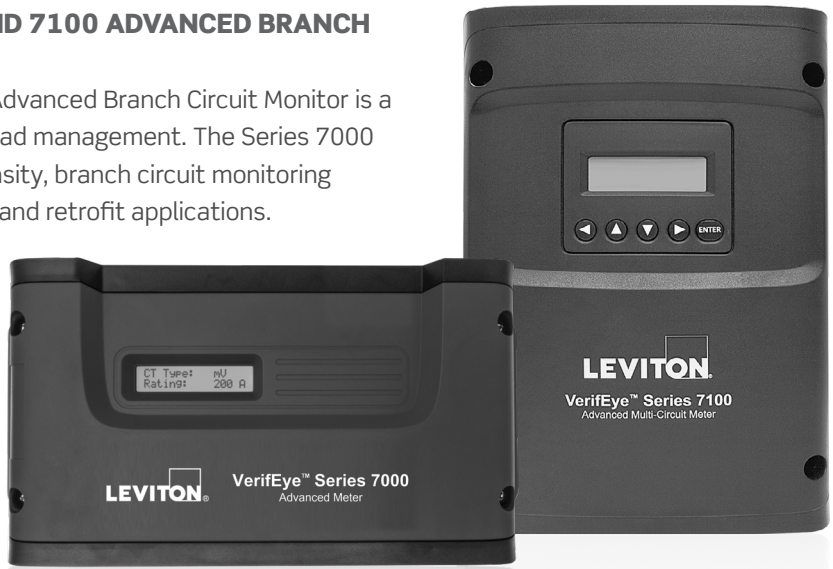


NEW

NEW VERIFEYE® SERIES 7000 AND 7100 ADVANCED BRANCH CIRCUIT MONITOR

The VerifEye™ Series 7000 and 7100 Advanced Branch Circuit Monitor is a cost-effective solution for electrical load management. The Series 7000 and 7100 platform is ideal for high density, branch circuit monitoring applications in both new construction and retrofit applications.

The Series 7000 and 7100 monitors up to 48 branch circuits with one single meter board.



NEW BUILDING MANAGER ONLINE (BMO)

Step into the future of submetering with the latest in web-based software. The VerifEye™ Building Manager Online (BMO) platform offers tools for automated energy information that can be summarized to identify consumption and demand patterns in defined time intervals. A wealth of information in multiple reports and additional graphical formats is available. The software also enables users to set email alerts for the most critical data.

TOP
Sellers**71D48**Submeter, Embedded
Branch Circuit Monitor**73D48**Submeter, Embedded
Branch Circuit Monitor**2K208-2D**Submeter, Indoor, 208V,
3 Phase 4 Wire**2K480-2D**Submeter, Indoor, 480V,
3 Phase 4 Wire**1K240-1W**Submeter, Indoor,
120/240V, 1 Phase 3 Wire**2K208-1D**Submeter, Indoor, 208V,
3 Phase 4 Wire**MK240-2SW**Submeter, Mini Meter,
Indoor, Flush Mount**6X312-CFG**Submeter, Indoor/Outdoor,
120/208/240V**6X315-CFG**Submeter, Indoor/Outdoor,
120/208/240V**4OUMR-R18**Submeter, Outdoor,
Universal Voltage,
3 Phase 3 Wire/4 Wire**Meter Growth Products**

Description	Cat. No.
VeriEye™ Series 7100 Dual Voltage, Branch Circuit Monitor, 48 inputs, LCD display, NEMA 1 enclosure	71D48
VeriEye™ Series 7300 Branch Circuit Monitor, 48 inputs, LCD display, NEMA 1 enclosure	73D48
VeriEye™ Series 2000 3-Phase Meter Kit — Indoor Enclosure, 120/208V 3PH 4W WYE Demand Meter, 3 Split CTs	2K208-2D
VeriEye™ Series 2000 3-Phase Meter Kit — Indoor, 277/480V 3PH W4 WYE Demand Meter, 3 Split CTs	2K480-2D
VeriEye™ Series 1000 Single Phase Meter Kit — Indoor, 120/208V 1PH 3W or 120/240V 1PH 3W (Split Phase), 2 Split CTs	1K240-1W
VeriEye™ Series 2000 3-Phase Meter Kit — Indoor, 120/208V 3PH 4W WYE Demand Meter, 3 Split CTs	2K208-1D
VeriEye™ Mini Meter Kit — Indoor Flush Mount Enclosure, 120/208V 3W or, 120/240V 1PH 3W (Split Phase), 2 Solid CTs	MK240-2SW
VeriEye™ Extra-Large Mini Meter MMU — NEMA 4X Enclosure, 12 Dual Element Meters	6X312-CFG
VeriEye™ Extra-Large Mini Meter MMU — NEMA 4X Enclosure, 15 Dual Element Meters	6X315-CFG
VeriEye™ Series 4000 Outdoor NEMA Enclosure, Universal 3PH 3W/4W, 3, 18" Rogowski Coil CTs	4OUMR-R18

Please visit leviton.com/verifeye for complete ordering information, or contact your Leviton representative.

OCCUPANCY AND VACANCY SENSORS

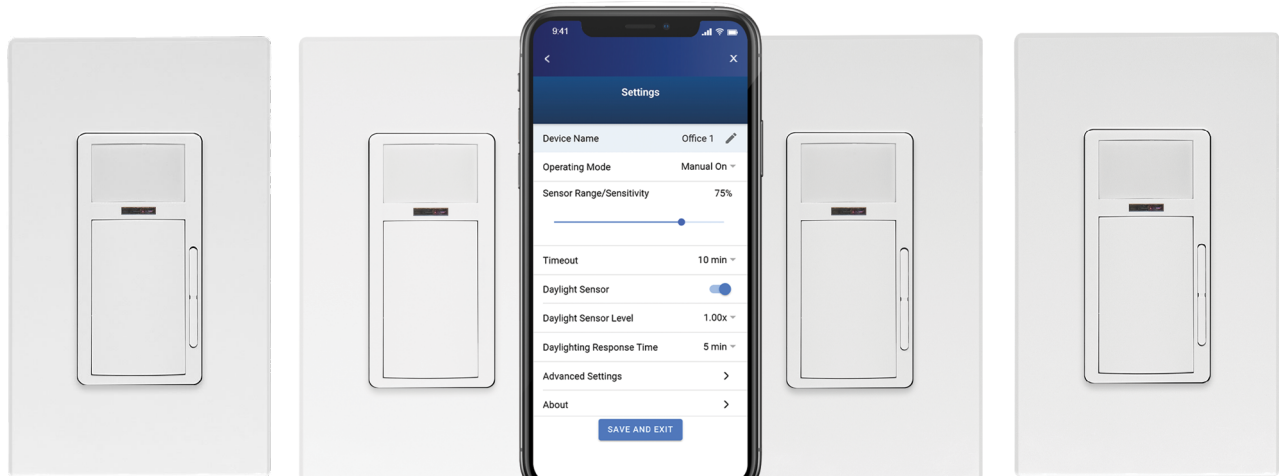
Leviton offers a wide selection of occupancy and vacancy sensors for commercial applications. From wall and ceiling mounted to wall switch and wireless, with passive infrared, ultrasonic or multi-technology sensing; Leviton sensors provide smart energy saving solutions for both indoor and outdoor use.



NEW

NEW SMART MULTI-TECH WALLBOX SENSORS

The new Smart Multi-Tech Wallbox Sensors use Passive Infrared (PIR) detection and Microphonics technology to monitor a room for occupancy. When the PIR sensor detects motion and switches the lights ON, lights will remain ON as long as motion is detected and will turn off when space becomes vacant after the timeout expires. The Microphonic technology “listens” for human activity in the space and will keep the lights ON when motion is detected. Microphonics does not require a direct line of sight and can pick up human activity behind obstructions that PIR-only devices are unable to detect. Configuration of the Smart Multi-Tech Sensors is made using the Leviton Smart Sensor App from a smartphone or other Bluetooth®-enabled Android or iOS device. Simple configuration can also be applied using pushbutton setup for several popular pre-configured options.



ODP10-M1W
Smart Multi-Tech 1000W
Dimming Wallbox Sensor

ODSMT-MDW
Smart Multi-Tech
Wallbox Sensor

ODDMT-MLW
Smart Multi-Tech 24V
Dimming Wallbox Sensor

ODDMT-MDW
Smart Multi-Tech 0-10V
Dimming Wallbox Sensor

TOP Sellers

ODS10-IDW

Occupancy Sensor, PIR, Wall Switch, 2100SF, 120-277V, White, Decora®



OSSMT-MDW

Occupancy Sensor, Multi-Technology (PIR Sensor / Ultrasonic Sensor)



OSSMT-GDW

Occupancy Sensor, Multi-Technology (PIR Sensor / Ultrasonic Sensor)



OSC20-M0W

Occupancy Sensor, Multi-Technology (PIR/US)



OSC10-M0W

Occupancy Sensor, Multi-Technology (PIR/US)



OSC20-MWW

Occupancy Sensor, Multi-Technology (PIR/US)



ODC05-I1W

Occupancy Sensor & Switching Relay



OSFHU-ITW

Occupancy Sensor, Fixture Mount, PIR, High Bay



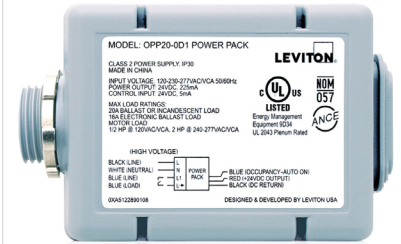
ODD10-IDW

Smart Sensor, PIR, Antimicrobial



OPP20-D2

Occupancy Sensor Power Pack



Controls Distribution Core Products

Description	Color	Cat. No.
Decora® Commercial Wall Switch Infrared Occupancy Sensor	White	ODS10-IDW
Decora® Commercial Grade Wall Switch Multi-Technology Occupancy Sensor with Self-Adaptive Technology		OSSMT-MDW
Decora® Commercial Grade Wall Switch Multi-Technology Occupancy Sensor		OSSMT-GDW
Low Voltage Ceiling Mount Multi-Technology Occupancy Sensor		OSC20-M0W
		OSC10-M0W
		OSC20-MWW
Line Voltage Self-Contained Infrared Ceiling Mount Occupancy Sensor, and Switching Relay, 120V		ODC05-I1W
Self-Contained Infrared High Bay Occupancy Sensor, Fixture Mount High-Bay PIR Occupancy, Sensor with Two Interchangeable Lenses, for 360° High-Bay and 360° Low-Bay		OSFHU-ITW
Smart Wallbox Sensor, PIR 0-10V Dimming Wallbox Sensor		ODD10-IDW
Commercial Grade Occupancy Sensor Power Pack, Super Duty Power Pack with Auto-ON, Manual-ON, and Local Switch Inputs	—	OPP20-D2

Please visit leviton.com for complete ordering information, or contact your Leviton representative.

EV CHARGING SOLUTIONS

Smart Residential, Commercial, and Public Charging

EV CHARGING COMPATIBLE WITH THE MY LEVITON APP

Users can now take control of the entire home, including smart electric vehicle charging, lighting, and load center.

- Schedule charging sessions
- Remotely start/stop charging
- View charging status
- Receive fault notifications

SMART COMMERCIAL AND FLEET CHARGING

- Multi-site, multi-station management in a single dashboard
- Real-time analytics and data
- Create multiple user groups for access control
- Control pricing according to user group access
- In-app and RFID access, including RFID access with existing badges, room keys, etc.
- Advanced load management for lower costs while maintaining station volume
- Fleet telematics integration capabilities

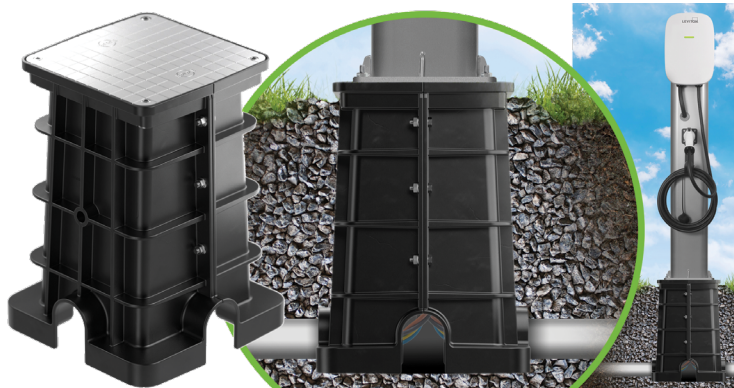


NEW

NEW EV CHARGING PEDESTAL FOUNDATION

This new addition to the Leviton EV Charging portfolio enables faster, easier installations and helps support EV-ready infrastructure.

- Foundation is a direct-bury option that eliminates the need to wait for concrete to cure before installing the EV charger, condensing project timelines



NEW HIGH PERFORMANCE 50 AMP HEAVY DUTY FLUSH MOUNT RECEPTACLES

The perfect option for homeowners who prefer a plug-in EV charging application to a hardwired application, and for future-focused new construction MDU projects that want to present an EV-ready environment.

- Built to outperform and outlast competitor receptacles
- Built of durable high-impact Nylon
- Pressure-wire terminal connections ensure full-contact with the conductors

**TOP
Sellers**

EV SERIES STANDARD

40A Level 2 Electric Vehicle Charging Station, Plug-In



EV SERIES STANDARD

32A Level 2 Electric Vehicle Charging Station



EV SERIES STANDARD

48A Level 2 Electric Vehicle Charging Station



EV SERIES SMART HOME

32A Level 2 Electric Vehicle Charging Station



EPED2
EV Series Electric Vehicle Charging Station Pedestal Dual Mount, Front/Back



EV SERIES PRO

48A Level 2 Electric Vehicle Charging Station (Standard Face)



EV SERIES PRO

80A Level 2 Electric Vehicle Charging Station (Featuring LED Status Screen)



EV CHARGING RECEPTACLE

50A, Heavy Duty



EV CHARGING RECEPTACLE

50A, Heavy Duty, Weather-Resistant



EVSE Growth Products

Description	Cat. No.
EV Series Standard Level 2 Charging Station, 40 Amp (9.6kW) Plug-In	EV40P
EV Series Standard Level 2 Charging Station, 32 Amp (7.6kW), Hardwire	EV320
EV Series Standard Level 2 Charging Station, 48 Amp (11.6kW), Hardwire	EV480
EV Series Smart Home (My Leviton Compatibility) Level 2 Charging Station, 32 Amp (7.6kW), Hardwire	EV32W
EV Series Pro (Standard Face) Level 2 Charging Station, 48 Amp (11.6kW), Hardwire	EV48G
EV Series Pro (Featuring LED Status Screen) Level 2 Charging Station, 80 Amp (19.2kW), Hardwire	EV80S
EV Series Electric Vehicle Charging Station Pedestal, Dual Mount Pedestal, Front/Back, Hardwire	EPED-2
50 Amp EV Charging Receptacle/Outlet, Heavy Duty	1450R
50 Amp EV Charging Receptacle/Outlet, Heavy Duty, Weather-Resistant	1450W

Please visit leviton.com/evcharging for complete ordering information, or contact your Leviton representative.

SURGE PROTECTIVE DEVICES (SPDs)

There are different types of surge protective devices, categorized based on the service area they protect and where they are installed. It's important to understand how they can be layered to ensure complete surge protection.

TYPE 1

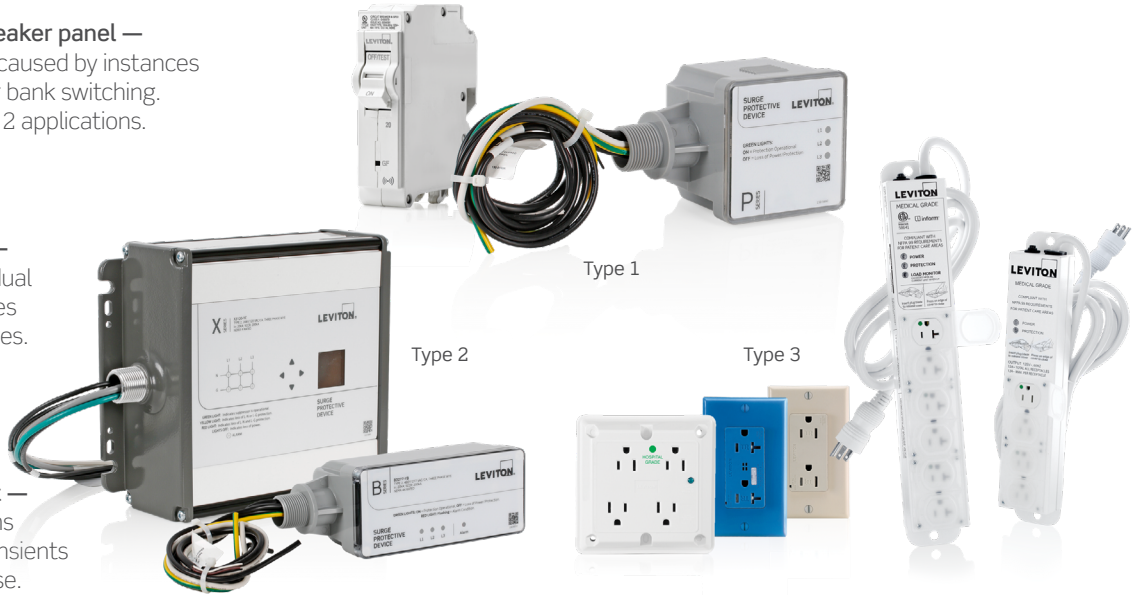
Installed before or at the main breaker panel —
Protecting against external surges caused by instances such as lightning or utility capacitor bank switching. Type 1 devices can be used in Type 2 applications.

TYPE 2

Providing the same protection as Type 1 but mounted to the load side of an electric service panel —
These devices protect against residual lightning energy, motor driven surges and other internally generated surges. Type 2 devices can be tiered on branch circuits for additional protection.

TYPE 3

Used at the protected equipment —
Such as computers, gaming systems and TVs, shielding from harmful transients and acting as the last line of defense.



NEW

NEW SURGE PROTECTIVE PANELS

Leviton's latest surge protective devices include Type 1 and Type 2 panels for residential, commercial, and industrial applications. These new panels feature improved surge performance ratings, improved enclosure ratings, and are compliant with the latest 2023 NEC and UL 1449 5th edition requirements. The R, P, B, M, and X Series panels feature NEMA 4 or 4X outdoor ratings and offer a range of options from easily installed

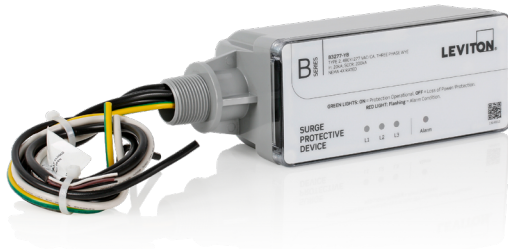
panels for residential use, to cutting-edge panels featuring LCD screens and advanced surge counting and performance monitoring for industrial use.



**TOP
Sellers**

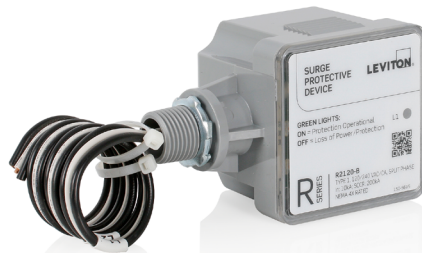
B3120-YB

Type 2 Surge Protective Device, 208Y/120 VAC, Three Phase WYE



R2120-B

Type 1 Surge Protective Device, 120/240 VAC, Split Phase



M3277-YB

Type 2 Surge Protective Device, 480Y/277 VAC, Three Phase WYE



M3240-DB

Type 2 Surge Protective Device, 240 VAC, Three Phase Delta

53C4M-1S5

15A Medical Grade Power Strip with Load Monitoring Inform™ Technology and Surge Protection



53C6M-1S7

15A Medical Grade Power Strip with Load Monitoring Inform™ Technology and Surge Protection



5306M-2N7

20A Medical Grade Power Strip, **Non-Surge**



5306M-1S7

20A Medical Grade Power Strip with Surge Protection



53C6M-2N5

20A Medical Grade Power Strip with Load Monitoring Inform™ Technology, **Non-Surge**



Surge Protective Devices (SPDs) Growth Products

Description	Cat. No.
Type 2 Surge Protective Panel, B Series, 208Y/120 VAC/CA, Three Phase WYE, 150V/300V*	B3120-YB
Type 1 Surge Protective Panel, R Series, 120/240 VAC/CA, Split Phase, 180V/360V*	R2120-B
Type 2 Surge Protective Panel, M Series, 480Y/277 VAC/CA, Three Phase WYE, 350V	M3277-YB
Type 2 Surge Protective Panel, M Series, 240 VAC/CA, Three Phase Delta, 275V	M3240-DB
Type 3 Surge Medical Grade Power Strip with Load Monitoring Inform™ Technology, 15A, 15 Foot Power Cord, 4 Outlet	53C4M-1S5
Type 3 Surge Medical Grade Power Strip with Load Monitoring Inform™ Technology, 15A, 7 Foot Power Cord, 6 Outlet	53C6M-1S7
Type 3 Medical Grade Power Strip, 20 Amp, 7-Foot Power Cord, 6 Outlet, Non-Surge	5306M-2N7
Type 3 Surge Medical Grade Power Strip, 15A, 7 Foot Power Cord, 6 Outlet	5306M-1S7
Type 3 Medical Grade Power Strip with Load Monitoring Inform™ Technology, 20 Amp, Non-Surge , 15 Foot Power Cord, 6 Outlet	53C6M-2N5

*Second voltage refers to L-L rating

Please visit leviton.com/surge for complete ordering information, or contact your Leviton representative.

POWER PEDESTALS

Leviton's latest portfolio of power pedestals are designed to safely bring power to new and previously unreachable locations. Applications include commercial spaces, RV parks, campsites, and marinas.

POWER PEDESTALS FOR COMMERCIAL SPACES

- For indoor and outdoor use
- Quick and easy installation
- Available in a variety of heights, colors and configurations

PEDESTALS FOR RV, CAMPSITES & MARINE APPLICATIONS

- Feature metering, LED lighting and water valve hookups- all in one solution
- Customizable to customers' unique specifications
- Designed to withstand harsh weather and high-abuse environments



NEW

NEW POWER PEDESTALS FOR MARINE USE

DOCKSIDER — DS1 LARGE POWER PEDESTAL

- Polycarbonate housing with two piece system to allow disassembly of pedestal in harsh weather conditions
- Preassembled with straight distribution block, wiring devices and cover plates and LED base lights
- Allows up to 6 wiring devices

DOCKHEAD — DH2 LARGE POWER OUTLET BOX

10" X 12" Power Outlet Box for Marine

- Polycarbonate housing
- Preassembled with mini straight distribution block, wiring devices and front and bottom LED lights
- Allows up to 4 wiring devices
- Can be ordered with or without stand

DOCKHEAD — DH1 SMALL POWER OUTLET BOX

8" X 10" Power Outlet Box for Marine

- Polycarbonate housing
- Preassembled with mini straight distribution block, wiring devices with weather-resistant covers, and front and bottom LED lights
- Allows up to 2 wiring devices
- Can be ordered with or without stand

CUSTOM CONFIGURED

To order visit:

www.leviton.com/powerpedestals
to download the custom order form.



Docksider

Dockhead

**TOP
Sellers**

1BH42-1S

Power Pedestal Kit,
Standard Hinge, Direct Bury



2PH18-2S

Power Pedestal Kit,
Standard Hinge, Surface Mount



1PF18-1S

Power Pedestal Kit,
Flush Hinge, Surface Mount



1PS18-3S

Power Pedestal Kit,
No Hinge, Surface Mount



Representative images shown below. Devices will vary based on options selected.

RVCS1-S

Campsider,
Straight Distribution
Bus Bar

RVCSM-1S

Campsider,
Straight Distribution Bus Bar,
Water Hookup, Metering

RVCHM-L

Camphead,
Single Phase Loop Distribution
Bus Bar, Metering



Hinged and Non-Hinged Pedestals, Heads and Stands

Description	Cat. No.
Standard Hinge, 1-Gang, Direct Bury, 18" once installed; 42" total, Stainless Steel	1BH42-1S
Standard Hinge, 2-Gang, Surface Mount, 18", Stainless Steel	2PH18-2S
Flush Hinge, 1-Gang, Surface Mount, 18", Stainless Steel	1PF18-1S
No Hinge, 1-Gang, Surface Mount, 18", Stainless Steel	1PS18-3S
Campsider, Straight Distribution Block Bus Bar, No Meter, No Water Hookup	RVCS1-S
Campsider, Straight Distribution Block Bus Bar, Dual Element Meter, Two 1/2" - 1/4 Turn Water Valves	RVCSM-1S
Camphead, Single Phase Loop Distribution Block Bus Bar, Dual Element Meter	RVCHM-L

Please visit leviton.com/powerpedestals for complete ordering information, or contact your Leviton representative.

TOP
Sellers

TEMPORARY POWER

Leviton has a wide range of temporary power solutions to provide the power, where and when its needed. Our devices are built to deliver safe and reliable power in hazardous environments, keeping reliable connections and preventing unplanned downtime.

16S31-UCL

Male/Female Receptacle Enclosure for use with 16 series Panel Mount Receptacles

**16D24-UE**

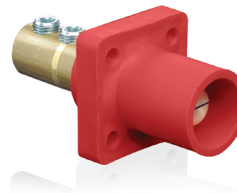
Male Plug, 2/0 - 4/0 AWG, Double Set Screw Termination

**16D33-UE**

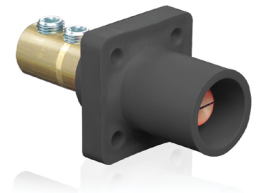
Female Plug, 2/0 - 4/0 AWG, Double Set Screw Termination

**16R21-UR**

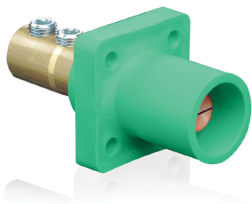
Male Receptacle, 90-Degree, 2/0 - 4/0 AWG, Double Set Screw Termination

**16R21-UE**

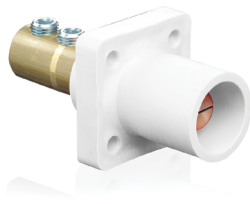
Male Receptacle, 90-Degree, 2/0 - 4/0 AWG, Double Set Screw Termination

**16R21-UG**

Male Receptacle, 90-Degree, 2/0 - 4/0 AWG, Double Set Screw Termination

**16R21-UW**

Male Receptacle, 90-Degree, 2/0 - 4/0 AWG, Double Set Screw Termination

**49MR2-XE**

Male Receptacle, 313-777 MCM, Double Hole Bus Bar

**22L23-SE**

Male Plug, 500-750 MCM, Crimp Tube Termination

**22L26-SE**

Female Plug, 500-750 MCM, Crimp Tube Termination



Temporary Power Growth Products

Description	Color	Cat. No.
16 Series — Cover. For use with 16 Series Panel Mount Receptacles	Clear	16S31-UCL
16 Series, Taper Nose — Male Cam-Type Plug, Double Set Screw Termination, Cable Size: 2/0 - 4/0, Max Ampacity: 400A, Voltage: 600VAC/DC	Black	16D24-UE
16 Series, Taper Nose — Female Cam-Type Plug, Double Set Screw Termination, Cable Size: 2/0 - 4/0, Max Ampacity: 400A, Voltage: 600 VAC/DC, UL/CSA 1691 Listed		16D33-UE
16 Series, Taper Nose — Male Cam-Type Plug, Double Set Screw Termination, Cable Size: 2/0 - 4/0, Max Ampacity: 400A, Voltage: 600VAC/DC	Red	16R21-UR
	Black	16R21-UE
	Green	16R21-UG
	White	16R21-UW
49 Series — Complete Male Panel Mount Receptacle, Receptacle Spacing: 1/4" Horizontally and, 3-1/4" Vertically, Cable Size: 313-777MCM, Max Ampacity: 1135A, Voltage: 1000V	Black	49MR2-XE
23 Series, Latching Taper Nose — Male Cam-Type Plug, Crimp Tube Termination, Cable Size: 500-750MCM, Max Ampacity: 690A, Voltage: 600V		22L23-SE
23 Series, Latching Taper Nose — Female Cam-Type Plug, Crimp Tube Termination, Cable Size: 500-750MCM, Max Ampacity: 690A, Voltage: 600V		22L26-SE

Please visit leviton.com/temporarypower for complete ordering information, or contact your Leviton representative.

**TOP
Sellers**

INDUSTRIAL GRADE WIRING DEVICES

Our industrial wiring devices are constructed for the most extreme environments, designed to ensure safe and reliable electrical performance that will decrease downtime and provide protection from harsh conditions while keeping safety top of mind.

5266-C

Black & White®
Straight Blade Plug,
15A, 125V



CS6364C

Black & White®
50A, 125/25 V,
Black & White®
Locking Connector



5269-C

Black & White®
Straight Blade Connector,
15A, 125V



CS6365C

Black & White®
50A, 125/250V,
Locking Plug



2310

Black & White®
20A, 125V, Flush Mount
Locking Receptacle



4760

Black & White®
15A, 277V, Single
Locking Receptacle



2620

Black & White®
30A, 250V, Flush Mount
Locking Receptacle



LDS30-AX

Powerswitch® 30/32A
Non-Fused Disconnect Switch



MS303-DS

Powerswitch®
Manual Motor Controller



MS302-DS

Powerswitch®
Manual Motor Controller



Industrial Growth Products

Description	Color	Cat. No.
black & white® Industrial Grade Plug, 15A 2-Pole, 3-Wire, Grounding, Plug	Black & White	5266-C
black & white® California Style CS Locking Device, Non-NEMA, 50A-125/250V, Locking Plug		CS6365C
black & white® Industrial Grade Plug, 15A 2-Pole, 3-Wire, Grounding, Connector		5269-C
black & white® California Style CS Locking Device, Non-NEMA 50A-125/250V, Locking Connector		CS6364C
black & white® Locking Device, 20A-125V, 250V, V-0-MAX® Single Flush Receptacle, Connector		2310
black & white® Locking Device, 15A-125V, 277VAC, Single Flush Receptacle, Connector		4760
black & white® Locking Device, 30A-250V, 2-Pole, 3-Wire Grounding, V-0-MAX® Single Flush Receptacle	Black	2620
Powerswitch® Non-Metallic Disconnect Switch, Non-Fused, 30A	—	LDS30-AX
Powerswitch® Manual Motor Controller, Component Switch, Suitable as Motor Disconnect, 30A, 3-Pole	Black	MS303-DS
Powerswitch® Manual Motor Controller, Component Switch, Suitable as Motor Disconnect, 30A, 2-Pole		MS302-DS

Please visit leviton.com/industrial for complete ordering information, or contact your Leviton representative.

GFCI'S & AFCI'S

GFCI DEVICES

All Leviton GFCI receptacles and circuit breakers are engineered to help protect people from the hazards of electric shock and electrocution by interrupting power if a ground-fault is detected. Our extensive line of SmartlockPro® Self-Test GFCI Receptacles includes: Standard, Weather-Resistant, Combination GFCI/USB, Combination GFCI/Switch, Guide Light, Audible Alert, Smart GFCI, Dual Function AFCI/GFCI and Blank Face.

AFCI DEVICES

SmartlockPro® Outlet Branch Circuit (OBC) AFCI Devices offer advanced technology to help protect against electrical fires. These devices are designed to interrupt power in the event potentially hazardous arcing is detected, which could originate from a number of sources including damaged wires and cords.



NEW

NEW WI-FI SMART GFCI OUTLET

Leviton's Wi-Fi Certified Smart GFCI Outlet provides peace of mind by sending notifications via the My Leviton app, directly to your smart phone when a GFCI trips due to a ground-fault.

- An upgrade to Leviton's GFCI Outlet with Audible Trip Alert, allowing you to receive notifications and alerts wherever you are via the My Leviton App
- Ideal for refrigerators, sump pumps and other appliances in out-of-the-way locations such as a garage or basement and other remote locations where daily visual checks are unlikely
- Includes an optional audible alarm that can be enabled or silenced.
- Provides continuous ground-fault protection and meets the latest UL requirements
- Patented Reset Lockout feature prevents reset if the GFCI is not wired or operating correctly



Works with My Leviton



TOP Sellers



GFTTR1-W
15A, 125V
Receptacle/Outlet,
20A Feed-Through,
Tamper-Resistant,
SmartlockPro® GFCI,
White



GFWT1-W
15A, 125V
Receptacle/Outlet,
20A Feed-Through,
SmartlockPro® Slim Weather &
Tamper-Resistant
GFCI, White



GFTTR2-W
20A, 125V
Receptacle/Outlet,
20A Feed-Through,
Tamper-Resistant,
SmartlockPro® Slim GFCI,
White



GFWT2-W
20A, 125V
Receptacle/Outlet,
20 Amp Feed-Through,
SmartlockPro® Slim
Weather & Tamper-Resistant
GFCI, White

GFNT1-W
15A, 125V
Receptacle/Outlet,
20A Feed-Through,
SmartlockPro®
Slim GFCI,
White



AGTR1-W
15A, 125V
Dual Function
AFCI/GFCI Receptacle,
20A Feed-Through,
Tamper-Resistant,
White



GFWR2-W
20A, 125V
Receptacle/Outlet,
20A Feed-Through,
SmartlockPro® Slim
Weather-Resistant GFCI,
White



GFNT2-I
20A, 125V
Receptacle/Outlet,
20A Feed-Through,
SmartlockPro®
Slim GFCI,
Ivory



GFNT1-E
15A, 125V
Receptacle/Outlet,
20A Feed-Through,
SmartlockPro®
Slim GFCI,
Black



GFCI/AFCI Products

Description	Color	Cat. No.
Duplex GFCI with LED Indicator Light (with self-grounding clip), 15A-125V @ Receptacle 20A-125V Feed-Through, TR	White	GFTTR1-W
Duplex Weather-Resistant/Outdoor Grade GFCI with LED Indicator Light, 15A-125V @ Receptacle 20A-125V Feed-Through, TR		GFWT1-W
Duplex GFCI with LED Indicator Light (with self-grounding clip), 20A-125V @ Receptacle 20A-125V Feed-Through, TR		GFTTR2-W
Duplex GFCI with LED Indicator Light (with self-grounding clip), 20A-125V @ Receptacle 20A-125V Feed-Through, Non-TR		GFNT2-W
Duplex Weather-Resistant/Outdoor Grade GFCI with LED Indicator Light, 20A-125V @ Receptacle 20A-125V Feed-Through, TR		GFWT2-W
Duplex GFCI with LED Indicator Light (with self-grounding clip), 15A-125V @ Receptacle 20A-125V Feed-Through, Non-TR		GFNT1-W
Tamper-Resistant Dual Function AFCI/GFCI Receptacle with LED Indicator Light, 15A-125V @ Receptacle 20A-125V Feed-Through		AGTR1-W
Duplex Weather-Resistant/Outdoor Grade GFCI with LED Indicator Light, 20A-125V @ Receptacle 20A-125V Feed-Through, Non-TR		GFWR2-W
Duplex GFCI with LED Indicator Light (with self-grounding clip), 20A-125V @ Receptacle 20A-125V Feed-Through, Non-TR	Ivory	GFNT2-I
Duplex GFCI with LED Indicator Light (with self-grounding clip), 15A-125V @ Receptacle 20A-125V Feed-Through, TR	Black	GFNT1-E

Please visit leviton.com/gfcis for complete ordering information, or contact your Leviton representative.

DECORA®

Good design stands the test of time and our hallmark Decora® brand is no exception. Decora® has set the industry standard by enhancing home décor with distinctive style and superior performance. From dimmers, switches and outlets to in-wall USB chargers, smart devices and lighting controls, the Decora® collection adds contemporary elegance and a finishing touch to any room in the home.



NEW

NEW Lever EDGE™ — THE FUTURE OF WIRING

Leviton's Lever Edge™ wiring devices provide the classic appearance and superior performance of Decora® devices in a new, easier-to-install, design. The line consists of Single Pole and 3-Way Switches and a Tamper-Resistant 15 Amp Duplex Receptacle. Innovative installation features such as color-coded lever terminals (including the ground terminal) for faster, efficient wiring, a larger strap with a unique tongue and groove alignment feature for quicker trim out on multi-gang installations, and no exposed metal parts for safety, make Lever Edge™ ideal for new home construction and MDU projects as well as retrofit applications.



TOP Sellers



5601-2W

15A, 120/277V, Decora® Rocker Single-Pole AC Quiet Switch, Residential Grade, Grounding



5603-2W

15A, 120/277V, Decora® Rocker 3-Way AC Quiet Switch, Residential Grade, Grounding



5604-2W

15A, 120/277V, Decora® Rocker 4-Way AC Quiet Switch, Residential Grade, Grounding



5325-W

15A, 125V, NEMA 5-15R, 2-Pole, 3-Wire, Duplex Receptacle, Straight Blade, Residential Grade, Grounding, Quickwire & Side Wired



T5325-W

15A, 125V, NEMA: 5-15R, 2-Pole, 3-Wire, Tamper-Resistant, Duplex Receptacle, Straight Blade, Grounding, Quickwire Push-In & Side



T5325-SW

15A, 125V, NEMA 5-15R, 2-Pole, 3-Wire, Tamper-Resistant, Duplex Receptacle, Straight Blade, Self-Grounding, Quickwire & Side Wired



T5825-W

20A-125V NEMA 5-20R Tamper-Resistant, Duplex Receptacle, Residential Grade, Side Wired Only



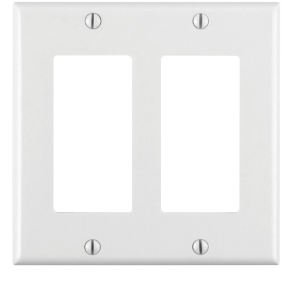
80301-SW

Decora Plus™, 1-Gang, Subplate Included, Polycarbonate, Snap-On Mount Screwless Wallplate



80401-W

1-Gang Decora®/GFCI Device Wallplate/Faceplate, Standard Size, Thermoset



80409-W

2-Gang Decora®/GFCI Device Wallplate/Faceplate, Standard Size, Thermoset

Decora® Core Products

Description	Color	Cat. No.
Residential Grade Decora® Switch, Quickwire and Side Wired Switches*, Single Pole	White	5601-2W
Residential Grade Decora® Switch, Quickwire and Side Wired Switches*, 3-Way		5603-2W
Residential Grade Decora® Switch, Back and Side Wired Switches*, 4-Way		5604-2W
Residential Grade Decora® Receptacle, Quickwire and Side Wired, Duplex		5325-W
Residential Grade Decora® Receptacle, Quickwire and Side Wired, Duplex, Tamper-Resistant		T5325-W
Residential Grade Decora® Receptacle, Quickwire and Side Wired, Duplex, Tamper-Resistant, Self-Grounding*		T5325-SW
Residential Grade Decora® Receptacle, Quickwire and Side Wired, Duplex Tamper-Resistant, Self-Grounding*, No Quickwire		T5825-W
Decora Plus™ Wallplate, Screwless Snap-On (with Subplate), 1-Gang		80301-SW
Decora® Wallplate, Thermoset (Plastic), 1-Gang, Standard		80401-W
Decora® Wallplate, Thermoset (Plastic), 2-Gang, Standard	80409-W	

*Self-grounding when installed in a properly grounded metal box

Please visit leviton.com/decora for complete ordering information, or contact your Leviton representative.

TOP
Sellers

STANDARD DEVICES

AC QUIET TOGGLE SWITCHES

Tried-and-true toggle designs, Leviton residential grade AC Quiet switches cover all the bases; they install easily and are available in standard and illuminated versions.

TRADITIONAL RECEPTACLES

Familiar and functional, Leviton traditional devices and wallplates have stood the test of time. Leviton's comprehensive line of traditional receptacles includes devices rated for all residential applications in a variety of standard configurations and colors.

**T5320-W**

15A, 125V, NEMA 5-15R, 2-Pole, 3-Wire, Tamper-Resistant, Duplex Receptacle, Straight Blade, Grounding, Quickwire & Side Wired

**T5820-W**

20A, 125V, NEMA 5-20R, 2-Pole, 3-Wire, Tamper-Resistant, Duplex Receptacle, Straight Blade, Self Grounding, Side Wired Only

**W5320-T0W**

15A, 125V, NEMA 5-15R, 2-Pole, 3 Wire, Weather and Tamper-Resistant, Straight Blade, Duplex Receptacle, Grounding, Quickwire & Side Wired

**01451-2W**

15A, 120V, Toggle Framed Single-Pole AC Quiet Switch, Residential Grade, Grounding, Quickwire & Side Wired

**1453-2W**

15A, 120V, Toggle Framed 3-Way AC Quiet Switch, Residential Grade, Grounding, Quickwire & Side Wired

**278-S00**

30A, 125/250V, NEMA 14-30R, 3P, 4W, Flush Mtg Receptacle, Straight Blade, Grounding, Side Wired, Steel Strap, Black

**279-S00**

50A, 125/250V, NEMA 14-50R, 3P, 4W, Flush Mtg Receptacle, Straight Blade, Grounding, Side Wired, Steel Strap, Black

88003-W, 80503-W

1-Gang Duplex Device Receptacle Wallplate, Standard and Midway Sizes, Thermoset

**80701-W, PJ1-W**

1-Gang Toggle Switch Wallplate, Standard and Midway Size, Thermoplastic Nylon

**PJ8-W**

1-Gang Duplex Device Receptacle Wallplate, Midway Size, Thermoplastic Nylon

Traditional Core Products

Description	Color	Cat. No.
15A Tamper-Resistant Duplex Outlet/Receptacle, Grounding, Light White	White	T5320-W
20A Duplex Tamper-Resistant Outlet/Receptacle, Grounding		T5820-W
15A Weather & Tamper-Resistant Duplex Outlet		W5320-T0W
15A Single-Pole Toggle Switch, Grounding		01451-W
15A 3-Way Toggle Switch, Grounding		1453-2W
30A, 125/250 Volt, NEMA 14-30R, 3P, 4W, Flush Mtg Outlet/Receptacle, Straight Blade, Grounding, Side Wired, Steel Strap	Black	278-S00
50A, 125/250 Volt, NEMA 14-50R, 3P, 4W, Flush Mtg Outlet/Receptacle, Straight Blade, Grounding, Side Wired, Steel Strap		279-S00
1-Gang Duplex Outlet/Receptacle Wallplate, Standard Size, Thermoset	White	88003
1-Gang Duplex Outlet/Receptacle Wallplate, Midway Size, Thermoset		88005
1-Gang Toggle Wallplate, Standard Size, Thermoplastic Nylon		80701-W
1-Gang Toggle Wallplate, Midway Size		PJ1-W
1-Gang Duplex Outlet/Receptacle Wallplate, Midway Size, Thermoplastic Nylon		PJ8-W

Please visit leviton.com for complete ordering information, or contact your Leviton representative.

TOP Sellers

RENU®

Renu® is a collection of electrical wiring devices, including switches, receptacles, dimmers, USB charging receptacles and wallplates, that features easily changeable faceplates in many popular colors. Refresh the color of any Renu® device without any rewiring by snapping off the faceplate on the device and snapping on the new color face. Coordinating screwless wallplates snap on to finish the look. Renu® fits any lifestyle and adapts to changing décor.

RUAA1-PG

RENU® 3.6 USB Type-A 15 Amp Tamper-Resistant Receptacle, Pebble Gray



REL06-CA

RENU® LED Dimmer Switch, Café Latte



RER15-CA

RENU® 15 Amp Tamper-Resistant Receptacle, Café Latte



RUAA1-WW

RENU® 3.6 USB Type-A/15 Amp Tamper-Resistant Receptacle, White on White



RENU® Core Products

Description	Color	Cat. No.
RENU® USB Charger/Tamper-Resistant Receptacle, with Dual 3.6A Type-A charging ports	Pebble Gray	RUAA1-PG
RENU® LED/CFL/MLV/Incandescent Dimmer with LED locator and brightness display	Cáfé Latte	REL06-CA
RENU® Tamper-Resistant Receptacle, 15A 125V		RER15-CA
RENU® USB Charger/Tamper-Resistant Receptacle, with Dual 3.6A Type-A charging ports	White on White	RUAA1-WW
RENU® Tamper-Resistant Receptacle, 15A 125V		RER15-WW
RENU® LED/CFL/MLV/Incandescent Dimmer with LED locator and brightness display	Rich Navy	REL06-RN
RENU® Tamper-Resistant Receptacle, 15A 125V		RER15-RN
RENU® 1-Gang Screwless Snap-On Wallplate		REWP1-RN
RENU® USB Charger/Tamper-Resistant Receptacle, with Dual 3.6A Type-A charging ports	Onyx Black	RUAA1-OB

Please visit leviton.com/renu for complete ordering information, or contact your Leviton representative.

RER15-WW

RENU® 15 Amp Tamper-Resistant Receptacle Color Change Faceplate, White on White



REL06-RN

RENU® LED Dimmer Switch, Rich Navy



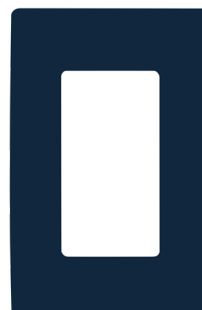
RER15-RN

RENU® 15 Amp Tamper-Resistant Receptacle Color Change Faceplate, Rich Navy



REWP1-RN

RENU® 1-Gang Screwless Snap-On Wallplate, Rich Navy



RUAA1-OB

RENU® 3.6 USB Type-A/15 Amp Tamper-Resistant Receptacle, Onyx Black



**TOP
Sellers**

PROTECTIVE DEVICES

Designed to meet the latest UL standard for auto-monitoring (self-test) our complete line of self-test GFCIs periodically conduct an automatic internal test to confirm that it can respond to a ground fault. With the slimmest profile on the market, the device allows for fast and easy installation, while Leviton's patented reset lockout mechanism prevents reset of the GFCI if it is not wired or operating correctly.

GFNT2-W

20A SmartlockPro®
GFCI Receptacle



GFNT2-HGW

20A SmartlockPro®
GFCI Receptacle,
Hospital Grade



GFTR2-HGW

20A SmartlockPro®
GFCI Receptacle,
Hospital Grade,
Tamper-Resistant



GFNT2-HGI

20A SmartlockPro®
GFCI Receptacle,
Hospital Grade



GFNT2-HGR

20A SmartlockPro®
GFCI Receptacle,
Hospital Grade



GFTR2-HGI

20A SmartlockPro®
GFCI Receptacle,
Hospital Grade,
Tamper-Resistant



MGFT2-W

20A SmartlockPro®
GFCI Receptacle,
Industrial Grade,
Tamper-Resistant,
Lev-Lok®



MGFN2-W

15A SmartlockPro®
GFCI Receptacle,
Industrial Grade,
Tamper-Resistant,
Lev-Lok®



GSRA2

20A GFCI
User Attachable,
Automatic Reset



GSCA1-25C

15A GFCI Cord Set,
25 Foot, Automatic Reset



Protective Devices Core Products

Description	Color	Cat. No.
GFCI Duplex Receptacle with LED Indicator Light 20A-125V @ Receptacle 20A-125V Feed-Through Non-TR	White	GFNT2-W
Hospital Grade GFCI Duplex Receptacle with LED Indicator Light 20A-125V @ Receptacle 20A-125V Feed-Through Non-TR		GFNT2-HGW
Hospital Grade GFCI Duplex Receptacle with LED Indicator Light 20A-125V @ Receptacle 20A-125V Feed-Through Tamper-Resistant		GFTR2-HGW
Hospital Grade GFCI Duplex Receptacle with LED Indicator Light 20A-125V @ Receptacle 20A-125V Feed-Through Non-TR	Ivory	GFNT2-HGI
	Red	GFNT2-HGR
Hospital Grade GFCI Duplex Receptacle with LED Indicator Light 20A-125V @ Receptacle 20A-125V Feed-Through Tamper-Resistant		GFTR2-HGR
	Ivory	GFTR2-HGI
Extra Heavy-Duty Industrial Spec Grade GFCI Duplex Receptacle 20A-125V, Tamper-Resistant, Lev-Lok®	White	MGFT2-W
Extra Heavy-Duty Industrial Spec Grade GFCI Duplex Receptacle 20A-125V, Non-TR, Lev-Lok®		MGFN2-W
Automatic Reset User-Attachable GFCI 20A, Right-Angle Plug	Black	GSRA2
Automatic Reset GFCI 15A, 25 ft. Cord Set, Molded-On Plug and Connector	Yellow	GSCA1-25C

Please visit leviton.com for complete ordering information, or contact your Leviton representative.

TOP
Sellers

COMMERCIAL & INDUSTRIAL RECEPTACLES

Leviton offers a large selection of 15 and 20 Amp commercial spec grade receptacles, including Decora® devices available in a wide variety of colors, wiring options and other features. Leviton's commercial receptacles are manufactured to withstand the demands of commercial and institutional applications. These commercial receptacles provide long-lasting service life and are a cost-saving alternative to the industrial devices.

T5020-WTamper-Resistant
Single Receptacle**TBR20-W**Tamper-Resistant
Duplex Receptacle**CR20-W**20A Duplex
Receptacle/Outlet**5362-W**20A Duplex
Receptacle/Outlet**TCR20-W**Tamper-Resistant
Duplex Receptacle**16352-W**20A Decora Plus™
Duplex Receptacle/Outlet**16342-W**20A Decora Plus™
Duplex Receptacle/Outlet**TDR20-W**Tamper-Resistant
Decora Plus™ Receptacle**8300-HW**20A Duplex
Receptacle/Outlet
Hospital Grade**TWR20-W**Weather- and
Tamper-Resistant
Duplex Receptacle

Commercial & Industrial Receptacles Core Products

Description	Color	Cat. No.
Commercial Spec Grade Receptacle, 20A, 125V, Back and Side Wired, Self-Grounding, Single, Tamper-Resistant	White	T5020-W
Commercial Spec Grade Receptacle, 20A, 125V, Back and Side Wired, Self-Grounding, Duplex, Tamper-Resistant		TBR20-W
Commercial Spec Grade Receptacle, 20A, 125V, Side Wired, Self-Grounding, Duplex		CR20-W
Industrial Spec Grade Receptacle, 20A, 125V, Back and Side Wired, Self-Grounding, Fed Spec, Extra Heavy-Duty, Duplex, Brass Strap with Integral Ground Contacts		5362-W
Commercial Spec Grade Receptacle, 20A, 125V, Side Wired, Self-Grounding, Duplex, Tamper-Resistant		TCR20-W
Industrial Grade Decora Plus™ Heavy-Duty Receptacle, 20A, 125V, Back and Side Wired, Self-Grounding, Heavy-Duty, Duplex		16352-W
Industrial Grade Decora Plus™ Heavy-Duty Receptacle, 20A, 125V, Side Wired, Self-Grounding, Heavy-Duty, Duplex		16342-W
Industrial Grade Decora Plus™ Heavy-Duty Receptacle, 20 Amp, 125 Volt, Back and Side Wired, Self-Grounding, Heavy-Duty, Duplex, Tamper-Resistant		TDR20-W
Heavy-Duty Hospital Grade Receptacle, 20A, 125V, Back and Side Wired, Heavy-Duty, Duplex, Smooth Face		8300-HW
Industrial Spec Grade Duplex Receptacle, 20A, 125V, Weather and Tamper-Resistant, Smooth Face, Back or Side Wire		TWR20-W

Please visit leviton.com for complete ordering information, or contact your Leviton representative.

**TOP
Sellers**

COMMERCIAL GRADE SWITCHES

AC QUIET COMMERCIAL SPECIFICATION GRADE SWITCHES

Leviton's commercial specification grade switches are designed to offer outstanding reliability and top performance in commercial settings. Leviton offers a large selection of 15 and 20 Amp commercial switches in a wide variety of colors, wiring options and other features.

DECORA PLUS™ AC QUIET COMMERCIAL SPECIFICATION GRADE ROCKER SWITCHES

Decora Plus™ devices combine designer styling with all the benefits of rugged commercial grade construction. The robust product offering includes: single pole, double pole, 3- and 4-way switches, momentary and maintained contact switches, as well as pilot light and illuminated switches.

EXTRA HEAVY-DUTY SPECIFICATION GRADE TOGGLE AND LOCKING SWITCHES

Leviton's Industrial Grade AC toggle switches for extra heavy-duty applications represent top-of-the-line quality and peak performance. Leviton uses the finest materials available and the highest production standards to produce industrial switches of unmatched versatility and reliability.

CS120-2W

20A, 120/277V,
Toggle Single-Pole
AC Quiet Switch



CS220-2W

20A, 120/277V,
Toggle Double-Pole
AC Quiet Switch



54504-2W

15A, 120/277V,
Toggle Framed 4-Way
AC Quiet Switch



5621-2W

20A, 120/277V,
Decora Plus™ Rocker
Single-Pole AC Quiet Switch



1257-GY

20A, 120/277V, Toggle
Double-Throw Ctr-OFF Momentary
Contact Single-Pole AC Quiet Switch



3032-2W

30A, 120/277V,
Toggle Double-Pole AC
Quiet Switch



1222-2W

20A, 120/277V,
Toggle Double-Pole
AC Quiet Switch



5657-2W

15A, 120/277V, Decora Plus™
Rocker Double-Throw Ctr-OFF Momentary
Contact Single-Pole AC Quiet Switch



1221-2W

20A, 120/277V,
Toggle Single-Pole
AC Quiet Switch



CS320-2W

20A, 120/277V,
Toggle 3-Way
AC Quiet Switch



Commercial & Industrial Switches Core Products

Description	Color	Cat. No.
Toggle Switch, AC Quiet Side Wired, Fed-Spec, Single Pole, 20A-120/277VAC	White	CS120-2W
Toggle Switch, AC Quiet Side Wired, Fed-Spec, Double Pole, 20A-120/277VAC		CS220-2W
Toggle Switch, AC Quiet Side Wired, Fed-Spec, 4-Way, Framed Toggle, 15A-120/277VAC		54504-2W
Decora Plus™ AC Quiet Rocker Switch, Back and Side Wired, Single Pole, 20A-120/277VAC		5621-2W
Maintained and Momentary Contact Extra Heavy-Duty Specification Grade Switch, Back and Side Wired, Single Pole, Double Throw, Center Off, 20A-120/277VAC	Gray	1257-GY
Extra Heavy-Duty Specification Grade Toggle Switch, Back and Side Wired/Wire Lead, Fed-Spec, Double Pole, 30A-120/277VAC	White	3032-2W
Extra Heavy-Duty Specification Grade Toggle Switch, Back and Side Wired/Wire Lead, Fed-Spec, Double Pole, 20A-120/277VAC		1222-2W
Decora Plus™ Momentary Contact Switch, Back and Side Wired, Single Pole, Double Throw, Center Off, 15A-120/277VAC		5657-2W
Extra Heavy-Duty Specification Grade Toggle Switch, Back and Side Wired/Wire Lead, Fed-Spec, Single Pole, 20A-120/277VAC		1221-2W
Toggle Switch, AC Quiet Side Wired, Fed-Spec, 3-Way, 20A-120/277VAC		CS320-2W

Please visit leviton.com/commercialswitches for complete ordering information, or contact your Leviton representative.

**TOP
Sellers**

COMMERCIAL & INDUSTRIAL WALLPLATES

TRADITIONAL WALLPLATES

Familiar and functional, Leviton traditional wallplates are designed for use with traditional Leviton devices. They represent styles and form factors that have stood the test of time. Their clean lines work in virtually any location, whether in new or retrofit construction, and they install quickly and easily. Leviton offers traditional wallplates in a vast array of colors and configurations.

DECORA® WALLPLATES

Leviton Decora® Designer Wallplates — available in a wide spectrum of colors and styles — can add subtle elegance to any home.

WEATHERPROOF COVERS

The Leviton offering of Weatherproof Covers & Boxes comprises both 1- and 2-gang configurations that comply with the National Electric Code® (2017) Article 406.9 for weatherproof enclosures in damp and wet locations.

4934

2-Gang Receptacle Wallplate, Standard Size, Aluminum



84014

1-Gang Blank Device Wallplate, Standard Size, Magnetic Stainless Steel



84003

1-Gang Duplex Wallplate, Standard Size, Magnetic Stainless Steel



84003-40

1-Gang Duplex Wallplate, Standard Size, Non-Magnetic Stainless Steel, Brushed Finish



84025

2-Gang Blank Wallplate, Standard Size, Magnetic Stainless Steel



84409-40

2-Gang Decora® Wallplate, Standard Size, Non-Magnetic Stainless Steel, Brushed Finish



84016-40

2-Gang Duplex Wallplate, Standard Size, Non-Magnetic Stainless Steel



84401-40

1-Gang Decora® Wallplate, Standard Size, Non-Magnetic Stainless Steel



84020-40

1-Gang Locking Wallplate, Standard Size, Non-Magnetic Stainless Steel



IUM1V-GY

1-Gang Weatherproof Cover, Aluminum



Commercial & Industrial Wallplates Core Products

Description	Material/Finish/Color	Cat. No.
Traditional Wallplate, Power Outlet Receptacle, Standard Size, 2-Gang, 30A and 50A Receptacle, 2.15" dia. hole, Metal	Aluminum	4934*
Traditional Wallplate, Blank, Box Mounted, Standard Size, 1-Gang, Metal	Metal, Stainless Steel	84014
Traditional Wallplate, Duplex Receptacle, Standard Size, 1-Gang, Metal		84003
	Metal, Non-Magnetic S/S	84003-40
Traditional Wallplate, Blank, Box Mounted, Standard Size, 2-Gang, Metal	Metal, Stainless Steel	84025
Decora® Wallplate, Standard Size, 1-Gang, Metal	Metal, Non-Magnetic S/S	84409-40
Traditional Wallplate, Duplex Receptacle, Standard Size, 2-Gang, Metal		84016-40
Decora® Wallplate, Standard Size, 1-Gang, Metal		84401-40
Traditional Wallplate, Power Outlet Receptacle, 1-Gang, Metal		84020-40
Weatherproof Outlet Box Hood (While-in-Use Cover), Die-Cast Aluminum, Extra-Duty Rated; 1-Gang, Includes Inserts for Single, Duplex and Decora®/GFCI Receptacles, Vertical Mounting	Die-Cast Aluminum, Gray	IUM1V-GY

*Use with 278, 279, 5206, 5207, 5371, 5372, 5374

Please visit leviton.com/wallplates for complete ordering information, or contact your Leviton representative.



Looking for more?

Get the Latest Full-Line Catalog (L-400)

The latest edition of the Leviton full-line catalog is here and available for download.

Get all of the up-to-date Leviton product information, via computer or mobile device. With nearly 700 pages of valuable information in a neatly organized, searchable and easy to navigate format, the electronic Full-line Catalog is updated seasonally to provide the latest offerings as soon as they're released. Get it today!

Go to: www.leviton.com/catalog for access to the latest version.

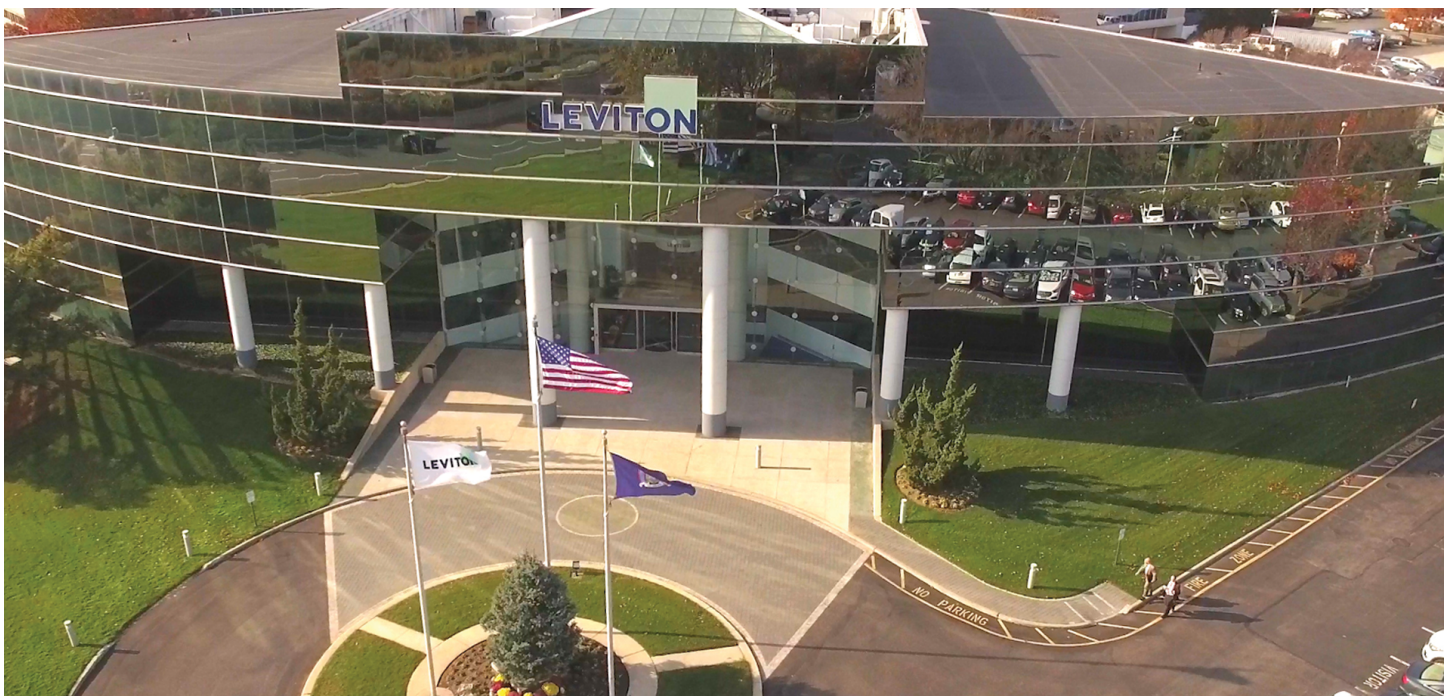
Full-line Catalog Updates

Want to make sure you get the latest version as soon as it's released?

Just visit:

www.leviton.com/full-linecatalog

and enter your email address to have the updated full-line catalog (L-400) sent directly to you as soon as it's released.



Leviton Manufacturing Co., Inc.

201 N Service Rd, Melville, NY 11747
Telephone: 1-800-323-8920 | FAX: 1-800-832-9538
Tech Line (8:30AM-7:30PM E.S.T. Monday-Friday): 1-800-824-3005
© 2025 Leviton Manufacturing Co., Inc. All rights reserved.

Visit Leviton.com for complete product and ordering information

ED-G-00213 MPG Growth Brochure_revB_BG4



10% Total Recycled Fiber