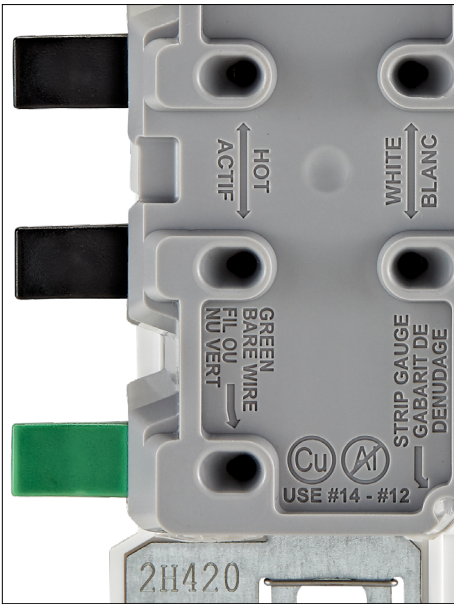


New Products Supplement

2025 Version 1

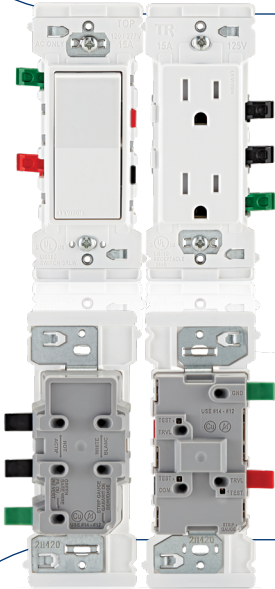


New Products

NEW BAFFLE SLIM AND ADJUSTABLE LED DOWNLIGHTS

Direct mount downlighting solutions for residential and light commercial applications. Ideal for renovations and new construction, the slim design eliminates the need for a recessed housing or junction box. The Regressed Lens with Baffle provides less glare, improving visual comfort and the adjustable models offer up to 80° of tilt and 350° of rotation.

- Available in 4-, 6- and 8-Inch diameter Rounds and 4- and 6-Inch Squares
- Adjustable downlights available in 4- and 6-inch diameter Rounds
- Field selectable Color Temperature (CCT)



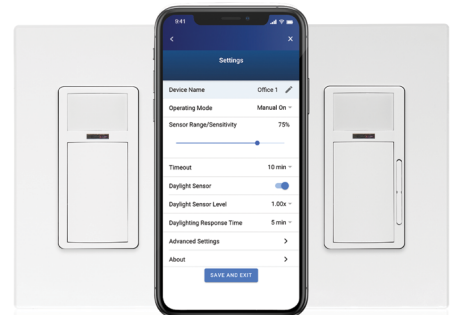
NEW LEVER EDGE™ — THE FUTURE OF WIRING

Leviton's Lever Edge™ wiring devices provide the classic appearance and superior performance of Decora® devices in a new, easier-to-install, safer design. The line consists of Single Pole and 3-Way Switches and a Tamper-Resistant 15-amp Duplex Receptacle. Innovative installation features such as color-coded lever terminals (including the ground terminal) for faster, efficient wiring, a larger strap with a unique tongue and groove alignment feature for quicker trim out on multi-gang installations, and no exposed metal parts for safety, make Lever Edge™ ideal for new home construction and MDU projects as well as retrofit applications.

- Patent pending color-coded lever terminals for fast, efficient wiring; reduces risk of miswiring
- Only Residential device on the market with a quick termination ground wire
- No exposed metal parts for enhanced safety; eliminates need for electrical tape
- Lever connectors work with 14 gauge and 12 gauge stranded and solid copper wire
- Strap's unique tongue and groove alignment offers quicker trim out on multi-gang installations
- Strap works with any sized wallplate
- Devices coordinate seamlessly with other Decora® devices

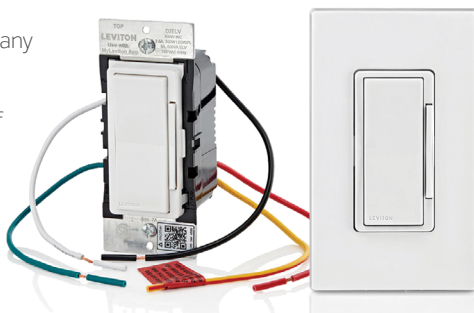
NEW SMART MULTI TECHNOLOGY WALL BOX SENSORS

The new Smart Multi-Tech Wallbox Sensors use Passive Infrared (PIR) detection and Microphonics technology to monitor a room for occupancy. When the PIR sensor detects motion and switches the lights ON, lights will remain ON as long as motion is detected and will turn off when space becomes vacant after the timeout expires. The Microphonic technology "listens" for human activity in the space and will keep the lights ON when motion is detected. Microphonics does not require a direct line of sight and can pick up human activity behind obstructions that PIR-only devices are unable to detect. Configuration of the Smart Multi-Tech Sensors is made using the Leviton Smart Sensor App from a smartphone or other Bluetooth®-enabled Android or iOS device. Simple configuration can also be applied using pushbutton setup for several popular pre-configured options.



NEW DECORA® SMART ELV/LED DIMMER

The Decora Smart® Wi-Fi ELV / LED Phase Selectable Dimmer makes it easy to add smart On/Off and Dim/Bright control to a wide range of lighting including popular electronic low-voltage lighting such as under cabinet, toe kick, track, recessed, accent lighting, or any other applications requiring smart dimming control of electronic low voltage fixtures.



NEW SMART CEILING MOUNT SENSOR AND ROOM CONTROLLER

Smart Sensors offer easy programming and configuration with the Smart Sensor App, an out-of-the-box default mode for auto-ON/auto-OFF operation with a 10-minute timeout, and convenient pushbutton programming for common room settings. Ideal for commercial spaces up to 1,100 SF including offices, meeting rooms, and lobbies.



New Products

NEW SURGE PROTECTIVE PANELS

Leviton's latest surge protective devices include both Type 1 and Type 2 panels for residential, commercial, and industrial applications. These new panels feature improved surge performance ratings, improved enclosure ratings, and are compliant with the latest 2023 NEC and UL 1449 5th edition requirements.

The R, P, B, M, and X Series panels feature NEMA 4 or 4X outdoor ratings and offer a range of solutions from compact and easily installed panels tailored for residential use, to cutting-edge panels featuring LCD screens and advanced functionalities such as surge counting and performance monitoring for industrial use.

Flush Mount Flanges

Available for all Leviton Surge Protective Panels in either Polycarbonate or Aluminum.



NEW HIGH PERFORMANCE 50 AMP HEAVY DUTY FLUSH MOUNT RECEPTACLES

The perfect option for homeowners who prefer a plug-in EV charging application to a hardwired application, and for future-focused new construction MDU projects that want to present an EV-ready environment.

- Built to outperform and outlast
- Built of durable high-impact nylon
- Pressure-wire terminal connections ensure full-contact with the conductors

NEW FLOOR BOXES

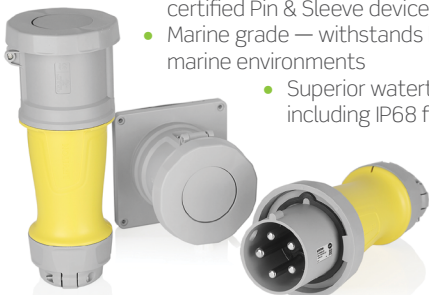
From wood frame construction to concrete pours, our floor boxes offer a full portfolio of products to satisfy the needs of commercial applications. Accommodating data, AV and power connectivity where it's needed most, we provide an all encompassing solution down to the devices inside the box. Our floor box systems are easy to install and built to last, making them a superior choice for commercial settings.



NEW MARINE GRADE PIN & SLEEVE

Marine Grade 100 Amp, 120/208 Volt 3-Phase, 4P, 5W, North American Pin & Sleeve Plug, ABYC Certified, IEC 60309 Industrial Grade, IP66/67/68, & IP69K Watertight — Yellow

- Industry-exclusive — the only manufacturer of ABYC certified Pin & Sleeve devices in the market
- Marine grade — withstands harsh, corrosive marine environments
 - Superior watertight ratings — including IP68 for long-term submersion



NEW EV SERIES PRO SMART COMMERCIAL AND FLEET CHARGING SOLUTIONS

- Multi-site, multi-station management in a single dashboard
- Real-time analytics and data
- Create multiple user groups for access control
- In-app and RFID access, including RFID access with existing badges, room keys, etc.
- Fleet telematics integration capabilities



Featured Products

LEVITON LOAD CENTER

Access whole-home energy use data from anywhere with the award-winning Leviton Load Center and My Leviton app. New 2nd Gen Smart Circuit Breakers provide unparalleled control of your home's electrical system, including remote breaker scheduling and control to save energy, and intuitive insights into energy usage from the grid and alternate energy sources.

- Modern design with intuitive functionality and appealing aesthetics
- LEDs communicate trip condition and type of fault (AF/GF)
- Modular design allows for easy upgrades to smart circuit breakers
- Remote ON/OFF control and time/day-based circuit scheduling
- Receive notifications and alerts for breaker activity, anomaly detection and energy usage
- Whole home energy monitoring
- Allows for all wiring at rough-in, without any circuit breakers present
- Only Fully Plug-On Breaker System (up to 60A)
- Leviton Circuit Breakers simply snap in for up to 25% faster install



DECORA SMART®

It's easy to create a smart home by adding smart switches, dimmer switches, smart plugs, outlets, motion sensors and fan controllers that will help make your life safer and more convenient. Schedule and control using the My Leviton app or use your voice with Amazon Alexa™, Google Assistant™, or HomeKit™/Siri®. You can also connect locally to any Matter enabled smart home platform of your choice securely and reliably with a simple firmware update available in the My Leviton app. Decora Smart® offers smart solutions for every room and home, new or old, including homes that may not have neutral wiring.

USB CHARGER/RECEPTACLES

SmartlockPro® Self-Test GFCI Combination USB Type A/C

The new SmartlockPro® GFCI Combination USB Type A/C In-Wall Charger delivers maximum power for faster charging versus the competition — up to 2X more charging power. Plus, Leviton smart chip technology is integrated into the design, so the USB recognizes the device that's connected to provide just the right amount of charging power for fast and efficient charging.

- Our SmartlockPro® GFCI Combination USB offers the trusted safety of Leviton GFCI protection with the advantage of powerful USB charging
- Overcurrent protection on USB ports helps protect electronics from receiving too much power which can damage devices
- Internal regulator on USB ports prevents electronics from overheating
- Outlets are tamper-resistant to help keep children safe



COMMERCIAL AND RESIDENTIAL SENSORS

Leviton offers a wide selection of occupancy and vacancy sensors for commercial and residential applications. From wall and ceiling mounted to wall switch and wireless, with passive infrared, humidity, ultrasonic or multi-technology sensing; Leviton sensors provide smart energy saving solutions for indoor and outdoor use for commercial and residential applications.



Featured Products

VERIFEYE® SUBMETERING

VerifEye™ delivers a comprehensive line of leading-edge submeters, communication products, and software solutions to help commercial, residential, and industrial facilities manage costs and conserve energy. The cost-effective scalability and integration provide timely solutions that can be expanded for future needs. Submetering expertise, service and support from start to finish from a name you can trust.



POWER PEDESTALS

Announcing the new, full portfolio of Leviton power pedestals, bringing power to previously unreachable locations. Applications include commercial spaces, RV and campsites, and marinas.

Power Pedestals for Commercial Spaces

- For indoor and outdoor use
- Quick and easy installation
- Available in a variety of heights, colors and configurations

Pedestals for RV, Campsites & Marine Applications

- Easy wiring and maintenance access
- Water hook-up options
- Analog water and kW meter available
- Daylight sensing LED lighting



MED STRIPS

Leviton's load monitoring med-strip with Inform™ technology is the only solution on the market addressing NFPA 99 load monitoring requirements in the patient care vicinity.

Inform® Technology

Inform™ is a technology platform that enables Leviton products to provide real-time product data to the end-user. This data is used to improve safety, efficiency, and productivity. The feature set varies by product and can include line of sight local monitoring and remote monitoring. Remote monitoring data is sent to the Inform™ app via Wi-Fi®.



Baffle Slim Led Downlight With Selectable CCT

Baffle Slim Led Downlight With Selectable Cct		
Description	Standard Pack	Cat. No.
4" Round Baffle Slim LED Downlight	12	DBR40-S1W
6" Round Baffle Slim LED Downlight		DBR60-S1W
8" Round Baffle Slim LED Downlight		DBR80-S1W
4" Square Baffle Slim LED Downlight		DBS40-S1W
6" Square Baffle Slim LED Downlight		DBS60-S1W
4-inch round aperture Adjustable Slim Downlight		DAR40-SW1
6-inch round aperture Adjustable Slim Downlight		DAR60-SW1

Lever Edge™

Single, 3-Way and 15A Duplex Receptacle			
Description	Color	Rating	Cat. No.
Single Pole Switch	White	15A 120/277V	E5601
3-Way Switch			E5603
15A Tamper-Resistant Duplex Receptacle		15A, 125V	E5325

Commercial Sensors

Smart Multi Technology Wall Box Sensors				
Description	Coverage	Rating	Cat. No.	Color*
Smart PIR 0-10V Dimming Wallbox Sensor	180°, 1100SF (102SM)	General Purpose @ 120V: 10A General Purpose @ 277V: 10A LED/Electronic Ballast @ 120V: 8A LED/Electronic Ballast @ 277V: 5A Standard Ballast @ 120V, 277V: 10A	ODD10-ID	W, I
Smart PIR 0-10V Antimicrobial Wall Switch Sensor		Tungsten @ 120V, 277V: 6.67A Motor @ 120V: 1/4HP (FLA 5.8A) Motor @ 277V: 1/3HP (FLA 3.0)	011-ODD10-IDW 012-ODD10-IDI	I
Smart PIR Wallbox Sensor		General Purpose @ 120V, 277V: 20A LED/Electronic Ballast @ 120V, 277V: 10A Standard Ballast @ 120V, 277V: 10A Tungsten @ 120V, 277V: 6.67A Motor @ 120V: 1/4HP (FLA 5.8A) Motor @ 277V: 1/3HP (FLA 3.0) No Neutral Required	ODS15-GD	W*
Smart PIR Wall Switch Sensor		General Purpose @ 120-277VAC, 60Hz LED/Electronic Ballast @ 120V, 277V: 10A Standard Ballast @ 120V, 277V: 10A Tungsten @ 120V, 277V: 6.67A Motor @ 120V: 1/4HP (FLA 5.8A) Motor @ 277V: 1/3HP (FLA 3.0) Neutral Required	ODS15-ID	W, I*
Smart PIR Wall Switch Sensor		General Purpose @ 120-277VAC, 60Hz LED/Electronic Ballast @ 120V, 277V: 10A Standard Ballast @ 120V, 277V: 10A Tungsten @ 120V, 277V: 6.67A Motor @ 120V: 1/4HP (FLA 5.8A) Motor @ 277V: 1/3HP (FLA 3.0) Neutral Required	ODS15-I1	W, I*

Continued on next page

Commercial Sensors

Smart Multi Technology Wall Box Sensors				
Description	Coverage	Rating	Cat. No.	Color*
Smart PIR Antimicrobial Wall Switch Sensor	180°, 1100SF (102SM)	General Purpose @ 120V, 277V: 20A LED/Electronic Ballast @ 120V, 277V: 10A Standard Ballast @ 120V, 277V: 10A Tungsten @ 120V, 277V: 6.67A Motor @ 120V: 1/4HP (FLA 5.8A) Motor @ 277V: 1/3HP (FLA 3.0) No Neutral Required	030-ODS15-GDW	W
			031-ODS15-GDI	I
			022-ODS15-IDW	W
			018-ODS15-IDI	I
			017-ODS15-I1W	W
			019-ODS15-I1I	I
Smart PIR 24V Dimming Wallbox Sensor	12-24VDC		ODD24-ID	W*
Smart PIR Antimicrobial 24V Dimming Wallbox Sensor			011-ODD24-IDW	
Smart PIR 1000W Dimming Sensor			ODP10-I1**	W, I
Smart PIR Antimicrobial 1000W Dimming Wallbox Sensor			011-ODP10-I1W	W
			012-ODP10-I1I	I

Smart IP66 PIR Integrated Fixture Mount Sensor	
Description	Cat. No.
Dimming Daylight Harvesting PIR Occupancy Sensor; End/Fixture Mount; 120-277VAC 50/60 Hz; IP65 Rating for High and Low-Temp, Watertight, Indoor/Outdoor; Single Zone 0-10V Dimming, 120-277VAC single-pole 5A relay; 8-20' Lens and 20-40' lens included	OFD1Z-ISW
Dimming Daylight Harvesting PIR Occupancy Sensor; End/Fixture Mount; Universal Voltage 120-480VAC 50/60 Hz; IP65 Rating for High and Low-Temp, Watertight, Indoor/Outdoor; Single Zone 0-10V Dimming, 120-347VAC 2-pole 5A relay; 8-20' Lens and 20-40' lens included	OFDUZ-ISW

Decora® Residential Grade Wall Switch Humidity Sensor and Fan Controls  			
Description	Cat. No.	Color	Rating
Humidity Sensor and Fan Control, Single Pole	DHS05-1L	W, I, T	300W LED/CFL 600W Inc/Halogen 400VA ELV/MLV 1/4 HP Motor
Combination Humidity Sensor and Fan Control with Light Switch, Single Pole	DHD05-1L	W	Fan Load (Blue Wire) 1/4 HP Fan 300W LED/CFL 600W Inc/Halogen 400VA MLV/ELV Light Load (Red Wire) 150W LED/CFL 250W Inc/Halogen 200VA MLV 250VA ELV 2A Resistive

Surge Protective Panels

Type 1

R & P Series Surge Protective Panels

Series	Voltage	Phase	Maximum Continuous Operating Voltage (MCOV)	Voltage Protection Rating (VPR) Performance Data	Cat. No.
R	120/240 VAC/CA	Split Phase	180V/360V*	L-N: 700V, L-L: 1200V	R2120-B
P	120/240 VAC/CA	Split Phase	180V/360V*	L-N: 700V, L-G: 1200V, N-G: 600V, L-L: 1200V	P2120-B
	208Y/120 VAC/CA	Three Phase WYE	150V/300V*	L-N: 600V, L-G: 600V, N-G: 600V, L-L: 1000V	P3120-YB
	480Y/277 VAC/CA		350V/700V*	L-N: 1200V, L-G: 2500V, N-G: 1000V, L-L: 2000V	P3277-YB

*Second voltage refers to L-L rating

Accessories for Flush Mount Applications

Series	Voltage	Cat. No.
R	R Series Flush Mount Flange - Polycarbonate	RSURG-FLG
P	P Series Flush Mount Flange - Polycarbonate	PSURG-FLG

Type 2

B, M & X Series Surge Protective Panels

Series	Voltage	Phase	Maximum Continuous Operating Voltage (MCOV)	Voltage Protection Rating (VPR) Performance Data	Cat. No.
B	120 VAC/CA	Single Phase	180V	L-N: 700V, L-G: 700V, N-G: 700V	B1120-B
	120/240 VAC/CA	Split Phase	180V/360V*	L-N: 700V, L-G: 700V, N-G: 700V, L-L: 1200V	B2120-B
	208Y/120 VAC/CA	Three Phase WYE	150V/300V*	L-N: 700V, L-G: 700V, N-G: 600V, L-L: 1200V	B3120-YB
	240 VAC/CA		275V	L-G: 1000V, L-L: 1200V	B3240-DB
	120/240 VAC/CA	Hi-Leg Delta	180/275V*	L-N: 800V, L-G: 700V, N-G: 700V, L-L: 1500V	B3240-HB
	480Y/277 VAC/CA	Three Phase WYE	350V/700V*	L-N: 1200V, L-G: 1200V, N-G: 1200V, L-L: 2500V	B3277-YB
	347/600 VAC/CA		440V/880V*	L-N: 1500V, L-G: 1500V, N-G: 1500V, L-L: 3000V	B3347-YB
	480 VAC/CA	Three Phase Delta	550V	L-G: 1800V, L-L: 1800V	B3480-DB
M	120/240 VAC/CA	Split Phase	180V/360V*	L-N: 700V, L-G: 800V, N-G: 600V, L-L: 1200V	M2120-B
	208Y/120 VAC/CA	Three Phase WYE	150V/300V*	L-N: 600V, L-G: 700V, N-G: 600V, L-L: 1000V	M3120-YB
	240 VAC/CA	Three Phase Delta	275V	L-G: 900V, L-L: 1800V	M3240-DB
	480Y/277 VAC/CA	Three Phase WYE	350V	L-N: 1200V, L-G: 1200V, N-G: 1000V, L-L: 2000V	M3277-YB
	347/600 VAC/CA		440V/880V*	L-N: 1500V, L-G: 1500V, N-G: 1500V, L-L: 2500V	M3347-YB
	480 VAC/CA	Three Phase Delta	550V	L-G: 1800V, L-L: 1800V	M3480-DB
	600 VAC/CA		680V	L-G: 2000V, L-L: 2000V	M3600-DB
X	120/240 VAC/CA	Split Phase	175V/300V*	L-N: 600V, L-G: 700V, N-G: 600V, L-L: 900V	X2120-C
	208Y/120 VAC/CA	Three Phase WYE	150V/300V*	L-N: 600V, L-G: 600V, N-G: 600V, L-L: 1000V	X3120-YC
	480Y/277 VAC/CA		320V/700V*	L-N: 1200V, L-G: 1200V, N-G: 1200V, L-L: 2000V	X3277-YC

*Second voltage refers to L-L rating

Accessories for Flush Mount Applications

Series	Voltage	Cat. No.
B	B Series Flush Mount Flange - Aluminum	BSURG-FLG
M	M Series Flush Mount Flange - Aluminum	MSURG-FLG
X	X Series Flush Mount Flange - Aluminum	XSURG-FLG

USBs with Power Delivery

Charge up to 2X Faster with Power Delivery				
Rating		USB Port: 30W Receptacle: 15A-125V	USB Port: 60W Receptacle: 15A-125V	USB Port: 60W Receptacle: 20A-125V
Description	Color		Cat. No.	Cat. No.
Dual Type-C™ with Power Delivery (PD) USB Charger Receptacle	W, I, T, G, E, B	—	T5636	T5836
60W Type A/Type-C with Power Delivery (PD) Charger Receptacle T5634/T5834		—	T5634	—
30W Dual Type-C T5635/T5835		T5635	—	—

Verifeye™ Mini Meter™ Multiple Meter Units

Please visit leviton.com/verifeye to find complete ordering information for Verifeye™ Mini Meter™ Multiple Meter Units, or contact your Leviton representative

High Performance 50 Amp Heavy Duty Flush Mount Receptacles

EVSE Growth Products	
Description	Cat. No.
50 Amp EV Charging Receptacle/Outlet, Heavy Duty	1450R
50 Amp EV Charging Receptacle/Outlet, Heavy Duty, Weather-Resistant	1450W

Power Pedestals

Please visit leviton.com/powerpedestals to find complete ordering information for Power Pedestals, or contact your Leviton representative

EV Series Smart Home Plug-In

EV Series Smart Home Plug-In	
Description	Cat. No.
EV Series Smart Home Level 2 Charging Station, 40 Amp (9.6kW) Plug-In	EV40P

EV Series Pro Smart Commercial and Fleet Charging

EV Series Smart Home Plug-In	
Description	Cat. No.
EV Series Pro Level 2 Electric Vehicle Charging Station, 48A	EV48G
EV Series Pro Level 2 Electric Vehicle Charging Station, 80A	EV80S

Load Center

Please visit leviton.com/loadcenter for complete ordering information, or contact your Leviton representative

Decora® Smart Plug, Outdoor, Wi-Fi

Decora Smart® with Wi-Fi Single Pole, 3-Way/Multi-Location — Neutral Wire Required

Description		Color	Cat. No.
Outdoor Plug-in Switch	15A Gen Use 5A LED/CFL/Electronic Ballast 1500W Inc/Halogen 12A Magnetic Ballast/MLV 3/4 HP Motor	White	D2150-1R

Decora Smart® Wi-Fi® 2nd Gen Devices

Decora Smart® with Wi-Fi® 2nd Gen Technology

Description	Cat. No.
Scene Controller Switch (2nd Gen)	D2SCS--1BW
4-Speed Fan Controller (2nd Gen)	D24SF-1BW
600W Dimmer (2nd Gen)	D26HD-1BW
15A Switch (2nd Gen)	D215S-1BW
Mini Plug-In Dimmer (2nd Gen)	D23LP-1BW
Mini Plug-In Switch (2nd Gen)	D215P-1BW
15A Tamper-Resistant Outlet (2nd Gen)	D215R-1BW
Motion Sensing Dimmer (2nd Gen)	D2MSD-1BW

Decora Smart® No-Neutral Devices

Decora Smart® No-Neutral Dimmer, Switch, and Wi-Fi Bridge

Description	Color	Cat. No.
Plug-In Wi-Fi Bridge (Required for use with DN6HD and DN15S)	White	MLWSB-1BW
600W No-Neutral Dimmer		DN6HD-1BW
15A No-Neutral Switch		DN15S-1BW

Decora Smart® Companion Devices

Decora Smart® Companion Devices for 3-Way or More Applications

Description	Cat. No.
Wire-Free Anywhere Dimmer Companion	DAWDC-1BW
Wire-Free Anywhere Switch Companion	DAWSC-1BW
Wired Dimmer Companion	DD00R-DLZ
Wired Switch Companion	DD0SR-DLZ

USB Charger Receptacles

Residential USB In-Wall Chargers		
Description	Color	Cat. No.
Decora® USB Charger Combination Device, Dual Type A USB In-Wall Charger with Duplex Tamper-Resistant , 15A-125V	White	T5632-W
Decora® USB Charger Combination Device, Dual Type A USB In-Wall Charger with Duplex Tamper-Resistant , 20A-125V		T5832-W
Decora® USB Charger Combination Device, Dual Type A USB In-Wall Charger with Duplex Tamper-Resistant , 15A-125V	Black	T5632-E
Decora® USB Charger Combination Device, Dual Type A USB In-Wall Charger with Duplex Tamper-Resistant , 20A-125V		T5832-E
Decora® USB Charger Combination Device, Type A and Type-C USB In-Wall Charger with Duplex Tamper-Resistant , 15A-125V	White	T5633-W
Decora® USB Charger Combination Device, Type A and Type-C USB In-Wall Charger with Duplex Tamper-Resistant , 20A-125V		T5833-W
Decora® USB Charger Combination Device, Type A and Type-C USB In-Wall Charger with Duplex Tamper-Resistant , 15A-125V	Black	T5633-E
Decora® USB Charger Combination Device, SmartlockPro® Self-Test GFCI Combination USB Type A/C In-Wall Charger, 15A-125V		GUSB1-W
Decora® USB Charger Combination Device, SmartlockPro® Self-Test GFCI Combination USB Type A/C In-Wall Charger, 20A-125V		GUSB2-W

Pin & Sleeve

Marine Grade	
Description	Cat. No.
Marine Grade 100 Amp, 125/250 Volt, 3P, 4W, North American Pin & Sleeve Receptacle, ABYC Certified, IEC 60309 Industrial Grade, IP66/67/68, & IP69K Watertight - Gray	M4100R12WLEV
Marine Grade 100 Amp, 125/250 Volt, 3P, 4W, North American Pin & Sleeve Connector, ABYC Certified, IEC 60309 Industrial Grade, IP66/67/68, & IP69K Watertight - Yellow	M4100C12WLEV
Marine Grade 100 Amp, 125/250 Volt, 3P, 4W, North American Pin & Sleeve Plug, ABYC Certified, IEC 60309 Industrial Grade, IP66/67/68, & IP69K Watertight - Yellow	M4100P12WLEV
Marine Grade 100 Amp, 277/480 Volt 3-Phase, 4P, 5W, North American Pin & Sleeve Connector, ABYC Certified, IEC 60309 Industrial Grade, IP66/67/68, & IP69K Watertight - Yellow	M5100C7WLEV
Marine Grade 100 Amp, 277/480 Volt 3-Phase, 4P, 5W, North American Pin & Sleeve Plug, ABYC Certified, IEC 60309 Industrial Grade, IP66/67/68, & IP69K Watertight - Yellow	M5100P7WLEV
Marine Grade 100 Amp, 277/480 Volt 3-Phase, 4P, 5W, North American Pin & Sleeve Receptacle, ABYC Certified, IEC 60309 Industrial Grade, IP66/67/68, & IP69K Watertight - Gray	M5100R7WLEV
Marine Grade 100 Amp, 120/208 Volt 3-Phase, 4P, 5W, North American Pin & Sleeve Plug, ABYC Certified, IEC 60309 Industrial Grade, IP66/67/68, & IP69K Watertight - Yellow	M5100P9WLEV
Marine Grade 100 Amp, 120/208 Volt 3-Phase, 4P, 5W, North American Pin & Sleeve Connector, ABYC Certified, IEC 60309 Industrial Grade, IP66/67/68, & IP69K Watertight - Yellow	M5100C9WLEV
Marine Grade 100 Amp, 120/208 Volt 3-Phase, 4P, 5W, North American Pin & Sleeve Receptacle, ABYC Certified, IEC 60309 Industrial Grade, IP66/67/68, & IP69K Watertight - Gray	M5100R9WLEV

Floor Boxes

Please visit <https://leviton.com/products/commercial/floor-boxes> for complete ordering information, or contact your Leviton representative



Looking for more?

Get the Latest Full-Line Catalog (L-400)

The latest edition of the Leviton full-line catalog is here and available for download.

Get all of the up-to-date Leviton product information, downloaded to your mobile device. With nearly 700 pages of valuable information in a neatly organized, searchable and easy to navigate format, the electronic Full-line Catalog is updated seasonally to provide the latest offerings as soon as they're released. Download yours today!

Go to: www.leviton.com/catalog for access to the latest version.

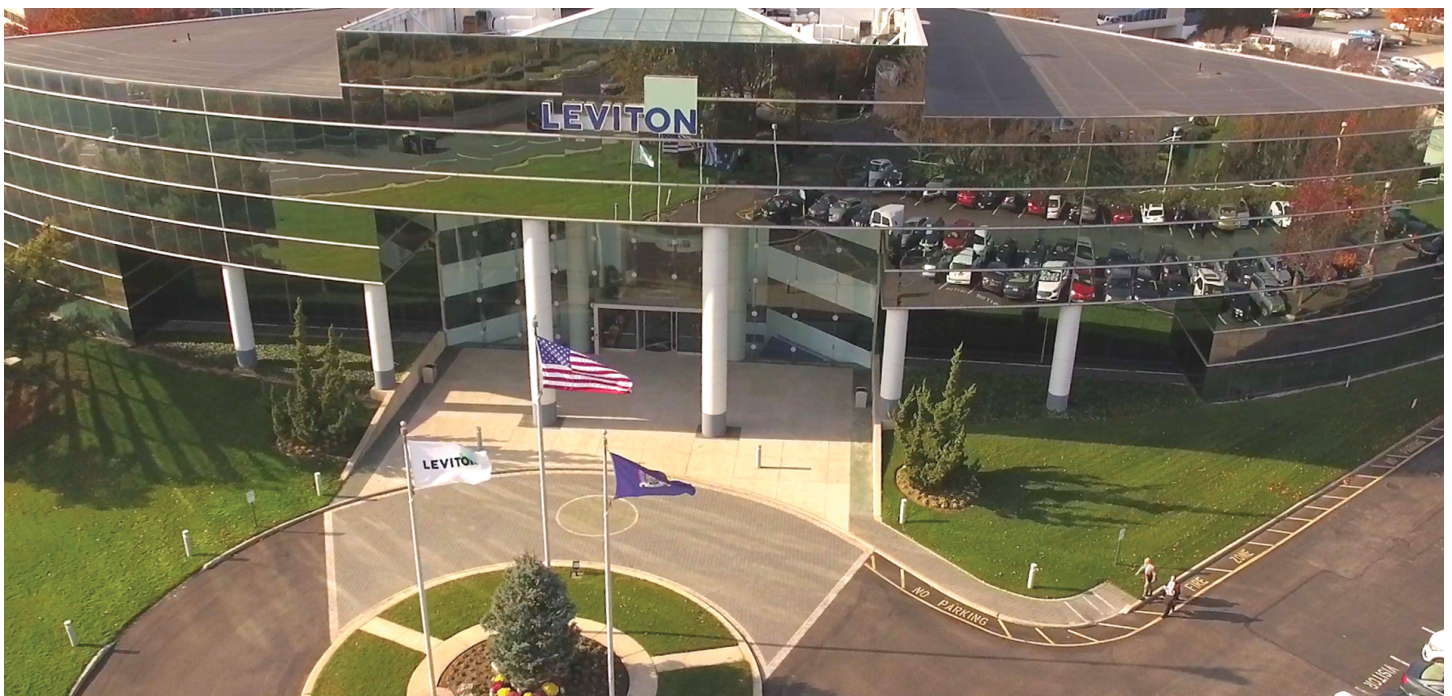
Full-line Catalog Updates

Want to make sure you get the latest version as soon as it's released?

Just visit:

www.leviton.com/full-linecatalog

and enter your email address to have the updated full-line catalog (L-400) sent directly to you as soon as it's released.



Leviton Manufacturing Co., Inc.

201 N Service Rd, Melville, NY 11747
Telephone: 1-800-323-8920 | FAX: 1-800-832-9538
Tech Line (8:30AM-7:30PM E.S.T. Monday-Friday): 1-800-824-3005
© 2025 Leviton Manufacturing Co., Inc. All rights reserved.



Visit Leviton.com for complete product and ordering information

ED-C-00110 New Product Quarterly Supplement_2025 Version1_A2