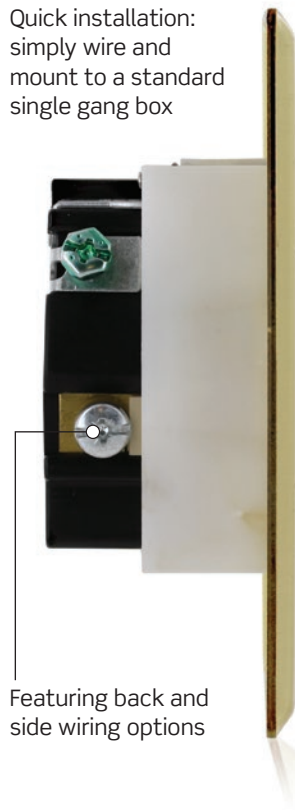


# Tamper-Resistant Single Display Receptacles

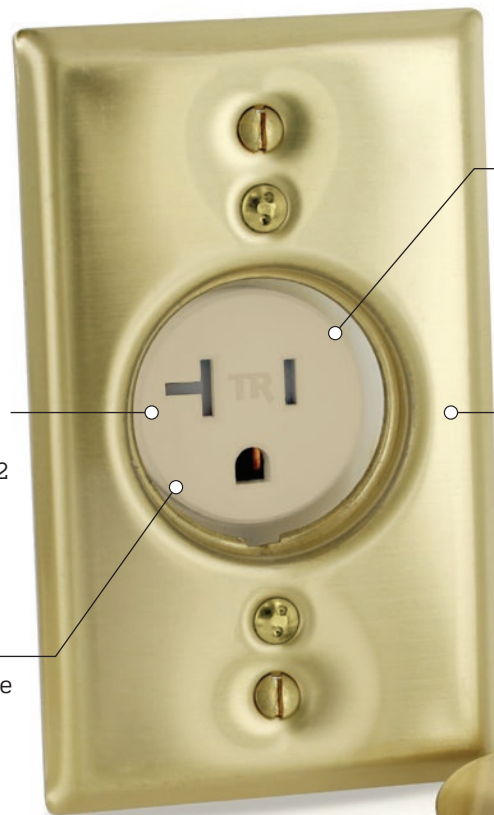
Quick installation:  
simply wire and  
mount to a standard  
single gang box



Featuring back and  
side wiring options

Tamper-Resistant  
receptacle meets  
NEC Article 406.12  
requirements

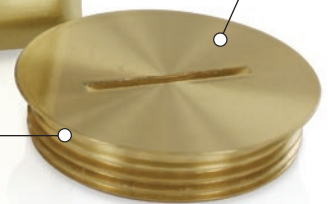
Heavy duty  
specification grade  
receptacle



Single receptacle is  
ideal for applications  
that require a  
dedicated circuit

Brass plate and  
screw cap resist  
abuse and  
prevent foreign  
contaminants from  
entering device

Screw cap prevents access to outlet by  
unauthorized person when not in use



## Ordering Information

| Description                                   | 15A      | 20A     |
|---|----------|---------|
| Ivory Receptacle with Brass Plate & Screw Cap | T5250-B  | T5350-B |
| Brass Replacement Cap                         | 5249-CAP |         |

## Common Applications

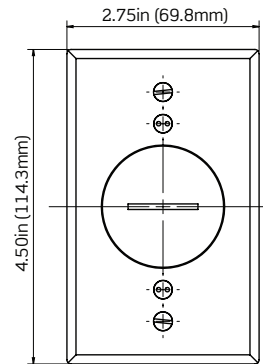
- Store Display Cases & Windows
- Hallways in Educational Facilities & Public Buildings

## Specifications

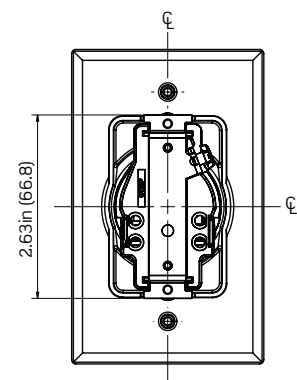
| Description                           | T5250-B   | T5350-B |
|---------------------------------------|---|---------|
| <b>AC Horsepower Rating</b>           |   |         |
| At Rated Voltage                      | 1/2 HP  | 1HP     |
| <b>Electrical Specifications</b>      |   |         |
| Amperage                              | 15A   | 20A     |
| Voltage                               | 125V  | 125V    |
| NEMA                                  | 5-15R   | 5-20R   |
| Pole                                  | 2   | 2       |
| Wire                                  | 3   | 3       |
| Dielectric Voltage                    | Withstands 2000V per UL498                                |         |
| Temperature Rise                      | Max 30 °C after 100 cycles at 150 percent rated current   |         |
| <b>Environmental Specifications</b>   |   |         |
| Flammability                          | Rated V-2 per UL 94                                       |         |
| Operating Temperature                 | -40 °C to +75 °C  |         |
| <b>Material Specifications</b>        |   |         |
| Receptacle Face                       | Nylon (Color: Ivory)                                      |         |
| Receptacle Body                       | Nylon   |         |
| Receptacle Line Contacts              | Brass Triple-Wipe   |         |
| Receptacle Mounting Screws            | Steel 10-32   |         |
| Receptacle Grounding Screw            | Steel 8-32  |         |
| Receptacle Strap                      | Zinc-Plated Steel   |         |
| Wallplate                             | Brass; 0.061" thick                                       |         |
| Cap                                   | Brass   |         |
| <b>Mechanical Specifications</b>      |   |         |
| Terminal ID                           | Brass-Hot, Green-Ground, Silver -Neutral                  |         |
| Terminal Accom.                       | 14-10 AWG   |         |
| Termination                           | Back and Side Wiring                                      |         |
| <b>Standards &amp; Certifications</b> |   |         |
| NEMA                                  | WD-1 and WD-6   |         |
| ANSI                                  | C-73  |         |
| Certification/Listing                 | cCSAus, NOM-ANCE  |         |
| Applicable Standards                  | UL 498, UL 514A, CSA C22.2, No. 42, CSA C22.2 No. 18.1-04 |         |
| <b>Guarantees</b>                     |   |         |
| Product Warranty                      | 10 Year Limited   |         |

## Dimensions

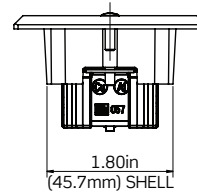
Front View



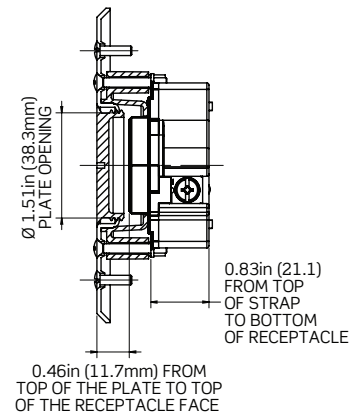
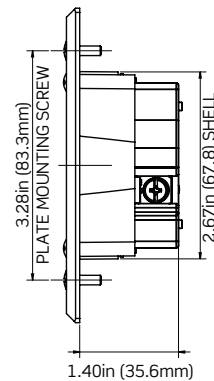
Back View



Top View



Side View



Visit our Website at:

[www.leviton.com/industrial](http://www.leviton.com/industrial)

email: [industrial@leviton.com](mailto:industrial@leviton.com)

Q-917

**Leviton Manufacturing Co., Inc.**

201 N Service Rd, Melville, NY 11747

Telephone: 1-800-323-8920 • FAX: 1-800-832-9538

Tech Line (8:30AM-7:30PM E.S.T. Monday-Friday): 1-800-824-3005

© 2014 Leviton Manufacturing Co., Inc. All rights reserved.

121914

