

**NEMA WIRING DEVICES LOCKING & STRAIGHT BLADE
DRIPTIGHT/DUST-TIGHT/RAINPROOF/RAINTIGHT
WATERTIGHT(SUBMERSIBLE) & CORROSION-RESISTANT PLUGS & CONNECTORS**

15 A & 20 A - 125 V, 250 V & 277 VAC

Cat. No. LNR80

PK-A3048-10-02-0B

ENCLOSURE RATING: UL50E TYPE 3R, 4, 4X, 6, 6P, 12, 13, IP66/IP67/IP68/IP69K WHEN MATED TO LEVITON LNR86/LNR96

Cat. No. LNR86

ENCLOSURE RATING: UL50E TYPE 3R, 4, 4X, 6, 6P, 12, 13, IP66/IP67/IP68/IP69K COVER CLOSED OR MATED TO LEVITON LNR80

WARNINGS & CAUTIONS:

- **TO AVOID FIRE, SHOCK OR DEATH; UNPLUG CORD OR TURN OFF POWER AT CIRCUIT BREAKER OR FUSE AND TEST THAT POWER IS OFF BEFORE WIRING!**
- Examine the devices periodically for any foreign matter that may contaminate the contacts or the insulation material separating the contacts. Contamination decreases the device's insulating properties. This increases the potential for arcing, possibly decreases the product's life and may cause fire and/or shock hazard. The frequency of inspection depends upon the degree of contamination.
- To be installed and/or used in accordance with appropriate electrical codes and regulations.
- If you are not sure about any part of these instructions, consult an electrician.
- Use this device with **COPPER OR COPPER CLAD WIRE ONLY.**

INSTALLATION

ENGLISH

NOTES:

- When rhino-hide™ LNR86 connector is **NOT** in use, protect it with the provided threaded closure cover. Tighten to 60 lb*in (5 lb*ft) [6.77 N*m]. Max torque 120 lb*in (10 lb*ft) [13.5 N*m].
- For use in Driptight/Dust-tight/Rainproof/Raintight/Watertight (Submersible) and Corrosion-Resistant locations with cover closed or plug connected when installed in strict compliance with the following instructions.
- **LNR86: IP68 - 3m @ 24h cover closed or mated with LNR80.**

TO INSTALL:

1. **TO AVOID FIRE, SHOCK OR DEATH; UNPLUG CORD OR TURN OFF POWER AT CIRCUIT BREAKER OR FUSE AND TEST THAT POWER IS OFF BEFORE WIRING!**
2. Select round cord size and type (Table 1). To maintain oil and watertight ratings UL50E type cord used must include O (oil) or W (weather resistant) grades. Consult appropriate electrical codes and regulations.
3. Unscrew and remove nut from rubber housing. Separate wiring module from rubber housing by unscrewing assembly screws and pushing the module from back of housing with a screw driver (or cord).
4. Select proper size of strain relief washer and rubber bushing per your cord size (Table 1). The washers and bushings must be broken apart from each other (Figures 1 & 2).
5. Insert cord through nut, strain relief washer, rubber bushing and into threaded insert of housing as shown (Figures 1 & 2). **DO NOT REVERSE ORIENTATION OF STRAIN RELIEF WASHER AND RUBBER BUSHING.**
6. Strip cord jacket 0.938" (2.4 cm). Strip insulation to expose 0.562" (1.4 cm) bare copper at the end of each conductor as shown in Figure 3 or per strip gage on device.
7. **TO CONNECT WIRES:** Fully back out terminal screws. Twist all strands of each conductor tightly together (**DO NOT TIN CONDUCTORS**). Insert into proper wire well (Table 2) and tighten terminal screws firmly to 12-14 lb*in (1-1.1 lb*ft) [1.3-1.5 N*m].
NOTE: Terminal screws **MUST** contact on conductor only, **NOT** on insulation. **DO NOT** use solid wire.
8. Reattach the wired device module to the housing by aligning key guide on the module to the key on the housing. Tighten the three (3) assembly screws.
9. Push up rubber bushing and strain relief washer over cord so that the nut can engage the threaded insert.
IMPORTANT: You must hold the rubber housing firmly when tightening the nut. Tighten nut 12-14 lb*in (1-1.1 lb*ft) [1.3-1.5 N*m]. Minimum torque requirement to ensure NEMA/IP ratings is 30 lb*in (2.5 lb*ft) [3.39 N*m]. Max torque limit 40 lb*in (3.33 lb*ft) [4.5 N*m].
10. To mate plug with receptacle and connector, push-in for straight blade or twist (turn) for locking blade.
11. Secure mating device by tightening Hex-nut. Minimum torque requirement of the hex-nut to ensure NEMA/IP ratings is 60 lb*in (5 lb*ft) [6.77 N*m]. Max torque limit 120 lb*in (10 lb*ft) [13.5 N*m].
WARNING: If the hex-nut of a locking plug is backed off or loose for any reason disconnect the hex-nut completely, verify the locking plug is in the locked position and then re-tighten the hex-nut to the requirements in step 11.

TABLE 2

WIRE	TERMINAL SCREWS	
	125 V & 277 VAC	250 V
Green	Green	Green
White	Silver	Brass/Black
Black	Brass/Black	Brass/Black

PARTS:

- | | | |
|--------------------------------------|--|-------------------------------------|
| 1 - Nut | 6 - Threaded Closure Cover (Connector Only) | 10 - Rubber Bushing (Table 1) |
| 2 - Cord (not provided) | 7 - Assembly Screw (3) | 11 - Strain Relief Washer (Table 1) |
| 3 - Rubber Housing | 8 - Terminal Screw Wiring Clamp (3) | 12 - Hex-nut |
| 4 - Wiring Module | 9 - Key Guide on Wiring Module (to be aligned with Key-on Housing) | |
| 5 - Threaded Insert (Connector Only) | | |

FIGURE 1 / FIGURA 1

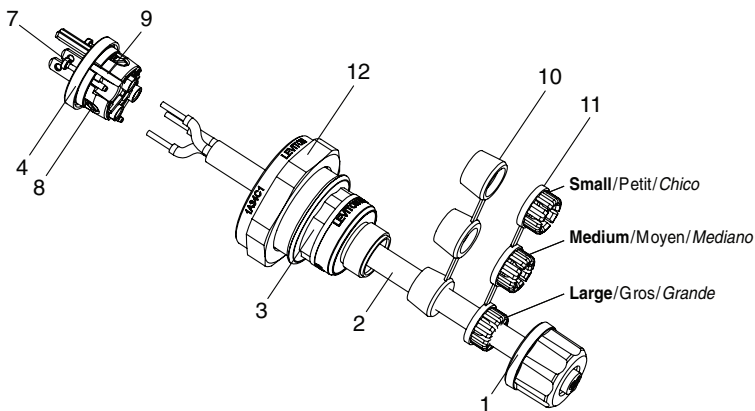


FIGURE 2 / FIGURA 2

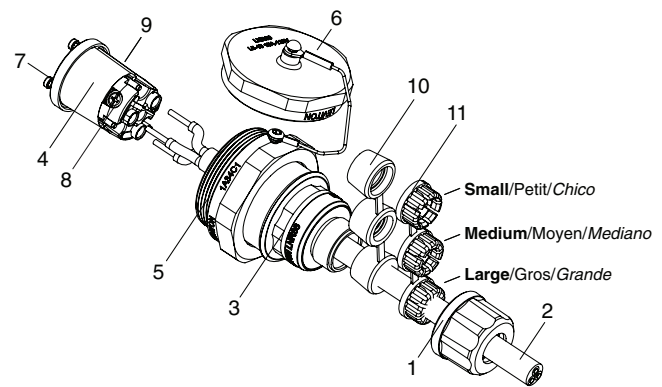
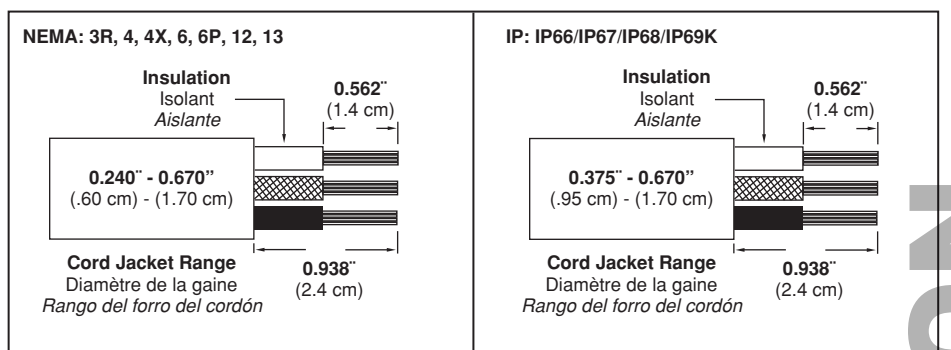


TABLE 1

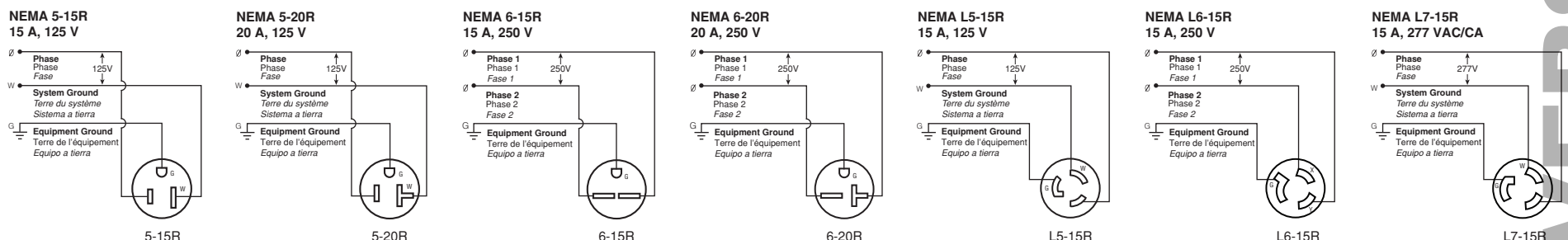
SELECTING STRAIN RELIEF WASHERS AND RUBBER BUSHINGS (To maintain oil and watertight ratings UL50E type cord used must include O (oil) or W (weather resistant) grades. Consult appropriate electrical codes and regulations.)			
Small	#1	18/3 AWG	S, SOO, SOOW, ST, STO, STOO, STOOO, SO, SOW
		16/3 AWG	S, ST, STO, STOO, STW, STOW, STOOO, SO, SOO, SOOW, SOW
Medium	#2	14/3 AWG	SJ, SJOO, SJO, SJOW, SJOOW, SJT, SJTO, SJTOO, SJTOW, SJTOOW
		12/3 AWG	ST, STO, STOO, STW, STOOO, STOW, S, SO, SOO, SOW, SOOW
Large	#3	10/3 AWG	ST, STO, STOO, STW, STOOO, STOW, S, SO, SOO, SOW, SOOW
		12/3 AWG	ST, STO, STOO, STW, STOOO, STOW, S, SO, SOO, SOW, SOOW

(These additional cord types must not exceed the maximum cord jacket insulation diameter range of 0.670" - ST, STO, STOO, STW, STOOO, STOW, S, SO, SOO, SOW, SOOW) 0.580"-0.670" (1.47 cm-1.70 cm) OD CABLE RANGE

FIGURE 3 / FIGURA 3



WIRING DIAGRAMS/ SCHÉMAS DE CÂBLAGE/ DIAGRAMAS DE CABLEADO



FOR CANADA ONLY

For warranty information and/or product returns, residents of Canada should contact Leviton in writing at Leviton Manufacturing of Canada Ltd to the attention of the Quality Assurance Department, 165 Hymus Blvd, Pointe-Claire (Quebec), Canada H9R 1E9 or by telephone at 1 800 405-5320.

LIMITED LIFETIME WARRANTY AND EXCLUSIONS

Leviton warrants to the original consumer purchaser and not for the benefit of anyone else that this product at the time of its sale by Leviton is free of defects in materials and workmanship under normal and proper use during the lifetime of the product. Leviton's only obligation is to correct such defects by repair or replacement, at its option. For details visit www.leviton.com or call 1-800-824-3005. This warranty excludes and there is disclaimed liability for labor for removal of this product or re-installation. This warranty is void if this product is installed improperly or in an improper environment, overloaded, misused, opened, abused, or altered in any manner, or is not used under normal operating conditions or not in accordance with any labels or instructions. **There are no other or implied warranties of any kind, including merchantability and fitness for a particular purpose. Leviton is not liable for incidental, indirect, special, or consequential damages, including without limitation, damage to, or loss of use of, any equipment, lost sales or profits or delay or failure to perform this warranty obligation.** The remedies provided herein are the exclusive remedies under this warranty, whether based on contract, tort or otherwise.

