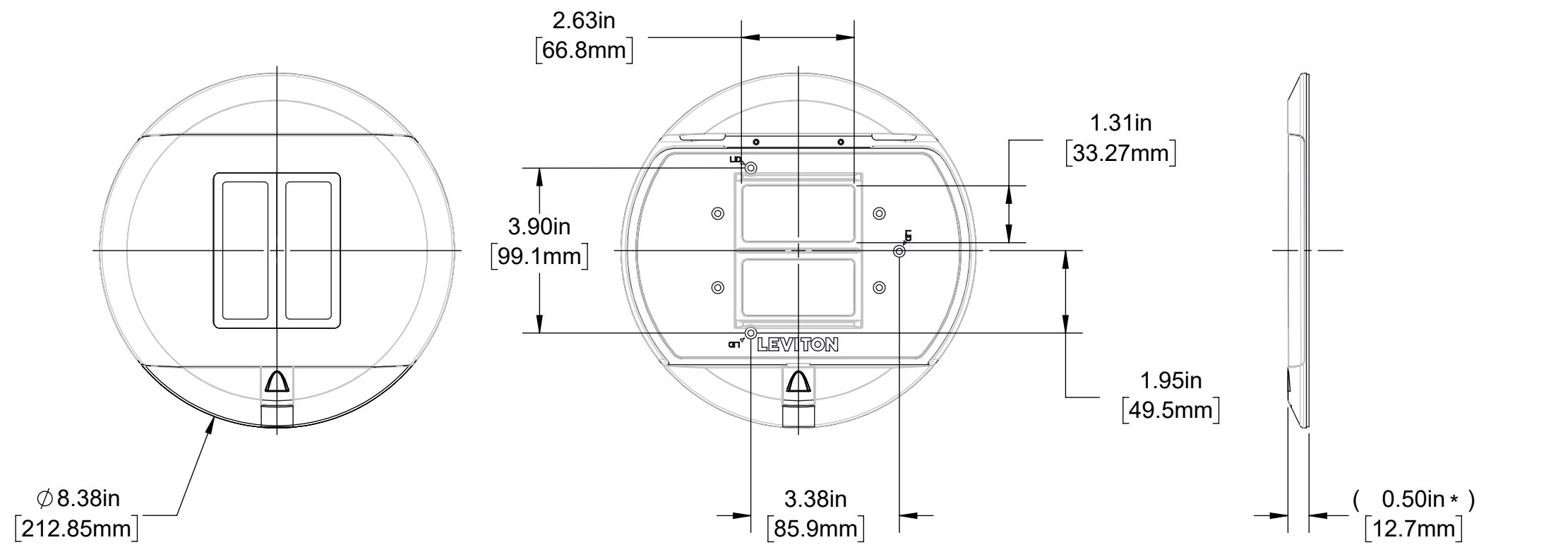


4 3 2 1



NOTE: ABOVE VIEW DENOTES ELECTRICAL / RECEPTICAL OPENINGS. EXTERIOR LID ASSEMBLY REMOVED FOR CLARITY.

( 0.50in \* )  
[12.7mm]  
\* PLATE HEIGHT AFTER INSTALLATION IS APPROXIMATELY .48 INCHES [12.2mm]

CATALOG # PT526

"DOOR WITHIN DOOR" COVER PLATE FOR USE WITH LEVITON 5" POKE THROUGH FLOOR BOX CATALOG # PT500 ONLY. COVER PLATE INCLUDES 2 FLIP LIDS THAT FOLD INTO THE MAIN LID

UNLESS OTHERWISE SPECIFIED: DO NOT SCALE DRAWING. ALL DIMENSIONS ARE IN INCHES. ALL ANGLES ARE IN DEGREES.		<b>LEVITON</b>	
TOLERANCES		TITLE: PT526 FLOOR BOX COVER DOOR-IN-DOOR CATALOG	
INCH .XX ± .01 .XXX ± .005	METRIC .X ± .2 mm .XX ± .1 mm	DWG NO. CATSTD-PT526-00X-D01	
ANGLES: ± 1/2°		SIZE	SCALE:1:1
THIRD ANGLE PROJECTION		SHEET 1 OF 1	
ALL PRINTED COPIES ARE UNCONTROLLED		REV 1	
		Copyright 2020. Unpublished. All Rights Reserved.	

4 3 2 1

B

B

A

A