

4

3

2

1

B

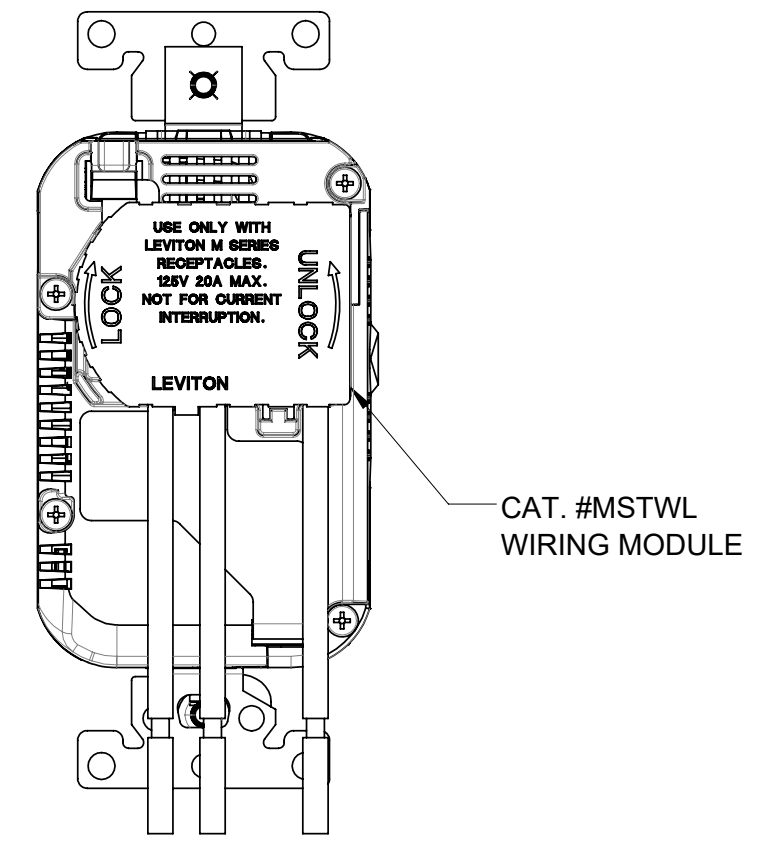
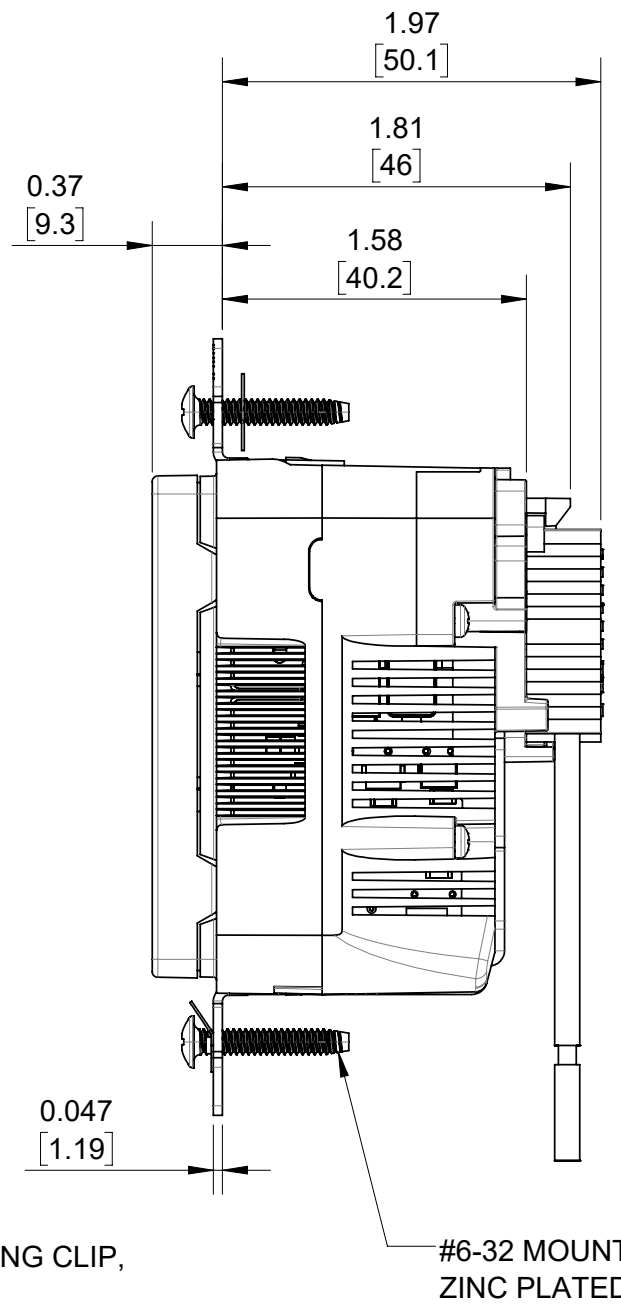
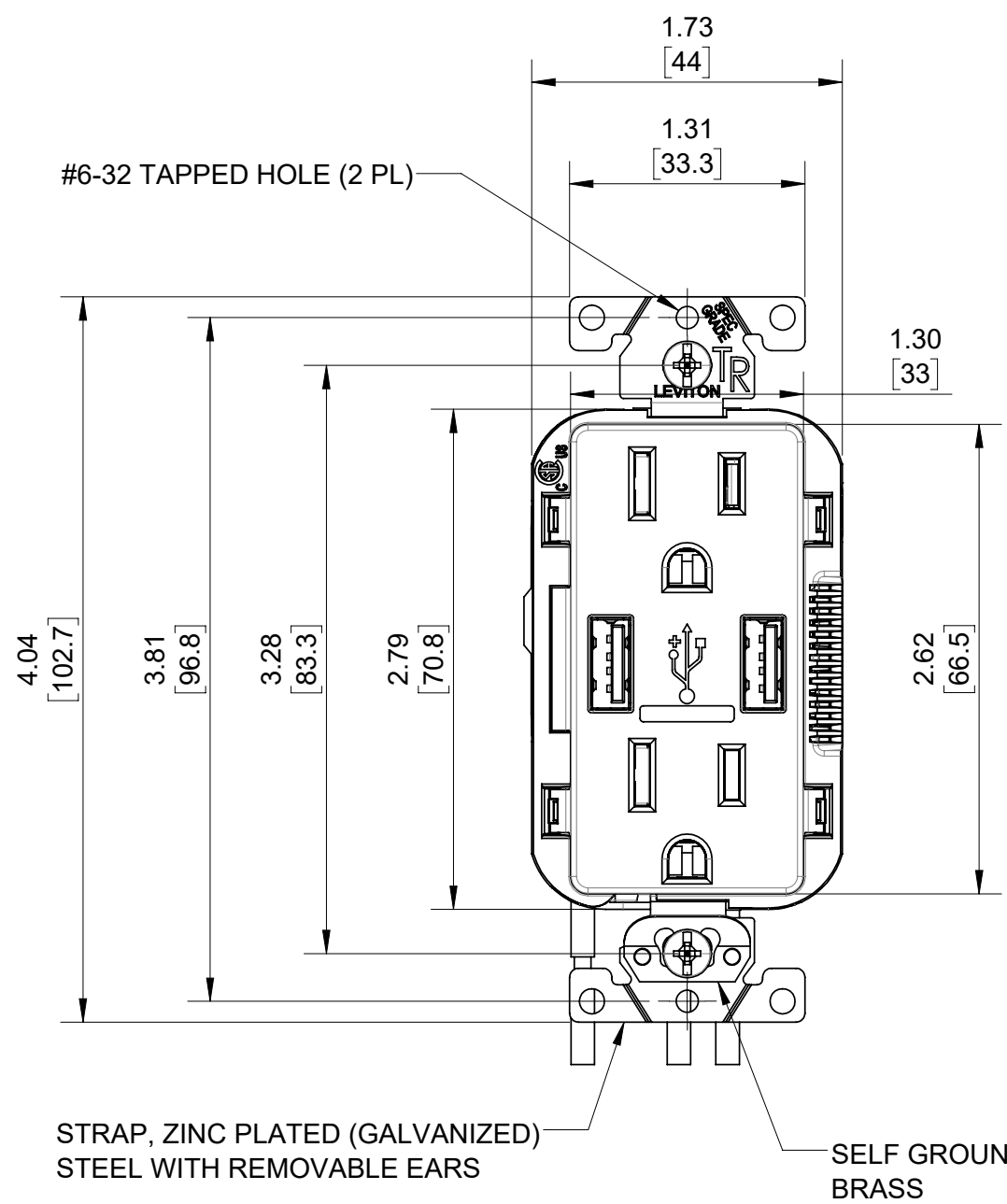
B

A

A

A

A



NOTES:

1. UPPER DIMENSIONS ARE IN INCHES. LOWER DIMENSIONS ARE IN MILLIMETERS.
2. RECEPTACLE RATING: 15A - 125V AC SPEC GRADE.
3. USB RECEPTACLE WITH (2) TYPE A PORTS, 5 VDC, 3.6 A (COMBINED TOTAL).
4. USE ONLY WITH CAT. #MSTWL LEV-LOK RECEPTACLE WIRING MODULE.
5. SEE CATSTD-M56AA-000-D01 DRAWING FOR RECEPTACLE LESS WIRING MODULE.

UNLESS OTHERWISE SPECIFIED: DO NOT SCALE DRAWING. ALL DIMENSIONS ARE IN INCHES. ALL ANGLES ARE IN DEGREES.		LEVITON®		
TOLERANCES		TITLE: LEV-LOK USB RECEPTACLE WITH WIRING MODULE		
INCH	METRIC	DWG NO. CATSTD-M56AA-000-D02		
.XX ± .01 .XXX ± .005	.X ± .2 mm .XX ± .1 mm			
ANGLES: ± 1/2°		SIZE	SCALE: 1:1	SHEET 1 OF 1
THIRD ANGLE PROJECTION		B	REV 1	
ALL PRINTED COPIES ARE UNCONTROLLED		Copyright 2019. Unpublished. All Rights Reserved.		

4

3

2

1