

CATALOG # 15W47-IN

WETGUARD CONNECTOR MODULE,
15 AMP, 125 VOLT, NEMA 5-15R,
2 POLE, 3 WIRE, REPLACEMENT
INTERIOR for STRAIGHT BLADE
CONNECTOR, FOR USE WITH
WETGUARD DEVICE ONLY

UNLESS OTHERWISE SPECIFIED:
DO NOT SCALE DRAWING.
ALL DIMENSIONS ARE IN INCHES.
ALL ANGLES ARE IN DEGREES.

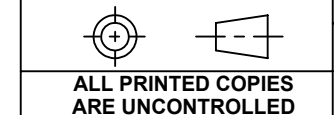
LEVITON

TOLERANCES	
INCH	METRIC
.XX ± .01	.X ± .2 mm
.XXX ± .005	.XX ± .1 mm

TITLE:
**15W47-IN CONNECTOR NEMA
5-15 WETGUARD CATALOG DWG**

ANGLES: ± 1/2°
THIRD ANGLE PROJECTION

DWG NO.
CATSTD-15W47-0IN-D01



SIZE B	SCALE:2:1	SHEET 1 OF 1	REV 1
Copyright 2019. Unpublished. All Rights Reserved.			

ALL PRINTED COPIES
ARE UNCONTROLLED