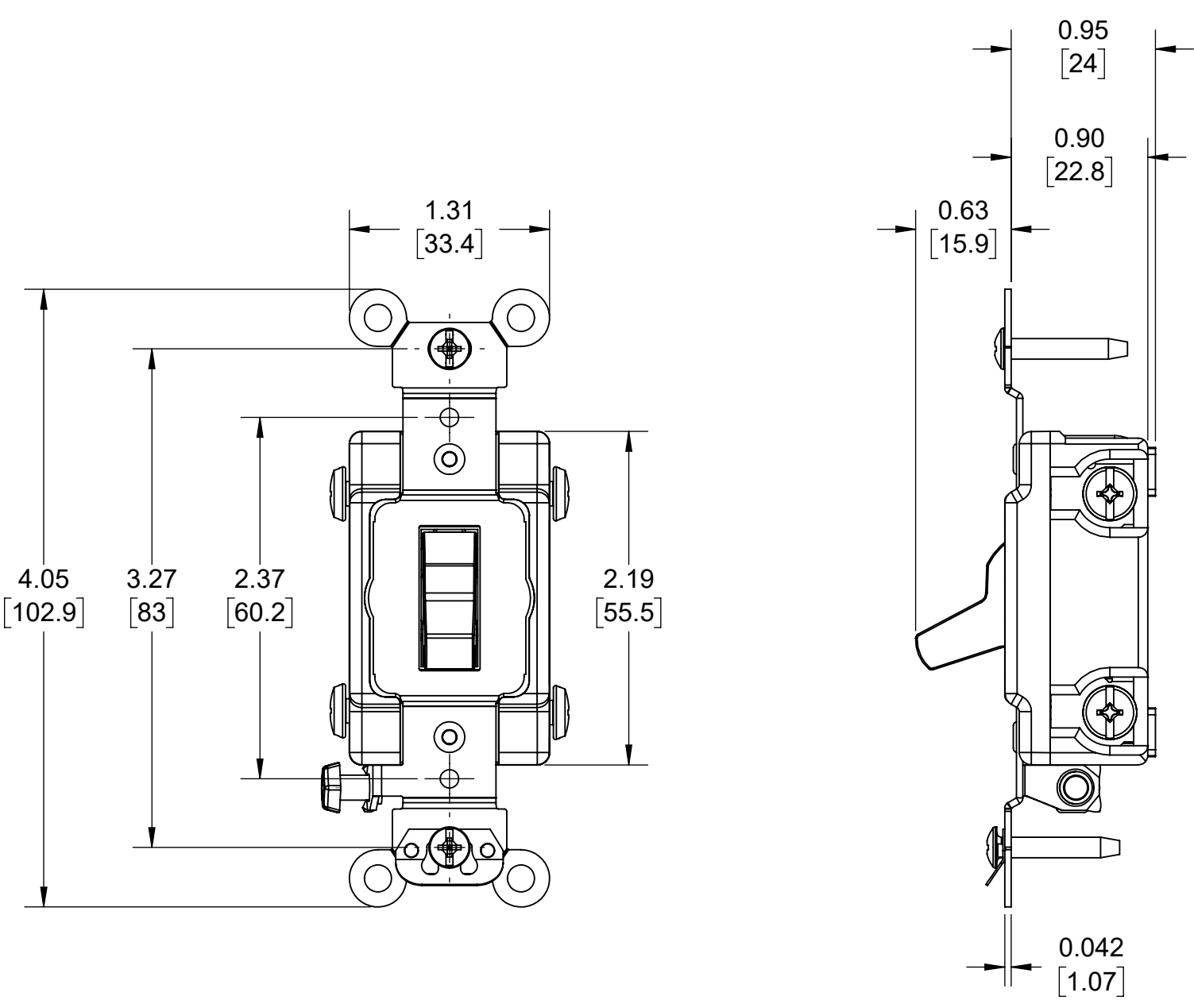


4 3 2 1



CATALOG #1224
STANDARD TOGGLE
INDUSTRIAL GRADE
4-WAY AC QUIET SWITCH

UPPER VALUES = INCHES
LOWER VALUES = MM

UNLESS OTHERWISE SPECIFIED: DO NOT SCALE DRAWING. ALL DIMENSIONS ARE IN INCHES. ALL ANGLES ARE IN DEGREES.		LEVITON®		
TOLERANCES		TITLE: TOGGLE SWITCH, 4-WAY CATALOG DRAWING		
INCH	METRIC	DWG NO. CATSTD-01224-000-D01		
.XX ± .01 .XXX ± .005	.X ± .2 mm .XX ± .1 mm			
ANGLES: ± 1/2°		SIZE	SCALE: 1:1	SHEET 1 OF 1
THIRD ANGLE PROJECTION		B	Copyright 2019. Unpublished. All Rights Reserved.	REV 1
ALL PRINTED COPIES ARE UNCONTROLLED				

4 3 2 1