

# The Leviton Load Center Meter Main for Canadian Market

**UG/OH Service Entrance  
with Distribution Section  
and Feed-thru Lugs**

## APPLICATION

Leviton Load Center Meter Main Panels combine the Meter and Main Breaker into one easy-to-install unit. Each Meter Main includes 8 spaces to enable easy wiring of outdoor circuits.

## FEATURES AND BENEFITS

- NEMA 3R
- 22kA Interrupt Rating
- In Compliance with CSA Std. C22.2 No.29, 94.2, 0.19 and 115 and Standards UL 50, UL 50E, UL 67
- Powder Coated

**FASTEST INSTALLATION** – Wire the entire panel without a single circuit breaker in place. At final installation, simply plug on the breaker.

**INTUITIVE** – Circuit Breakers feature color indicators in the handle for operational status at-a-glance

**SPACIOUS** – Ample room for hands to move and work freely



Cat. No. LS820

## Leviton Canada

165 Hymus Boulevard, Pointe Claire, Quebec H9R 1E9 Tel: 1-800-469-7890  
Tech Line: 1-800-405-5320 Fax: 1-800-563-1853 [www.leviton.com](http://www.leviton.com)  
For 24/7 product support visit [www.leviton.com/support](http://www.leviton.com/support)

THE LEVITON LOAD CENTER METER MAIN

Amp Rating	# of Spaces/Circuits	Catalog Number	Bypass	Cover
100	8	LS810-BRC	None	Ring-Type
150	8	LS815-BRC	None	Ring-Type
200	8	LS820-BRC	None	Ring-Type

**Warranty:** 10-Year Limited

**Short Circuit Current Rating:** 22 KA

**Spaces/Circuits: 8/8**

**Type:** Outdoor

Type of Load Center: Meter Main

**Voltage:** 120/240 VAC

**Busbar rating (all panels):** 225A

**For Overhead and Underground applications**

**Meterbase neutral connection:** Isolated

**Screw type meter ring:** Included

LS810-BRC, LS815-BRC, LS820-BRC

### Meter Socket Over/Under Construction – 100, 150 & 200

### Ampere, Ring-Type, No Bypass

**Dimensions:** 37.11" H x 16.47" W x 5.2" D

**CSA Std. C22.2 No.29:** Yes

**CSA Std. C22.2 No.94.2:** Yes

**CSA Std. C22.2 No.0.19:** Yes

**CSA Std. C22.2 No.115:** Yes

**UL 50:** Yes

**UL 50E:** Yes

**UL 67:** Yes

**UL 869A:** Yes

**Busbar Material:** Copper, Bright Tin-Plated

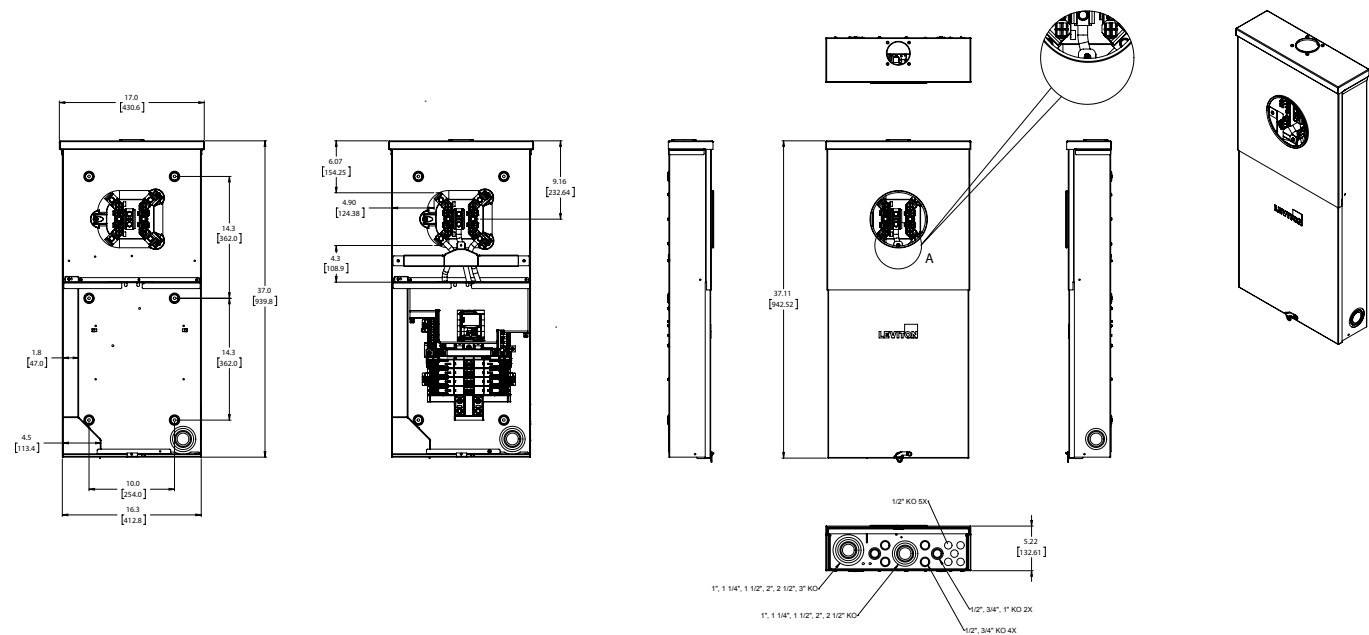
**Enclosure Material:** Galvanized Steel, Gray Baked Enamel

**Ground Connection:** 4 AWG - 2/0 AWG Cu/Al

**Material:** Galvanized Steel

**Supply Connections:** 6 AWG – 350 MCM

**Weight:** 56.8 lbs



NOTES:  
1. DIMENSIONS ARE INCHES/MM

165 Hymus Boulevard, Pointe Claire, Quebec H9R 1E9 Tel: 1-800-469-7890

Tech Line: 1-800-405-5320 Fax: 1-800-563-1853 [www.leviton.com](http://www.leviton.com)

For 24/7 product support visit [www.leviton.com/support](http://www.leviton.com/support)

Visit our Website at: [www.leviton.com/loadcenter](http://www.leviton.com/loadcenter)

© 2026 Leviton Manufacturing Co., Inc. All rights reserved. All trademarks are the property of their respective owners.

GR-062222A-dp-PC-A  
Rev.01262026