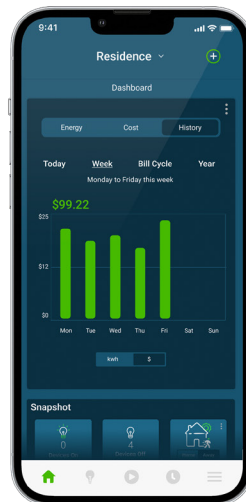




# The Leviton Load Center

The Future Made Current



THE FUTURE IS ON®

**LEVITON**®



# Future-Forward Residential Power Distribution

Take power to new heights with the award-winning Leviton Load Center – an industry-leader in intelligent circuit breaker systems. With optional smart circuit breakers and current transformers (CTs), users can get insights on energy usage and control their panel like never before.



# A Complete Line of Load Center Options to Meet Every Need



Leviton Load Centers come in a variety of options to suit any application. Choose from a full line of load centers for the flexibility and performance you expect.

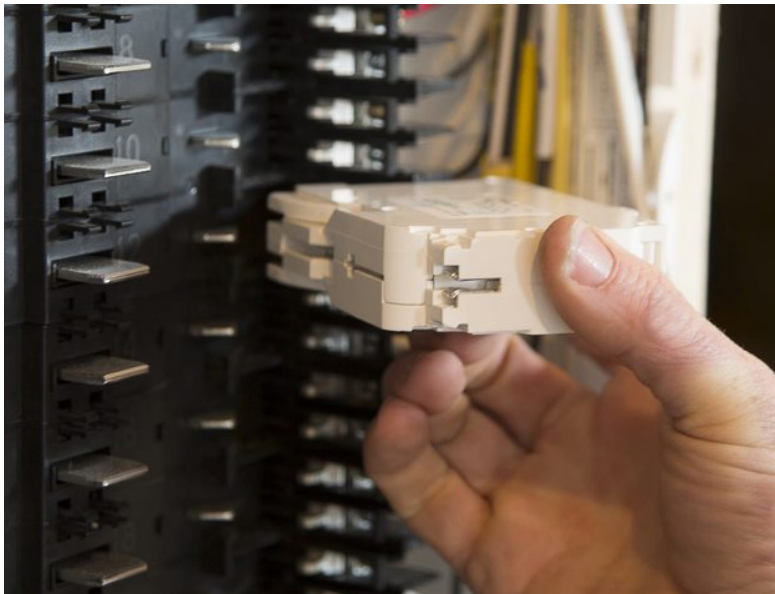
# Faster Installation

Wire the entire panel at rough-in, without a single circuit breaker present. The Leviton Load Center's all plug-on design<sup>1</sup> increases job site efficiency and provides ample room for hands to move and work freely.



I liked that I have **a lot of room to work**, and I'm free to land the wires how I want... it just gives me more options.”

- Jason Monforte, A-Perfect Goldman Electric



## Flexibility for Any Application

With Leviton's all plug-on design, breakers are easy to snap in and out.



## Ideal for Any Location

The Leviton Load Center integrates easily into any setting. With its attractive enclosure, the unit blends seamlessly into the space. The cover can be painted to match a garage interior, hallway, kitchen, or basement for a heightened aesthetic. By choosing the optional observation window, users can view load center activity without having to open the door or touch any part of the unit itself.

# Safety Priority One

## Superior GFCI/AFCI Protection

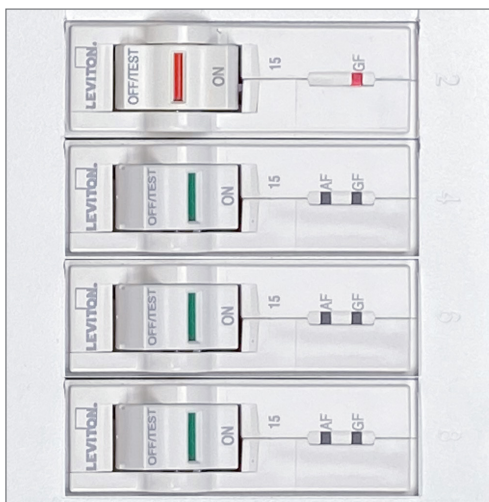
Leviton GFCI, AFCI and Dual Function circuit breakers feature our patented reset lockout and will not reset if ground- or arc-fault protection is compromised<sup>2</sup>.

## Why Risk Safety?

Other manufacturers may allow users to reset circuit breakers and unknowingly **NOT** be protected from shock or fire hazards.

## LED Diagnostics

Line-side powered LEDs remain lit, even when a circuit breaker is tripped, for easy identification of the type of fault (AF/GF).



## Surge Protection

Our plug-on surge protective device is designed for easy in-panel installation and provides effective surge protection for the entire home. Featuring (2) 1-pole circuit breakers with separate operating handles, there's no loss of space inside the panel. Line-side power ensures surge protection continues, even after a breaker is OFF or tripped.



The new Leviton Load Center makes it **very easy** for us and homeowners **to detect a tripped breaker** and know whether it is an arc-fault or ground-fault issue.”- *Corey Prehoda, Barlow Electric*





# Industry-Leading **Intelligent** Residential Circuit Breaker System

## Energy Usage

Do you know how much of your energy comes from the grid vs solar, generator, or battery? View real-time energy production and consumption trends over time on the My Leviton app to find out.

## Remote Notifications

With smart circuit breakers, you'll get notified if your freezer, sump pump, or any smart circuit trips - whether you're away for the day or on vacation for a week.

Anomaly detection alerts you if a circuit is drawing power continuously for an unusual length of time.

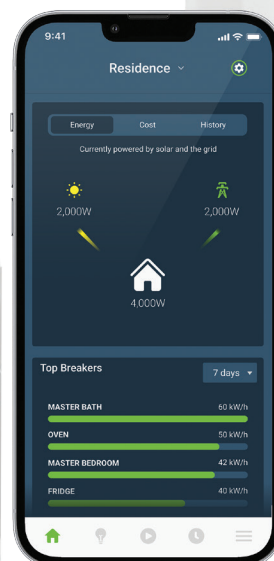
## Monitoring and Control

Check your refrigerator - or any smart circuit's status - in real time. 2nd Gen Smart Circuit Breakers can be turned ON and OFF remotely or via a predefined schedule in the My Leviton app. Turn breakers on/off from anywhere and create custom breaker schedules to save energy.



The first time I saw the Leviton Load Center **I was amazed...**  
I couldn't stop looking at it."

- Gianni Simone, Cerrone Builders



\*Requires a Leviton Whole Home Energy Monitor





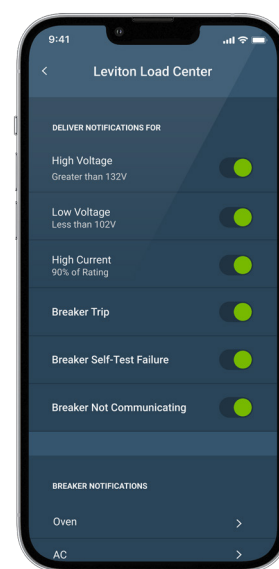
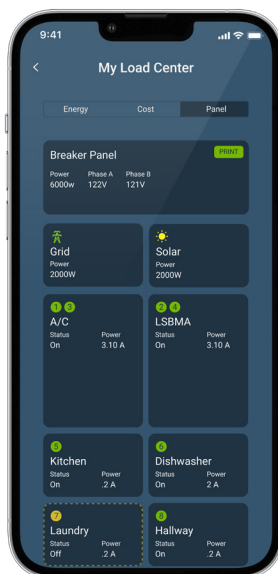
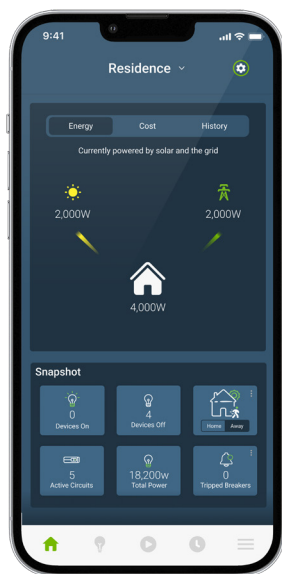
## What's a Smart Home Without a Smart Circuit Breaker?

Upgrade the entire panel or just one circuit at a time by installing smart circuit breakers. Using the intuitive My Leviton app, homeowners enjoy instant, easy access to essential elements of their load center's data via a smartphone, tablet or desktop.





Leviton’s system goes a step further by integrating **smart technology directly into the breaker box** and individual circuit breakers, giving homeowners far more information on the power management in their homes.” - *The Verge*<sup>3</sup>



### Energy Use

- View real-time energy consumption: total aggregate, individual circuit, or trends by day, week, month, and year
- Monitor alternate energy sources, such as solar, generator, battery, and wind power, too
- Calculate your approximate total energy cost per month

### Control

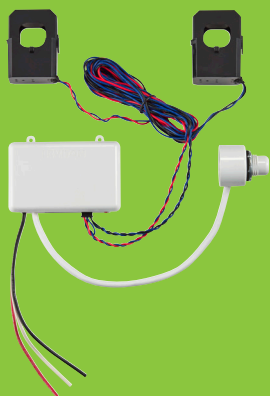
- Remotely turn circuit breakers ON or OFF, and schedule loads<sup>4</sup>
- Configure 2<sup>nd</sup> Gen Smart Circuit Breakers as Essential in the My Leviton app to remain powered when a backup generator is active. Any circuits designated as Nonessential will automatically shed when the Automatic Transfer Switch activates.<sup>3</sup>
- View system status in real time and detect if critical loads need to be addressed

### Alerts & Updates

- Know when and why a circuit breaker trips
- Be informed if a load is ON or not drawing power for an extended time
- Setup custom schedules for your smart circuit breakers by day/time to conserve energy

## How to Make a Leviton Load Center Smart

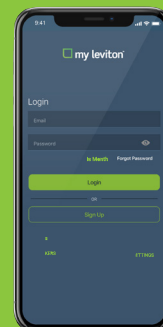
**1**  
Install The Whole Home Energy Monitor



**2**  
Add Smart Circuit Breakers



**3**  
Connect with the My Leviton app

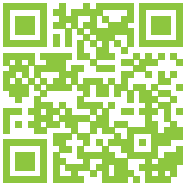


## Single App Control with My Leviton

An industry first smart circuit breakers, alternative power sources, and Decora®, the My Leviton app consolidates control of the Leviton Load Center's smart circuit breakers and the Decora Smart® Wi-Fi® product lines, enabling users to seamlessly control load center activities and home lighting from anywhere in the world using their smartphone or tablet.



- 
1. For applications up to 60A when using copper wire; or 50A when using aluminum wire
  2. The UL943 standard no longer exempts GFCI circuit breakers from detecting and warning when the trip solenoid and/or switching semiconductor fails in the "open" state, rendering the GFCI circuit breaker incapable of tripping in response to a fault condition, resulting in complete loss of GFCI protection. However, the effective date of this requirement is 8/11/24. Leviton GFCIs have always met the more stringent safety requirement.
  3. Requires 2nd Gen Smart Circuit Breakers for both essential and nonessential circuits and LWHEM integration with an Automatic Transfer Switch via the contact inputs
  4. Not applicable to Main breaker.



Scan QR code to view  
The Leviton Load Center video



**Leviton Manufacturing Co., Inc.**

Tech Line: 1-800-824-3005

Mon-Fri 8am-10pm EST, Saturday 9am-7pm EST, Sunday 9am-5pm EST

For 24/7 product support visit [www.leviton.com/support](http://www.leviton.com/support)

**Visit our Website at: [www.leviton.com/loadcenter](http://www.leviton.com/loadcenter)**

© 2023 Leviton Manufacturing Co., Inc. All rights reserved.  
All trademarks are the property of their respective owners.

