



# QUICKSHIP

---

**10-Day Shipping On Select  
Made To Order Products**



## POLICIES

---

- Lead times are estimated and exclude weekends and holidays.
- Applies to standard orders only; does not apply to large-scale orders. (Standalone fixtures ranging from 2ft to 8ft or continuous runs up to 50ft; 200ft limit per order).
- Ships within 10 days of receiving a clean purchase order (P.O.).
- Revisions to purchase orders may affect lead times.
- Available with 0-10V dimming in 120V-277V only.

**Note:** Custom colors, lengths, or mitered angles are not available. Shop drawings or engineering requirements are excluded from the QuickShip program and may result in longer lead times. For full product details, please refer to the product specification sheet. Specifications and dimensions are subject to change without notice. Consult the factory for more information.

## TABLE OF CONTENTS

---

### PRODUCT COMPARISON OVERVIEW [PG > 04](#)

#### SUSPENDED/SURFACE

COLLIN 2.25"	<a href="#">PG &gt; 06</a>
COLLIN 3.25"	<a href="#">PG &gt; 07</a>
KELSEY 1.25"	<a href="#">PG &gt; 08</a>
KELSEY 2.25"	<a href="#">PG &gt; 09</a>
KELSEY 3.25"	<a href="#">PG &gt; 10</a>
NOLAN 2.25"	<a href="#">PG &gt; 11</a>
NOLAN 3.25"	<a href="#">PG &gt; 12</a>
HAILEY 1.25"	<a href="#">PG &gt; 13</a>
HAILEY 2.25"	<a href="#">PG &gt; 14</a>
HAILEY 3.25"	<a href="#">PG &gt; 15</a>





#### COVE

ASHLEY	<a href="#">PG &gt; 15</a>
--------	----------------------------





#### RECESSED

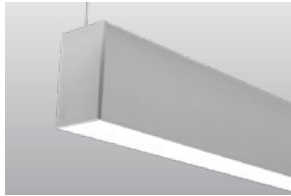
BW165R - 1.65" Recessed Flush	<a href="#">PG &gt; 16</a>
BW165R - 1.65" Regressed 1"	<a href="#">PG &gt; 17</a>
BW165R - 1.65" Perimeter Flush	<a href="#">PG &gt; 18</a>
BW165R - 1.65" Perimeter Regressed 3"	<a href="#">PG &gt; 19</a>
JAKE - 1.65" Recessed	<a href="#">PG &gt; 20</a>
JAKE - 2.25" Recessed	<a href="#">PG &gt; 21</a>
JAKE - 3.25" Recessed	<a href="#">PG &gt; 22</a>

## QuickShip Product Comparison Overview

	PROFILE (IN)	PROFILE SHAPE	OUTPUT	OUTPUT TYPE	OPTICS & LENS TYPE	MOUNTING
<b>SUSPENDED/SURFACE LINEAR</b>						
 <b>COLLIN</b>	2.25 3.25	Rectangle	481-987 lm/ft	Direct/Indirect	Frosted White	Cable Suspended, Surface Mount
 <b>KELSEY</b>	1.25 2.25 3.25	Square	481-987 lm/ft	Direct	Frosted White	Cable Suspended, Surface Mount
 <b>NOLAN</b>	2.25 3.25	Square	314 -955 lm/ft	Direct	Frosted White	Cable Suspended, Surface Mount
 <b>HAILEY</b>	1.25 2.25 3.25	Circular	283-565 lm/ft	Direct	Frosted White	Cable Suspended

## QuickShip Product Comparison Overview

	PROFILE (IN)	PROFILE SHAPE	OUTPUT	OUTPUT TYPE	OPTICS & LENS TYPE	MOUNTING
<b>COVE / LEDGE</b>						
 <b>ASHLEY</b>	7.00	Rectangle	510-980 lm/ft	Narrow Distribution, Wide Distribution	Standard, Diffuser/Refactor	Surface Mount
<b>RECESSED LINEAR</b>						
 <b>BW Recessed</b>	1.65	Rectangle	250-1000 lm/ft	Direct Flush or 1" Regressed	Harmonized Efficiency, Asymmetric, Frosted White or 2" Drop Lens	Recessed T-Grid, Gypsum Trim or Trimless
 <b>BW Perimeter Recessed</b>	1.65	Rectangle	250-1000 lm/ft	Direct Flush or 3" Regressed	Harmonized Efficiency, Asymmetric, Frosted White	Perimeter T-Grid, Gypsum Trim or Trimless
 <b>JAKE</b>	1.65 2.25 3.25 5.00	Square/ Rectangle	250-1000 lm/ft	Direct	Frosted White	Recessed, T-Grid or Perimeter

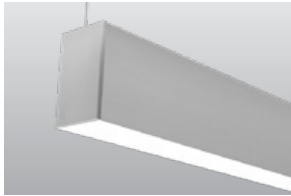


### Collin LED 2.25" Direct/Indirect

Example: COL-LED-225-1DR-1IN-SLO-SLO-30-8-MW-FW-FW-120-D1-CSS

CATALOG NUMBER	DESCRIPTION
COL-LED-225	2.25" Direct / Indirect
<b>LIGHT CONFIGURATION</b>	
-1DR-1IN	Direct / Indirect
-1DR-0IN	Direct / Non Lit Indirect
<b>LIGHT OUTPUT - DIRECT</b>	
-SLO	Standard Lumen Output
-HLO	High Lumen Output
-CLO	Custom Lumen Output
<b>LIGHT OUTPUT - INDIRECT:</b>	
blank	Non-Lit Indirect
-SLO	Standard Lumen Output
-HLO	High Lumen Output
<b>CCT/CRI</b>	
-30	3000K / 80CRI
-35	3500K / 80CRI
<b>NOMINAL LENGTH</b>	
-2	2ft
-3	3ft
-4	4ft
-6	6ft
-8	8ft
-CR_	Continuous Run - Note length in feet
<b>FIXTURE FINISH</b>	
-MW	Matte White, Powder Coat
<b>LENS / OPTICS - DIRECT</b>	
-FW	Frosted White Lens
<b>LENS / OPTICS - INDIRECT</b>	
blank	Non-Lit Indirect
-FW	Frosted White Lens
<b>VOLTAGE</b>	
-120	120V
-277	277V
<b>DIMMING</b>	
-D1	0-10V Dimming 1%
<b>MOUNTING</b>	
-CSS	Cable Suspended (See Cable Suspended Configurations Below)
<b>CABLE LENGTH:</b>	
-36	36"
<b>POWER CORD COLOR:</b>	
-W	White Cord
-G	Gray Cord
-B	Black Cord
<b>CANOPY OPTIONS:</b>	
-STND	Bracket Bar With 5" Round Canopy
-NC	No Canopy 1/4-20 Side Exit Cable Gripper
<b>CANOPY FINISH:</b>	
-MW	Matte White
-FB	Flat Black

Click or scan for the spec sheet, or visit our website for the latest specification information.

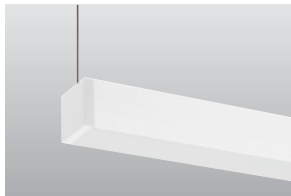


## Collin LED 3.25" Direct/Indirect

Example: COL-LED-325-1DR-1IN-SLO-SLO-30-8-MW-FW-FW-120-D1-CSS

CATALOG NUMBER	DESCRIPTION
COL-LED-325	3.25" Direct / Indirect
<b>LIGHT CONFIGURATION</b>	
-1DR-1IN	Direct / Indirect
-1DR-0IN	Direct / Non Lit Indirect
<b>LIGHT OUTPUT - DIRECT</b>	
-SLO	Standard Lumen Output
-HLO	High Lumen Output
-CLO	Custom Lumen Output
<b>LIGHT OUTPUT - INDIRECT:</b>	
blank	Non-Lit Indirect
-SLO	Standard Lumen Output
-HLO	High Lumen Output
<b>CCT/CRI</b>	
-30	3000K / 80CRI
-35	3500K / 80CRI
<b>NOMINAL LENGTH</b>	
-2	2ft
-3	3ft
-4	4ft
-6	6ft
-8	8ft
-CR_	Continuous Run - Note length in feet
<b>FIXTURE FINISH</b>	
-MW	Matte White, Powder Coat
<b>LENS / OPTICS - DIRECT</b>	
-FW	Frosted White Lens
<b>LENS / OPTICS - INDIRECT</b>	
blank	Non-Lit Indirect
-FW	Frosted White Lens
<b>VOLTAGE</b>	
-120	120V
-277	277V
<b>DIMMING</b>	
-D1	0-10V Dimming 1%
<b>MOUNTING</b>	
-CSS	Cable Suspended (See Cable Suspended Configurations Below)
-WM	Wall Mount
<b>CABLE LENGTH:</b>	
-36	36"
<b>POWER CORD COLOR:</b>	
-W	White Cord
-G	Gray Cord
-B	Black Cord
<b>CANOPY OPTIONS:</b>	
-STND	Bracket Bar With 5" Round Canopy
-NC	No Canopy 1/4-20 Side Exit Cable Gripper
<b>CANOPY FINISH:</b>	
-MW	Matte White
-FB	Flat Black

Click or scan for the spec sheet, or visit our website for the latest specification information.



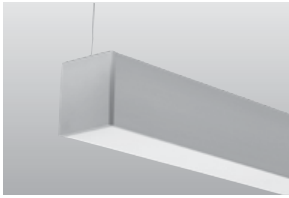
## KELSEY LED 1.25" Square Architectural

Example: KEL-LED-125-SLO-30-8-MW-FW-120-CSS-DR-36MW

	CATALOG NUMBER	DESCRIPTION
	KEL-LED-125	1.25" Square Architectural with Remote Driver
<b>LIGHT OUTPUT</b>	-SLO	Standard Lumen Output
	-HLO	High Lumen Output
	-CLO	Custom Lumen Output
<b>CCT/CRI</b>	-30	3000K / 80CRI
	-35	3500K / 80CRI
<b>NOMINAL LENGTH</b>	-2	2ft
	-3	3ft
	-4	4ft
	-6	6ft
	-8	8ft
	-CR_	Continuous Run - Note length in feet
<b>FIXTURE FINISH</b>	-MW	Matte White, Powder Coat
<b>LENS / OPTICS</b>	-FW	Frosted White Lens
<b>VOLTAGE</b>	-120	120V
	-277	277V
<b>DIMMING</b>	-D1	0-10V Dimming 1%
<b>MOUNTING OPTIONS</b>	-SM	Surface Mount
	-CSS-DR	Cable Suspended - Direct
	-CSS-IN	Cable Suspended - indirect
<b>CANOPY/CABLE LENGTH</b>	-36MW	5" Round Matte White Canopy, 36" Aircraft Cable
	-36FB	5" Round Flat Black Canopy, 36" Aircraft Cable
	-36MS	5" Round Matte Silver Canopy, 36" Aircraft Cable

Click or scan for the spec sheet, or visit our website for the latest specification information.



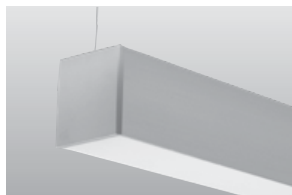


## KELSEY LED 2.25" Square Architectural

Example: KEL-LED-225-IB-SLO-30-8-MW-FW-120-CSS-DR-36MW

CATALOG NUMBER	DESCRIPTION	
KEL-LED-225-IB	2.25" Square Architectural with Integral Driver	
<b>LIGHT OUTPUT</b>	-SLO	Standard Lumen Output
	-HLO	High Lumen Output
	-CLO	Custom Lumen Output
<b>CCT/CRI</b>	-30	3000K / 80CRI
	-35	3500K / 80CRI
<b>NOMINAL LENGTH</b>	-2	2ft
	-3	3ft
	-4	4ft
	-6	6ft
	-8	8ft
	-CR_	Continuous Run - Note length in feet
<b>FIXTURE FINISH</b>	-MW	Matte White, Powder Coat
<b>LENS / OPTICS</b>	-FW	Frosted White Lens
<b>VOLTAGE</b>	-120	120V
	-277	277V
<b>DIMMING</b>	-D1	0-10V Dimming 1%
<b>MOUNTING OPTIONS</b>	-SM	Surface Mount
	-CSS-DR	Cable Suspended - Direct
	-CSS-IN	Cable Suspended - indirect
<b>CANOPY/CABLE LENGTH</b>	-36MW	5" Round Matte White Canopy, 36" Aircraft Cable
	-36FB	5" Round Flat Black Canopy, 36" Aircraft Cable
	-36MS	5" Round Matte Silver Canopy, 36" Aircraft Cable

Click or scan for the spec sheet, or visit our website for the latest specification information.

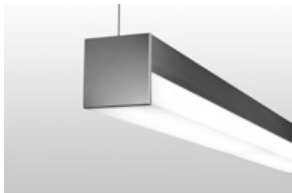


### KELSEY LED 3.25" Square Architectural

Example: KEL-LED-325-SLO-30-8-MW-FW-120-CSS-DR-36MW

CATALOG NUMBER	DESCRIPTION	
KEL-LED-325	3.25" Square Architectural	
<b>LIGHT OUTPUT</b>	-SLO	Standard Lumen Output
	-HLO	High Lumen Output
	-CLO	Custom Lumen Output
<b>CCT/CRI</b>	-30	3000K / 80CRI
	-35	3500K / 80CRI
<b>NOMINAL LENGTH</b>	-2	2ft
	-3	3ft
	-4	4ft
	-6	6ft
	-8	8ft
	-CR_	Continuous Run - Note length in feet
<b>FIXTURE FINISH</b>	-MW	Matte White, Powder Coat
<b>LENS / OPTICS</b>	-FW	Frosted White Lens
<b>VOLTAGE</b>	-120	120V
	-277	277V
<b>DIMMING</b>	-D1	0-10V Dimming 1%
<b>MOUNTING OPTIONS</b>	-SM	Surface Mount
	-CSS-DR	Cable Suspended - Direct
	-CSS-IN	Cable Suspended - indirect
<b>CANOPY/CABLE LENGTH</b>	-36MW	5" Round Matte White Canopy, 36" Aircraft Cable
	-36FB	5" Round Flat Black Canopy, 36" Aircraft Cable
	-36MS	5" Round Matte Silver Canopy, 36" Aircraft Cable

Click or scan for the spec sheet, or visit our website for the latest specification information.

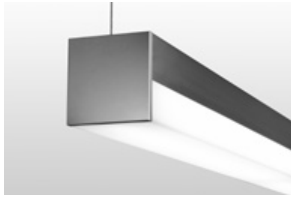


### NOLAN LED 2.25" Precision-Edged Luminaire

Example: NOL-LED-225-SLO-30-8-MW-FW-120-CSS-DR-36MW

	CATALOG NUMBER	DESCRIPTION
	<b>NOL-LED-225</b>	2.25" Precision-Edged Luminaire
<b>LIGHT OUTPUT</b>	<b>-SLO</b>	Standard Lumen Output
	<b>-HLO</b>	High Lumen Output
	<b>-CLO</b>	Custom Lumen Output
<b>CCT/CRI</b>	<b>-30</b>	3000K / 80CRI
	<b>-35</b>	3500K / 80CRI
<b>NOMINAL LENGTH</b>	<b>-2</b>	2ft
	<b>-3</b>	3ft
	<b>-4</b>	4ft
	<b>-6</b>	6ft
	<b>-8</b>	8ft
	<b>-CR_</b>	Continuous Run - Note length in feet
<b>FIXTURE FINISH</b>	<b>-MW</b>	Matte White, Powder Coat
<b>LENS / OPTICS</b>	<b>-FW</b>	Frosted White Lens
<b>VOLTAGE</b>	<b>-120</b>	120V
	<b>-277</b>	277V
<b>DIMMING</b>	<b>-D1</b>	0-10V Dimming 1%
<b>MOUNTING OPTIONS</b>	<b>-SM</b>	Surface Mount
	<b>-CSS-DR</b>	Cable Suspended - Direct
	<b>-CSS-IN</b>	Cable Suspended - indirect
<b>CANOPY/CABLE LENGTH</b>	<b>-36MW</b>	5" Round Matte White Canopy, 36" Aircraft Cable
	<b>-36FB</b>	5" Round Flat Black Canopy, 36" Aircraft Cable
	<b>-36MS</b>	5" Round Matte Silver Canopy, 36" Aircraft Cable

Click or scan for the spec sheet, or visit our website for the latest specification information.

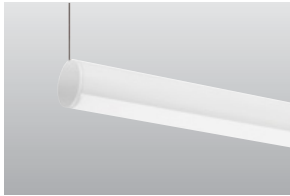


## NOLAN LED 3.25" Precision-Edged Luminaire

Example: NOL-LED-325-SLO-30-8-MW-FW-120-CSS-DR-36MW

CATALOG NUMBER	DESCRIPTION	
NOL-LED-325	2.25" Precision-Edged Luminaire	
<b>LIGHT OUTPUT</b>	-SLO	Standard Lumen Output
	-HLO	High Lumen Output
	-CLO	Custom Lumen Output
<b>CCT/CRI</b>	-30	3000K / 80CRI
	-35	3500K / 80CRI
<b>NOMINAL LENGTH</b>	-2	2ft
	-3	3ft
	-4	4ft
	-6	6ft
	-8	8ft
	-CR_	Continuous Run - Note length in feet
<b>FIXTURE FINISH</b>	-MW	Matte White, Powder Coat
<b>LENS / OPTICS</b>	-FW	Frosted White Lens
<b>VOLTAGE</b>	-120	120V
	-277	277V
<b>DIMMING</b>	-D1	0-10V Dimming 1%
<b>MOUNTING OPTIONS</b>	-SM	Surface Mount
	-CSS-DR	Cable Suspended - Direct
	-CSS-IN	Cable Suspended - indirect
<b>CANOPY/CABLE LENGTH</b>	-36MW	5" Round Matte White Canopy, 36" Aircraft Cable
	-36FB	5" Round Flat Black Canopy, 36" Aircraft Cable
	-36MS	5" Round Matte Silver Canopy, 36" Aircraft Cable

Click or scan for the spec sheet, or visit our website for the latest specification information.

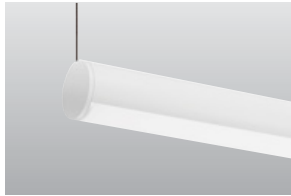


## HAILEY LED 1.25" Round Architectural

Example: HAI-LED-125-SLO-30-8-MW-FW-120-CSS-DR-36MW

	CATALOG NUMBER	DESCRIPTION
	<b>HAI-LED-125</b>	1.25" Round Architectural with Remote Driver
<b>LIGHT OUTPUT</b>	<b>-SLO</b>	Standard Lumen Output
	<b>-HLO</b>	High Lumen Output
	<b>-CLO</b>	Custom Lumen Output
<b>CCT/CRI</b>	<b>-30</b>	3000K / 80CRI
	<b>-35</b>	3500K / 80CRI
<b>NOMINAL LENGTH</b>	<b>-2</b>	2ft
	<b>-3</b>	3ft
	<b>-4</b>	4ft
	<b>-6</b>	6ft
	<b>-8</b>	8ft
	<b>-CR_</b>	Continuous Run - Note length in feet
<b>FIXTURE FINISH</b>	<b>-MW</b>	Matte White, Powder Coat
<b>LENS / OPTICS</b>	<b>-FW</b>	Frosted White Lens
<b>VOLTAGE</b>	<b>-120</b>	120V
	<b>-277</b>	277V
<b>DIMMING</b>	<b>-D1</b>	0-10V Dimming 1%
<b>MOUNTING OPTIONS</b>	<b>-CSS-DR</b>	Cable Suspended - Direct
	<b>-CSS-IN</b>	Cable Suspended - indirect
<b>CABLE LENGTH / CORD COLOR</b>	<b>-36-W</b>	36" Aircraft Cable with White Power Cord
	<b>-36-B</b>	36" Aircraft Cable with Black Power Cord
	<b>-36-G</b>	36" Aircraft Cable with Grey Power Cord
<b>CANOPY OPTION / FINISH</b>	<b>-STND-MW</b>	5" Round Matte White Canopy with Bracket Bar
	<b>-STND-SMT</b>	5" Round Silver Matte Textured Canopy with Bracket Bar

Click or scan for the spec sheet, or visit our website for the latest specification information.



## HAILEY LED 2.25" Round Architectural

Example: HAI-LED-225-IB-SLO-30-8-MW-FW-120-CSS-DR-36MW

	CATALOG NUMBER	DESCRIPTION
	<b>HAI-LED-225-IB</b>	2.25" Round Architectural with Integral Driver
<b>LIGHT OUTPUT</b>	<b>-SLO</b>	Standard Lumen Output
	<b>-HLO</b>	High Lumen Output
	<b>-CLO</b>	Custom Lumen Output
<b>CCT/CRI</b>	<b>-30</b>	3000K / 80CRI
	<b>-35</b>	3500K / 80CRI
<b>NOMINAL LENGTH</b>	<b>-2</b>	2ft
	<b>-3</b>	3ft
	<b>-4</b>	4ft
	<b>-6</b>	6ft
	<b>-8</b>	8ft
	<b>-CR_</b>	Continuous Run - Note length in feet
<b>FIXTURE FINISH</b>	<b>-MW</b>	Matte White, Powder Coat
<b>LENS / OPTICS</b>	<b>-FW</b>	Frosted White Lens
<b>VOLTAGE</b>	<b>-120</b>	120V
	<b>-277</b>	277V
<b>DIMMING</b>	<b>-D1</b>	0-10V Dimming 1%
<b>MOUNTING OPTIONS</b>	<b>-CSS-DR</b>	Cable Suspended - Direct
	<b>-CSS-IN</b>	Cable Suspended - indirect
<b>CABLE LENGTH / CORD COLOR</b>	<b>-36-W</b>	36" Aircraft Cable with White Power Cord
	<b>-36-B</b>	36" Aircraft Cable with Black Power Cord
	<b>-36-G</b>	36" Aircraft Cable with Grey Power Cord
<b>CANOPY OPTION / FINISH</b>	<b>-STND-MW</b>	5" Round Matte White Canopy with Bracket Bar
	<b>-STND-SMT</b>	5" Round Silver Matte Textured Canopy with Bracket Bar

Click or scan for the spec sheet, or visit our website for the latest specification information.

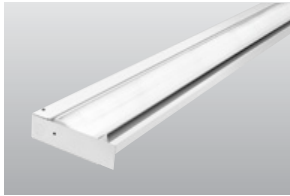


## HAILEY LED 3.25" Round Architectural - Cable Suspended

Example: HAI-LED-225-SLO-30-8-MW-FW-120-D1-CSS-DR-36-W-STND-MW

	CATALOG NUMBER	DESCRIPTION
	HAI-LED-325	3.25" Round Architectural with Integral Driver
<b>LIGHT OUTPUT</b>	-SLO	Standard Lumen Output
	-HLO	High Lumen Output
	-CLO	Custom Lumen Output
<b>CCT/CRI</b>	-30	3000K / 80CRI
	-35	3500K / 80CRI
<b>NOMINAL LENGTH</b>	-2	2ft
	-3	3ft
	-4	4ft
	-6	6ft
	-8	8ft
	-CR_	Continuous Run - Note length in feet
<b>FIXTURE FINISH</b>	-MW	Matte White, Powder Coat
<b>LENS / OPTICS</b>	-FW	Frosted White Lens
<b>VOLTAGE</b>	-120	120V
	-277	277V
<b>DIMMING</b>	-D1	0-10V Dimming 1%
<b>MOUNTING OPTIONS</b>	-CSS-DR	Cable Suspended - Direct
	-CSS-IN	Cable Suspended - indirect
<b>CABLE LENGTH / CORD COLOR</b>	-36-W	36" Aircraft Cable with White Power Cord
	-36-B	36" Aircraft Cable with Black Power Cord
	-36-G	36" Aircraft Cable with Grey Power Cord
<b>CANOPY OPTION / FINISH</b>	-STND-MW	5" Round Matte White Canopy with Bracket Bar
	-STND-SMT	5" Round Silver Matte Textured Canopy with Bracket Bar

Click or scan for the spec sheet, or visit our website for the latest specification information.



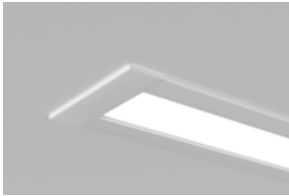
## ASHLEY LED Shadow-Free Cove Lighting

Example: ASH-LED-SLO-30-10-4-120-D1

CATALOG NUMBER	DESCRIPTION	
ASH-LED	Cove Lighting	
<b>LIGHT OUTPUT</b>	-SLO	Standard Lumen Output (4.4W/ft - 510lm/ft)
	-HLO	High Lumen Output (9W/ft - 980lm/ft)
	-CLO	Custom Lumen Output
<b>CCT/CRI</b>	-30	3000K / 80CRI
	-35	3500K / 80CRI
<b>OPTICS</b>	-10	Narrow Distribution
	-80	Wide Distribution
<b>NOMINAL LENGTH</b>	-2	2ft
	-3	3ft
	-4	4ft
	-CR_	Continuous Run - Note length in feet (Runs are made up of 4' nominal fixtures unless otherwise specified)
<b>VOLTAGE</b>	-120	120V
	-277	277V
<b>DIMMING</b>	-D1	0-10V Dimming 1%

Click or scan for the spec sheet, or visit our website for the latest specification information.



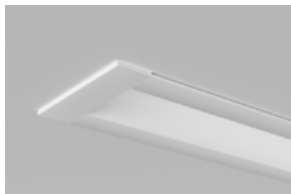


## Birchwood 1.65" Recessed Linear Flush

Example: BW165RF-TG09-L025-309-HE-10V1-UNV-MTGB

CATALOG NUMBER	DESCRIPTION
<b>BW165RF</b>	1.65" Profile - Recessed Flush
<b>LENGTH</b>	<b>__F__</b> Linear (specify feet)F(specify Inch) (ex: 02F00 = 02ft, 00in)
<b>FLANGE</b>	<b>GRID CEILING:</b>
	-TG09 T-Grid 9/16"
	-TG15 T-Grid 5/16"
	-TT09 Tegular 9/16"
	-TT15 Tegular 9/16"
	-TI09 Interlude 9/16"
	-TS09 Slot 9/16"
	<b>GYPSUM CEILING:</b>
	-TRMW 3/4" Trim Flange, Matte White
	-TLMI Trimless Mud-In Flange
<b>WATTAGE</b>	-L025 3W/ft
	-L050 5W/ft
	-L075 8W/ft
	-L100 10W/ft
<b>Voltage</b>	-309 3000K, 90CRI
	-359 3500K, 90CRI
<b>OPTICS/LENS</b>	-HE Harmonized Efficiency
	-FW Frosted White
	-DR Drop Lens
	-AS Asymmetric
<b>DIMMING</b>	-10V1 1% 0-10V
<b>VOLTAGE</b>	-UNV 120V-277V
<b>MOUNTING</b>	<b>GRID CEILING:</b>
	-MTGB Mounting Bracket
	<b>GYPSUM CEILING, TRIM FLANGE:</b>
	-MTRS Side Blocking
	-MTRO Overhead Bracket
	-MTRH Hanger Bracket
	<b>GYPSUM CEILING, MUD-IN TRIMLESS:</b>
	-MMIS Side Blocking

Click or scan for the spec sheet, or visit our website for the latest specification information.



## Birchwood 1.65" Recessed Linear Regressed 1"

Example: BW165R1-TG09-L025-309-HE-10V1-UNV-MTGB

CATALOG NUMBER	DESCRIPTION
<b>BW165R1</b>	1.65" Profile - Regressed 1"
<b>LENGTH</b>	___F___ Linear (specify feet)F(specify Inch) (ex: 02F00 = 02ft, 00in)
<b>FLANGE</b>	<b>GRID CEILING:</b> -TG09 T-Grid 9/16" -TG15 T-Grid 5/16" -TT09 Tegular 9/16" -TT15 Tegular 9/16" -TI09 Interlude 9/16" -TS09 Slot 9/16"  <b>GYPSUM CEILING:</b> -TRMW 3/4" Trim Flange, Matte White -TLMI Trimless Mud-In Flange
<b>WATTAGE</b>	-L025 3W/ft -L050 5W/ft -L075 8W/ft -L100 10W/ft
<b>CCT/CRI</b>	-309 3000K, 90CRI -359 3500K, 90CRI
<b>OPTICS/LENS</b>	-HE Harmonized Efficiency -FW Frosted White -AS Asymmetric
<b>DIMMING</b>	-10V1 1% 0-10V
<b>VOLTAGE</b>	-UNV 120V-277V
<b>MOUNTING</b>	<b>GRID CEILING:</b> -MTGB Mounting Bracket  <b>GYPSUM CEILING, TRIM FLANGE:</b> -MTRO Overhead Bracket -MTRH Hanger Bracket  <b>GYPSUM CEILING, MUD-IN TRIMLESS:</b> -MMIS Side Blocking

Click or scan for the spec sheet, or visit our website for the latest specification information.

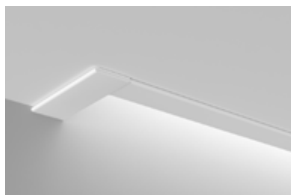


## Birchwood 1.65" Recessed Perimeter Flush

Example: BW165PF-TG09-L025-309-HE-10V1-UNV-MTGB

CATALOG NUMBER	DESCRIPTION
<b>BW165PF</b>	1.65" Profile - Recessed Perimeter Flush
<b>LENGTH</b>	<b>__F__</b> Linear (specify feet)F(specify Inch) (ex: 02F00 = 02ft, 00in)
<b>FLANGE</b>	<b>GRID CEILING:</b>
	-TG09 T-Grid 9/16"
	-TG15 T-Grid 5/16"
	-TT09 Tegular 9/16"
	-TT15 Tegular 9/16"
	-TI09 Interlude 9/16"
	-TS09 Slot 9/16"
	<b>GYPSUM CEILING:</b>
	-TRMW 3/4" Trim Flange, Matte White
	-TLMI Trimless Mud-In Flange
<b>CCT/CRI</b>	-309 3000K, 90CRI
	-359 3500K, 90CRI
<b>OPTICS/LENS</b>	-HE Harmonized Efficiency
	-FW Frosted White
	-AS Asymmetric
<b>DIMMING</b>	-10V1 1% 0-10V
<b>VOLTAGE</b>	-UNV 120V-277V
<b>MOUNTING</b>	<b>GRID CEILING:</b>
	-MTGB Mounting Bracket
	<b>GYPSUM CEILING, TRIM FLANGE:</b>
	-MTRS Side Blocking
	-MTRO Overhead Bracket
	-MTRH Hanger Bracket
	<b>GYPSUM CEILING, MUD-IN TRIMLESS:</b>
	-MMIS Side Blocking

Click or scan for the spec sheet, or visit our website for the latest specification information.

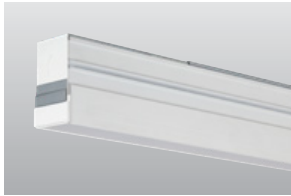


### Birchwood 1.65" Recessed Perimeter Regressed 3"

Example: BW165P3-TG09-L025-309-HE-10V1-UNV-MTGB

CATALOG NUMBER	DESCRIPTION
<b>BW165P3</b>	1.65" Profile - Recessed Perimeter Regressed 3"
<b>LENGTH</b> __F__	Linear (specify feet)F(specify Inch) (ex: 02F00 = 02ft, 00in)
<b>FLANGE</b>	<b>GRID CEILING:</b>
	-TG09 T-Grid 9/16"
	-TG15 T-Grid 5/16"
	-TT09 Tegular 9/16"
	-TT15 Tegular 9/16"
	-TI09 Interlude 9/16"
	-TS09 Slot 9/16"
	<b>GYPSON CEILING:</b>
	-TRMW 3/4" Trim Flange, Matte White
	-TLMI Trimless Mud-In Flange
<b>CCT/CRI</b>	-309 3000K, 90CRI
	-359 3500K, 90CRI
<b>OPTICS/LENS</b>	-HE Harmonized Efficiency
	-FW Frosted White
	-AS Asymmetric
<b>DIMMING</b>	-10V1 1% 0-10V
<b>VOLTAGE</b>	-UNV 120V-277V
<b>MOUNTING</b>	<b>GRID CEILING:</b>
	-MTGB Mounting Bracket
	<b>GYPSON CEILING, TRIM FLANGE:</b>
	-MTRO Overhead Bracket
	-MTRH Hanger Bracket
	<b>GYPSON CEILING, MUD-IN TRIMLESS:</b>
	-MMIS Side Blocking

Click or scan for the spec sheet, or visit our website for the latest specification information.

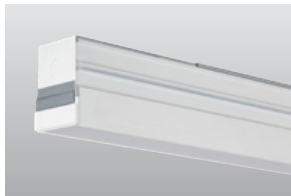


## JAKE LED 1.65" Recessed Linear LED

Example: JAK-LED-165-TR-SLO-30-8-HE-120-D1-MW-OHMB

CATALOG NUMBER	DESCRIPTION	
JAK-LED-165	1.65" Profile	
<b>Trim Style</b>	-TR	3/4" Flanged Trim
	-TL	Trimless Mud Flange, Mill Finish only)
<b>LIGHT OUTPUT</b>	-SLO	Standard Lumen Output
	-HLO	High Lumen Output
	-CLO	Custom Lumen Output
<b>CCT/CRI</b>	-30	3000K / 80CRI
	-35	3500K / 80CRI
<b>NOMINAL LENGTH</b>	-2	2ft
	-3	3ft
	-4	4ft
	-6	6ft
	-8	8ft
	-CR_	Continuous Run - Note length in feet (Runs are made up of 4' nominal fixtures unless otherwise specified)
<b>OPTICS/LENS</b>	-FW	Frosted White
<b>VOLTAGE</b>	-120	120V
	-277	277V
<b>DIMMING</b>	-D1	0-10V Dimming 1%
<b>TRIM FINISH</b>	blank	Mill Finish, Trimless Only
	-MW	Matte White, Trimmed
<b>MOUNTING OPTIONS</b>	-OHMB	Overhead Mounting Bracket
	-BF	Backer Flange
	-HB	Hanger Bracket

Click or scan for the spec sheet, or visit our website for the latest specification information.

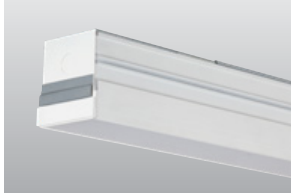


### JAKE LED 2.25" Recessed Linear LED

Example: JAK-LED-225-TR-SLO-30-8-HE-120-D1-MW-OHMB

CATALOG NUMBER	DESCRIPTION	
JAK-LED-225	2.25" Profile	
<b>Trim Style</b>	-TR	3/4" Flanged Trim
	-TL	Trimless Mud Flange, Mill Finish only)
<b>LIGHT OUTPUT</b>	-SLO	Standard Lumen Output
	-HLO	High Lumen Output
	-CLO	Custom Lumen Output
<b>CCT/CRI</b>	-30	3000K / 80CRI
	-35	3500K / 80CRI
<b>NOMINAL LENGTH</b>	-2	2ft
	-3	3ft
	-4	4ft
	-6	6ft
	-8	8ft
	-CR_	Continuous Run - Note length in feet (Runs are made up of 4' nominal fixtures unless otherwise specified)
<b>OPTICS/LENS</b>	-FW	Frosted White
<b>VOLTAGE</b>	-120	120V
	-277	277V
<b>DIMMING</b>	-D1	0-10V Dimming 1%
<b>TRIM FINISH</b>	blank	Mill Finish, Trimless Only
	-MW	Matte White, Trimmed
<b>MOUNTING OPTIONS</b>	-OHMB	Overhead Mounting Bracket
	-BF	Backer Flange
	-HB	Hanger Bracket

Click or scan for the spec sheet, or visit our website for the latest specification information.



## JAKE LED 3.25" Recessed Linear LED

Example: JAK-LED-325-TR-SLO-30-8-HE-120-D1-MW-OHMB

CATALOG NUMBER	DESCRIPTION	
JAK-LED-325	3.25" Profile	
<b>Trim Style</b>	-TR	3/4" Flanged Trim
	-TL	Trimless Mud Flange, Mill Finish only)
<b>LIGHT OUTPUT</b>	-SLO	Standard Lumen Output
	-HLO	High Lumen Output
	-CLO	Custom Lumen Output
<b>CCT/CRI</b>	-30	3000K / 80CRI
	-35	3500K / 80CRI
<b>NOMINAL LENGTH</b>	-2	2ft
	-3	3ft
	-4	4ft
	-6	6ft
	-8	8ft
	-CR_	Continuous Run - Note length in feet (Runs are made up of 4' nominal fixtures unless otherwise specified)
<b>OPTICS/LENS</b>	-FW	Frosted White
<b>VOLTAGE</b>	-120	120V
	-277	277V
<b>DIMMING</b>	-D1	0-10V Dimming 1%
<b>TRIM FINISH</b>	blank	Mill Finish, Trimless Only
	-MW	Matte White
<b>MOUNTING OPTIONS</b>	-OHMB	Overhead Mounting Bracket
	-BF	Backer Flange
	-HB	Hanger Bracket

Click or scan for the spec sheet, or visit our website for the latest specification information.

**Birchwood Lighting**

725 Landwehr Road  
Northbrook, IL 60062

Tel: 714 550-7118  
Fax: 847 559-5505

[www.birchwoodlighting.com](http://www.birchwoodlighting.com)

A Leviton Company  
[www.leviton.com](http://www.leviton.com)

Printed in the U.S.A  
© Copyright 2025. Birchwood Lighting. All Rights Reserved.

Birchwood Lighting reserves the right to discontinue products or change the technical specifications of its products at any time without notice. Select products in this catalog have patent protection or patents pending.