

# decora edge™

Classic Decora®. Faster and Easier to Install.

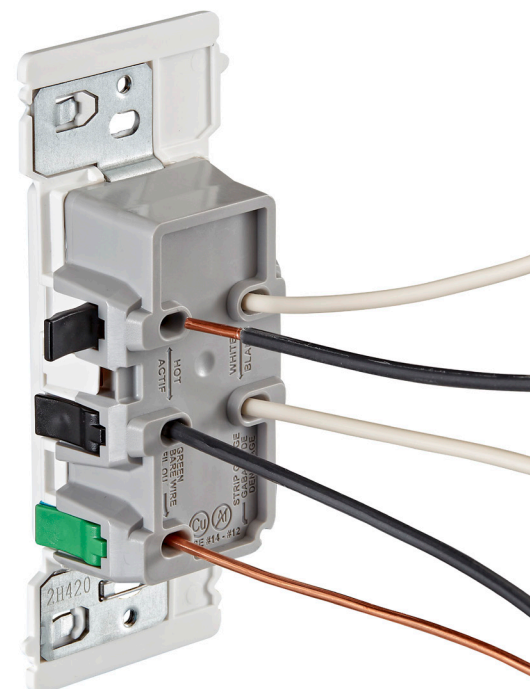


Leviton's Decora Edge wiring devices provide the classic appearance and superior performance of Decora devices in a new, **easier-to-install, safer** design. The line consists of Single Pole and 3-Way Switches and a Tamper-Resistant 15-amp Duplex Receptacle. Innovative installation features such as color-coded lever terminals (including the ground terminal) for faster, efficient wiring, a larger strap with a unique tongue and groove alignment feature for quicker trim out on multi-gang installations, and no exposed metal parts for safety, make Decora Edge ideal for new home construction and MDU projects as well as retrofit applications.

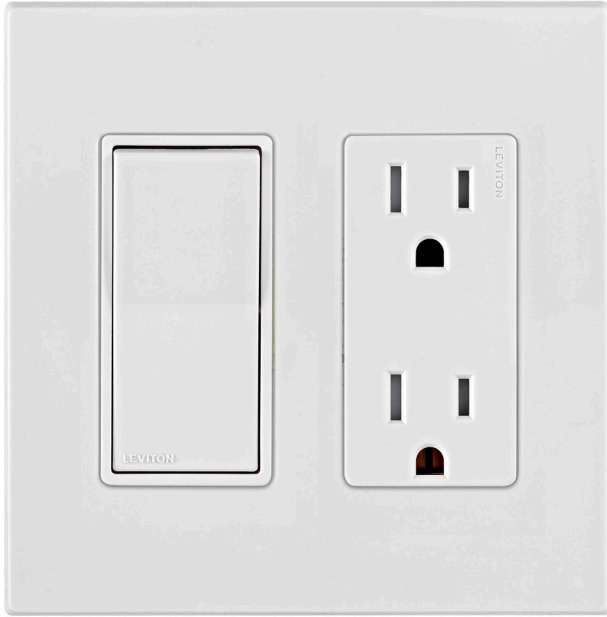
Installers using Decora Edge will experience an installation process as unique as it is practical. The color-coded levers provide the foundation for quick installation by helping to rapidly identify the correct terminal for wiring, including a first of it's kind lever terminal for the ground wire. The lever termination feature assures a positive connection has been made. This patent pending design also has a snap feature with an audible "click" so installers can be confident with every termination.

## Applications

Living/Family Rooms, Bedrooms, Kitchens, Bathrooms, Home Offices, Hallways and Basements.



## PRODUCT SPECIFICATIONS

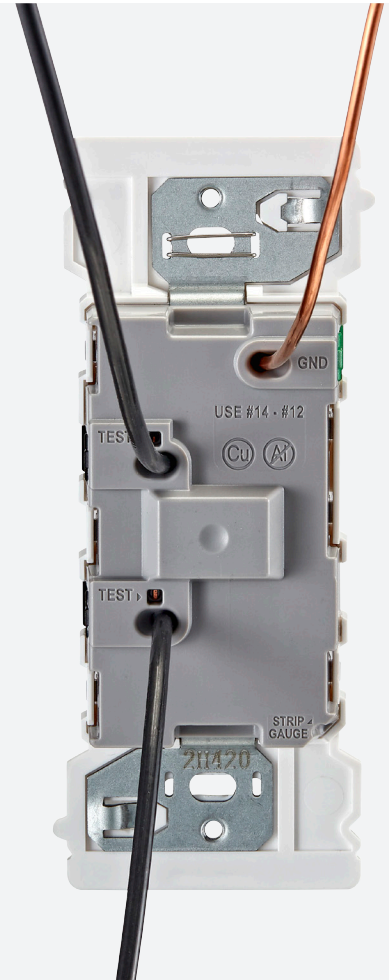


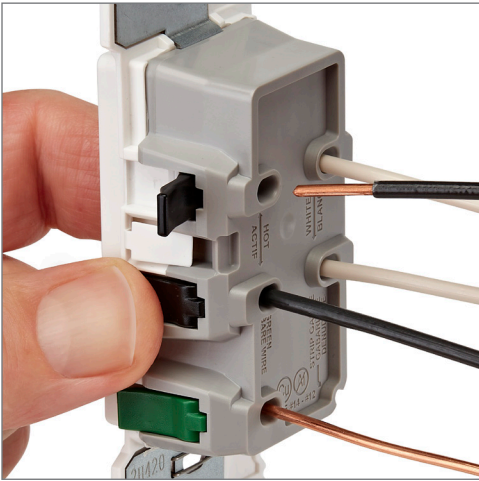
# decora edge™

## The Future of Wiring

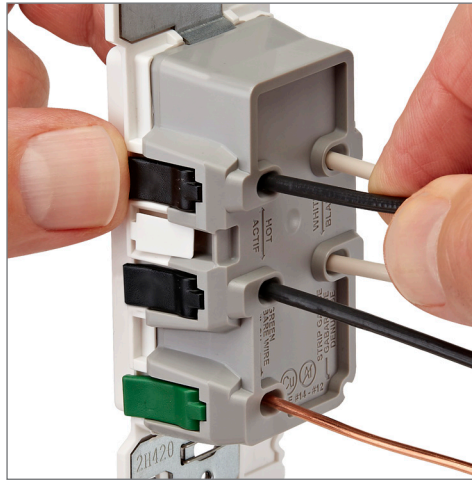
### Features and Benefits

- Patent pending lever terminals for fast, efficient wiring
- Color-coded lever terminals reduce risk of miswiring
- Lever doors have snap feature to assure connection has been made; audible click confirms lever door is closed
- Only Residential device on the market with a quick termination ground wire
- No exposed metal parts for enhanced safety; eliminates need for electrical tape
- Lever connectors work with 14 gauge and 12 gauge stranded and solid copper wire
- Wire openings prevent wire insulation from being inserted into the terminals
- One standard strip gauge for all devices
- Strap's unique tongue and groove alignment offers quicker trim out on multi-gang installations
- Strap works with any sized wallplate
- Devices coordinate seamlessly with other Decora devices
- Can be used with Decora wallplates and Decora Plus™ screwless wallplates
- Receptacle allows for split circuit applications
- Test openings on switches for circuit testers

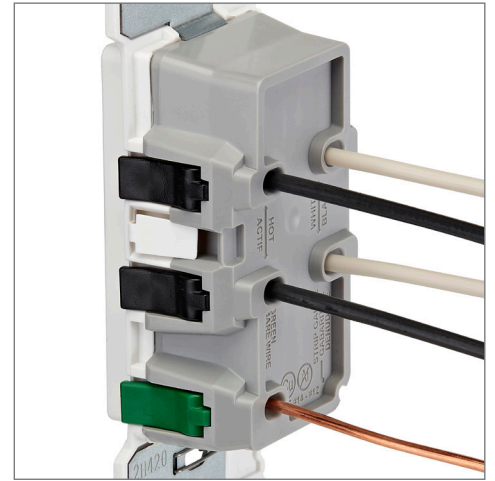




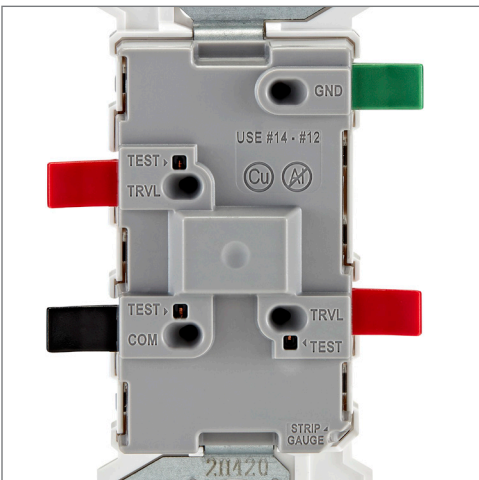
**PUSH.**  
Faster and easier to wire



**CLICK.**  
Audible 'click' confirms secure connection



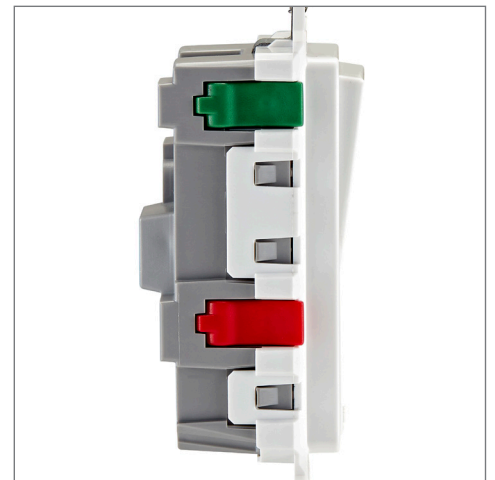
**DONE.**  
Terminate with confidence



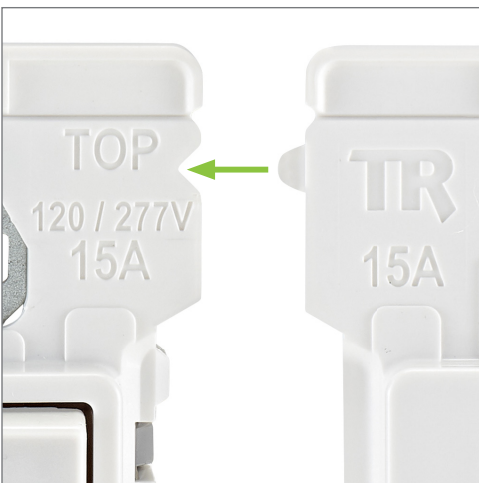
Color-coded lever terminals, including ground



Lever connectors work with 14 gauge and 12 gauge stranded and solid copper wire



No exposed metal parts for safer installations



Strap's unique tongue and groove alignment feature offers quicker trim out on multi-gang installations



Large strap makes installations easier



Longer and wider strap is compatible with Midway wallplates, and with Standard sized wallplates when breakaway tab is removed

## Specifications

E5601, Single Pole Switch

E5603, 3-Way Switch

**Amperage:** 15 A

**Body Material:** Thermoplastic

**Self-Grounding:** Yes

**HP Rating:** 1/2HP-120V 2HP-240V-277V

**Max. Amperage:** 15 Amp

**Strap Material:** Plastic and Steel

**Termination:** Side Lever

**Type:** Rocker Switch

**Voltage:** 120/277 VAC

**Standards and Certifications:**

**CSA 22.2 No 111**

**NOM:** NOM Certified

**UL 20:** File E7458

**Warranty:** 2-Year Limited

E5325, 15 Amp Duplex Receptacle

**Amperage:** 15 A

**Body Material:** Thermoplastic

**Blade Type:** Straight Blade

**Feature:** Tamper-Resistant

**Self-Grounding:** Yes

**NEMA:** 5-15R

**Strap Material:** Plastic and Steel

**Termination:** Side lever

**Type:** Duplex Receptacle

**Voltage:** 125 VAC

**Standards & Certifications:**

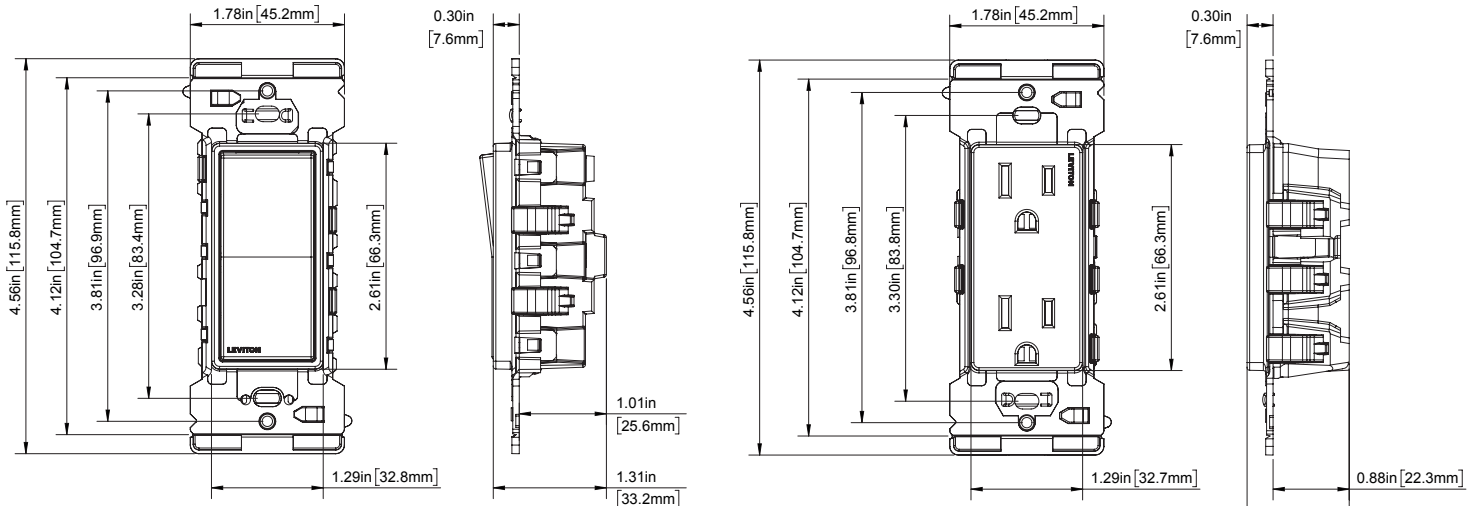
**CSA C22.2 No. 42:** File 152105; Class 6233-01

**NOM:** NOM Certified

**UL 498:** File E13399

**Warranty:** 2-Year Limited

## Dimensional Drawings



## Ordering Information

Cat. No.	Description	Rating	Color
E5601	Single Pole Switch	15 AMP, 120/277V	White
E5603	3-Way Switch	15 AMP, 120/277V	White
E5325	15 Amp Tamper-Resistant Duplex Receptacle	15 AMP, 125V	White



Leviton Manufacturing Co., Inc.

Tech Line: 1-800-824-3005

Mon-Fri 8am-10pm EST, Saturday 9am-7pm EST, Sunday 9am-5pm EST

For 24/7 product support visit [www.leviton.com/support](http://www.leviton.com/support)

Visit our Website at: [www.leviton.com](http://www.leviton.com)

© 2023 Leviton Manufacturing Co., Inc. All rights reserved.

All trademarks are the property of their respective owners.



JS-041222



Scan to learn more.  
[leviton.com/DecoraEdge](http://leviton.com/DecoraEdge)