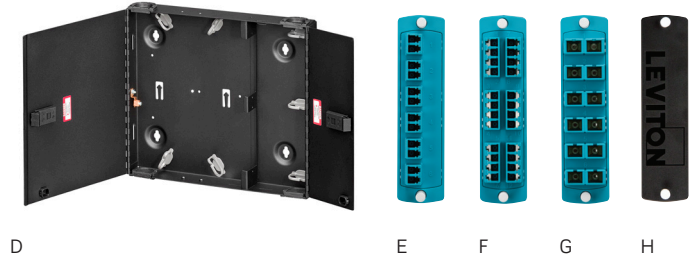


SDX PLATFORM | FIBER OPTIC ENCLOSURES, ADAPTER PLATES, AND ACCESSORIES



RACK MOUNT ENCLOSURES

- Removable sliding tray option allows for easier and faster installation
- Constructed of 16Ga steel for robustness

2000i SDX RACK-MOUNT ENCLOSURES

	Part No.
[A] 1RU, empty, sliding tray, accepts 3 adapter plates	5R1UH-S03
2RU, empty, sliding tray, accepts 6 adapter plates	5R2UH-S06
4RU, empty, sliding tray, accepts 12 adapter plates	5R4UH-S12

1000i SDX RACK-MOUNT ENCLOSURES

	Part No.
[B] 1RU, empty, accepts 3 adapter plates	5R1UM-F03
1RU, empty, with sliding tray, accepts 3 adapter plates	5R1UM-S03
2RU, empty, accepts 6 adapter plates	5R2UM-F06
2RU, empty, with sliding tray, accepts 6 adapter plates	5R2UM-S06
3RU, empty, accepts 9 adapter plates	5R3UM-F09
4RU, empty, accepts 12 adapter plates	5R4UM-F12

500i SDX RACK-MOUNT ENCLOSURES

	Part No.
[C] 1RU, empty, accepts 3 adapter plates	5R1UL-F03
2RU, empty, accepts 6 adapter plates	5R2UL-F06

WALL-MOUNT ENCLOSURES

- Mini size offers density up to 24 fibers, option to lock, and stackable
- Low-profile depth on small size minimizes protrusion from wall
- Constructed of 16Ga steel for robustness

WALL-MOUNT ENCLOSURES (NO LOCK)

	Part No.
Mini, empty, accepts 1 adapter plate	5WMNT-01C
[D] Small, empty with dual door, accepts 2 adapter plates	5WSML-02C
Medium, empty with dual door, accepts 4 adapter plates	5WMED-04C
Large, empty with dual door, accepts 12 adapter plates	5WLRG-12C

ADAPTER PLATES

- Patented design eliminating loose fit and rattle
- Solid color identifies fiber type per TIA standards
- Use of zirconia ceramic sleeve for optimal performance and quality

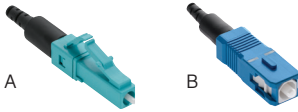
SDX MOLDED ADAPTER PLATES

	Part No.
[E] Plate (aqua), 50 μm LOMM (OM3 and OM4) Duplex LC, 12-fiber	5F100-2QL
Plate (blue), SM (OS2), Duplex LC, 12-fiber	5F100-2LL
[F] Plate (aqua), 50 μm LOMM (OM3 and OM4) Quad LC, 24-fiber	5F100-4QL
Plate (blue), SM (OS2), Quad LC, 24-fiber	5F100-4LL
Plate (aqua), 50 μm LOMM (OM3 and OM4), Duplex SC, 6-fiber	5F100-6QC
Plate (blue), SM (OS2), Duplex SC, 6-fiber	5F100-6LC
[G] Plate (aqua), 50 μm LOMM (OM3 and OM4), Duplex SC, 12-fiber	5F100-2QC
Plate (blue), SM (OS2), Duplex SC, 12-fiber	5F100-2LC
[H] Plate (black), Blank	5F100-PLT

ACCESSORIES

	Part No.
Universal Clamp Kit (for enclosure mounting), single cable grommet	5RCMP-KIT
Universal Clamp Kit (for enclosure mounting), multiple cable grommet	5RCMP-KT2
Universal Clamp Kit, Single and Multiple Cable Grommet (for rack mounting)	5RCMR-KIT
1RU Patch Cord Management Tray (includes 0RU cable managers)	5R1UX-CMT
2RU Patch Cord Management Tray (includes 0RU cable managers)	5R2UX-CMT

FIBER OPTIC CONNECTORS



FASTCAM™
PRE-POLISHED STYLE

FASTCAM

- No proprietary tools required for unnecessary expense
- Retermine up to 3x for higher yields
- Termination can be done on work bench or standing up for added flexibility

		OM3/4	OS2
LC	[A]	49991-LLC	49991-SLC
SC		49991-LSC	[B] 49991-SSC

All FastCAM connectors require a precision cleaver and a tool kit.



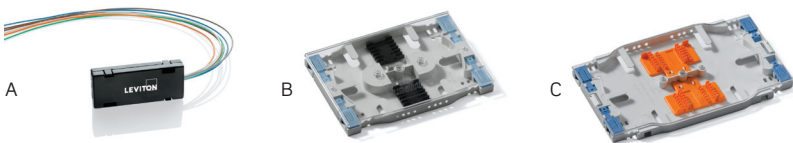
FAST-CURE™
ADHESIVE STYLE

FAST-CURE

- Indoor and outdoor application usage
- No oven or heating equipment required
- SC connector kits includes 3mm and 900µm boot sizes

		OM3/4	OS2
LC (with 3mm boot)	[C]	49990-LL2	49990-SL2
LC (with .9mm boot)		49990-LDL	[D] 49990-SDL
SC	[E]	49990-LSC	49990-SSC

FIBER OPTIC FAN KITS AND SPLICE TRAYS



SPLICE TRAY

- Compression foam pads minimize crushing of fiber at entry/exit points
- Store up to 1m of 900µm cable slack
- Clear cover for visibility of workmanship quality

[A] Fan-Out Kit 24" Length, 12-Fiber		49887-12S
Fan-Out Kit 36" Length, 12-Fiber		49887-12L
[B] 12-Fiber, 3.74" x 5.59" x .39" (Heat Shrink Splice Sleeves Included)		T5PLS-12F
[C] 24-Fiber, 4.5" x 7.63" x .43" (Heat Shrink Splice Sleeves Included)		T5PLS-24F
Splice Tray Mounting Hardware Kit		SPLMT-HKT

ECONOMY SERIES FIBER OPTIC PIGTAILS (3 METERS)

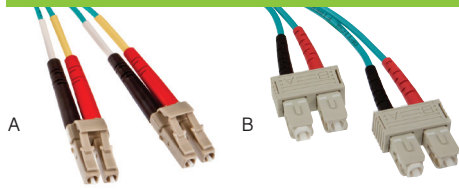


FIBER OPTIC PIGTAILS

- Support both fusion and mechanical splicing for fiber cabling systems
- 12-fiber color-coded pigtail kits per ANSI/TIA-598-D-1
- Easy-strip 900 µm buffered fiber

	OM3	OM4	OS2
LC, Individual Pigtailes	5LPLC-M03	54PLC-M03	UPPLC-S03
LC, 12-Fiber Color-Coded Pigtail Kit	5LPLC-KIT	54PLC-KIT	UPPLC-KIT
SC, Individual Pigtailes	5LPSC-M03	54PSC-M03	UPPSC-S03
SC, 12-Fiber Color-Coded Pigtail Kit	5LPSC-KIT	54PSC-KIT	UPPSC-KIT

ECONOMY SERIES FIBER OPTIC DUPLEX PATCH CORDS



PATCH CORDS
 • Riser-rated zipcord cables

• Hybrid (SC to LC) connector configuration also offered

	OM3	OM4	OS2
[A] LC-LC, 1 meter	5LDLC-M01	54DLC-M01	UPDLC-S01
LC-LC, 2 meter	5LDLC-M02	54DLC-M02	UPDLC-S02
LC-LC, 3 meter	5LDLC-M03	54DLC-M03	UPDLC-S03
LC-LC, 5 meter	5LDLC-M05	54DLC-M05	UPDLC-S05
LC-LC, 10 meter	5LDLC-M10	54DLC-M10	UPDLC-S10
[B] SC-SC, 1 meter	5LDSC-M01	54DSC-M01	UPDSC-S01
SC-SC, 2 meter	5LDSC-M02	54DSC-M02	UPDSC-S02
SC-SC, 3 meter	5LDSC-M03	54DSC-M03	UPDSC-S03
SC-SC, 5 meter	5LDSC-M05	54DSC-M05	UPDSC-S05
SC-SC, 10 meter	5LDSC-M10	54DSC-M10	UPDSC-S10

INDOOR/OUTDOOR, PREMISE DISTRIBUTION, TIGHT BUFFER, PLENUM

INDOOR/OUTDOOR PLENUM DISTRIBUTION CABLE

- Designed for simplified installation in Plenum or Riser environments, as well as Interbuilding Backbone connections
- Utilizes DryGel water blocking system in the cable core
- Operating temperature -40C to +75C
- UV and fungus resistant jacket
- 24-hour Quick Ship available



Stock jacket colors identify fiber types

	OM3	OM4	OS2
6F	PDP006EB3010/25-I/O-C4(AQU)	PDP006FB3010/F5-I/O-C4(AQU)	PDP006AB0707-I/O-C4(YEL)
12F	PDP012EB3010/25-I/O-C4(AQU)	PDP012FB3010/F5-I/O-C4(AQU)	PDP012AB0707-I/O-C4(YEL)
24F	PDP024EB3010/25-I/O-C4(AQU)	PDP024FB3010/F5-I/O-C4(AQU)	PDP024AB0707-I/O-C4(YEL)

ARMORED INDOOR/OUTDOOR, PREMISE DISTRIBUTION, TIGHT BUFFER, PLENUM

INDOOR/OUTDOOR PLENUM DISTRIBUTION WITH ARMOR

- Aluminum interlocking armor provides tremendous value when compared to installing cable inside of innerduct
- Armor remains flexible due to the spiral wrap armoring process
- More robust interlock armor for real world situations
- 24-hour Quick Ship available



Stock jacket colors identify fiber types

	OM3	OM4	OS2
6F	PDPK006EB3010/25-I/O-C4C5(AQU)	PDPK006FB3010/F5-I/O-C4C5(AQU)	PDPK006AB0707-I/O-C4C5(YEL)
12F	PDPK012EB3010/25-I/O-C4C5(AQU)	PDPK012FB3010/F5-I/O-C4C5(AQU)	PDPK012AB0707-I/O-C4C5(YEL)
24F	PDPK024EB3010/25-I/O-C4C5(AQU)	PDPK024FB3010/F5-I/O-C4C5(AQU)	PDPK024AB0707-I/O-C4C5(YEL)

ADVENTUM™ INDOOR/OUTDOOR PLENUM LOOSE TUBE



PLENUM LOOSE TUBE

- Place ADVENTUM™ anywhere in a network, bypassing the traditional transition points required in most installations

- Save significant installation time and cost, because there is no cleaning of gels required for installation
- Find ideal for fusion splicing in Equipment Facility or Equipment Room

	OM3	OM4	OS2
6F	LTP006EB3010/25	LTP006FB3010/F5	LTP006AB0403
12F	LTP012EB3010/25	LTP012FB3010/F5	LTP012AB0403
24F	LTP12B024EB3010/25	LTP12B024FB3010/F5	LTP12B024AB0403
48F	LTP12B048EB3010/25	LTP12B048FB3010/F5	LTP12B048AB0403
72F	LTP12B072EB3010/25	LTP12B072FB3010/F5	LTP12B072AB0403
144F	LTP12B144EB3010/25	LTP12B144FB3010/F5	LTP12B144AB0403
288F	LTP12B288EB3010/25	LTP12B288FB3010/F5	LTP12B288AB0403

ADVENTUM INDOOR/OUTDOOR PLENUM LOOSE TUBE WITH ARMOR-TEK™



PLENUM LOOSE TUBE WITH ARMOR

- Easy one-pull installation into indoor, indoor/outdoor, building and campus backbone environments
- Saves up to 25% total installed cost over OSP cable

- Jacketed armor remains flexible due to the spiral wrap armoring process
- Aluminum interlock offers 4 to 8 times the crush resistance of standard dielectric fiber cable

	OM3	OM4	OS2
6F	LTPK006EB3010/25	LTPK006FB3010/F5	LTPK006AB0403
12F	LTPK012EB3010/25	LTPK012FB3010/F5	LTPK012AB0403
24F	LTPK12B024EB3010/25	LTPK12B024FB3010/F5	LTPK12B024AB0403
48F	LTPK12B048EB3010/25	LTPK12B048FB3010/F5	LTPK12B048AB0403
72F	LTPK12B072EB3010/25	LTPK12B072FB3010/F5	LTPK12B072AB0403
144F	LTPK12B144EB3010/25	LTPK12B144FB3010/F5	LTPK12B144AB0403
288F	LTPK12B288EB3010/25	LTPK12B288FB3010/F5	LTPK12B288AB0403