

Home Builder Products

Building better, smarter homes...together.



THE FUTURE IS ON®

LEVITON®



Whole Home Leviton

Why Partner with Leviton?

Did you know Leviton devices are in over 90% of U.S. homes? For over a century, Leviton quality and innovation have set the benchmark for residential electrical needs. Our expertly designed and engineered products are easy to install and add safety, convenience and smart functionality to the homes you build.





INNOVATIVE

Leviton develops reliable solutions engineered for the future and designed to increase home value.



SAFE

Electrical safety is our number one priority. You and your customers can trust Leviton to deliver products featuring the highest safety standards.



SMART

Our Decora Smart® line of switches and lighting controls offers the latest in smart technology, making these devices the perfect addition for the modern home and lifestyle.



TRUSTED

For over 25 years, builders have named Leviton as the “Brand Used Most” for Lighting Controls/Switches in the annual Builder Magazine Brand Use Study.



Explore all our
Builder tools
Scan to learn more.

Let's Build Homes Together



PHOTO CREDIT: Erin Little for This Old House

Take Control of Your Home with the My Leviton App



Single App Control

An industry first, the My Leviton app consolidates control of the Leviton Load Center smart circuit breakers, the Decora Smart® Wi-Fi® product lines, and the Leviton Smart Electric Vehicle Charging Station enabling users to seamlessly control their My Leviton Home from anywhere in the world using their smartphone or tablet.

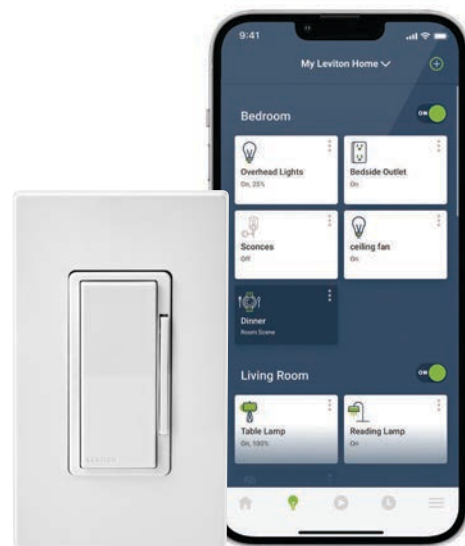
Available for download at





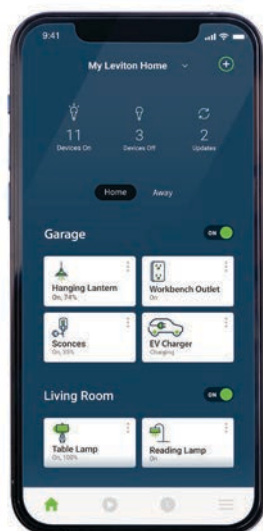
Leviton Load Center

- Schedule breakers or turn them on/off from anywhere
- Know when and why a circuit breaker trips
- View real time energy consumption: total aggregate, individual circuit, or trends by day, week, month, and year
- Calculate your approximate total energy cost per month, and more



Decora Smart®

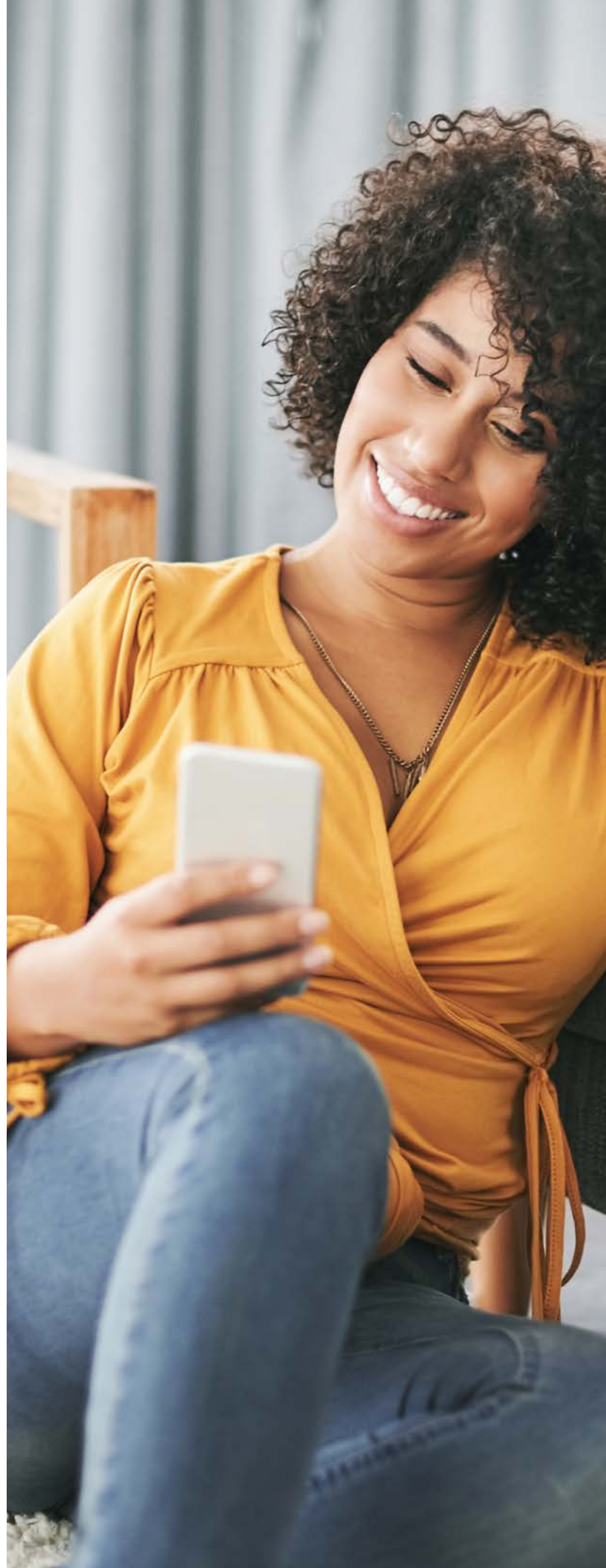
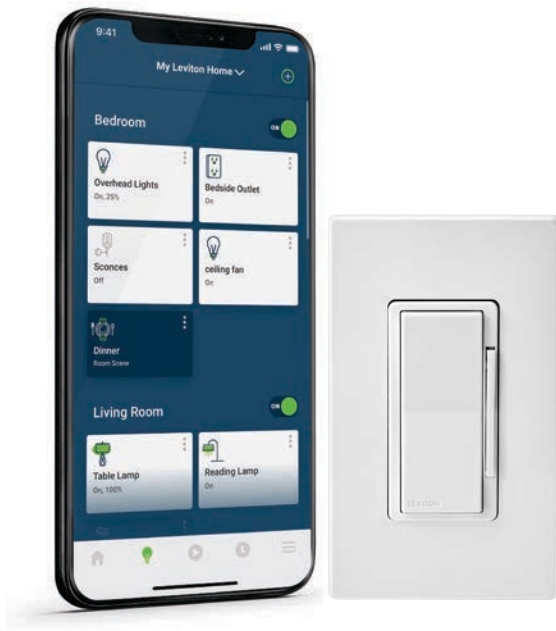
- Schedule lights and connected loads to turn ON/OFF at specific times or based on sunrise/sunset
- Group smart devices into rooms, and create scenes to activate multiple lighting loads at once
- Customize lighting controls with settings for fade rate, minimum/maximum brightness, bulb type selection, and more



EV Series Smart Home

- Schedule charging sessions
- Remotely start/stop charging
- View charging status
- Receive fault notifications





Decora Smart[®]

Automated lighting solutions for the entire home

Leviton offers a wide selection of dimmers, switches, receptacles and plug-in products for automated control of lights, motor loads, appliances and more via smartphone, tablet or voice. Anytime, from anywhere.

Learn more at

[leviton.com/decorasmart](https://www.leviton.com/decorasmart)





Decora Smart® Motion Sensing Dimmer

Combines the benefits of a smart dimmer plus hands-free control with motion detection. This device offers a range of custom features including motion snooze, night pre-set levels, guide light and room occupancy response which triggers other devices on/off based upon occupancy.



Decora Smart® Wi-Fi® 2nd Gen

Decora Smart Wi-Fi 2nd Gen devices connect to a Wi-Fi network to provide easy Wi-Fi lighting control for the whole home. Homeowners can use their voice with Hey Google, Amazon Alexa™ or Apple Siri® to control connected lighting.



Wire-Free Anywhere Companions

Anywhere Dimmer and Switch Companions offer a simple retrofit solution for 3-way/multi-location applications. They pair with Decora Smart 2nd Gen Dimmers, Switches and Mini Plug-ins to add lighting control where needed or desired - no wiring required.



Decora Smart® 2nd Gen Scene Controller Switch

The Scene Controller Switch has three scene control buttons and a built-in switch for connected lights. Multi-button control is perfect for entryways and bedrooms to control room scenes or whole house lighting activities with the press of a button.

(shown with custom engraved buttons)



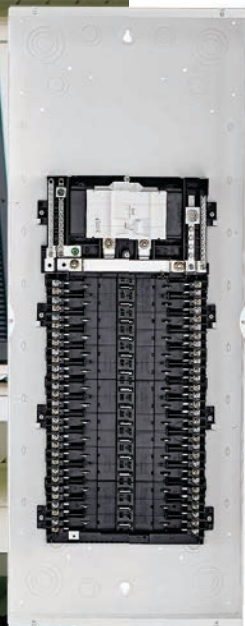
The Leviton Load Center

Introducing the Latest in Residential Power Distribution

An industry favorite for its attractive enclosure and easy installation, the Leviton Load Center also wins in modularity with optional smart breakers that can be intermixed with basic breakers.

Learn more at
[Leviton.com/loadcenter](https://leviton.com/loadcenter)





Load Centers

Available in 20, 30, 42 and 66 space models, the Leviton Load Center offers the solution for a wide variety of home designs.

To satisfy all building needs, the Leviton Load Center is available in Indoor, Outdoor, Meter Main, and Meter/Load Center Combo (in side-by-side or semi-flush options) models.



Circuit Breakers

The Leviton Load Center offers a wide variety of circuit breaker variations including GFCI, AFCI, AFCI/GFCI, GFPE, Smart, Surge and Standard with various amperage ratings.

Smart Functionality

Any Leviton Load Center can be upgraded to Smart with the addition of a Leviton Whole Home Energy Monitor (LWHEM) and 2nd Gen Smart Circuit Breakers. By using the intuitive My Leviton app, homeowners can track and manage their home's energy consumption and production via a smartphone, tablet or desktop.

Surge Protection Breakers

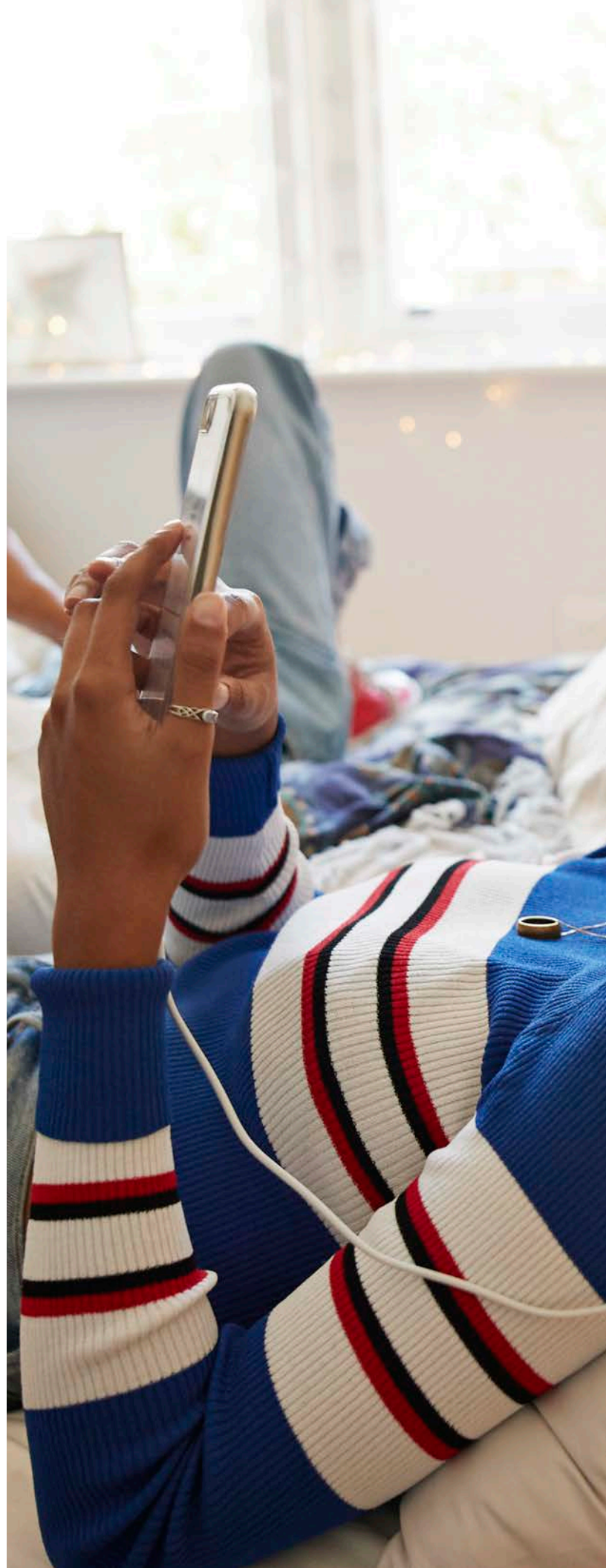
Our plug-on surge protective device is designed for easy in-panel installation and provides effective surge protection for the entire home.



Protect electronics and appliances with surge protection

The 2023 NEC[®] requires a Type 1 or Type 2 surge protective device to be installed in new dwellings. Surge panels and receptacles reduce the risk of damage from spikes and surges entering the property through AC power lines.

[Learn more at Leviton.com/surge](https://www.leviton.com/surge)



USB Charger Devices

A Charger for Every Space

Engineered and tested for compatibility with more of the latest devices, Leviton USB In-Wall Chargers deliver fast, efficient charging to phones, tablets, laptops and more: backed by the quality you expect from the brand you trust. From kitchens, bedrooms and home offices to bathrooms and more, our in-wall chargers can be conveniently used in any room of the home.

Learn more at

[Leviton.com/usb](https://www.leviton.com/usb)



60W USB Dual Type C/C Power Delivery Receptacle Charger

The most powerful USB Charger on the market with 60W of power on a single port.



GFCI Combination USB Receptacle Charger

Offers the trusted safety of Leviton GFCI protection with the advantage of powerful USB charging.



5.1A USB Type A/C Receptacle Charger

Two high-powered charging ports deliver a combined total of 5.1A of charging current and 25+ watts of power.

Now available with power delivery too.



3.6A USB Type A/A Receptacle Charger

Two high-powered charging ports with 3.6A of charging power.



Safety

Protection from the brand you trust

Advancements in technology present new opportunities for you to offer the latest electrical safety devices in the homes you build. Leviton, a leading innovator of electrical safety for over 100 years, delivers safety products that help protect family and property while meeting or exceeding National Electrical Code® requirements as well as UL and CSA standards.

Learn more at

[Leviton.com/safety](https://www.leviton.com/safety)





GFCI Receptacles

Engineered to help protect residents from the hazards of electric shock and electrocution by interrupting power if a ground-fault is detected.

Also available in a weather-resistant model for outdoor use.



AFCI Receptacles

Identify potentially dangerous arc-faults and respond by interrupting power, reducing the likelihood of a home's electrical system being an ignition source of a fire.



Dual Function AFCI/GFCI Receptacles

A single device that offers protection from electrical fires that could result from arc-faults and from electrical shock due to ground-faults.



Tamper-Resistant Receptacles

A built-in shutter mechanism provides protection against injury by preventing foreign objects such as keys from being inserted into the receptacle.



Lighting Controls

Solutions for an Enhanced Living Environment

Leviton Lighting Controls provide reliable, state-of-the-art management of lighting loads throughout the home. Our Dimmer, Sensor, Timer Switch and Fan Speed Control lines offer the perfect solution for precise control to create ambiance, enjoy the convenience of hands-free switching, and manage energy usage.

Learn more at
[Leviton.com/lightingcontrols](https://www.leviton.com/lightingcontrols)





Dimmer Switches

Leviton offers a wide range of dimmers in a variety of styles, from our signature Decora® brand to traditional rotary, to meet both the functional and decorative needs of the homeowner. Engineered to deliver exceptional performance, all Leviton dimmers are tested with leading bulbs to help ensure compatibility. Decora Smart® dimmers provide the ultimate dimming experience through the ease of app control or voice command.



Motion Sensor Switches

Decora sensors combine state-of-the-art technology with a sleek appearance to provide optimal management of lighting and motor loads with a choice of either Manual-ON (Vacancy Sensor) or Automatic-ON (Occupancy Sensor) switching. Our Humidity Sensor and Fan Control detects rising humidity and automatically activates the ventilation or exhaust fan to reduce excess condensation.



Timer Switches

Easily add convenience to any home. Built to the highest performance standards, Leviton timer switches provide a long-lasting and reliable service life. They are an easy upgrade to help homeowners reduce energy costs, improve security and add convenience to daily living.



Fan Speed Controls

From Smart to traditional models, Leviton Fan Speed Controls provide easy regulation of ceiling fan speed, ranging from low to high, for a more comfortable living environment.



Decora®

Setting the Industry Standard

Exceptional design stands the test of time and our hallmark Decora brand is no exception. Decora has set the industry standard for style and performance with devices ranging from switches, receptacles and dimmers to USB charger devices, timers, sensors and our exciting Decora Smart® products. Decora devices add contemporary elegance and a finishing touch to any room in the home.

The popularity of the Decora brand has inspired imitators. Look for the Leviton name to ensure the device you install is a genuine Decora product.

Learn more at
[Leviton.com/decora](https://www.leviton.com/decora)





Decora Edge™

Provides the traditional appearance and superior performance of Decora® devices in a new faster, easier-to-install, and safer design.

[Learn more at Leviton.com/decoraedge](https://www.leviton.com/decoraedge)

Antimicrobial Treated Devices

Help to keep the surfaces of our switches and wallplates cleaner by helping to inhibit the growth of mold, mildew, fungi and odor-causing bacteria on the surface of the devices in between normal cleanings.

[Learn more at Leviton.com/antimicrobial](https://www.leviton.com/antimicrobial)

Decora® Weather-Resistant Switches

An all-in-one weather-resistant switch solution which eliminates the need for the addition of an outdoor protective cover.

[Learn more at Leviton.com/outdoorliving](https://www.leviton.com/outdoorliving)

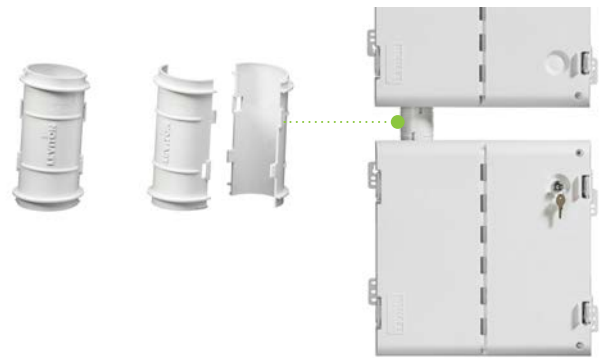


Leviton Wireless Structured Media™ Centers

The Nerve Center of the Connected Home

Create the ideal central distribution point to manage wireless and wired residential networks. In addition to supporting the full reach of wireless signals, enclosures offer significant builder and user advantages.

Learn more at
[Leviton.com/ch](https://www.leviton.com/ch)



Multi-Bay Attachment Tube

This accessory creates a multi-bay system between two fully independent SMCs, isolating enclosures for better security and heat containment.



Tri-Plane Heat Dissipation

Vented Door promotes better intake of cool air and outward flow of warm air, maximizing performance and extending the life of active equipment.

Industry-Leading Capacity

Enclosures have more cubic inches than other options on the market when used with Vented Door.

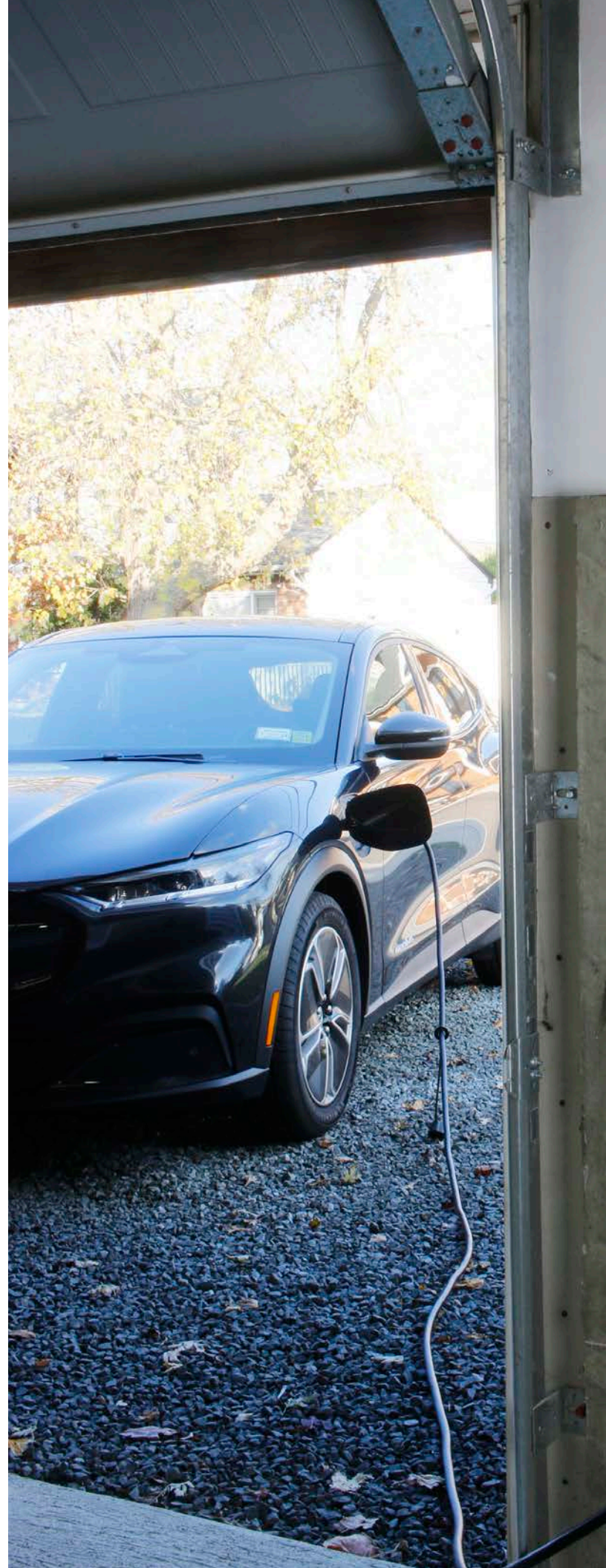
Door Versatility

Universal left or right side door orientation. Door opens 180° for better access, and is engineered so it won't shut on its own.



Ratcheting Hinge & Latch System

The system creates fast, tool-free door installations, and the ratcheting feature accommodates for wall imperfections and varying thickness of drywall.



evr-green®

Electric vehicle charging you can trust

- Easy to install - compact size and unique wiring component
- Easy to control - remote start/stop, schedule charging times, view status, and more via the My Leviton app
- Easy to access - pedestal system is ADA-compliant
- Easy to use - choose from plug-and-play or access card options
- Easy to place - for both indoor and outdoor use with water-resistant enclosure

Learn more at

[Leviton.com/evcharging](https://www.leviton.com/evcharging)





Plan Ahead with EV-Ready Properties

As the demand for electric vehicle charging stations increases, be sure the property is EV-Ready, making it easy and less costly to retrofit as you have already installed proper conduit and electrical wiring. For an extra layer of security, install Leviton's surge protective panels to protect your charging stations from damaging power surges.



Increase Property Values with EV Charging Stations

One of the easiest ways to increase property value is to install an electric vehicle charging station from the brand you trust. Leviton EV solutions help attract residents and differentiate your property by showcasing green solutions.

The future is electric –
get prepared now

Best, Better, Basic

Solutions for Every Home

Leviton offers devices to satisfy the needs of every customer. Our Basic devices are standard in appearance and function. Better devices offer users convenience and style. And our Best devices are enhanced with Smart functionality and other upgrades to meet the demands of today's lifestyle.

BEST



**DECORA SMART®
MOTION SENSING
DIMMER**



**DECORA SMART®
WI-FI® 2ND GEN
DIMMER**



**DECORA SMART®
WI-FI® 2ND GEN 4-SPEED
FAN SPEED CONTROLLER**



**DECORA SMART®
WI-FI® 2ND GEN
TAMPER-RESISTANT OUTLET**



**DECORA SMART®
WI-FI® 2ND GEN
4-BUTTON CONTROLLER**



**60W USB DUAL TYPE C/C
POWER DELIVERY
RECEPTACLE CHARGER**



**SMARTLOCKPRO®
DUAL FUNCTION AFCI/GFCI
RECEPTACLE**



**HUMIDITY SENSOR
FAN CONTROL**



RENU®

Renu is our colorful collection of electrical wiring devices including switches, receptacles, dimmers and wallplates featuring easily changeable faceplates. Available in a variety of popular colors plus stainless steel look wallplate.

[Learn more at Leviton.com/renu](https://www.leviton.com/renu)

BETTER



DECORA® SWITCH



DECORA® SLIDE DIMMER



DECORA® SWITCH WITH LED GUIDE LIGHT



DECORA® IN-WALL 30-MINUTE COUNTDOWN TIMER SWITCH



DECORA® DUPLEX RECEPTACLE



SMARTLOCKPRO® GFCI/GUIDE LIGHT RECEPTACLE



TYPE A AND TYPE-C USB CHARGER/DUPLEX RECEPTACLE



DECORA® MOTION/VACANCY SENSOR*
*Manual-On can be used to comply with 2019 California Title 24, Part 6, Vacancy Control Device Requirements.

BASIC



TOGGLE SWITCH



TOGGLE SLIDE DIMMER



ROTARY DIMMER



DUPLEX RECEPTACLE



SMARTLOCKPRO® AFCI RECEPTACLE



SMARTLOCKPRO® GFCI RECEPTACLE



TYPE A USB CHARGER/DUPLEX RECEPTACLE



Scan QR code to view
Leviton & Builders video



Leviton Manufacturing Co., Inc.

Tech Line: 1-800-824-3005

Mon-Fri 8am-10pm EST, Saturday 9am-7pm EST, Sunday 9am-5pm EST

For 24/7 product support visit www.leviton.com/support

Visit our Website at: www.leviton.com

© 2024 Leviton Manufacturing Co., Inc. All rights reserved.
All trademarks are the property of their respective owners.



CN-102721A-tp