

Leviton Cabling Guide for Cisco 100G and 400G Optics



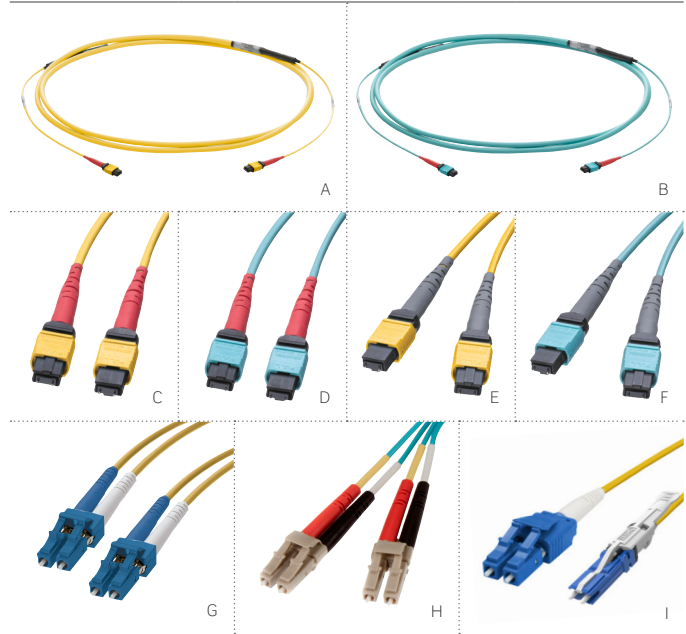
100G QSFP28 MODULES									
Cisco P/N	Media	Connector Interface	Breakout	Leviton Near End Cassette P/N	Leviton Far End Cassette P/N	Leviton Far End Breakout Cassette P/N	Breakout Lane Speed	HDX Example (Near End/Far End)	HDX Example (Breakout Side)
QSFP-100G-SR4-S	MM	MPO12	Yes (4x25G-SR)	HDX: 42NM2-S5C e2XHD: ULE2XHD-F024NHKDS5	HDX: 42NM2-S5C e2XHD: ULE2XHD-F024NHKDS5	HDX: 42LM2-21C e2XHD: ULE2XHD-F024CHQDS4	25G		
QSFP-40/100G-SRBD	MM	LC	No	HDX: 42LM2-21C e2XHD: ULE2XHD-F024CHQES4	HDX: 42LM2-21C e2XHD: ULE2XHD-F024CHQES4	N/A	N/A		N/A
QSFP-100G-PSM4-S	SM	MPO12	Yes (4x25G-LR)	HDX: U2NM2-S5C e2XHD: ULE2XHD-A024NHKDS5	HDX: U2NM2-S5C e2XHD: ULE2XHD-A024NHKDS5	HDX: U2LM2-21C e2XHD: ULE2XHD-A024CHLES4	25G		
QSFP-100G-SM-SR	SM	LC	No	HDX: U2LM2-21C e2XHD: ULE2XHD-A024CHLES4	HDX: U2LM2-21C e2XHD: ULE2XHD-A024CHLES4	N/A	N/A		N/A
QSFP-100G-CWDM4-S	SM	LC	No	HDX: U2LM2-21C e2XHD: ULE2XHD-A024CHLES4	HDX: U2LM2-21C e2XHD: ULE2XHD-A024CHLES4	N/A	N/A		N/A
400G QSFP-DD MODULES									
Cisco P/N	Media	Connector Interface	Breakout	Leviton Near End Side Cassette P/N	Leviton Far End Cassette P/N	Leviton Far End Breakout Side Cassette P/N	Breakout Lane Speed	HDX Example (Near End/Far End)	HDX Example (Breakout Side)
QDD-400G-SR4-BD	MM	MPO12	Yes (4x40/100G-SRBD)	HDX: 5FUHD-6MB e2XHD: E2XHD-4MB	HDX: 5FUHD-6MP e2XHD: E2XHD-4MP	HDX: 42LM2-21C e2XHD: ULE2XHD-F024CHQDS4	100G		
QDD-400G-DR4-S	SM	MPO12	Yes (4x100G-DR)	HDX: U2NM2-S5C e2XHD: ULE2XHD-A024NHKDS5	HDX: U2NM2-S5C e2XHD: ULE2XHD-A024NHKDS5	HDX: U2LM2-21C e2XHD: ULE2XHD-A024CHLES4	100G		
QDD-4X100G-FR-S	SM	MPO12	Yes (4x100G-FR)	HDX: U2NM2-S5C e2XHD: ULE2XHD-A024NHKDS5	HDX: U2NM2-S5C e2XHD: ULE2XHD-A024NHKDS5	HDX: U2LM2-21C e2XHD: ULE2XHD-A024CHLES4	100G		
QDD-400G-FR4-S	SM	LC	No	HDX: U2LM2-21C e2XHD: ULE2XHD-A024CHLES4	HDX: U2LM2-21C e2XHD: ULE2XHD-A024CHLES4	N/A	N/A		N/A
QDD-2x100-SR4-S	MM	MPO24	Yes (8x25G-SR or 2x100G-SR4)	HDX: 5FUHD-6MB e2XHD: E2XHD-4MB	N/A	HDX: 42LM2-400C e2XHD: ULE2XHD-F024CHQDS9	25G or 100G		
QDD-4X100G-LR-S	SM	MPO12	Yes (4x100G-LR)	HDX: U2NM2-S5C e2XHD: ULE2XHD-A024NHKDS5	N/A	HDX: U2LM2-21C e2XHD: ULE2XHD-A024CHLES4	100G		
QDD-2x100-CWDM4-S	SM	2 x CS	Yes (2x100G-CWDM4)	HDX: U2LM2-21C e2XHD: ULE2XHD-A024CHQES4	HDX: U2LM2-21C e2XHD: ULE2XHD-A024CHQES4	HDX: U2LM2-21C e2XHD: ULE2XHD-A024CHQES4	100G		

Note: Above does not include Long Reach and Extended Reach Modules (LR4, ER4)

Leviton Cabling Guide for Cisco 100G and 400G Optics



BASIC CABLING COMPONENTS		
Description	Leviton P/N	
24F MTP-MTP Trunk, SM	FTU-AW4024JJxxxF36C36CN-NNBS	[A]
24F MTP-MTP trunk, OM4	FTU-FW4024JJxxxF36C36CN-NNBS	[B]
24F Array cord, SM	ULUP4JJ-B0xxF	[C]
24F Array cord, OM4	544JJ-B0xxF	[D]
8F Array cord, SM	UP8MM-B0xxF	[E]
8F Array cord, OM4	548MM-B0xxF	[F]
LC-LC Patch Cord, SM	PCF-S2PD1RR-xxxxMAB	[G]
LC-LC Patch Cord, OM4	PCF-M4PD1RR-xxxxMAB	[H]
CS - LC Patch Cord, SM	FPC-S2PR2VJ-yyyMAB	[I]



xx = Length in feet (Ex. "50" is 50Ft overall length)
 xxx = Length in feet (Ex. "050 is 50Ft overall length)
 xxxx = Length in feet (Ex. "0500 is 50Ft in overall length, "0505" is 50.5Ft in overall length)
 yyy = Length in meters: 1 (001), 2 (002), 3 (003), 5 (005), 10 (010)
 Trunk Fiber Count: replace "024" in part number with 012, 048, 096, or 144

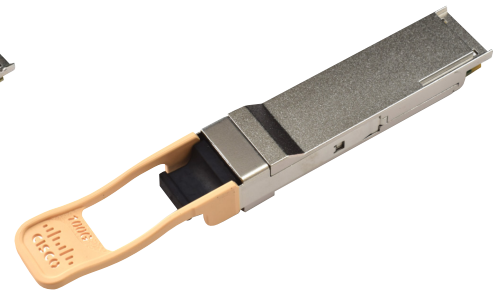
CISCO TRANSCEIVER EXAMPLES



QSFP-40/100-SRBD



QSFP-100G-CWDM4-S



QSFP-100G-SR4-S