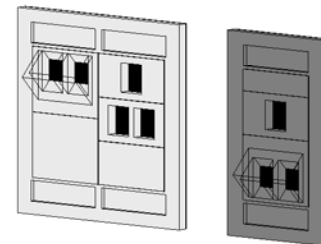
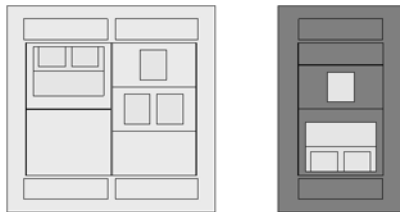


**Includes 22 MOS wallplates and 35 MOS modules**

The schedule includes the capability to display the order numbers of selected MOS product types. This Family allows the user to select different options and the order numbers will automatically update in the schedule.



Leviton Multimedia Outlet System			
Count	Equipment Abbreviation	Part Description	Part Number
1	MOS	MOS Wallplate, Dual Gang	41290-DMW
1	MOS	MOS Wallplate, Single Gang	41290-SMG
1	MOS	MOS Module, Blank, 1 Unit High	41291-1BW
1	MOS, QPW	MOS QuickPort Module, 1 Port	41291-1MG
1	MOS, QPW	MOS QuickPort Module, 1 Port	41291-1MW
1	MOS, QPW	MOS QuickPort Module, 2 Port	41291-2QW
1	MOS	MOS Module, Blank, 1.5 Unit High	41294-2BW
1	MOS, QPW	MOS QuickPort Module, 2 Port, Angled	41294-2QG
1	MOS, QPW	MOS QuickPort Module, 2 Port, Angled	41294-2QW
1	MOS	MOS Module, Blank, 0.5 Unit High	41295-5BG

Grand total: 10

**Instructions for Using This Schedule:**

Create or Open your project session. Select and copy the schedule on this page (using Ctrl-C) and paste it (using Ctrl-V) into a sheet in your project.

Information contained herein is confidential and proprietary to Leviton. Contents are subject to change without notice.

**ACCEPTANCE OF TERMS OF USE**

Access to and use of Leviton's BIM Objects constitutes your acceptance of the terms and conditions of the Use Agreement available at: [www.leviton.com/BIMterms](http://www.leviton.com/BIMterms)

© 2014 Leviton Manufacturing Co., Inc.  
All rights reserved.

**LEVITON®**

[www.leviton.com](http://www.leviton.com)

Network Solutions  
BIM

Multimedia Outlet  
System

Sample  
Schedule

3/3/2014 10:05:27 AM