

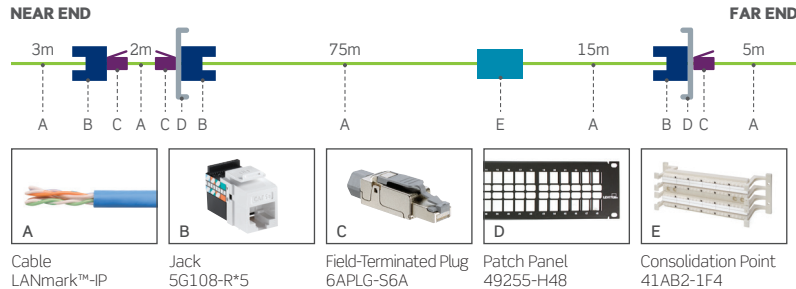
SYSTEM DATA SHEET

UP1000 | ULTRA-HIGH PoE 1G SYSTEM

Industry's first 1G system with 140-watt PoE delivery capability, featuring the GigaMax® jack and 22-gauge LANmark™-IP cable, offers superior performance for ultra high-power PoE applications

- Exceeds ANSI/TIA-568.2-D Cat 5e and ISO/IEC 11801 Class D requirements for channel, link, and component performance to support IEEE 1000BASE-T networks
- Engineered to maximize heat dissipation and support PoE up to 140 watts
- Specifically designed for intelligent building and LED lighting applications that require more than 100W PoE
- Limited lifetime warranty available when projects are installed by Leviton or Berk-Tek certified contractors
- Will exceed IEEE 802.3bt Standard up to 0.7 amps (140 watts) continuously
- Increases network efficiency and uptime with lower bit error rates

SYSTEM TOPOLOGY



RECOMMENDED FOR

Low-bandwidth high-power applications such as LED light fixture, sensors, security systems, automation, and building management

1000BASE-T network applications and mission-critical systems

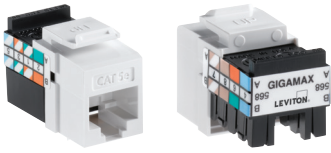
PoE standards: IEEE 802.3af, 802.3at, 802.3bt, Cisco UPoE, and Power over HDBaseT™ (PoH) up to 100 watts

PoE delivery up to 140 watts, 0.7A per conductor at 30C

Federal, state, and municipal projects funded by ARRA^

1G

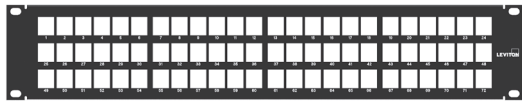
ULTRA-HIGH PoE



LEVITON JACKS

GIGAMAX® CAT 5E CHANNEL-RATED QUICKPORT® JACKS

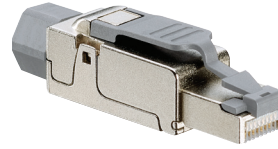
- Meet requirements for Category 5e described in ANSI/TIA-568.2-D and Class D requirements described in ISO/IEC 11801
- Robust one-piece lead-frame design increases power-carrying capacity and efficiency, while providing improved durability
- Dual wiring code label supports T568A or T568B wiring
- Narrow jack allows high port density in a small area
- Will exceed IEEE 802.3bt Standard up to 0.7 amps (140 watts) continuously
- Proudly manufactured in the U.S.



LEVITON PATCH PANELS

QUICKPORT PATCH PANELS

- Accepts all QuickPort jacks to maximize versatility with a variety of media applications
- Available in QuickPort flat, angled, recessed angled, and recessed flat configurations
- Magnifying lens on some models ensures visibility of port labels
- Angled design allows cords to route directly into vertical managers, saving rack space by eliminating horizontal management



LEVITON PLUG

UNIVERSAL TOOL-FREE PLUG

- To be terminated on LANmark™-IP CABLE
- Easy field termination without special tools
- Robust die-cast housing provides durability and shielding benefits
- Shielding provides EMI/RFI protection and signal isolation
- 360° shield housing provides secure data transmission
- Long release latch ensures easy insertion and removal in confined spaces
- UL2043 Plenum Certified
- Will exceed IEEE 802.3bt Standard up to 0.7 amps (140 watts) continuously



BERK-TEK CABLE

LANMARK™-IP CABLE

- 22 gauge copper conductors
- LP rated for power up to 140 watts, 0.7A per conductor at 30C
- All FEP primary insulation
- 105°C jacket listing
- 88% power efficiency at 100 watts PoE
- CMP plenum rated
- Low temperature rise in 192 cable bundles
- Proudly manufactured in the U.S.

PART NUMBERS - Common part numbers shown. Many additional colors, lengths, and other options available online.

LEVITON JACKS		1-PACK	25-PACK	150-PACK
GigaMax Cat 5e QuickPort Jack		5G108-R*5	5G108-B*5	5G108-J*5
LEVITON PATCH PANELS		1RU 24-PORT	1RU 48-PORT	2RU 48-PORT
Flat QuickPort Patch Panel+	49255-H24	49255-Q48	49255-H48	49255-D72
Angled QuickPort Patch Panel+	49256-H24	49256-D48	49256-H48	49256-D72
LEVITON 110-STYLE WALL-MOUNT WIRING BLOCK KIT				96-PAIR
110-Style Wiring Block, wall mount w/legs and C-4 clips*				41AB2-1F4
LEVITON PLUG				6APLG-S6A
Universal Tool-Free Plug				PLENUM REEL IN BOX
BERK-TEK CABLE				11098078
LANmark-IP Cable, Blue				11098079
LANmark-IP Cable, White				11098080
LANmark-IP Cable, Gray				

* = Color: White (W), Lt. Almond (T), Ivory (I), Yellow (Y), Orange (O), Crimson (C), Dark Red (R), Purple (P), Blue (L), Green (V), Gray (G), Black (E), Brown (B)

+ = Sold empty, load with 5G108 jacks

* = For consolidation point, legs are non-removable and not sold separately