

SYSTEM DATA SHEET

CP5300 | CAT 5E HIGH PoE UTP SYSTEM

Industry leading Cat 5e 100-watt PoE solution, featuring the ATLAS-X1™ jack and 22 gauge LANmark™-IP cable, offers superior performance for high-power applications

- Exceeds ANSI/TIA-568.2-D Cat 5e and ISO/IEC 11801-1 Class D requirements for channel, link, and component performance to support IEEE 1000BASE-T networks
- Engineered to efficiently manage heat and support PoE up to 100 watts
- Specifically designed for intelligent building and LED lighting applications
- Limited lifetime warranty available when projects are installed by Leviton Certified Contractors
- Increases network efficiency and uptime with lower bit error rates

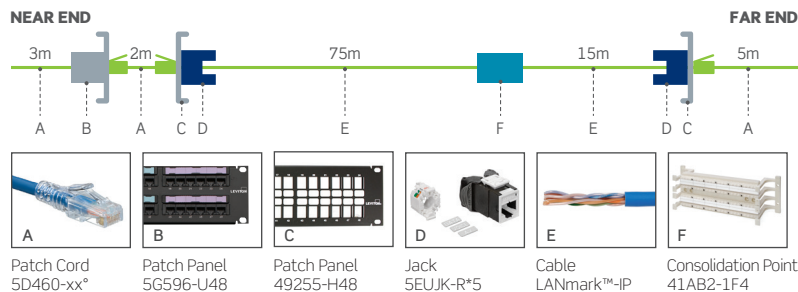
GUARANTEED* SYSTEM PERFORMANCE

CP5300 | CAT 5E HIGH PoE UTP SYSTEM CHANNEL MARGIN GUARANTEES*

Insertion Loss	NEXT	PSNEXT	ACP-F (ELFEXT)	PSACR-F	Return Loss	ACR-N	PSACR-N
2%	2 dB	2 dB	2 dB	2 dB	2 dB	2 dB	2 dB

*Values represent guaranteed margins to ANSI/TIA-568.2-D standard at 20°C ambient temperature. All parameters comply with ANSI/TIA-568.2-D Cat 5e and ISO/IEC 11801-1 Class D requirements across the entire frequency range. All values represent worst-case margins for 5- to 100-meter channel configurations. System performance margin guarantees are representative of the specific components and topologies as listed on the CP5300 solution data sheet. Contact your Leviton technical representative for more information on alternative components and channel configurations. Details at leviton.com/ns. Guaranteed System Performance applies exclusively when the system is installed and tested by Leviton Network Solutions Certified Installer. Guaranteed margin values apply at the time of installation.

SYSTEM TOPOLOGY



RECOMMENDED FOR

Low-bandwidth high-power PoE applications such as LED light fixture, sensors, security systems, automation, and building management

1000BASE-T network applications and mission-critical systems

Applications requiring PoE support up to 100 watts

5e CAT

HIGH PoE

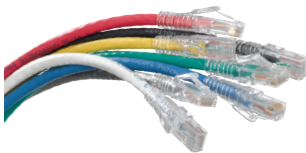




LEVITON JACKS

ATLAS-X1™ CAT 5E COMPONENT-RATED QUICKPORT™ JACKS

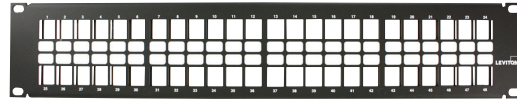
- Tested and approved for use in air-handling spaces (plenum rating) in accordance with UL Standard 2043
- Third-party tested and verified to exceed performance requirements
- Patented Retention Force Technology™ protects against time damage and maintains contact force between plug and jack, preventing arcing from intermittent disconnects in PoE applications
- PoE optimized tine geometry prevents arcing damage where plug and jack make contact, extending the life of the jack and ensuring maximum performance (see specification sheets for full PoE capabilities)
- Solid metal body dissipates 53% more heat than plastic, minimizing damage from excess heat in PoE applications
- Available with internal shutter to protect from dust and debris
- Unique, tool-free design requires no specialized termination or re-termination tool
- Short jack design supports a wider range of applications (e.g. shallow boxes, enclosures, bend radius, etc.)
- Interchangeable icons in 13 colors (VOICE, DATA, AV, and blank) make it easy to identify and track data, voice, or other functions (sold separately)



LEVITON PATCH CORDS

ATLAS-X1 CAT 5E SLIMLINE BOOT PATCH CORDS

- Tested and verified for TIA Cat 5e component requirements
- 24 gauge stranded for maximum flexibility, and extended flex life
- Nominal outer diameter of .22" reduces cable pathway congestion in racks and cabinets
- SlimLine boot supports high-density patching and easy extraction with extended-reach latch release
- Made-to-order custom lengths are available
- Supports Power over Ethernet (PoE) — see individual product specifications sheets for full capabilities



LEVITON PATCH PANELS

CAT 5E 110-STYLE AND QUICKPORT PATCH PANELS

- Exceed requirements for Category 5e described in ANSI/TIA-568.2-D and Class D requirements described in ISO/IEC 11801-1
- Gas-tight insulation displacement contacts provide excellent conductor retention and resistance to surface-contact oxidation for life of the system
- 110-Style patch panels include color codes for T568A/B wiring schemes
- QUICKPORT available in flat, angled, and Zero-RU configurations
- Magnifying lens on select models ensures visibility of port labels
- Select panels are available in white powder coat finish
- Angled panels allow for cords route directly into vertical managers from angled panel, saving rack space by eliminating horizontal management



BERK-TEK CABLE

LANMARK™ - IP CABLE

- ETL verified to ANSI/TIA-568.2-D
- Small, round design for easy installation and reduced maintenance costs
- 22 gauge copper conductors
- All FEP primary insulation
- Small OD of 0.240"
- Bandwidth beyond Category 5e requirements
- No center filler design for faster terminations
- 105°C jacket listing
- 88% power efficiency
- Supports PoE up to 100 watts
- CMP plenum rated
- Low temperature rise in 192 cable bundles
- Proudly manufactured in the US

PART NUMBERS - Common part numbers shown. Many additional colors, lengths, and other options available online.

LEVITON JACKS	STANDARD	ADDITIONAL ICONS	
ATLAS-X1 Cat 5e Component-Rated QUICKPORT Jack	5EUJK-R*5K	ICONS-IC*	
LEVITON PATCH PANELS	1RU 24-PORT	1RU 48-PORT	2RU 48-PORT
Cat 5e Flat 110-Style Patch Panel	5G596-U24		5G596-U48
Flat UTP QUICKPORT Patch Panel+	49255-H24	49255-Q48 [§]	49255-H48
Angled UTP QUICKPORT Patch Panel+	49256-H24 [§]	49256-D48 [§]	49256-H48 [§]
LEVITON 110-STYLE WALL-MOUNT WIRING BLOCK KIT			96-PAIR
Cat 5e 110-Style Wall-Mount Wiring Block Kit, includes 100-pair block with legs, labels, and 24 C-4 clips [^]			41AB2-1F4
LEVITON PATCH CORDS			
Cat 5e SlimLine Boot Patch Cord			5D460-xx [*]
BERK-TEK CABLE	PLENUM REEL IN BOX		
LANmark-IP Cable, blue	11098078		
LANmark-IP Cable, white	11098079		
LANmark-IP Cable, gray	11098080		

* = Color: White (W), Lt. Almond (T), Ivory (I), Yellow (Y), Orange (O), Crimson (C), Dark Red (R), Purple (P), Blue (L), Green (V), Gray (G), Black (E), Brown (B)

+ = Sold empty, load with 5EUJK jacks

xx = Length: 3, 5, 7, 10 feet

* = Color: White (W), Black (E)

[^] = For consolidation point, legs are non-removable and not sold separately

[°] = Color: White (W), Yellow (Y), Blue (L), Green (G), Gray (S)

[§] = Cable management bars are sold separately

Please see individual spec sheets at Leviton.com for PoE bundle size requirements.