

## QuickPort® DIN Rail-Mount Box

### APPLICATION

The compact DIN rail-mount box provides an ideal network patching solution for industrial automation and control panels. The box accepts a Leviton QuickPort Decora Insert, available with 1, 2, 3, 4, or 6 ports. The box allows for orientation of the 1-3/8 inch cable access port at the top or bottom, thereby increasing flexibility of cabling within a tight control enclosure. The box depth is suitable for Cat 5e or Cat 6 applications.



### SPECIFICATION

The DIN rail-mount box shall be field configurable to accept Decora inserts, which can house up to six QuickPort connectors. It shall include a 1-3/8 inch diameter cable access port at one end to accept 1 inch trade conduit bushings and fittings. The rear cover shall be removable and symmetrical such that the front housing can be mounted with cable access port at the top or bottom. Box shall mount to standard and low-profile 35 mm symmetrical DIN rails and 32 mm asymmetrical standard DIN rails and include a disconnect tab. Materials shall be high-impact fire-retardant plastic rated UL 94V-0, and cULus listed under UL 1863 and CAN/CSA-C22.2 No. 182.4.

### FEATURES

- Accepts QuickPort Decora Insert (1-, 2-, 3-, 4-, and 6-port versions available: 4164x-00x)
- 1-3/8 inch nominal cable access port accepts 1-inch trade conduit fittings — supplied with 1-inch bushing
- Compatible with standard and low-profile 35 mm symmetrical DIN rails and 32 mm asymmetrical DIN rails
- DIN rail adapter disconnect tab enables easy and quick installation and removal

### DESIGN CONSIDERATIONS

- Compatible with Cat 5e and Cat 6 connectivity (within cable bend radius capability)
- Large cable access port (1-3/8 inch diameter) improves access and bend radius considerations
- Symmetrical design allows cable access port to be positioned at top or bottom
- Accepts QuickPort Decora inserts

### STANDARDS COMPLIANCE

cULus Listed: UL 1863, CAN/CSA-C22.2 No. 182.4

### PHYSICAL SPECIFICATIONS

Dimensions: See page two  
Capacity: Up to 6 QuickPort connectors using Decora insert  
Cable Access: 1-3/8 inch diameter suitable for 1-inch trade conduit fittings  
DIN Rail Sizes: 35 mm symmetrical standard and low profile  
32 mm asymmetrical standard  
Operating Temp: -10°C to 60°C  
Color: Black  
Materials: UL 94V-0 high-impact plastic

### COUNTRY OF ORIGIN

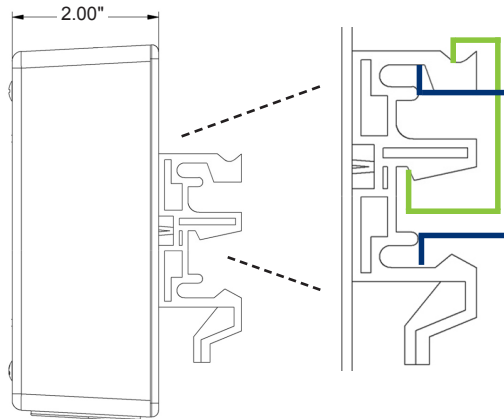
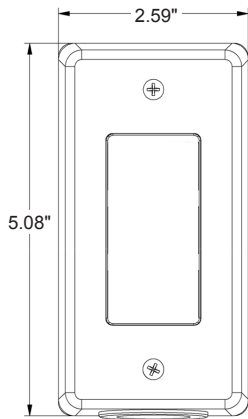
Mexico

### WARRANTY INFORMATION

For a copy of Leviton product warranties, visit [www.leviton.com/warranty](http://www.leviton.com/warranty).

**ELECTRONIC FILES**

For CAD files, typical specs, or technical drawings (.DXF, .DWG), visit [www.leviton.com](http://www.leviton.com).



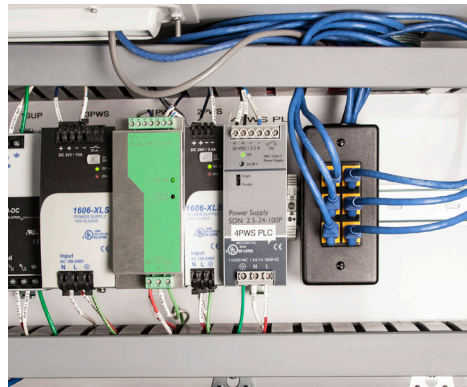
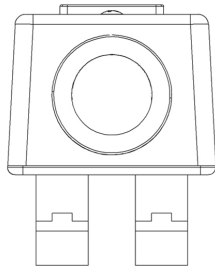
DIN 32 Rail Standard



DIN 35 Rail Standard



DIN 35 Rail Low Profile



**41089-0DN**

**PART NUMBERS**

Description	Part No.
DIN Rail-Mount Box, Black	41089-0DN

Available in black only.

**Leviton Network Solutions**  
 2222 - 222nd St. SE  
 Bothell, WA 98021-4416

**Asia / Pacific**  
 T +1.631.812.6228  
 E [infoasean@leviton.com](mailto:infoasean@leviton.com)

**Canada**  
 T +1.514.954.1840  
 E [pcservice@leviton.com](mailto:pcservice@leviton.com)

**Caribbean**  
 T +1.954.593.1896  
 E [infocaribbean@leviton.com](mailto:infocaribbean@leviton.com)

**China**  
 T +852.2774.9876  
 E [infochina@leviton.com](mailto:infochina@leviton.com)

**Colombia**  
 T +57.1.743.6045  
 E [infocolombia@leviton.com](mailto:infocolombia@leviton.com)

tel 1-800-824-3005  
 tel +1-425-486-2222  
[appeng@leviton.com](mailto:appeng@leviton.com)  
[www.leviton.com](http://www.leviton.com)

**Europe**  
 T +33.6.8869.1380  
 E [infoeurope@leviton.com](mailto:infoeurope@leviton.com)

**Mexico**  
 T +52.55.5082.1040  
 E [lsamarketing@leviton.com](mailto:lsamarketing@leviton.com)

**Middle East & Africa**  
 T +971.4.886.4722  
 E [lmeinfo@leviton.com](mailto:lmeinfo@leviton.com)

**South Korea**  
 T +82.2.3273.9963  
 E [infokorea@leviton.com](mailto:infokorea@leviton.com)