

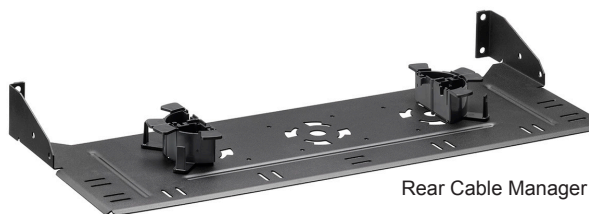
## e2XHD High-Density Universal Flat Panel & Accessories

### APPLICATION

The e2XHD Patching System provides a high-density solution for enterprise and data center applications where fast deployment and simple maintenance are priorities. Cassettes quickly snap-in and pull out of 1RU panels, making installation, moves, adds, and changes easier than ever. A rear cable manager is available to support incoming fiber and copper cables, and blank cassettes snap into the rear of panels to block any unused openings. Copper cassettes are available either on pre-terminated trunks or with field-terminated connectors. Fiber cassettes are pre-terminated.



e2XHD Flat Panel - 1RU



Rear Cable Manager



Blank Cassette

### SPECIFICATION

Panels shall be constructed of 20-gauge steel with a black powder-coated finish. Port identification shall be included. Panels shall accept shielded, UTP, and fiber e2XHD cassettes, and hold up to 48 duplex fiber channels or 48 copper ports in a 1RU space. Copper and fiber cassettes shall snap into the rear of the panel and shall require no tools to remove. Panel shall meet all ANSI/TIA-568-0.D requirements and all applicable standards.

### FEATURES

- Panels allow mix-and-match of shielded, UTP, and fiber e2XHD cassettes
- Alignment tabs ensure upright insertion of cassettes
- To remove cassettes from panel, simply pull out handle using release latch
- Rear Cable Manager supports incoming copper or fiber cables and includes cable management rings
- Blank cassette available for unused cassette openings

### DESIGN CONSIDERATIONS

- Rear cable manager sold separately from panel
- Panels mount on standard 19-inch relay rack or cabinet
- Intended installation location for manager is on the rear side of a standard rack rail. Rear cable manager is not compatible with most cabinet mounting configurations.
- Cable clamp mounting kits are available to provide strain relief for incoming fiber trunk cables
- When routing copper cable, one Rear Cable Manager is recommended for every 2RU of panel to allow for better rear access
- Panels include #12-24 fasteners and appropriate parts to bond panel to rack/cabinet

### STANDARDS & REGULATIONS

- Patch panel compliant with ANSI/TIA-568.0-D

### MECHANICAL SPECIFICATIONS

Dimensions:	See page two
Materials:	20-gauge steel, powder-coated black
Capacity:	1RU: 48 duplex fiber channels or 48 copper ports 1RU: Accepts up to 8 copper and/or fiber cassettes (12-fiber LC-MTP®, 24-fiber MTP-MTP), or 4 24-fiber LC-MTP cassettes

### COUNTRY OF ORIGIN

USA: E2XHD-BLK  
Mexico: E2X1A-CMB, E2XHD-COV  
Taiwan: E2X1F-S48

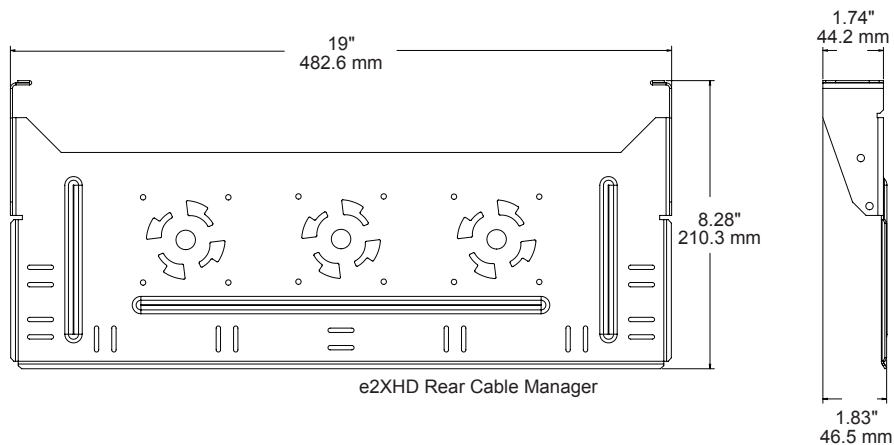
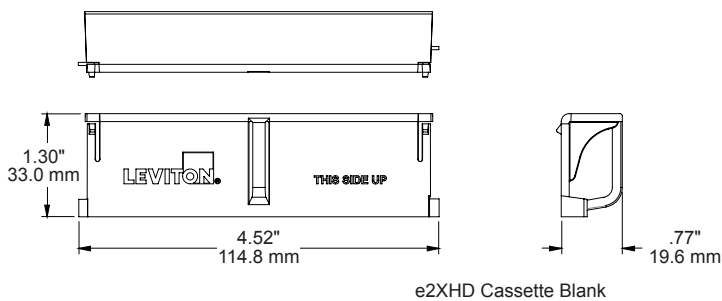
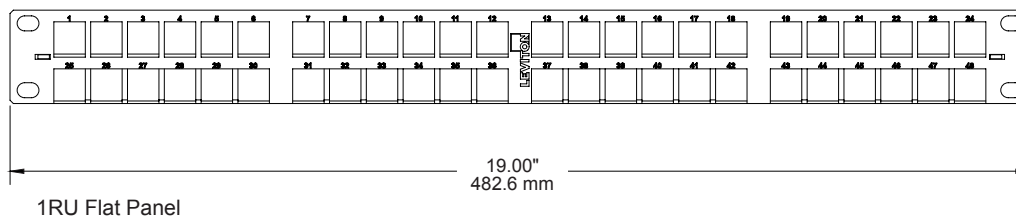
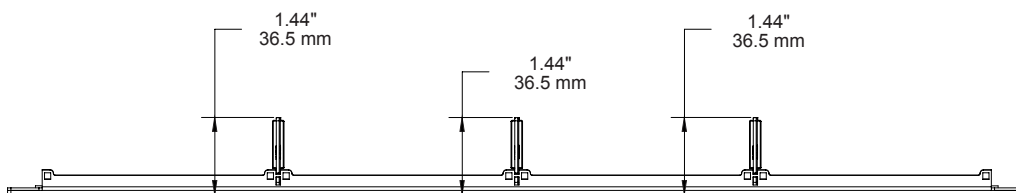
### WARRANTY INFORMATION

For Leviton product warranties, go to [leviton.com/warranty](http://leviton.com/warranty)

**PRODUCT SPECIFICATIONS**  
**E2X1F-S48, E2XHD-BLK, E2X1F-CMB**



**E2X1F-S48, E2XHD-BLK, E2X1F-CMB**



<b>E2XHD PATCHING SYSTEM</b>	
<b>Description</b>	<b>Part No.</b>
e2XHD 1RU High-Density Universal Flat Panel, accepts shielded, UTP, and fiber cassettes	E2X1F-S48
e2XHD Rear Cable Manager for flat panels, includes four quarter-inch round cable management rings	E2X1F-CMB
e2XHD Cassette Blank	E2XHD-BLK

<b>E2XHD RELATED PRODUCTS</b>	
<b>Description</b>	<b>Part No.</b>
Universal 0RU Patch Cord Cable Manager (bag of 2)	5RCMT-VFG
Universal 1RU Patch Cord Cable Manager Tray	5R1UX-CMT
Universal 2RU Patch Cord Cable Manager Tray	5R2UX-CMT
Universal Opt-X® Clamp Kit, single cable grommet (mounts to Rear Cable Manager)	5RCMP-KIT
Universal Opt-X Clamp Kit, multiple cable grommet (mounts to Rear Cable Manager)	5RCMP-KT2
Universal Clamp Kit, single and multiple cable grommet (for rack mounting)	5RCMR-KIT

For further support information, visit [leviton.com/ns/support](http://leviton.com/ns/support)



**NETWORK SOLUTIONS GLOBAL HEADQUARTERS**

Bothell, WA, USA | [leviton.com/ns](http://leviton.com/ns)  
 (800) 824 3005 / +1 (425) 486 2222 | [appeng@leviton.com](mailto:appeng@leviton.com)

**NETWORK SOLUTIONS EUROPEAN HEADQUARTERS**

Glenrothes, UK | [leviton.com/ns/emea](http://leviton.com/ns/emea)  
 +44 (0) 1592 772124 | [customerserviceeu@leviton.com](mailto:customerserviceeu@leviton.com)

Leviton is dedicated to designing, developing and manufacturing sustainable high-performance structured cabling and speciality cabling solutions. Network Solutions products are available worldwide in over 100 countries. Visit us online to learn more.