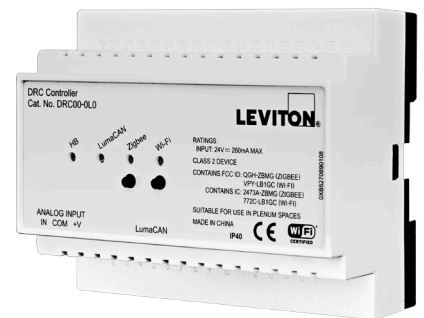


GreenMAX® DRC Demand Response

Enable demand response signal receipt and response with the GreenMAX® DRC Room Control System.

Demand response allows facilities to receive BMS or ADR signals from utility companies to reduce lighting loads. These demand response events are based on times of heavy usage, and by reducing energy drain during those times, buildings can save on costs—and meet code requirements. Demand response is required by 2019 Title 24, Part 6 for commercial spaces larger than 10,000 sq ft. The GreenMAX DRC Room Control System receives and responds to demand response signals for compliance and savings.



CHALLENGE

Facility requires lighting controls that can fully connect with building system demand response signals.

- Must provide demand response capabilities
- Desires advanced lighting control capabilities that are flexible over time, and can be re-configured with minimal cost and disruption to operations
- Facility contains 0-10V LED lighting

SOLUTION

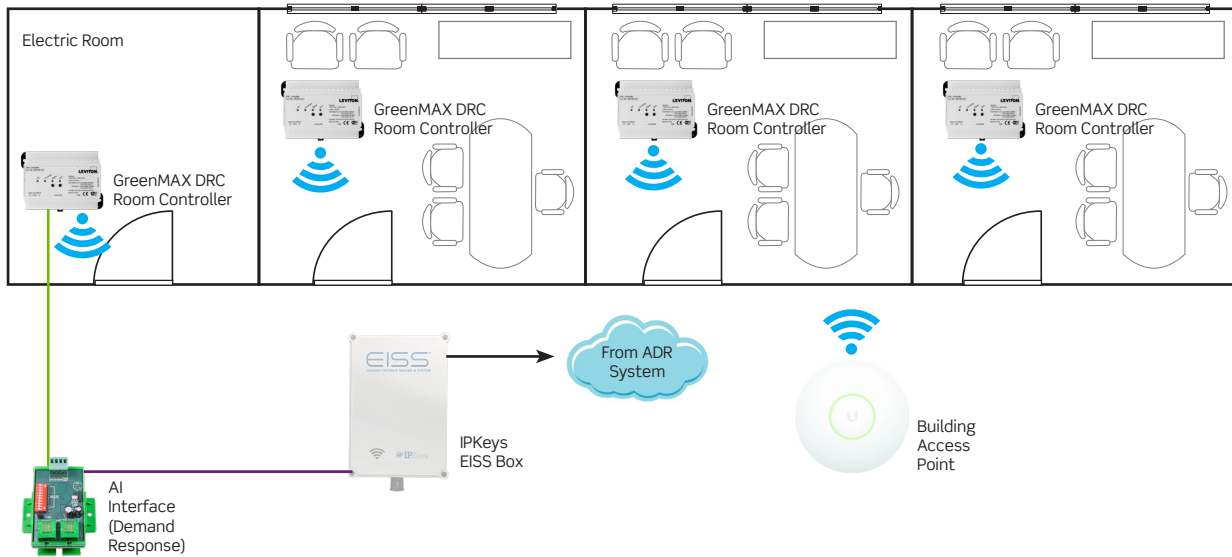
The GreenMAX DRC Room Control System incorporates demand response directly into its lighting control capabilities.

- Responds to demand response signals to dim or switch lighting, allowing for energy savings and code compliance
- Allows for occupancy/vacancy sensing, 0-10V dimming, daylight harvesting, partial-ON, partial-OFF and demand response control, which is all zoned and commissioned through the smart device App—recommission and reconfigure as needed from the palm of your hand
- Provides full, smooth, continuous dimming and control capabilities for 0-10V LED fixture lighting
- Can be used to comply with 2019 Title 24, Part 6 demand response requirements





GREENMAX DRC DEMAND RESPONSE SOLUTION

1. Demand response signal received by DRC Room Controller in electrical room from ADR system
2. Load shed message distributed throughout facility over WiFi network
3. All load control devices go to prescribed load shed target reduction value
4. ADR system signals end of load shed period for system, reversing to normal operation

NOTE: Distributed over WiFi network. Call for more information on demand response distributed over CAN network. Demand response usually provided by others. IPKeys EISS Box can be provided upon request for direct interface to demand response system. Talk to your Leviton representative for more information.



WHAT YOU WILL NEED

GREENMAX DRC DEMAND RESPONSE SOLUTION		QTY.
	GreenMAX DRC Room Controller DRC07-ED0 The “brain” of the GreenMAX DRC Room Control system	1 per room
	IPKeys EISS Box (Or Equivalent) Provided by Leviton or by others, contact Leviton for more information	1
	AI Interface DRID0-C02 Serving as demand response interface for the system	1
	Building Access Point Provided by others	1

For more information on GreenMAX DRC, visit Leviton.com/greenmaxdrc.

Leviton Manufacturing Co., Inc. Energy Management, Controls and Automation
20497 SW Teton Avenue, Tualatin, OR 97062 tel 503-404-5500 fax 503-404-5600
tech line (8:30AM-7:30PM ET Monday-Friday) 800-824-3005

Leviton Manufacturing Co., Inc. Global Headquarters
201 North Service Road, Melville, NY 11747-3138 tel 800-323-8920 fax 800-832-9538
tech line (8:30AM-7:00PM ET Monday-Friday) 800-824-3005

Visit our website at: www.leviton.com/greenmaxdrc
© 2019 Leviton Manufacturing Co. Inc. All rights reserved. Subject to change without notice.

LES-G-10381/F19-tb

