

GreenMAX® DRC Room Control System

Change the Way You Design Lighting Control Systems

Lighting Evolved

Confidently design and specify a secure, simple and scalable distributed control system with GreenMAX DRC Wired or Wireless solutions. GreenMAX DRC improves lighting control at every level of the process—easy specification and design, low-cost and painless installation, and convenient end user control capability stem can manage different types of lighting for virtually any application. Add additional components to modify or expand the system and reconfigure rooms and zones using a smart device.

Fully Integrated Solution

- Integrates with Sapphire™ Touch Screens and GreenMAX Relay Panels into one system
- Wireless Keypad Room Controller connects to Intellect-enabled fixtures and Leviton wireless devices — all fully configurable via the GreenMAX DRC App

Antimicrobial Keypads & Wallplates

- GreenMAX DRC Digital Keypads and Wireless Keypad Room Controllers feature antimicrobial treated plastic to help keep its surfaces cleaner and prevent microorganisms from degrading the product. This product contains an antimicrobial agent to inhibit the growth of mold, mildew, fungus and odor-causing bacteria that cause discoloration, staining, deterioration or corrosion on the surface of the device in between normal cleanings.

Room Agnostic Distributed System

- Each room operates independently of others and is not dependent on network processors or centralized controllers for operation

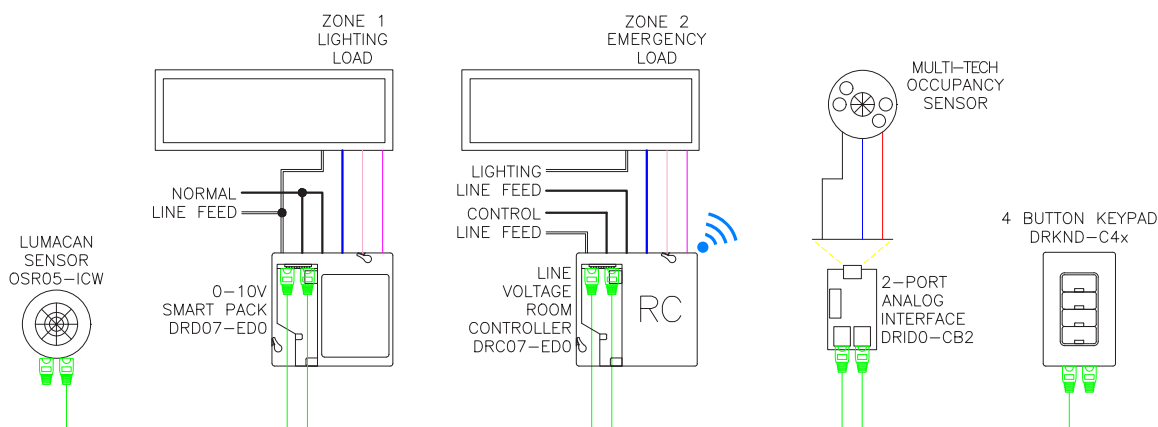
Ladderless Commissioning

- Fully configurable from the GreenMAX DRC App for effortless setup of system preferences, group and scene settings, daylighting behaviors, and more

One-stop Code Compliance

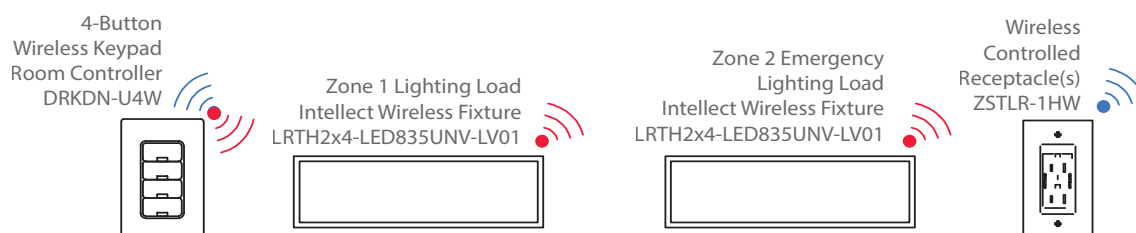
- Can be used to comply with ASHRAE 90.1, IECC, and 2019 Title 24, Part 6 multi-level lighting, occupancy/vacancy sensing, partial-ON, partial-OFF, daylighting, demand response, and receptacle control requirements

GreenMAX DRC Wired Line Voltage Room Controller 2-Zone Plus Daylighting, Typical



Depending on manufacture date, pink wire may be gray

GreenMAX DRC Wireless Keypad Room Controller 2-Zone Plus Daylighting, Typical



Designing a GreenMAX DRC System

Wired

Room Controllers

- The “brain” of the GreenMAX DRC Room Control system
- Manages all the energy management functions in the space



GreenMAX DRC App

Line Voltage Room Controllers

Low Voltage Room Controller

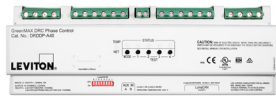
Download at Leviton.com/apps

DRC07-ED0 / DRC07-E30

DRC00-0L0

Load Controls

- Integrate lighting fixtures into the GreenMAX DRC Room Control system
- Incorporates various lighting loads seamlessly into the same GreenMAX DRC Room Control System



Smart Pack

Phase Control Dimmers

DALI Gateway

LumaCAN Gateway

DRD07-ED0 / DRD07-E30

DRDDP-A20/DRDDP-A40

DRCDD-0L0

NP00G-000

Sensors

- Gather information from the space and send consistent feedback to the GreenMAX DRC Room Controller
- Allow for daylighting, occupancy/vacancy sensing, etc.



Digital Sensor

Analog Sensors

Analog Interface (AI)
(for use with Analog Sensors)

OSR05-ICW

Visit Leviton.com/sensors

DRID0-A40

User Interfaces

- Allow users to access system features either manually from within the room or remotely
- Recall scenes, zones, dimming/switching levels, and other previously configured information



Digital Keypads

Sapphire™ Touch Screen

DRKDN-Cxx

TS007-000

Wireless

Keypad Room Controllers

- The “brain” of a GreenMAX DRC Wireless Room Control System when used with Wireless devices
- Manages all the energy management functions in the space with no extra wires



GreenMAX DRC App

Wireless Keypad Room Controllers

Download at Leviton.com/apps

DRKDN-Uxx

Load Control Devices

- Expand GreenMAX DRC capabilities with wireless devices. Add wireless control to any ON/OFF, 0-10V dimming or phase cut dimming device.



20A
ON/OFF
Switching
Power Pack

10A 0-10V
Dimming
Power Pack

800W
Phase Cut
Dimming
Power Pack

10A
ON/OFF
Decora®
Wall Switch

0-10V
Decora®
Wall
Dimmer,
120-277V

10A 0-10V
Decora®
Wall
Dimmer,
347V

24V 0-10V
Decora®
Wall
Dimmer

1000W
Dimmer

Marked
Controlled
Receptacle

LU20S-DNW

LU107-DNW

LU04P-1NW

ZS10S-D0Z

ZS057-D0Z

ZS057-30Z

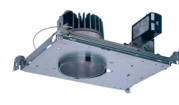
ZS057-ALZ

DL1KD-1BZ

ZSTLR-1HW

Intellect-Enabled Fixtures by Leviton Lighting Brands and Other Manufacturers*

- Virtually any fixture can be Intellect-enabled with wireless occupancy/vacancy sensing and dimming control



VISCOR

ConTech Lighting

Brichwood
Lighting

Intense
Lighting

ALRM/
ALRA/ALRB

LRTG

LRTH

LCOMN SQ

R4NCIE

R4SQNCIE

R6NCIE

JAKE-LED

SS4G4DR

* Contact factory for additional information.

Sensors

- Gather information from the space and send consistent feedback to the GreenMAX DRC Keypad Room Controller
- Allow for daylighting, occupancy/vacancy sensing, etc.



Wireless PIR Occupancy Sensors

Wireless Photocell

ZSC04-INW/ ZSC15-INW

LURPC-01W

Designing a GreenMAX® DRC System

How to Put It All Together

Simple Application Rules

- One Room Controller per room
- 50 network devices per Room Controller
- Network rooms together via Wi-Fi

1 Determine what types of **LOADS** you want to control

- 0-10V dimming loads
- Phase, DALI or DMX loads

2 Select the appropriate **ROOM CONTROLLER**

- For 0-10V dimming loads, use the Line Voltage Room Controller (DRC07-ED0)
- For phase, DALI or DMX loads, use the Low Voltage Room Controller (DRC00-OL0)

3 Select your **LOAD CONTROL DEVICE(S)** as needed

- For 0-10V dimming loads, add Smart Packs (DRD07-ED0)
- For forward and reverse phase dimming loads, add a Phase Control Dimmer (DRDDP-A40)
- For DALI loads, add a DALI Gateway (DRCDD-OL0)
- For DMX loads, add a LumaCAN Gateway (NP00G-000)

4 Add **SENSORS** as needed

- For occupancy/vacancy sensing and daylight harvesting, add a Digital Sensor (OSR05-ICW)
 - Ideal for spaces with major motion
- For occupancy/vacancy sensing, add an analog sensor (Leviton.com/sensors)
 - Ideal for larger spaces that require multi-tech coverage
 - Analog Interface (DRID0-A40) required

5 Select your **USER INTERFACE(S)**

- Use one or more of the following:
 - 1, 2, 4 or 8-Button Keypads with custom engraving available (DRKDN-CxW)
 - Sapphire Touch Screen with customizable buttons and sliders (TS007-000)
 - GreenMAX DRC App

6 For a **NETWORKED SYSTEM**, connect rooms with Wi-Fi access points (commonly provided by others, but can be provided by Leviton)

Leviton Manufacturing Co., Inc. Lighting & Controls

10385 SW Avery Street, Tualatin, OR 97062 **tel** 800-736-6682 **tech line** (6:00AM-4:00PM PT Mon-Fri) 800-959-6004

Leviton Manufacturing Co., Inc. Global Headquarters

201 North Service Road, Melville, NY 11747-3138 **tel** 800-323-8920 **tech line** (8:00AM-10:00PM ET Mon-Fri, 9:00AM-7:00PM ET Sat, 9:00AM-5:00PM ET Sun) 800-824-3005

Visit our Website at: www.leviton.com/greenmaxdrc

©2022 Leviton Manufacturing Co., Inc. All rights reserved. Subject to change without notice.

LES-G-10398D/H22-aa
REV AUG 2022