

## How to download and review station programming

**Product:** D8000 Product Family      **Article ID:** 040909-RL/AM-01

**Date:** April 09, 2009

**Summary:** This article explains the method for downloading and reviewing station programming

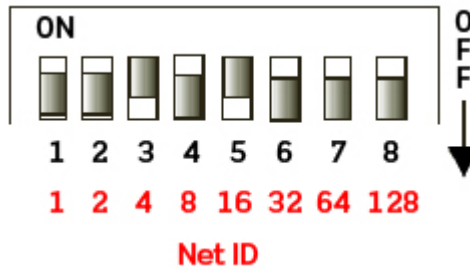
**Information: Prerequisite:** Connection from PC to Lumanet Network via NPC or RS232 programming port.

**STEP 1:** Remove control station from the wall.

**STEP 2:** Locate dipswitch block on rear of the station. The switch levers are numbered 1-8. The switch is set to the binary representation of the ID number.

**Lever =Value**

- 1 = 1
- 2 = 2
- 3 = 4
- 4 = 8
- 5 = 16
- 6 = 32
- 7 = 64
- 8 = 128



**STEP 3:** Add the value of each lever in the “ON” position to determine the ID number in decimal form.

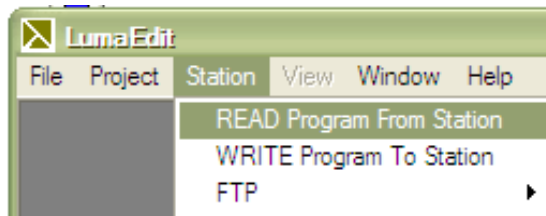
**For example:**

To set the address to 39, the following switches need to be in the “ON” position:  
 1, 2, 3, 6 = 1 + 2 + 4 + 32 = 39

**STEP 4:** Open Luma-Edit program (available at: [www.leviton.com/software](http://www.leviton.com/software))



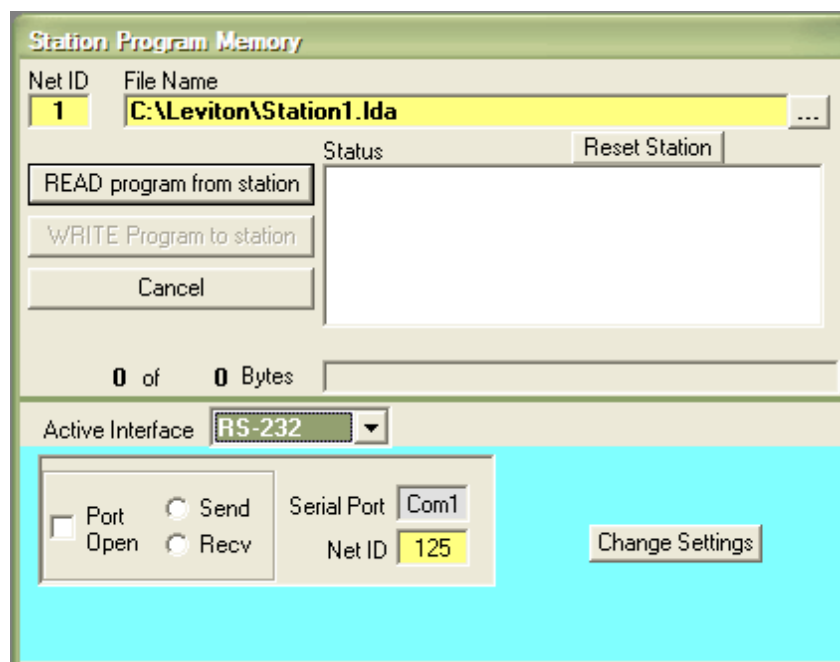
**STEP 5:** Click on Station menu and then choose READ Program From Station.



**STEP 6:** (a) At this time make sure that NET ID in the upper left hand corner is set to the proper ID of the station that you are going to READ the information from. (b) Active interface should be RS-232 or NPC depending on the interface being used.

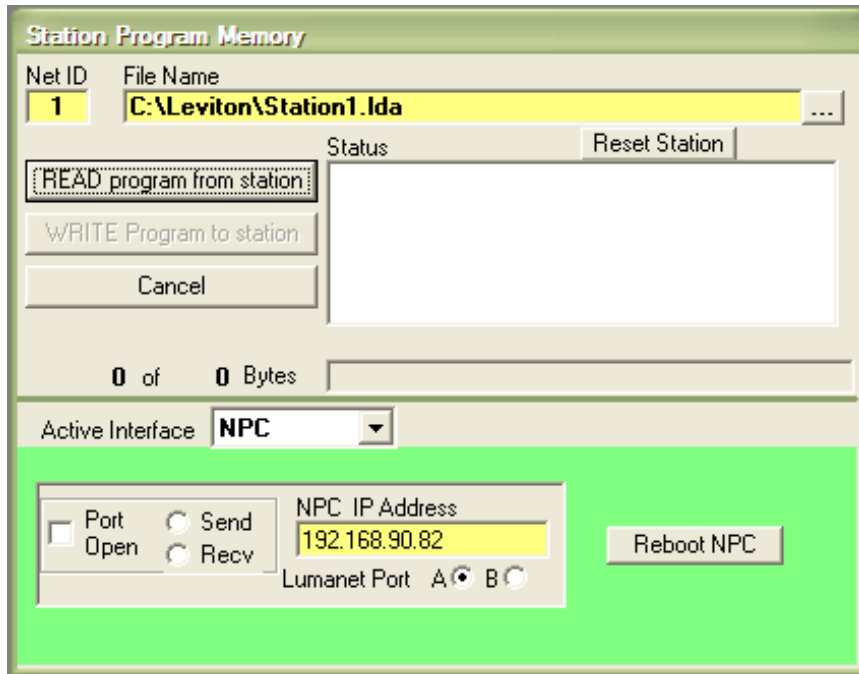
**If using RS232:**

- a) Serial Port should be Com 1 – Make sure the port you are on the computer is Com 1 or one of the other available ports.
- b) The NET ID just below Serial Port should be the ID of the RS-232 port.
- c) Click on Read Program from Station button.

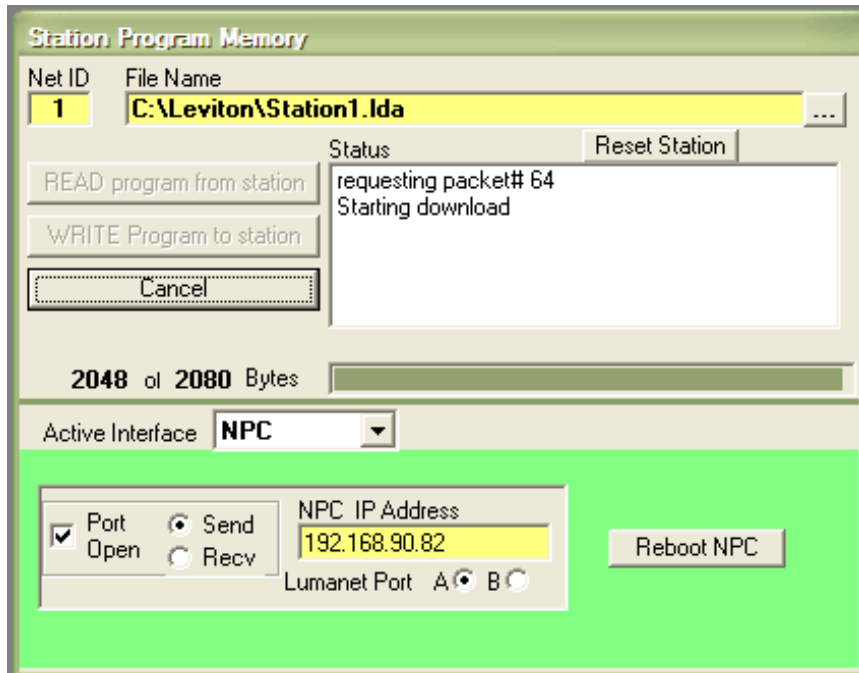


**If using NPC:**

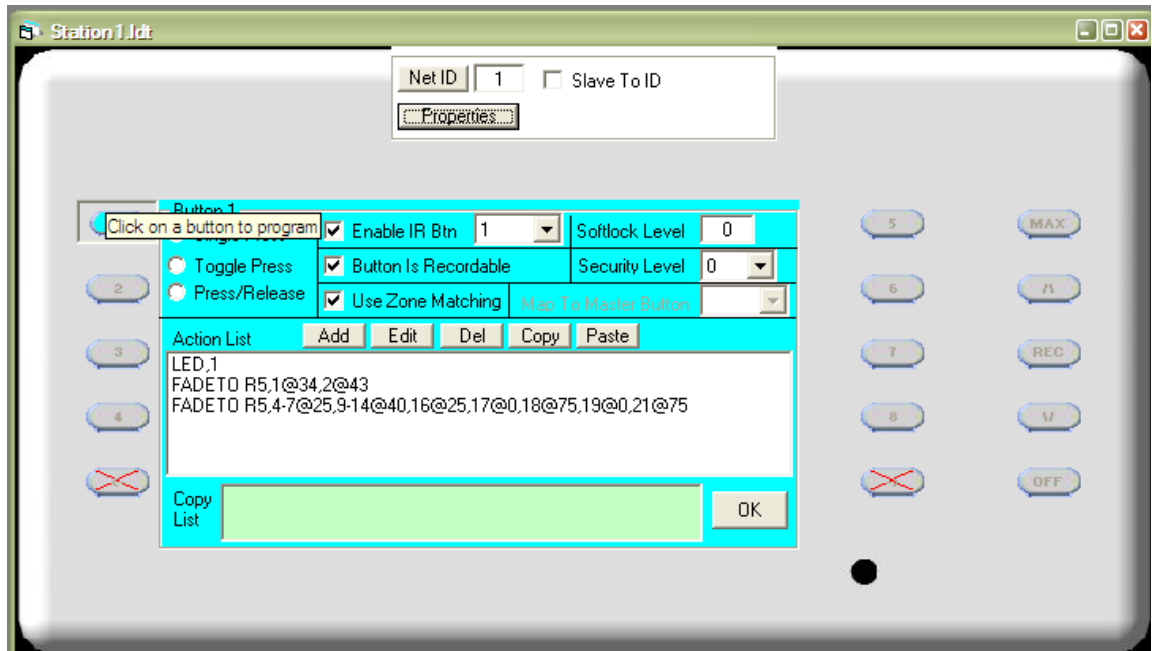
- a) Type in the IP address of the NPC you are communicating thru.
- b) Press the READ Program from station button.
- c) Press “OK” to reset the station when it prompts you.



**STEP 7:** Wait for station information to download to the computer.



**STEP 8:** Click on one of the buttons that do not have an “x” over the button to review the setting in the button, refer to Help file for information on commands available.



**Contact:** If you have any questions or concerns, please call LMS technical support at (800) 959-6004.