

Wetguard[®] Watertight Wiring Devices

ORDERING GUIDE & COMPETITIVE CROSS-REFERENCE



Straight Blade Devices

WETGUARD PLUGS & CONNECTORS ARE IP69K RATED
WHEN CAPS ARE ATTACHED (CAPS LISTED ON PG. 10) IP69K

POLE/WIRES	AMPS	VOLTS	NEMA	PLUG - STRAIGHT BLADE					
				LEVITON	WOODHEAD	HUBBELL	COOPER	ERICSON	P & S
2-Pole 2-Wire	15	125 V	1-15	14W04	14W04	-	-	-	-
2-Pole 3-Wire Grounding	15	125 V	5-15	14W47 * ³	14W47	HBL14W47A	14W47	1510-PW6P	14W47
		250 V	6-15	14W49	14W49	HBL14W49	14W49	1514-PW6P	14W49
		277 VAC	7-15	14W34	14W34	-	-	-	-
		347 V	24-15	14W15	-	-	-	-	-
	20	125 V	5-20	14W33	14W33	HBL14W33A	14W33	1512-PW6P	14W33
		250 V	6-20	14W48	14W48	HBL14W48	14W48	1516-PW6P	14W48
3-Pole 3-Wire Non-Grounding	15	125 V	Non-NEMA	14W07	14W07	HBL14W07	-	1507-PW6P	14W07
	10	250 V							

POLE/WIRES	AMPS	VOLTS	NEMA	CONNECTOR - STRAIGHT BLADE					
				LEVITON	WOODHEAD	HUBBELL	COOPER	ERICSON	P & S
2-Pole 2-Wire	15	125 V	1-15	15W04	15W04	-	-	-	-
2-Pole 3-Wire Grounding	15	125 V	5-15	15W47 * ³	15W47	HBL15W47A	15W47	1610-CW6P	15W47
		250 V	6-15	15W49	15W49	HBL15W49	15W49	1614-CW6P	15W49
		277 VAC	7-15	15W34	15W34	-	-	-	-
		347 VAC	24-15	15W16	-	-	-	-	-
	20	125 V	5-20	15W33	15W33	HBL15W33A	15W33	1612-CW6P	15W33
		250 V	6-20	15W48	15W48	HBL15W48	15W48	1616-CW6P	15W48
3-Pole 3-Wire Non-Grounding	15	125 V	Non-NEMA	15W07	15W07	HBL15W07	-	1607-CW6P	15W07
	10	250 V							

POLE/WIRES	AMPS	VOLTS	NEMA	SINGLE OUTLET - STRAIGHT BLADE						
				LEVITON	WOODHEAD	HUBBELL	COOPER	ERICSON	P & S	
2-Pole 2-Wire	15	125 V	1-15	90W04-S		60W04	-	-	-	-
2-Pole 3-Wire Grounding	15	125 V	5-15	90W47-S	60W47 ¹	60W47	HBL60W47	60W47	2715-FS10	60W47
		250 V	6-15	90W49-S	60W49 ¹	60W49	HBL60W49	60W49	2715-FS14	60W49
	20	125 V	5-20	90W33-S	60W33 ¹	60W33	HBL60W33	60W33	2715-FS12	60W33
		250 V	6-20	90W48-S	60W48 ¹	60W48	HBL60W48	60W48	2715-FS16	60W48
3-Pole 3-Wire Non-Grounding	15	125 V	Non-NEMA	90W07-S		60W07	-	-	2715FS07	60W07
	10	250 V								

* to specify black, add "-B" to suffix of ordering number.
¹ Box mount single receptacle with Wetguard cover and gasket.
³ Replacement interior available. To order, add "-IN" to catalog number (Ex: 14W47-IN).

Straight Blade Devices

POLE/WIRES	AMPS	VOLTS	NEMA	DUPLEX OUTLET					
				LEVITON	WOODHEAD	HUBBELL	COOPER	ERICSON	P & S
2-Pole 2-Wire	15	125 V	1-15	80W04-D	60W04DPLX	-	-	-	-
2-Pole 3-Wire Grounding	15	125 V	5-15	80W47-D	60W47DPLX	HBL60W47D	60W47DPLX	-	60W47DPLX
		250 V	6-15	80W49-D	60W49DPLX	HBL60W49D	60W49DPLX	-	60W49DPLX
	20	277 VAC	7-15	-	60W34DPLX	-	-	-	-
		125 V	5-20	-	60W33DPLX	HBL60W33D	60W33DPLX	-	-
3-Pole 3-Wire Non-Grounding	15	125 V	Non-NEMA	80W07-D	60W07DPLX	-	-	-	-
	10	250 V							

POLE/WIRES	AMPS	VOLTS	NEMA	SINGLE INLET - STRAIGHT BLADE					
				LEVITON	WOODHEAD	HUBBELL	COOPER	ERICSON	P & S
2-Pole 2-Wire	15	125 V	1-15	59W04	59W04	-	-	-	-
2-Pole 3-Wire Grounding	15	125 V	5-15	59W47	59W47	-	-	-	-
		250 V	6-15	59W49	59W49	-	-	-	-
	20	125 V	5-20	59W33	59W33	-	-	-	-
		250 V	6-20	59W48	59W48	-	-	-	-
3-Pole 3-Wire Non-Grounding	15	125 V	Non-NEMA	59W07	59W07	-	-	-	-
	10	250 V							

POLE/WIRES	AMPS	VOLTS	NEMA	CONNECTOR FOR SINGLE INLET - STRAIGHT BLADE					
				LEVITON	WOODHEAD	HUBBELL	COOPER	ERICSON	P & S
2-Pole 2-Wire	15	125 V	1-15	79W04-C	15W04MB	-	-	-	-
2-Pole 3-Wire Grounding	15	125 V	5-15	79W47-C	15W47MB	-	-	-	-
		250 V	6-15	79W49-C	15W49MB	-	-	-	-
	20	125 V	5-20	79W33-C	15W33MB	-	-	-	-
		250 V	6-20	79W48-C	15W48MB	-	-	-	-
3-Pole 3-Wire Non-Grounding	15	125 V	Non-NEMA	79W07-C	15W07MB	-	-	-	-
	10	250 V							

* to specify black, add "-B" to suffix of ordering number.

FD Boxes

DESCRIPTION		LEVITON	WOODHEAD	HUBBELL	COOPER	ERICSON	P & S
1-Gang Box	Non-Metallic, ½" knockouts	FDBX1-Y	452CR	-	-	-	-
	Non-Metallic, ¾" knockouts		453CR	HBL60CM83A	-	-	-
	Non-Metallic, 1" knockouts		454CR	HBL60CM84A	-	-	-
	Stainless Steel, no knockouts	FDSS1*	-	-	-	-	-
2-Gang Box	Non-Metallic, ½" knockouts	FDBX2-Y	-	-	-	-	-
	Non-Metallic, ¾" knockouts		-	-	-	-	-
	Non-Metallic, 1" knockouts		-	-	-	-	-
	Stainless Steel, no knockouts	FDSS2*	-	-	-	-	-
3-Gang Box	Non-Metallic, ½" knockouts	FDBX3-Y	-	-	-	-	-
	Non-Metallic, ¾" knockouts		-	-	-	-	-
	Non-Metallic, 1" knockouts		-	-	-	-	-

Leviton non-metallic FD Boxes are also available in gray. To specify gray, change suffix from "Y" to "GY".

* Stainless Steel Boxes are compatible with all Wetguard covers EXCEPT duplex receptacle cover.

Locking Devices

WETGUARD PLUGS & CONNECTORS ARE IP69K RATED
WHEN CAPS ARE ATTACHED (CAPS LISTED ON PG. 10) IP69K

POLE/WIRES	AMPS	VOLTS	NEMA	PLUG - LOCKING					
				LEVITON	WOODHEAD	HUBBELL	COOPER	ERICSON	P & S
2-Pole 2-Wire	15	125 V	L1-15	24W04	24W04	-	-	-	-
	20	250 V	L2-20	26W07	26W07	-	-	-	-
2-Pole 3-Wire Grounding	15	125 V	L5-15	24W47 ^{*3}	24W47	HBL24W47A	24W47	1520-PW6P	24W47
		250 V	L6-15	24W49	24W49	HBL24W49	24W49	1522-PW6P	24W49
		277 VAC	L7-15	24W34	24W34	HBL24W34	24W34	1524-PW6P	24W34
	20	125 V	L5-20	26W47 ^{*3}	26W47	HBL26W47	L520PW	2310-PW6P	26W47
		250 V	L6-20	26W48 [*]	26W48	HBL26W48	L620PW	2312-PW6P	26W48
		277 VAC	L7-20	26W49	26W49	HBL26W49	L720PW	2314-PW6P	26W49
		347 V	L24-20	22W07	-	-	-	-	
3-Pole 4-Wire Grounding	20	125/250 V	L14-20	26W74 ^{*3}	26W74	HBL26W74	L1420PW	2320-PW6P	26W74
		3Ø 250 V	L15-20	26W75 [*]	26W75	HBL26W75	L1520PW	2322-PW6P	26W75
		3Ø 480 V	L16-20	26W76 ^{*3}	26W76	HBL26W76	L1620PW	2324-PW6P	26W76
3-Pole 3-Wire Non-Grounding	15	125 V	Non-NEMA	24W07	24W07	-	-	-	-
	10	250 V							
3-Pole 3-Wire Grounding	20	125/250 V	Non-NEMA	26W08	26W08	HBL26W08	9965PW	2316-PW6P	26W08
		250 V ²	Non-NEMA	26W08-G	26W08G	-	-	2317-PW6P	-
4-Pole 4-Wire Non-Grounding	20	3ØY 120/208 V	Non-NEMA	26W09	26W09	HBL26W09	7411PW	-	-
4-Pole 5-Wire Grounding	20	3ØY 120/208 V	L21-20	26W81 [*]	26W81	HBL26W81	L2120PW	-	-
		3ØY 277/480 V	L22-20	26W82	26W82	HBL26W82	L2220PW	-	-
		3ØY 347/600 V	L23-20	26W83	26W83	HBL26W83	L2320PW	-	-
2-Pole 3-Wire Grounding	30	125 V	L5-30	28W47 [*]	28W47	HBL28W47	L530PW	2510-PW6P	28W47
		250 V	L6-30	28W48	28W48	HBL28W48	L630PW	2512-PW6P	28W48
		277 VAC	L7-30	28W49	28W49	HBL28W49	L730PW	2514-PW6P	28W49
3-Pole 4-Wire Grounding	30	125/250 V	L14-30	28W74 ³	28W74	HBL28W74	L1430PW	2520-PW6P	28W74
		3Ø 250 V	L15-30	28W75 ³	28W75	HBL28W75	L1530PW	2522-PW6P	28W75
		3Ø 480 V	L16-30	28W76 ^{*3}	28W76	HBL28W76	L1630PW	2524-PW6P	28W76
		3ØY 600 V	L17-30	28W77	28W77	HBL28W77	L1730PW	2526-PW6P	28W77
3-Pole 3-Wire Non-Grounding	30	125/250 V	Non-NEMA	28W08	28W08	HBL28W08	3331PW	2516-PW6P	28W08
4-Pole 4-Wire Non-Grounding	30	3ØY 120/208 V	Non-NEMA	28W09	28W09	HBL28W09	3431PW	2528-PW6P	28W09
4-Pole 5-Wire Non-Grounding	20	250 V	Non-NEMA	26W10	26W10	-	-	-	-
	10	600 VAC							
4-Pole 5-Wire Grounding	30	3ØY 120/208 V	L21-30	28W81	28W81	HBL28W81	L2130PW	-	-
		3ØY 277/480 V	L22-30	28W82	28W82	HBL28W82	L2230PW	-	-
		3ØY 347/600 V	L23-30	28W83	28W83	HBL28W83	L2330PW	-	-

* To specify black, add "-B" to suffix of ordering number

² 10 A 600 VAC

³ Replacement interior available. To order, add "-IN" to catalog number (Ex: 14W47-IN).

Locking Devices

WETGUARD PLUGS & CONNECTORS ARE IP69K RATED
WHEN CAPS ARE ATTACHED (CAPS LISTED ON PG. 10) IP69K

POLE/WIRES	AMPS	VOLTS	NEMA	CONNECTOR - LOCKING (Mates with Plug)					
				LEVITON	WOODHEAD	HUBBELL	COOPER	ERICSON	P & S
2-Pole 2-Wire	15	125 V	L1-15	25W04	25W04	-	-	-	-
	20	250 V	L2-20	27W07	27W07	-	-	-	-
2-Pole 3-Wire Grounding	15	125 V	L5-15	25W47 * ³	25W47	HBL25W47A	25W47	1620-CW6P	25W47
		250 V	L6-15	25W49	25W49	HBL25W49	25W49	1622-CW6P	25W49
		277 VAC	L7-15	25W34	25W34	HBL25W34	25W34	1624-CW6P	25W34
	20	125 V	L5-20	27W47 * ³	27W47	HBL27W47	L520CW	2410-CW6P	27W47
		250 V	L6-20	27W48 *	27W48	HBL27W48	L620CW	2412-CW6P	27W48
		277 VAC	L7-20	27W49	27W49	HBL27W49	L720CW	2414-CW6P	27W49
		347 V	L24-20	23W07	-	-	-	-	
3-Pole 4-Wire Grounding	20	125/250 V	L14-20	27W74 * ³	27W74	HBL27W74	L1420CW	2420-CW6P	27W74
		3Ø 250 V	L15-20	27W75 *	27W75	HBL27W75	L1520CW	2422-CW6P	27W75
		3Ø 480 V	L16-20	27W76 * ³	27W76	HBL27W76	L1620CW	2424-CW6P	27W76
3-Pole 3-Wire Non-Grounding	15	125 V	Non-NEMA	25W07	25W07	-	-	-	-
	10	250 V							
3-Pole 3-Wire Grounding	20	125/250 V	Non-NEMA	27W08	27W08	HBL27W08	7314CW	2416-CW6P	27W08
		250 V ²	Non-NEMA	27W08-G	27W08G	-	-	2417-CW6P	-
4-Pole 4-Wire Non-Grounding	20	3ØY 120/208 V	Non-NEMA	27W09	27W09	HBL27W09	7413CW	-	-
4-Pole 5-Wire Grounding	20	3ØY 120/208 V	L21-20	27W81 *	27W81	HBL27W81	L2120CW	-	-
		3ØY 277/480 V	L22-20	27W82	27W82	HBL27W82	L2220CW	-	-
		3ØY 347/600 V	L23-20	27W83	27W83	HBL27W83	L2320CW	-	-
2-Pole 3-Wire Grounding	30	125 V	L5-30	29W47 *	29W47	HBL29W47	L530CW	2610-CW6P	29W47
		250 V	L6-30	29W48	29W48	HBL29W48	L630CW	2612-CW6P	29W48
		277 VAC	L7-30	29W49	29W49	HBL29W49	L730CW	2614-CW6P	29W49
3-Pole 4-Wire Grounding	30	125/250 V	L14-30	29W74 ³	29W74	HBL29W74	L1430CW	2620-CW6P	29W74
		3Ø 250 V	L15-30	29W75 ³	29W75	HBL29W75	L1530CW	2622-CW6P	29W75
		3Ø 480 V	L16-30	29W76 * ³	29W76	HBL29W76	L1630CW	2624-CW6P	29W76
		3ØY 600 V	L17-30	29W77	29W77	HBL29W77	L1730CW	2626-CW6P	29W77
3-Pole 3-Wire Non-Grounding	30	125/250 V	Non-NEMA	29W08	29W08	HBL29W08	3333CW	2616-CW6P	29W08
4-Pole 4-Wire Non-Grounding	30	3ØY 120/208 V	Non-NEMA	29W09	29W09	HBL29W09	3433CW	2628-CW6P	29W09
4-Pole 5-Wire Non-Grounding	20	250 V	Non-NEMA	27W10	27W10	-	-	-	-
	10	600 VAC							
4-Pole 5-Wire Grounding	30	3ØY 120/208 V	L21-30	29W81	29W81	HBL29W81	L2130CW	-	-
		3ØY 277/480 V	L22-30	29W82	29W82	HBL29W82	L2230CW	-	-
		3ØY 347/600 V	L23-30	29W83	29W83	HBL29W83	L2330CW	-	-

* To specify black, add "-B" to suffix of ordering number

² 10 A 600 VAC

³ Replacement interior available. To order, add "-IN" to catalog number (Ex: 14W47-IN).

Locking Devices

POLE/WIRES	AMPS	VOLTS	NEMA	SINGLE OUTLET - LOCKING						
				LEVITON	WOODHEAD	HUBBELL	COOPER	ERICSON	P & S	
2-Pole 2-Wire	15	125 V	L1-15	95W04-S	-	65W04	-	-	-	-
	20	250 V	L2-20	97W07-S	-	67W07	-	-	-	-
2-Pole 3-Wire Grounding	15	125 V	L5-15	95W47-S	65W47 ¹	65W47	HBL65W47	65W47	2715-FS20	65W47
		250 V	L6-15	95W49-S	65W49 ¹	65W49	HBL65W49	65W49	2715-FS22	65W49
		277 VAC	L7-15	95W34-S	65W34 ¹	65W34	HBL65W34	65W34	2715-FS24	65W34
	20	125 V	L5-20	97W47-S	67W47 ¹	67W47	HBL67W47	L520RW	2820-FS10	67W47
		250 V	L6-20	97W48-S	67W48 ¹	67W48	HBL67W48	L620RW	2820-FS12	67W48
		277 VAC	L7-20	97W49-S	67W49 ¹	67W49	HBL67W49	L720RW	2820-FS14	67W49
	347 V	L24-20	93W07-S	-	-	-	-	-	-	
3-Pole 4-Wire Grounding	20	125/250 V	L14-20	97W74-S	67W74 ¹	67W74	HBL67W74	L1420RW	2920-FS20	67W74
		3Ø 250 V	L15-20	97W75-S	67W75 ¹	67W75	HBL67W75	L1520RW	2920-FS22	67W75
		3Ø 480 V	L16-20	97W76-S	67W76 ¹	67W76	HBL67W76	L1620RW	2920-FS24	67W76
3-Pole 3-Wire Non-Grounding	15	125 V	Non-NEMA	95W07-S	-	65W07	-	-	-	-
	10	250 V								
3-Pole 3-Wire Grounding	20	125/250 V	Non-NEMA	97W08-S	67W08 ¹	67W08	HBL67W08	7314RW	2820-FS16	67W08
		250 V ²	Non-NEMA	-	-	-	-	-	2820-FS17	-
4-Pole 4-Wire Non-Grounding	20	3ØY 120/208 V	Non-NEMA	97W09-S	67W09 ¹	67W09	HBL67W09	7413RW	-	-
4-Pole 5-Wire Grounding	20	3ØY 120/208 V	L21-20	97W81-S	67W81 ^{*1}	67W81	HBL67W81	L2120RW	-	-
		3ØY 277/480 V	L22-20	97W82-S	67W82 ¹	67W82	HBL67W82	L2220RW	-	-
		3ØY 347/600 V	L23-20	97W83-S	67W83 ¹	67W83	HBL67W83	L2320RW	-	-
2-Pole 3-Wire Grounding	30	125 V	L5-30	99W47-S	69W47 ¹	69W47	HBL69W47	L530RW	2830-FS10	69W47
		250 V	L6-30	99W48-S	69W48 ¹	69W48	HBL69W48	L630RW	2830-FS12	69W48
		277 VAC	L7-30	99W49-S	69W49 ¹	69W49	HBL69W49	L730RW	2830-FS14	69W49
3-Pole 4-Wire Grounding	30	125/250 V	L14-30	99W74-S	69W74 ¹	69W74	HBL69W74	L1430RW	2930-FS20	69W74
		3Ø 250 V	L15-30	99W75-S	69W75 ¹	69W75	HBL69W75	L1530RW	2930-FS22	69W75
		3Ø 480 V	L16-30	99W76-S	69W76 ¹	69W76	HBL69W76	L1630RW	2930-FS24	69W76
		3ØY 600 V	L17-30	99W77-S	69W77 ¹	69W77	HBL69W77	L1730RW	2930-FS26	69W77
3-Pole 3-Wire Non-Grounding	30	125/250 V	Non-NEMA	99W08-S	69W08 ¹	69W08	HBL69W08	3333RW	2830-FS16	69W08
4-Pole 4-Wire Non-Grounding	30	3ØY 120/208 V	Non-NEMA	99W09-S	69W09 ¹	69W09	-	3433RW	2930-FS28	69W09
4-Pole 5-Wire Non-Grounding	20	250 V	Non-NEMA	97W10-S	-	67W10	-	-	-	-
	10	600 VAC								
4-Pole 5-Wire Grounding	30	3ØY 120/208 V	L21-30	99W81-S	69W81 ¹	69W81	HBL69W81	L2130RW	-	-
		3ØY 277/480 V	L22-30	99W82-S	69W82 ¹	69W82	HBL69W82	L2230RW	-	-
		3ØY 347/600 V	L23-30	99W83-S	69W83 ¹	69W83	HBL69W83	L2330RW	-	-

* To specify black, add "-B" to suffix of ordering number
¹ Box mount single receptacle with Wetguard cover and gasket
² 10 A 600 VAC

Locking Devices

POLE/WIRES	AMPS	VOLTS	NEMA	DUPLIX OUTLET - LOCKING					
				LEVITON	WOODHEAD	HUBBELL	COOPER	ERICSON	P & S
2-Pole 2-Wire	15	125 V	L1-15	85W04-D	65W04DPLX	-	-	-	-
	20	250 V	L2-20	87W07-D	67W07DPLX	-	-	-	-
2-Pole 3-Wire Grounding	15	125 V	L5-15	85W47-D	65W47DPLX	HBL65W47D	65W47DPLX	-	65W47DPLX
		250 V	L6-15	85W49-D	65W49DPLX	HBL65W49D	65W49DPLX	-	65W49DPLX
		277 VAC	L7-15	85W34-D	65W34DPLX	HBL65W34D	65W34DPLX	-	65W34DPLX
	20	125 V	L5-20	-	-	-	-	-	-
		250 V	L6-20	-	-	-	-	-	-
		277 VAC	L7-20	-	-	-	-	-	-
3-Pole 4-Wire Grounding	20	347 V	L24-20	-	-	-	-	-	-
		125/250 V	L14-20	-	-	-	-	-	-
		3Ø 250 V	L15-20	-	-	-	-	-	-
3-Pole 3-Wire Non-Grounding	15	125 V	Non-NEMA	85W07-D	65W07DPLX	-	-	-	-
	10	250 V							
3-Pole 3-Wire Grounding	20	125/250 V	Non-NEMA	-	-	-	-	-	-
		250 V ²	Non-NEMA	-	-	-	-	-	-
4-Pole 4-Wire Non-Grounding	20	3ØY 120/208 V	Non-NEMA	-	-	-	-	-	-
4-Pole 5-Wire Grounding	20	3ØY 120/208 V	L21-20	-	-	-	-	-	-
		3ØY 277/480 V	L22-20	-	-	-	-	-	-
		3ØY 347/600 V	L23-20	-	-	-	-	-	-
2-Pole 3-Wire Grounding	30	125 V	L5-30	-	-	-	-	-	-
		250 V	L6-30	-	-	-	-	-	-
		277 VAC	L7-30	-	-	-	-	-	-
3-Pole 4-Wire Grounding	30	125/250 V	L14-30	-	-	-	-	-	-
		3Ø 250 V	L15-30	-	-	-	-	-	-
		3Ø 480 V	L16-30	-	-	-	-	-	-
		3ØY 600 V	L17-30	-	-	-	-	-	-
3-Pole 3-Wire Non-Grounding	30	125/250 V	Non-NEMA	-	-	-	-	-	-
4-Pole 4-Wire Non-Grounding	30	3ØY 120/208 V	Non-NEMA	-	-	-	-	-	-
4-Pole 5-Wire Non-Grounding	20	250 V	Non-NEMA	-	-	-	-	-	-
	10	600 VAC							
4-Pole 5-Wire Grounding	30	3ØY 120/208 V	L21-30	-	-	-	-	-	-
		3ØY 277/480 V	L22-30	-	-	-	-	-	-
		3ØY 347/600 V	L23-30	-	-	-	-	-	-

² 10 A 600 VAC

Locking Devices

POLE/WIRES	AMPS	VOLTS	NEMA	SINGLE INLET - LOCKING					
				LEVITON	WOODHEAD	HUBBELL	COOPER	ERICSON	P & S
2-Pole 2-Wire	15	125 V	L1-15	64W04	64W04	-	-	-	-
	20	250 V	L2-20	66W07	66W07	-	-	-	-
2-Pole 3-Wire Grounding	15	125 V	L5-15	64W47	64W47	-	-	-	-
		250 V	L6-15	64W49	64W49	-	-	-	-
		277 VAC	L7-15	64W34	64W34	-	-	-	-
	20	125 V	L5-20	66W47	66W47	-	-	-	-
		250 V	L6-20	66W48	66W48	-	-	-	-
		277 VAC	L7-20	66W49	66W49	-	-	-	-
		347 V	L24-20	68W29	-	-	-	-	
3-Pole 4-Wire Grounding	20	125/250 V	L14-20	66W74	66W74	-	-	-	-
		3Ø 250 V	L15-20	66W75	66W75	-	-	-	-
		3Ø 480 V	L16-20	66W76	66W76	-	-	-	-
3-Pole 3-Wire Non-Grounding	15	125 V	Non-NEMA	64W07	64W07	-	-	-	-
	10	250 V							
3-Pole 3-Wire Grounding	20	125/250 V	Non-NEMA	66W08	66W08	-	-	-	-
		250 V ²	Non-NEMA	-	-	-	-	-	-
4-Pole 4-Wire Non-Grounding	20	3ØY 120/208 V	Non-NEMA	66W09	66W09	-	-	-	-
4-Pole 5-Wire Grounding	20	3ØY 120/208 V	L21-20	66W81	66W81	-	-	-	-
		3ØY 277/480 V	L22-20	66W82	66W82	-	-	-	-
		3ØY 347/600 V	L23-20	66W83	66W83	-	-	-	-
2-Pole 3-Wire Grounding	30	125 V	L5-30	68W47	68W47	-	-	-	-
		250 V	L6-30	68W48	68W48	-	-	-	-
		277 VAC	L7-30	68W49	68W49	-	-	-	-
3-Pole 4-Wire Grounding	30	125/250 V	L14-30	68W74	68W74	-	-	-	-
		3Ø 250 V	L15-30	68W75	68W75	-	-	-	-
		3Ø 480 V	L16-30	68W76	68W76	-	-	-	-
		3ØY 600 V	L17-30	68W77	68W77	-	-	-	-
3-Pole 3-Wire Non-Grounding	30	125/250 V	Non-NEMA	68W08	68W08	-	-	-	-
4-Pole 4-Wire Non-Grounding	30	3ØY 120/208 V	Non-NEMA	68W09	68W09	-	-	-	-
4-Pole 5-Wire Non-Grounding	20	250 V	Non-NEMA	66W10	66W10	-	-	-	-
	10	600 VAC							
4-Pole 5-Wire Grounding	30	3ØY 120/208 V	L21-30	68W81	68W81	-	-	-	-
		3ØY 277/480 V	L22-30	68W82	68W82	-	-	-	-
		3ØY 347/600 V	L23-30	68W83	68W83	-	-	-	-


² 10 A 600 VAC

Locking Devices

POLE/WIRES	AMPS	VOLTS	NEMA	CONNECTOR - LOCKING (Mates with Inlet)					
				LEVITON	WOODHEAD	HUBBELL	COOPER	ERICSON	P & S
2-Pole 2-Wire	15	125 V	L1-15	74W04-C	25W04MB	-	-	-	-
	20	250 V	L2-20	76W07-C	27W07MB	-	-	-	-
2-Pole 3-Wire Grounding	15	125 V	L5-15	74W47-C	25W47MB	-	-	-	-
		250 V	L6-15	74W49-C	25W49MB	-	-	-	-
		277 VAC	L7-15	74W34-C	25W34MB	-	-	-	-
	20	125 V	L5-20	76W47-C	27W47MB	-	-	-	-
		250 V	L6-20	76W48-C	27W48MB	-	-	-	-
		277 VAC	L7-20	76W49-C	27W49MB	-	-	-	-
	347 V	L24-20	78W29-C	-	-	-	-	-	
3-Pole 4-Wire Grounding	20	125/250 V	L14-20	76W74-C	27W74MB	-	-	-	-
		3Ø 250 V	L15-20	76W75-C	27W75MB	-	-	-	-
		3Ø 480 V	L16-20	76W76-C	27W76MB	-	-	-	-
3-Pole 3-Wire Non-Grounding	15	125 V	Non-NEMA	74W07-C	25W07MB	-	-	-	-
	10	250 V							
3-Pole 3-Wire Grounding	20	125/250 V	Non-NEMA	76W08-C	27W08MB	-	-	-	-
		250 V ²	Non-NEMA	-	-	-	-	-	-
4-Pole 4-Wire Non-Grounding	20	3ØY 120/208 V	Non-NEMA	76W09-C	27W09MB	-	-	-	-
4-Pole 5-Wire Grounding	20	3ØY 120/208 V	L21-20	76W81-C	27W81MB	-	-	-	-
		3ØY 277/480 V	L22-20	76W82-C	27W82MB	-	-	-	-
		3ØY 347/600 V	L23-20	76W83-C	27W83MB	-	-	-	-
2-Pole 3-Wire Grounding	30	125 V	L5-30	78W47-C	29W47MB	-	-	-	-
		250 V	L6-30	78W48-C	29W48MB	-	-	-	-
		277 VAC	L7-30	78W49-C	29W49MB	-	-	-	-
3-Pole 4-Wire Grounding	30	125/250 V	L14-30	78W74-C	29W74MB	-	-	-	-
		3Ø 250 V	L15-30	78W75-C	29W75MB	-	-	-	-
		3Ø 480 V	L16-30	78W76-C	29W76MB	-	-	-	-
		3ØY 600 V	L17-30	78W77-C	29W77MB	-	-	-	-
3-Pole 3-Wire Non-Grounding	30	125/250 V	Non-NEMA	78W08-C	29W08MB	-	-	-	-
4-Pole 4-Wire Non-Grounding	30	3ØY 120/208 V	Non-NEMA	78W09-C	29W09MB	-	-	-	-
4-Pole 5-Wire Non-Grounding	20	250 V	Non-NEMA	76W10-C	27W10MB	-	-	-	-
	10	600 VAC							
4-Pole 5-Wire Grounding	30	3ØY 120/208 V	L21-30	78W81-C	29W81MB	-	-	-	-
		3ØY 277/480 V	L22-30	78W82-C	29W82MB	-	-	-	-
		3ØY 347/600 V	L23-30	78W83-C	29W83MB	-	-	-	-

² 10 A 600 VAC

Accessory Items

WETGUARD PLUGS & CONNECTORS ARE IP69K RATED WHEN CAPS ARE ATTACHED 	CLOSURE CAPS	CONNECTOR CAPS	PLUG CAPS
	15/20 A Straight Blade and 15 A Locking	50W50	14W
	20 A Locking	50W52	26W
	30 A Locking	50W54	28W

INDIVIDUAL COVERS WITH GASKET & MOUNTING SCREWS	FOR USE WITH SINGLE RECEPTACLES	FOR USE WITH INLETS/OUTLETS	FOR ALL DUPLEX OUTLETS	SINGLE-GANG BLANK PLATE
15/20 A Straight Blade and 15 A Locking	60W03	WTCVS-15	WTCVD	WP459
20 A Locking	60W04	WTCVS-20		
30 A Locking	60W05	WTCVS-30		

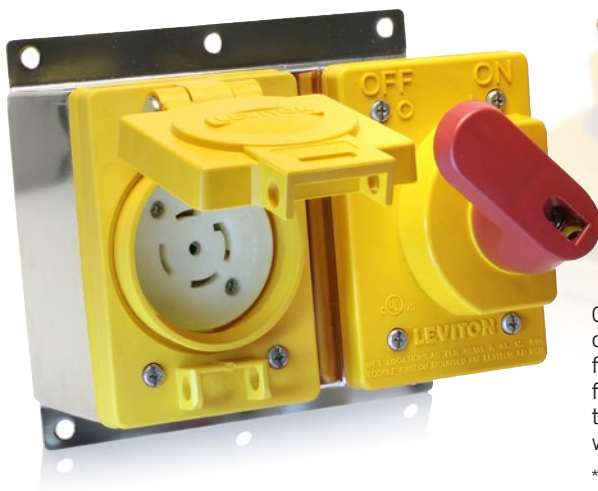
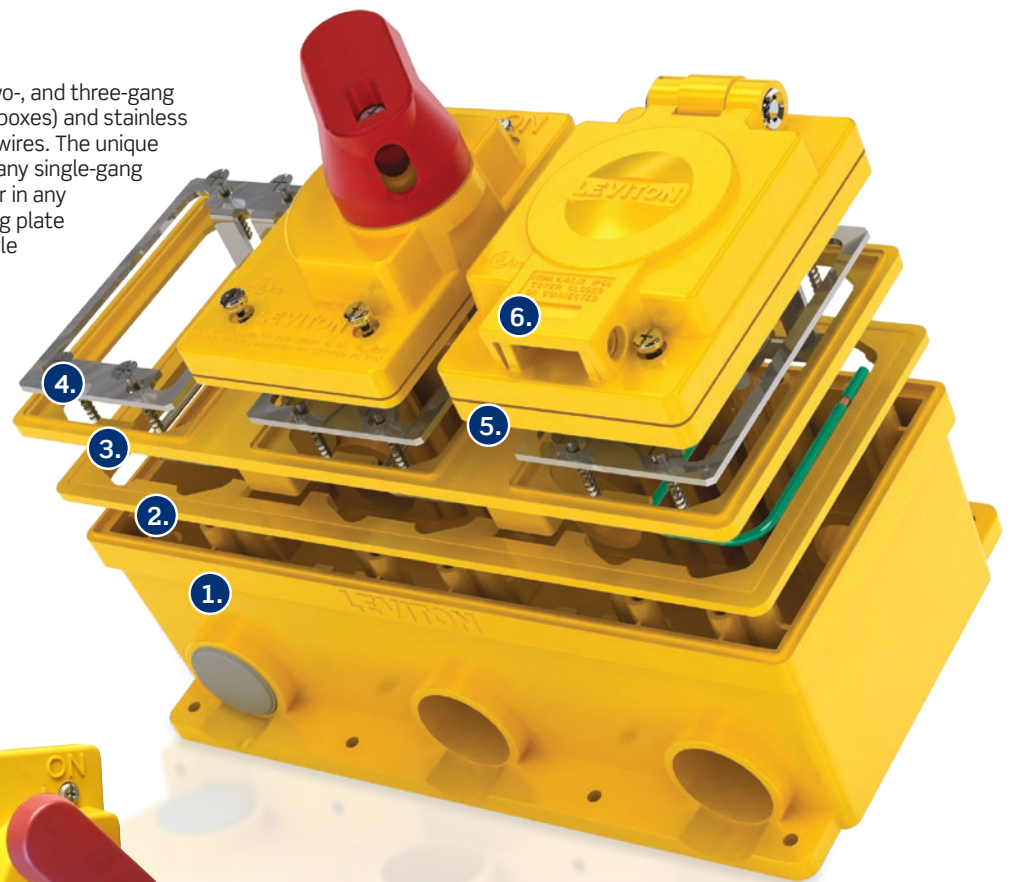
TOGGLE SWITCH COVER	COVER ONLY (RED HANDLE)
For All Single Throw 15 A-40 A Toggle Switches	COVER-S (Yellow) COVER-GS (Gray)

FD Boxes

The non-metallic system comprises one-, two-, and three-gang FD boxes, frame and gasket (for multi-gang boxes) and stainless steel device mounting plate(s) with ground wires. The unique frame design allows for the combination of any single-gang Wetguard inlet, outlet or toggle switch cover in any position. The stainless steel device mounting plate provides for mounting single outlets or toggle switches in addition to providing grounding of the devices.

1. FD Box
2. TPV Gasket
3. Device Frame
4. Device Mounting Plate with ground wire
5. TPV Gasket (device)
6. Device and/or cover

NOTE: FD Boxes are supplied with items 1 through 4 assembled. Wiring devices and covers sold separately.



Our stainless steel boxes are designed specifically for use with Wetguard FS/FD mount devices and covers.* They are available in a rugged 14 gauge type 304 stainless steel for resistance against heat, chemical corrosion and physical abrasion. The ultra-smooth finish strengthens the steel, making it easy to clean and sanitize. Available in one- and two-gang configurations, these boxes provide an IP66 rated watertight connection when used with Wetguard devices.

*Stainless Steel Boxes are compatible with all Wetguard covers EXCEPT duplex receptacle cover.

Additional Solutions for Watertight and Weather Protective Applications



Self-Test GFCI Protected Cord Sets and User-Attachable Devices

Rainproof, outdoor rated, these devices are fully OSHA compliant for use on job sites, and are also perfect for use in a variety of temporary power applications, such as recreation vehicles, marine vehicles, portable pools, portable generators, submersible pumps, vending machines and more.



Powerswitch® Watertight Safety Disconnect Switches with Integrated Receptacles

Integrated receptacle bracket accepts all 20 A and 30 A NEMA Locking Single Receptacles. When used with Wetguard® Receptacles these devices offer IP66 and NEMA 4X protection, ideally suited for washdown and outdoor environments.



Powerswitch® Watertight Safety Disconnect Switches

Watertight and dust-tight, Powerswitch Safety Disconnect Switches are the ideal choice for process environments with particulate laden air, outdoor exposure, or requiring water washdowns. Available in stainless steel and non-metallic 30 A, non-metallic 60 A and 100 A, fused, non-fused, and circuit-breakered versions.



Powerswitch® Manual Motor Controllers, Suitable as Motor Disconnect

Leviton's line of industrial grade AC Manual Motor Controllers provide safe, reliable control of a variety of motor loads in HVAC applications, bottling lines, pumping machines, air compressors and other heavy manufacturing equipment. Available in a variety of enclosures for weatherproof and watertight applications.



IEC 60309 Watertight Pin & Sleeve Devices

North American watertight pin & sleeve plugs, connectors, receptacles, inlets and integrated mechanical interlock safety disconnect switches in 20 A through 100 A configurations. Available in both Standard Series and the higher performing, LEV Series, which feature NSF certification and the most comprehensive performance ratings on the market. The LEV Series is also available with Inform™ technology to improve safety, efficiency and productivity. Learn more at www.leviton.com/inform. International devices also available in 16 A through 125 A splashproof and watertight configurations.



Rhino-Hide® Single-Pole Connectors

Leviton's single-pole plugs, connectors, receptacles and accessories are available in configurations rated up to 1100 Amps. These are ideal for use in a variety of power distribution and temporary power applications, both indoors and out.



Rhino-Hide® NEMA Wiring Devices

Rhino-Hide NEMA wiring devices raise the bar when it comes to industrial grade NEMA configured wiring devices! Boasting the highest watertight ratings of any device in their class – submersible (IP68) and suitable for high pressure/high temperature washdown (IP69K) - and unaffected by high vibration environments.

The most versatile and well-engineered watertight wiring devices on the market.



The Wetguard line consists of a comprehensive array of plugs, connectors, inlets, outlets, covers and stainless steel and non-metallic FD boxes that allows mounting of single-gang devices in multi-gang configurations.

Watertight Electrical Connections

Wetguard devices are designed for industrial applications where electrical connections are exposed to wet locations such as outdoor weather or indoor washdown. They have IEC and NEMA watertight and dust-tight enclosure ratings and offer many significant advantages over competitive brands. A patented multi-point sealing system forms an impenetrable barrier against dirt and moisture providing the ultimate protection that you should expect from a watertight device.

Corrosion-Resistant

Wetguard devices feature corrosion-resistant electroless nickel-coated brass blades, contacts, terminal screws and wiring clamps, and stainless steel assembly screws, making them ideal for use in wet and corrosive environments.

Withstands Abuse in Harsh Environments

Wetguard devices are resistant to water, acids, alkalis, and many automotive and industrial lubricants and solvents. The plug and connector husk is molded to a bondable nylon body, providing a device that withstands physical abuse as well. In addition, the patented compression nut strain relief system ensures the integrity of the electrical connection and watertight seal.

Visit our Website at:

leviton.com/wetguard

email: industrial@leviton.com

Q-662G

060722

Leviton Manufacturing Co., Inc.

201 N Service Rd, Melville, NY 11747

Telephone: 1-800-323-8920 • FAX: 1-800-832-9538

Tech Line: 1-800-824-3005 (M-F 8AM-10PM; Sat 9AM-7PM; Sun 9AM-5PM)

© 2020 Leviton Manufacturing Co., Inc. All rights reserved.

