



EXTREME NETWORKS AND LEVITON Technology in the Data Center

LEVITON[®]

Network Technology
ALLIANCE

E Extreme[®]
networks

Visit:
www.extremenetworks.com

E Extreme[®]
networks

Sales:
1-408 579-2800
1-888 257-3000

Support:
1-800-998-2408
1-408-579-2826

General Inquiry:
info@extremenetworks.com

www.extremenetworks.com

LEVITON[®]

Customer Service:
1-800-722-2082
1-425-486-2222

Support:
1-800-824-3005

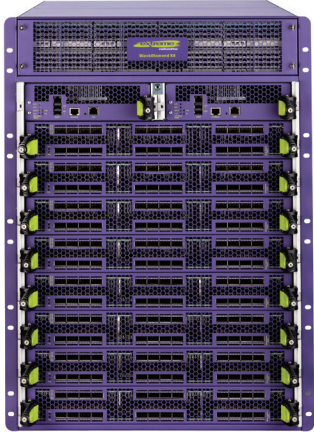
International:
1-425-486-2222

Data Center Team:
dcteam@leviton.com

www.leviton.com

EXTREME SWITCHES

Data centers today demand highly virtualized, converged, and scalable infrastructure. Multi-tenancy and cloud computing are driving the need for simplicity and cost efficiency from the network fabric, along with a need for expandability, high performance, and service uptime. Extreme Networks Open Fabric solution, led by its flagship BlackDiamond® X8 platform, provides seamless any-to-any connectivity through a simple, scalable, and centrally orchestrated network.



BlackDiamond X8

Designed for the cloud-scale requirements of data centers, High Performance Computing (HPC), and Internet Exchange Points (IXP), the BlackDiamond X8 provides a low-latency, high performance switch fabric with high-density wire-speed 10 GbE, 40 GbE, and 100 GbE connectivity for edge-to-core applications, all in a compact footprint using only one-third of a standard rack. As a 'fabric-in-a-box' solution, the BlackDiamond X8 eliminates expensive multi-tier architectures and the challenges of inter-device connectivity, uplink bandwidth, and latency. It also leverages a low-power design ideal for green operations and high degrees of energy efficiency, resulting in lower Total Cost of Ownership (TCO).

The BlackDiamond X8 is designed for enterprise, multi-tenant, and cloud data center core and border deployments. In these applications, the BlackDiamond X8 can be used with XL and non-XL series modules to provide a mix of high- and modest- scale connectivity. The non-XL series modules provide 10 GbE and 40 GbE downlink connectivity for top-of-rack switches such as the Extreme Network Summit X670, while the XL series modules provide a high-scale 10 GbE, 40 GbE, and 100 GbE solution for inter-DC, disaster recovery, or cloud connectivity. A pair of BlackDiamond X8 switches connected through M-LAG provides a robust and scalable core solution.



Summit X670 Series

Summit X670 series switches are purpose-built top-of-rack switches designed to support emerging 10 Gigabit Ethernet-enabled servers in enterprise and cloud data centers. Summit X670 helps optimize new server deployments with its optional, future-proofing 40 GbE uplink for 10 GbE-based high-performance servers to start the transition to the new virtualized environment.

The Summit X670 series is available in two models: Summit X670V and Summit X670. Summit X670V provides high density for 10 Gigabit Ethernet switching in a small 1RU form factor. The switch supports up to 64 ports in one system and 448 ports in a stacked system using high-speed SummitStack-V320, which provides 160 Gbps and 320 Gbps throughput and distributed forwarding. The Summit X670 model provides up to 48 ports in one system and up to 352 ports in a stacked system using SummitStack-V longer distance (up to 40 km with 10GBASE-ER SFP+) stacking technology.

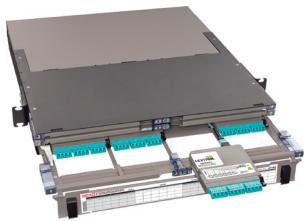
LEVITON DATA CENTER SOLUTIONS

Leviton data center systems are designed for turnkey implementation of the physical layer. With high-end systems that include array cords, trunk cables, patch panels, patch cords, and cassettes, Leviton helps your physical layer infrastructure meet the needs of 10/40/100 GbE requirements.



Opt-X® Unity 40/100G MTP® Fiber System

Update your data center to meet new high-speed applications with the Leviton Opt-X Unity 40/100G Fiber System — a simple connectivity solution that makes it easy to migrate to 40 GbE and 100 GbE speeds. System components include MTP trunk cables, harnesses, array cords, and cassettes. They are available in laser-optimized multimode (OM3/OM4/OM4+) and feature industry-leading 24-fiber MTP connectors. Combine with OM4+ cabling for greater bandwidth and longer reach.



HDX Platform

The HDX platform alleviates the network growing pains faced by many large enterprises and data centers. Compact HDX cassettes and adapter plates help IT managers use existing rack space more efficiently, while creating room for future growth. The cassettes and plates work with high-density UHDX and HDX enclosures, allowing up to 144 LC fibers per rack unit.



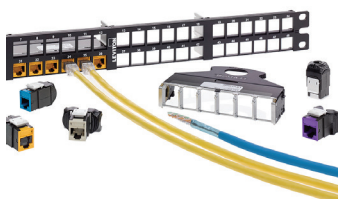
SDX Platform

The SDX platform serves small-to-medium data centers and businesses where network space is less of an issue. It's ideal for maintaining pre-existing infrastructure that requires easy cable management. These cassettes and plates work with both SDX rack-mount and wall-mount enclosures, as well as Leviton's Vertigo enclosures that mount outside of the rack.



e2XHD Patching System

The cassette-based e2XHD Patching System provides a high-density solution for data center applications where fast deployment and simple maintenance are priorities. e2XHD fiber cassettes quickly snap in and pull out of high-density 1RU and 4RU panels, making installation, moves, adds, and changes easier than ever. The e2XHD cassettes work seamlessly with Opt-X Unity trunks, harnesses, and array cords to deliver 10 GbE, 40 GbE, and 100 GbE speeds.



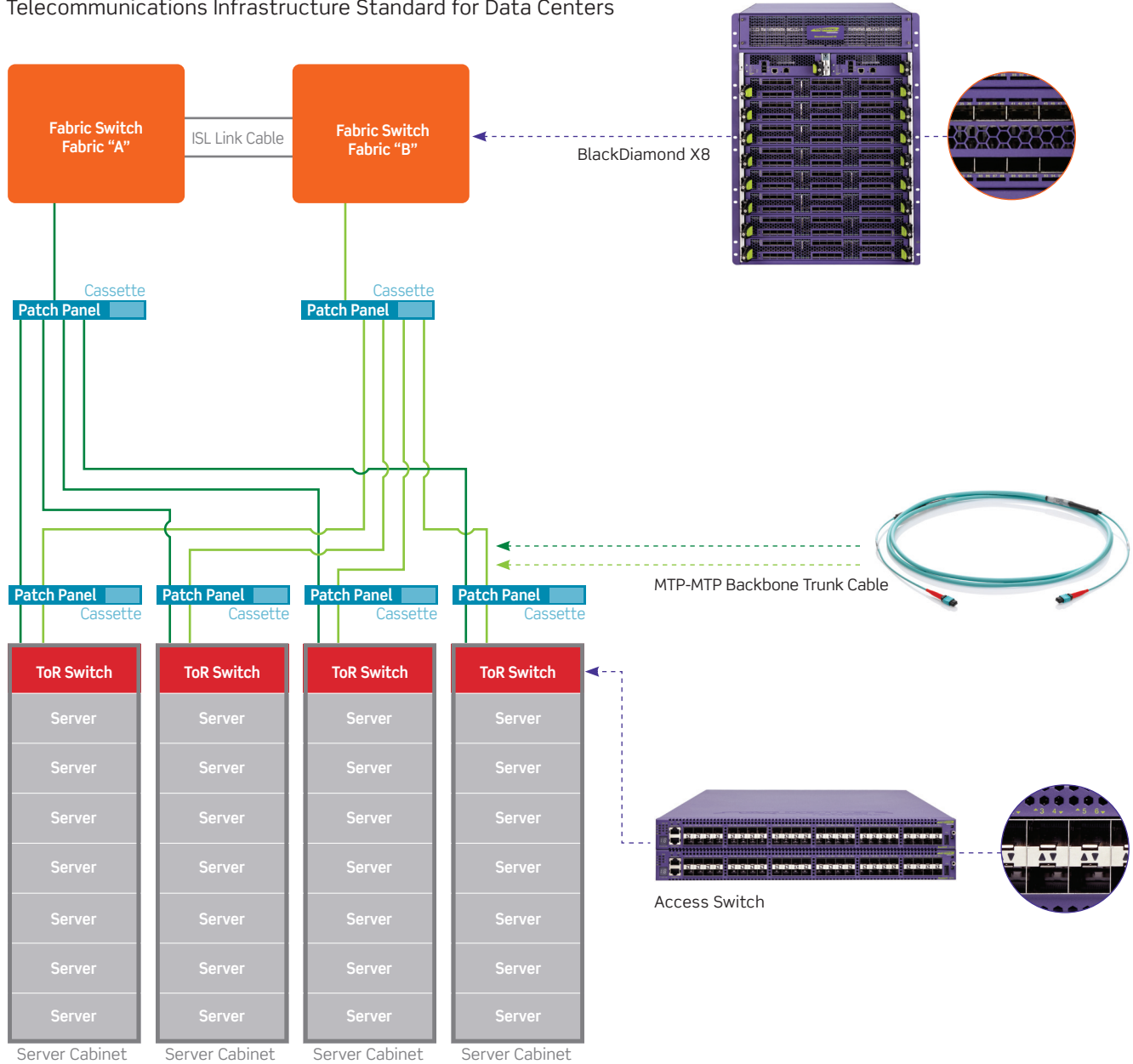
Atlas-X1™ Cat 6A System

This Cat 6A component-rated system delivers the highest level of verified performance for today's high-bandwidth applications. The system's connectors, patch panels, and patch cords have each been independently tested and verified by Intertek (ETL) to meet or exceed ANSI/TIA-568-C.2 component performance. When combined with approved horizontal cable, this ensures greater permanent link and channel margins to support 10GBASE-T networks up to 500 MHz.

EXTREME AND LEVITON: CONNECTIONS

Basic Topology as defined by ANSI/TIA-942-A

Telecommunications Infrastructure Standard for Data Centers



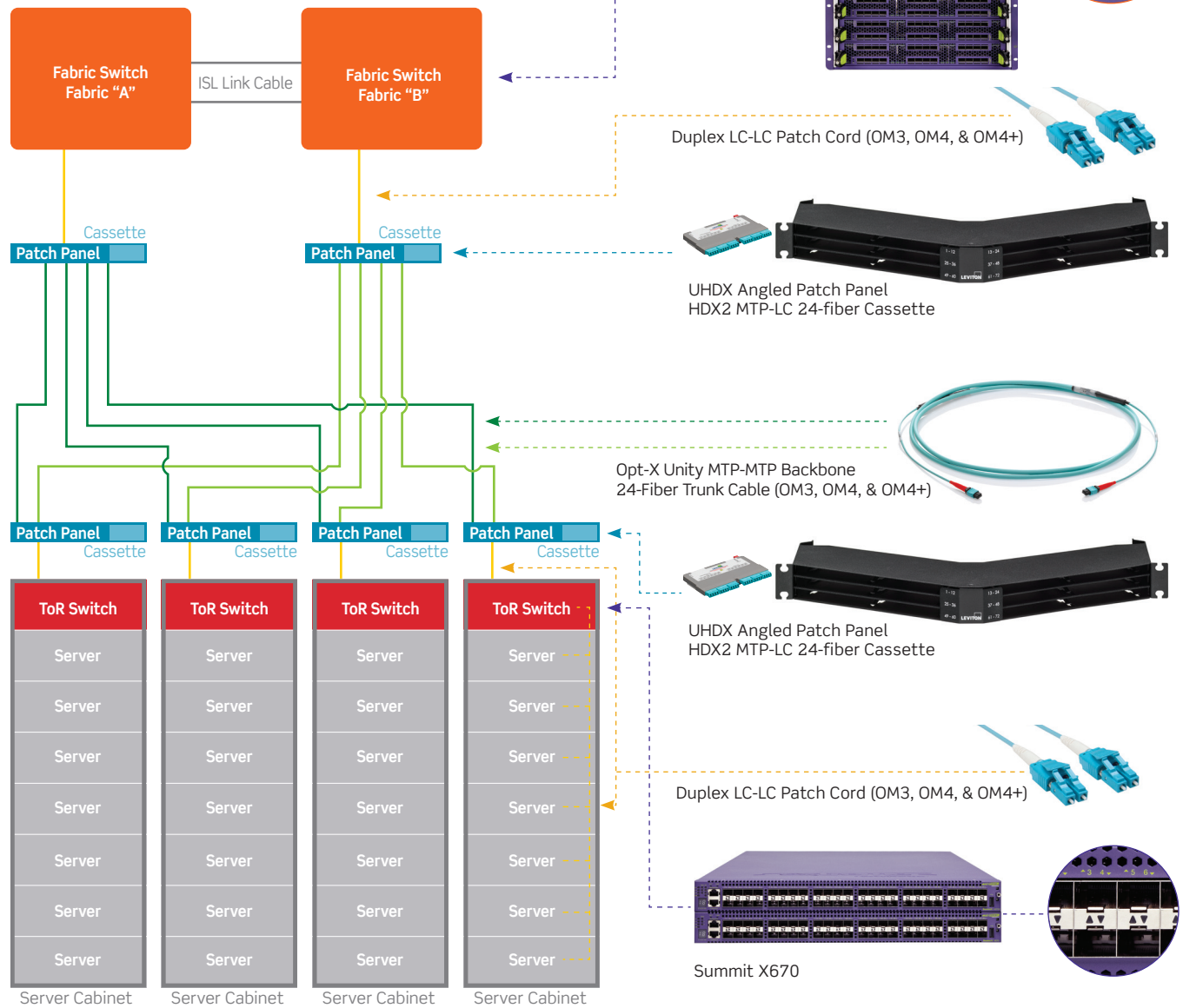
Migration from 10 GbE to 40 GbE and 100 GbE

The following pages show 10, 40, and 100 GbE network topologies, using Extreme switches and Leviton connectivity. Each application includes the same 24-fiber MTP backbone trunk cables and patch panels.

10 GBE APPLICATION

Suggested 10 GbE Solution Building Blocks:

- Opt-X® Unity 40/100G Pre-Terminated MTP Trunks
- UHDX Ultra High-Density Angled Patch Panels
- HDX MTP®-LC Cassettes
- LC Duplex Patch Cords (OM3 & OM4)

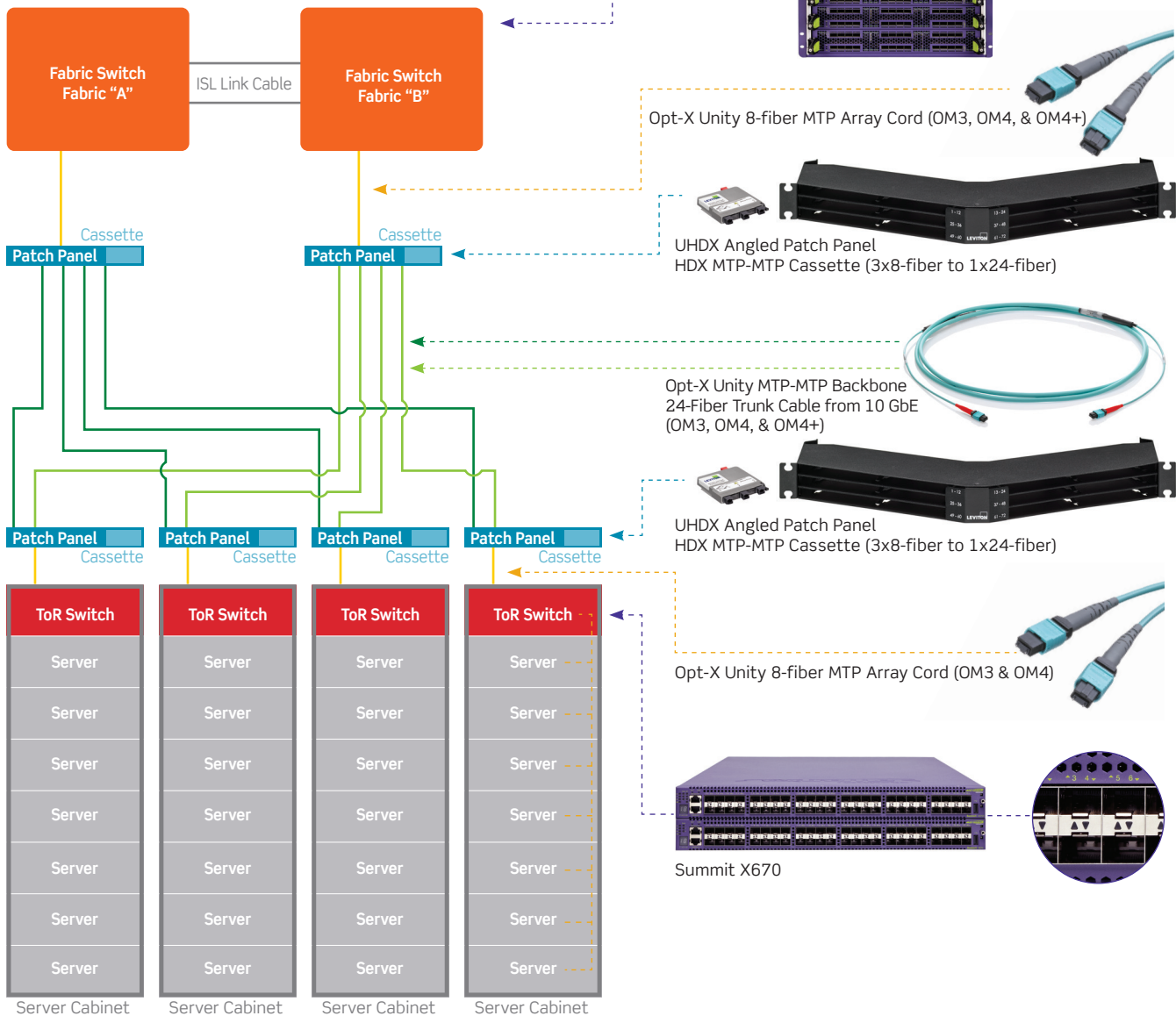


40 GBE (SR4) APPLICATION

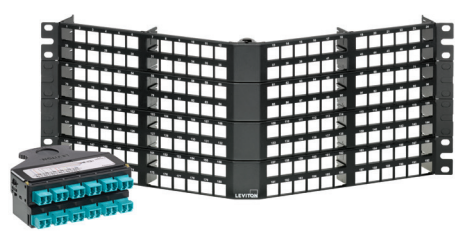
Migration from 10 GbE to 40 GbE

Required component change to enable 40 GbE Solution:

- HDX MTP®-MTP (3x8-fiber to 1x24 fiber) Cassettes
- Opt-X® Unity 8-fiber MTP Array Cords



SPOTLIGHT e2XHD Enclosures



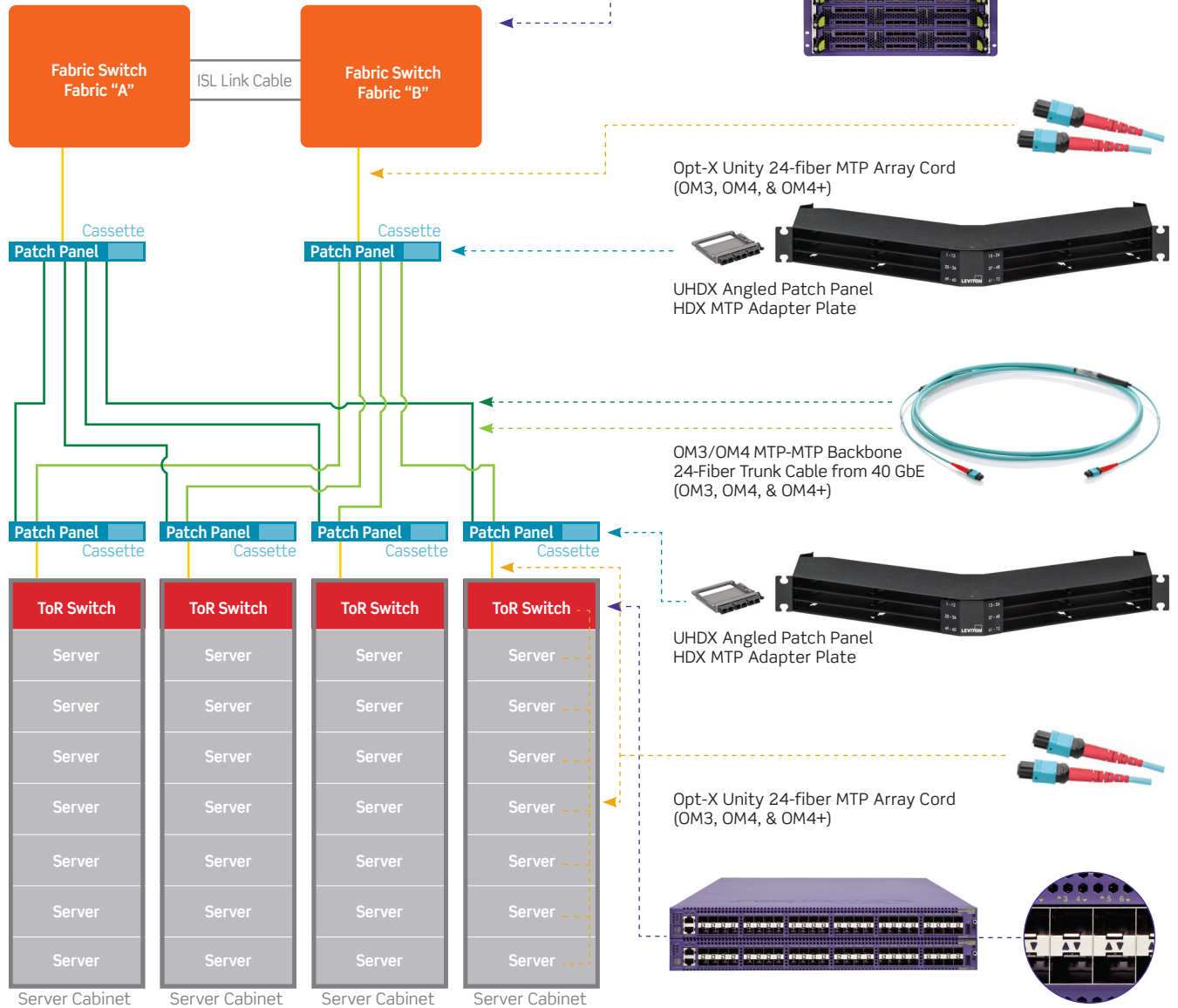
As an alternative to UHDX panels and cassettes, e2XHD Enclosures also accept high-density MTP cassettes, and are available in 1RU and 4RU sizes.

100 GBE (SR10) APPLICATION

Migration from 40 GbE to 100 GbE

Required Leviton component changes to enable 100 GbE Solution:

- HDX MTP® Adapter Plates
- Opt-X® Unity 24-fiber MTP Array Cords



SPOTLIGHT HDX MTP Adapter Plates



HDX MTP Adapter Plates include four adapters, available in key-up/key-down or key-up/key-up configurations.

THE SMART CHOICE FOR A BETTER NETWORK

High-performance connectivity backed by
the industry's best service and support

We invent the industry's best technologies. We build them to last. And we stand behind every product and every installation – delivering industry-leading performance and unbeatable service and support – throughout the life of your structured cabling system. Add in the peace of mind that comes from working with a stable, century-old supplier, and you get far and away the highest return on infrastructure investment.

Leviton Network Solutions Division Headquarters

leviton.com/networksolutions

2222-222nd Street S.E., Bothell, WA 98021 USA

Inside Sales

T 800.722.2082

E insidesales@leviton.com

Technical Support

T 800.824.3005 / +1.425.486.2222

E appeng@leviton.com

International Inside Sales

T +1.425.486.2222

E intl@leviton.com

Leviton Network Solutions European Headquarters

brand-rex.com

Viewfield Industrial Estate, Glenrothes, Fife KY6 2RS, UK

Customer Service

T +44.0.1592.772124

E customerservice@brand-rex.com

Leviton Corporate Headquarters

leviton.com

201 N. Service Road, Melville, NY 11747 USA

Customer Service

T 800.323.8920 / +1.631.812.6000

E customerservice@leviton.com

Leviton International Offices

Asia / Pacific

T +1.631.812.6228

E infoasean@leviton.com

India / SAARC

T +971.4.886.4722

E infoindia@leviton.com

Canada

T +1.514.954.1840

E pcservice@leviton.com

Latin America

T +52.55.5082.1040

E lsamarketing@leviton.com

Caribbean

T +1.954.593.1896

E infocaribbean@leviton.com

Mexico

T +52.55.5082.1040

E lsamarketing@leviton.com

China

T +852.2774.9876

E infochina@leviton.com

Middle East & Africa

T +971.4.886.4722

E lmeinfo@leviton.com

Colombia

T +57.1.743.6045

E infocolombia@leviton.com

South Korea

T +82.2.3273.9963

E infokorea@leviton.com

All Other International Inquiries

E international@leviton.com

