

SYSTEM DATA SHEET

CX6100 | CAT 6 ENHANCED UTP SYSTEM

Cat 6 system featuring LANmark™-1000 cable and component-rated connectivity

- Exceeds ANSI/TIA-568.2-D Cat 6 and ISO/IEC 11801-1 Class E requirements for channel, link, and component performance to support IEEE 1000BASE-T networks
- Limited lifetime warranty available when projects are installed by Leviton or Berk-Tek certified contractors
- Error-free performance up to 1 Gigabit Ethernet with full duplex transmission
- Provides additional performance margin to reliably support Gigabit Ethernet in high-noise environments
- Third-party verified by Intertek Testing Services (ETL)
- Provides bandwidth required for multimedia, broadband video, analog video, and other future applications
- Guaranteed cable balance improves overall performance and reduces emissions which results in reduced transmission errors

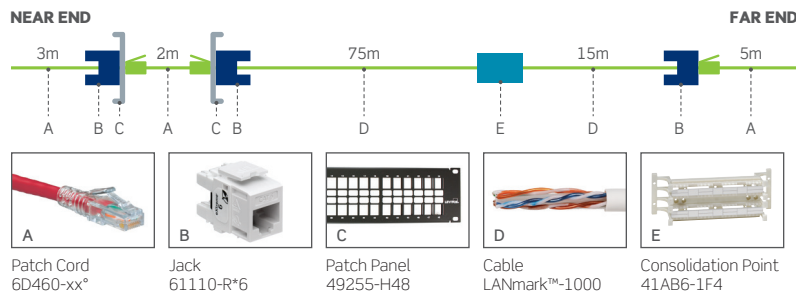
GUARANTEED* SYSTEM PERFORMANCE

CX6100 CAT 6 ENHANCED UTP SYSTEM CHANNEL MARGIN GUARANTEES*							
Insertion Loss	NEXT	PSNEXT	ACR-F (ELFEXT)	PSACR-F (PSELFEXT)	Return Loss	ACR-N	PSACR-N
5%	6 dB	6 dB	8 dB	9 dB	3 dB	7 dB	8 dB

*Values represent guaranteed margins to ANSI/TIA-568.2-D standard at 20°C ambient temperature. All parameters comply with ANSI/TIA-568.2-D Cat 6 and ISO/IEC 11801-1 Class E requirements across the entire frequency range. All values represent worst-case margins for 9- to 100-meter channel configurations. System performance margin guarantees are representative of the specific components and topologies as listed on the CX6100 solution data sheet and third-party test report. Contact your Berk-Tek Leviton Technologies technical representative for more information on alternative components and channel configurations. Details at Leviton.com.

Guaranteed System Performance applies exclusively when the system is installed and tested by Leviton Network Solutions Certified Contractors, or Berk-Tek Certified OASIS Integrators. Guaranteed margin values apply at the time of installation.

SYSTEM TEST REPORT TOPOLOGY



RECOMMENDED FOR

Applications requiring optimal support for 1000BASE-T Ethernet with headroom

Network applications in data center, financial, health care, government, transportation, and education environments

Networks with high bandwidth utilization requirements

PoE standards: IEEE 802.3af, 802.3at, 802.3bt, Cisco UPoE, and Power over HDBase™ (PoH) up to 100 watts

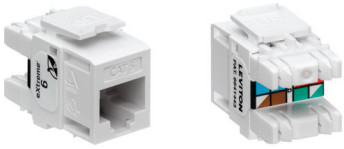
Any IP-based system requiring UTP cabling

Analog security applications using UTP cable

AV systems for high-end conference rooms and classrooms

6

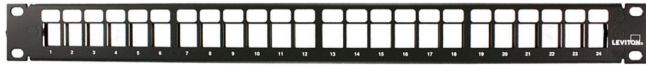
CAT ENHANCED



LEVITON JACKS

EXTREME® CAT 6 COMPONENT-RATED QUICKPORT® JACKS

- Exceed requirements for Category 6 described in ANSI/TIA-568.2-D and Class E requirements described in ISO/IEC 11801-1
- Patented Retention Force Technology™ protects against time damage and maintains contact force between plug and jack, preventing arcing from intermittent disconnects in PoE applications
- Circuit board technology for exceptional high-frequency operation
- Gas-tight insulation displacement contacts provide excellent conductor retention and resistance to surface-contact oxidation for life of the system
- Pair Separation Tower design facilitates separation of conductors and minimizes untwisting
- Patented dual-layer wiring label simplifies punchdown and reduces rework
- 90 or 180 degree bi-directional entry eases cable bend radius in back boxes
- Supports Power over Ethernet (PoE) —see individual product specifications sheets for full capabilities
- Proudly manufactured in the U.S.



LEVITON PATCH PANELS

CAT 6 110-STYLE AND QUICKPORT PATCH PANELS

- Exceed requirements for Category 6 described in ANSI/TIA-568.2-D and Class E requirements described in ISO/IEC 11801-1
- 110-Style available in flat and angled configurations
- QuickPort available in flat, angled, recessed, recessed angled, and Zero-U configurations
- Gas-tight insulation displacement contacts provide excellent conductor retention and resistance to surface-contact oxidation for life of the system
- 110-Style patch panels include color codes for T568A/B wiring schemes
- Magnifying lens on select models ensures visibility of port labels



LEVITON PATCH CORDS

EXTREME CAT 6 SLIMLINE BOOT PATCH CORDS

- Tested and verified for TIA Category 6 component requirements
- 24-gauge stranded for maximum flexibility
- Nominal outer diameter of .22" to reduce cable pathways in racks and cabinets
- SlimLine boot supports high-density patching and extraction with extended-reach latch release
- Made-to-order custom lengths are quickly available for top-of-rack, end-of-row, or general network patching



BERK-TEK CABLE

LANMARK™ - 1000 ENHANCED CAT 6 CABLE

- Optimal support for Gigabit Ethernet with headroom
- Provides additional bandwidth for future applications
- ETL verified to exceed ANSI/TIA-568.2-D Category 6 standard
- Independently verified headroom guarantees ensure consistent performance
- 1,500 ft. *smartPAK* packaging option reduces waste and increases installation efficiency
- Power sum characterization gives highest performance using existing applications
- Characterized to 550 MHz, 300 MHz greater than the standard
- Outer diameter 0.230" (5.8mm), CMP
- UL/ETL Listed
- 23 gauge
- Proudly manufactured in the U.S.

PART NUMBERS - Common part numbers shown. Many additional colors, lengths, and other options available online.

LEVITON JACKS

eXtreme Cat 6 Component-Rated QuickPort Jack 61110-R*6

LEVITON PATCH PANELS

	1RU 24-PORT	1RU 48-PORT	2RU 48-PORT	2RU 72-PORT
Cat 6 Flat 110-Style Patch Panel	69586-U24		69586-U48	
Cat 6 Angled 110-Style Patch Panel	69587-U24		69587-U48	
Flat QuickPort Patch Panel+	49255-H24	49255-Q48	49255-H48	49255-D72
Angled QuickPort Patch Panel+	49256-H24	49256-D48	49256-H48	49256-D72

LEVITON 110-STYLE WALL-MOUNT WIRING BLOCK KIT

Cat 6 110-Style Wiring Block Kit, includes 96-pair block with legs, labels, and 24 C-4 clips[^] 96-PAIR 41AB6-1F4

LEVITON PATCH CORDS

eXtreme Cat 6 SlimLine Boot UTP Patch Cord 6D460-xx*

BERK-TEK CABLE

	PLENUM 1500' SMARTPAK	PLENUM 1000' TEKPAK	RISER 1500' SMARTPAK	RISER 1000' TEKPAK
LANmark-1000 Enhanced Cat 6 Cable, Blue	11074694	10032094	11074701	10032455
LANmark-1000 Enhanced Cat 6 Cable, White	11074738	10032092	11074740	10032459
LANmark-1000 Enhanced Cat 6 Cable, Gray	11074739	10032026	11074741	10032452

* = Color: White (W), Lt. Almond (T), Ivory (I), Yellow (Y), Orange (O), Crimson (C), Dark Red (R), Purple (P), Blue (L), Green (V), Gray (G), Black (E), Brown (B)

+ = Sold empty, load with 61110 jacks

xx = Length: 1 (01), 3 (03), 5 (05), 7 (07), 10 (10), 15 (15), 20 (20) feet

[^] = For consolidation point. Legs are non-removable and not sold separately

* = Color: White (W), Yellow (Y), Blue (L), Black (E), Red (R), Green (G), Gray (S)