

SYSTEM DATA SHEET — INTERNATIONAL

ATLAS-X1™ CAT 6A SHIELDED SYSTEM

Ideal for applications that require the most advanced Cat 6A performance with added signal isolation

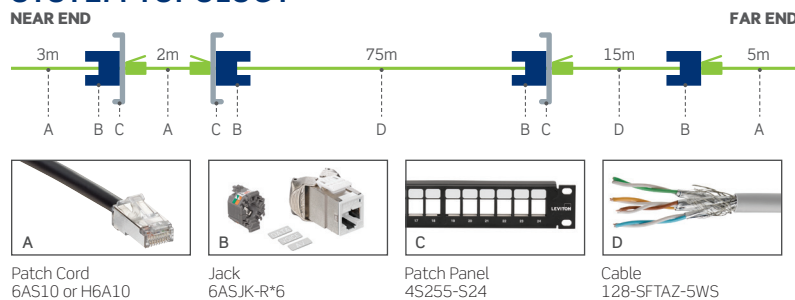
- Exceeds ISO/IEC 11801-1 Class E_A and ANSI/TIA-568.2-D Cat 6A requirements for channel, link, and component requirements to support IEEE 10GBASE-T (802.3an) networks
- Third-party tested and verified
- Ensures excellent alien crosstalk (AXT) and EMI/RFI immunity
- Error-free performance up to 10 Gigabit Ethernet with full duplex transmission
- Backwards compatible with Gigabit Ethernet to provide seamless migration path to 10GBASE-T and supports all Cat 6 and Cat 5e system requirements

TYPICAL* SYSTEM PERFORMANCE

ATLAS-X1 CAT 6A SHIELDED SYSTEM CHANNEL MARGINS*										
	Insertion Loss	NEXT	PSNEXT	ACR-F (ELFEXT)	PSACR-F (PSELFEXT)	Return Loss	ACR-N	PSACR-N	PSANEXT	PSAACR-F
Standard (500MHz)	4.5%	8.0 dB	7.0 dB	8.5 dB	9.0 dB	7.0 dB	8.0 dB	9.0 dB	17.0 dB	17.0 dB
Typical Performance Margin	4.5%	8.0 dB	7.0 dB	8.5 dB	9.0 dB	7.0 dB	8.0 dB	9.0 dB	17.0 dB	17.0 dB

*All parameters comply with ANSI/TIA-568.2-D Cat 6A and ISO/IEC 11801-1 Class E_A requirements across the entire frequency range. All values represent typical margins for 19- to 100-meter channel configurations. System performance is representative of the specific components and topologies as listed on this system data sheet. Typical margins listed reflect channels of 21-93 meters when using 23 AWG patch cords (H6A10). Typical performance values are based on verified test results, either third-party, in-house and/or field test data. Field-installed channel margins may vary based on the accuracy of the handheld tester, system design and installation practices. Only Leviton approved testers may be used. All stated performance specifications are subject to the terms and conditions of the manufacturers warranties. Details at www.leviton.com.

SYSTEM TOPOLOGY



RECOMMENDED FOR

10GBASE-T network applications and mission-critical systems

Data center channel configurations from 9 to 100 meters

Data center applications including computer clusters and end-of-row architectures

Optimal total cost of ownership for financial, health care, government, transportation, and education environments

Network applications where EMI/RFI may be present and data security is critical

Networks with high bandwidth utilization requirements

Exceeds PoE standards up to 100 watts

AV systems for high-end conference rooms and classrooms

Wireless applications supporting IEEE 802.11ac and higher

Cat
6A
Atlas-X1
Shielded



JACKS

ATLAS-X1™ CAT 6A SHIELDED QUICKPORT™ JACKS

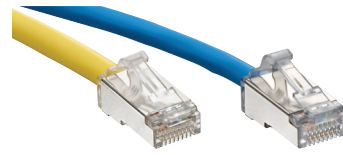
- Independently tested and guaranteed to exceed all component, permanent link, and channel performance requirements
- Patented Retention Force Technology™ protects against time damage and maintains contact force between plug and jack, preventing arcing from intermittent disconnects in PoE applications
- PoE optimized tine geometry prevents arcing damage where plug and jack make contact, extending the life of the jack and ensuring maximum performance (see specification sheets for full PoE capabilities)
- Solid metal body dissipates 53% more heat than plastic, minimizing damage from excess heat in PoE applications
- Available with internal shutter to protect from dust and debris
- Unique tool-free design requires no specialized termination or re-termination tool
- Short jack design supports a wider range of applications (e.g. shallow boxes, enclosures, bend radius, etc.)
- Tested and approved for use in air-handling spaces (plenum rating) in accordance with UL Standard 2043
- Interchangeable icons in 13 colors (VOICE, DATA, AV, and blank) make it easy to identify and track data, voice, or other functions (select jacks include color matching icons)
- Proudly manufactured in the U.S.



PATCH PANELS

ATLAS-X1 SHIELDED QUICKPORT AND E2XHD PATCH PANELS

- Available in QuickPort and cassette-style in flat and angled configurations
- QuickPort patch panels are available in 1RU 24-port as well as 1RU 48-port high density configurations
- Shielding protects against Electromagnetic Interference (EMI) and Radio Frequency Interference (RFI), and provides excellent alien crosstalk (AXT) suppression



PATCH CORDS

CAT 6A PATCH CORDS

- Tested and verified for TIA Cat 6A component and channel requirements
- Short boot to reduce installed bend radius requirements
- Excellent alien crosstalk (AXT) suppression
- 26-gauge stranded for maximum flexibility in any density patching environment
- Available from stock in lengths of 3' (0.9 m), 5' (1.5 m), 7' (2.1 m), 10' (3.1 m), 15' (4.6 m), 20' (6.1 m) and in 7 colors
- Country of Origin: U.S.

CAT 6A HIGH-FLEX PATCH CORDS

- Tested and verified for TIA Cat 6A component and channel requirements
- Nominal OD of 4.7 mm to maximize cable pathway capacity
- Enhanced flexibility and short boot to minimize bend radius requirements
- 28 AWG patch cords have limitations in terms of supported channel lengths and PoE levels. Please see [product spec sheet](#) for details of these limitations.



CABLES

CAT 6A SHIELDED CABLES

- Mylar® tape and aluminum shield provide a high level of security for sensitive networks
- Lower bit errors, resulting in increased network performance
- Independently tested and verified to meet ANSI/TIA-568.2-D Cat 6A and ISO 11801-1 Class E_A performance
- Available in IEC 60332-1 and IEC 60332-3 (LSHF/LSZH) flame ratings

PART NUMBERS - Common part numbers shown. Many additional colors, lengths, and other options available online.

JACKS	STANDARD	WITH SHUTTER	ADDITIONAL ICONS
Atlas-X1 Cat 6A Shielded QuickPort Jack	6ASJK-R*6	6ASJK-S*6	ICONS-IC*
LEVITON E2XHD CASSETTES			
e2XHD Empty Cassette+			E2XHD-BRK
PATCH PANELS			
e2XHD High-Density Flat Patch Panel [~]	1RU, 24-PORT	1RU, 48-PORT	2RU, 48-PORT
e2XHD High-Density Angled Patch Panel [~]		E2X1F-S48	
Atlas-X1 Flat Shielded QuickPort Patch Panel+		E2X1A-S48	
Atlas-X1 Flat Shielded QuickPort Patch Panel+	4S255-S24	4S255-D48	4S255-S48
Atlas-X1 Angled Shielded QuickPort Patch Panel+	4S256-S24		4S256-S48
PATCH CORDS			
Cat 6A Patch Cord, SlimLine boot		LATIN AMERICA	ASIA PACIFIC
Cat 6A High-Flex 28 AWG Patch Cord		6AS10-xx°	6AS10-xx°
		H6A10-##‡	H6A10-##‡
CABLES			
Atlas-X1 Cat 6A F/UTP Cable, LSHF/LSZH, blue [¥]		LATIN AMERICA	ASIA PACIFIC
Cat 6A U/FTP Cable, LSHF/LSZH, white [¥]		100-FTPAZ-MLS	100-FTPAZ-MLS
Cat 6A S/FTP Cable, LSHF/LSZH, white [¥]		128-UFPAZ-5WS	128-UFPAZ-5WS
		128-SFTAZ-5WS	128-SFTAZ-5WS

* = Jack Color: White (W), Lt. Almond (T), Ivory (I), Yellow (Y), Orange (O), Crimson (C), Dark Red (R), Purple (P), Blue (L), Green (V), Gray (G), Black (E), Brown (B)

[~] = Sold empty, load with E2XHD-BRK cassette

+ = Sold empty, load with 6ASJK jacks

° = Color: White (W), Yellow (Y), Blue (L), Black (E), Red (R), Green (G), Gray (S), Orange (O), Violet (V)

‡ = Color: White (W), Yellow (Y), Red (R), Blue (L), Green (G), Gray (S), Black (E)

xx = Length: 3 (03), 5 (05), 7 (07), 10 (10), 15 (15), 20 (20) feet

= Length in Feet: 1-50 (0.3-6.1 meters)

¥ = Sold in 305- or 500-meter spools and additional colors visit [Leviton.com/cable](#) for details

Mylar® is a registered trademark of DuPont Teijin Films.